

Bega Valley Shire Community Environment Grants Program

Year 6: 2016-17

2016-17 was the sixth year of Bega Valley Shire Council's Community Environment Grants Program. eleven projects were funded with the aim to encourage and assist community involvement in the management of the Shire's environment for the benefit of the whole region. More specifically, the Program addressed the need to:

- Support community groups and organisations to enhance, protect and restore the natural environmental assets of the Shire.
- Increase community awareness and understanding of the Shire's environmental assets.
- Support conservation strategies currently undertaken by Council.
- Assist in the provision of innovative environmental management projects.
- Council funds the Program through Bega Valley Shire Council's Environment Levy.

Bemboka Landcare Group Inc. - Bemboka River Reserve Infrastructure Project - Steps to information sign and viewing deck, Bemboka

\$3310

The Group successfully erected a set of recycled hardwood steps leading up from Colombo Creek to the information shelter. This will ensure the river bank remains intact, preventing erosion whilst providing a more accessible path into the reserve.



Bemboka Landcare Group Inc. -Weed eradication and revegetation on Colombo Creek bank, Bemboka

\$2690

The group successfully coordinated and undertook the following: Woody weed control including: Japanese honeysuckle, blackberry, hawthorn, plum, privet and in-stream willow suckers were treated by the cut/paint method using residual herbicides. Knock-down herbicides were applied to African lovegrass and cocksfoot. The revegetation site was planted out with a mixture of canopy trees, shrubs and grasses, sedges and lillies,



indigenous to the locality. This work goes towards ensuring the high conservation value vegetation is maintained in great condition.

Dry River Landcare Group Inc – Reclaim Our Riverbank Stage 3 - weed control on Dry River Reserve, Quaama

\$ 2170

Dry River Landcare continue to undertake much needed works in a challenging environment. 10 volunteer working bees have been undertaken with 12 people involved at different times. 208 hours of volunteer effort, 230 seedlings planted and maintained.



Hand removal of dead willows to allow public access to the river and improve amenity. Mowing and brushcutting of the walking track to keep good access. Contractors have undertaken stem injection and foliar herbicide applications of the willows in the river. Foliar applications to Japanese honeysuckle, Blackberries, Privet seedlings and the mowing of Periwinkle.

There have been 6 articles in 'The Triangle' updating the community of the projects direction and achievements.

Far South Coast Landcare Association- Sustainable Schools Landcare Education Program, Tathra, Bemboka, Eden \$ 6000



The project successfully educated and initiated school students in the propagation of environmentally significant native plant species and expanded sustainability programs within three local schools. Some of the highlights included;

- FSCLA Seedbank Officer delivered half
-

day workshops at each of the three schools which were greatly received and engaged students.

- Costa Georgiadis (ABC Gardening Aust) toured 6 schools (August 2nd - 5th). Whilst touring the three Eco-Verge schools he initiated the planting stage of each Eco-Verge. Costa also profiled the Eco-Verge initiative at each of the six schools' assemblies and highlighted the project at the REAP Panel presentation.
- Approximately 2000 propagates initiated and currently being nursed in each school's garden. 20% of which expected to be utilized onsite (80% of the propagated will be donated to: CMA and FSCLA projects, 4 x non-participant schools and From Little Things Parklands community garden project
- SE ABC Feature Profiling of project in conjunction with Student Gardeners Convergence coverage



On Track - Old Bega Racecourse Management Committee - Bega River - Anabranch Wildlife Corridor, Bega

\$5971

The wildlife corridor has been successfully planted and the plants established and maintained. The project was a great partnership between the On Track Committee, BRAWL and LLS. Mumbulla School and Green Army also assisted with planting and weeding. The track continues to be a great asset to the community linking the community to the Bega River and now with the added benefit of a developing wildlife corridor.

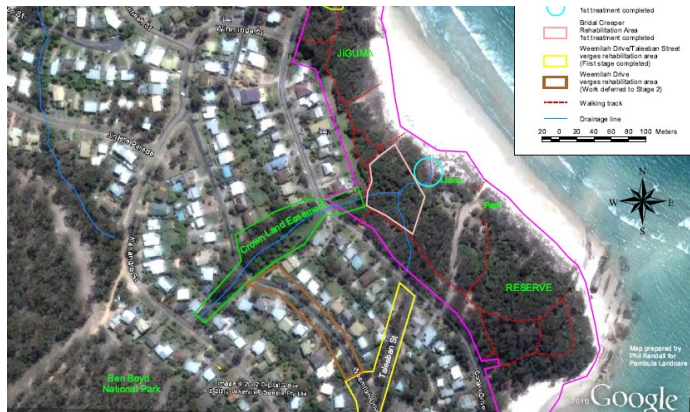


Krista Austin and Lucy Baggett from Mumbulla School's Class 4 help out with planting at the Old Bega

Pambula Landcare - Conservation of significant environmental assets within Pambula Beach

\$6000

The group successfully targeted and controlled high priority weeds infesting the road corridor, crown reserve and Jiguma Reserve. In the road corridor there has been a dramatic reduction in weeds setting a great example of what can be achieved with the appropriate methods. The roadside weed corridor work resulted in positive feedback from residents that public land was being looked after. A number of residents took it upon themselves to remove some of the environmental weeds within their own properties.



Pambula Wetlands and Heritage Project Inc. - Panboola's diverse birdlife interpretive signage, Pambula

\$5500

Two signs have been successfully installed at the Old Pambula Racecourse. The signs measure 1220mm x 610mm each and have been positioned such that the viewer can look over the signs, to the landscape beyond. The signs assist with identification of ten different bird species, one marsupial and two amphibian species and highlight interesting facts about each.



Example of one of the signs



Green army

Salty Lagoon Nature Reserve Action Group - Salty Lagoon Nature Reserve Weed Eradication / Control Project Stage Two, Bermagui

\$5500

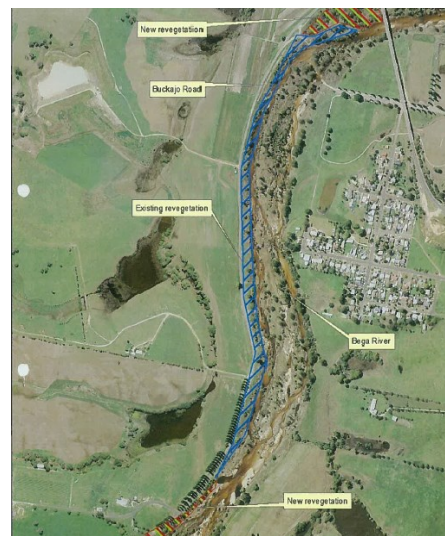
Salty Lagoon Nature Reserve Action Group successfully coordinated targeted weed control focusing on asparagus fern species within the Salty Lagoon Reserve. Small scale experimental burns were also trialled as a means of controlling asparagus with effective follow-up of re-sprouting plants, results so far have been encouraging.



Springvale Landcare Group - Bega River revegetation and stabilisation project, stage 6

\$6000

This project extends Springvale Landcare's rehabilitation of the Bega River road/river reserve on Bega's urban fringe both towards the Bega bridge and upstream towards Buckajo, focusing on revegetation and removal of noxious weeds. The works continue to enhance improve this significant wildlife corridor within Bega.



Tathra Landcare - Tathra Foreshore Weed Control Program

\$6000

Weed mapping extended up the Bega River estuary, including the islands that provides ground-truthed mapping for this project, Tathra Landcare volunteers, BVSC weeds staff and the Coastal Weeds project. Weeds targeted for mapping include Asparagus fern, Bitou bush, Prickly pear, African lovegrass and Mother of millions. This mapping process has improved the understanding of weed distribution, along with improving the mapping and weed identification skills of the Bega Local Aboriginal Land Council (Bega LALC) workers. The project worked from the estuary to the west of Thompson's Road, the Tathra Flora and Fauna Reserve, the estuary around Mogareeka, and south along the dunes to the caravan park. Along with the 8 days of paid bush regeneration work undertaken by Bega LALC, the Tathra Landcare Group undertook their regular monthly working bees focused on Bitou bush. The volunteer effect equated to 297 hours of bush regeneration works.



Hand removal of Bitou bush

To keep up to date with Council's Community Environment Grant Program visit Council's website.