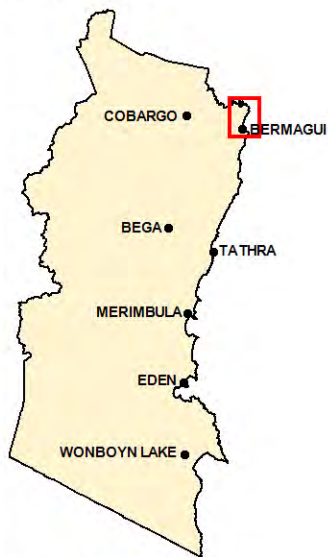




**Annex G Wave Runup Hazard Maps**

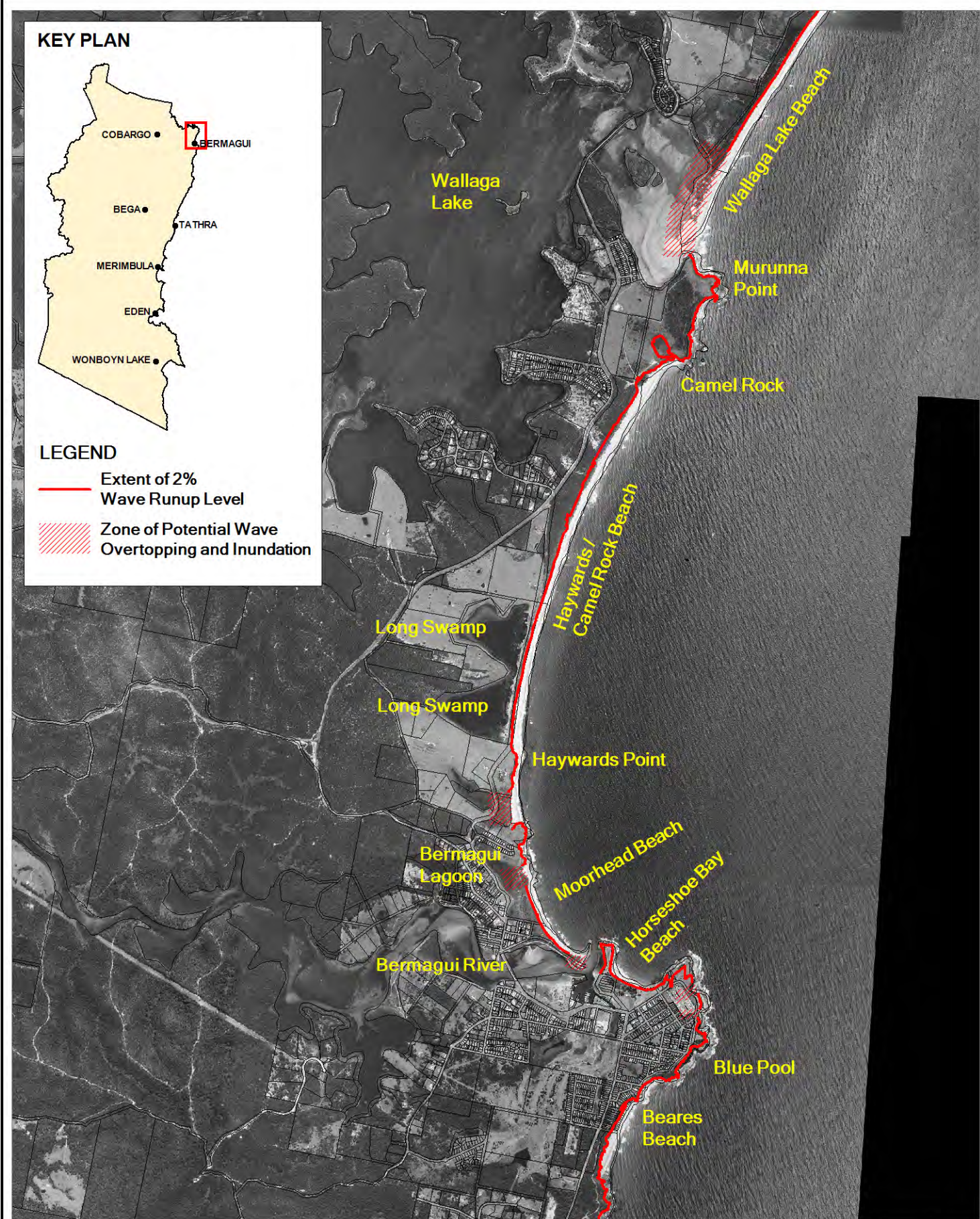
# **Annex G Wave Runup Hazard Maps**

**KEY PLAN**



**LEGEND**

-  Extent of 2% Wave Runup Level
-  Zone of Potential Wave Overtopping and Inundation

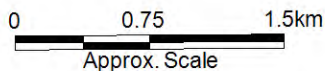


Title:  
**Wave Runup Hazard Mapping  
Bermagui Coast**

Figure:  
**G-1**

Rev:  
**A**



BMT WBM endeavours to ensure that the information provided in this map is correct at the time of publication. BMT WBM does not warrant, guarantee or make representations regarding the currency and accuracy of information contained in this map.

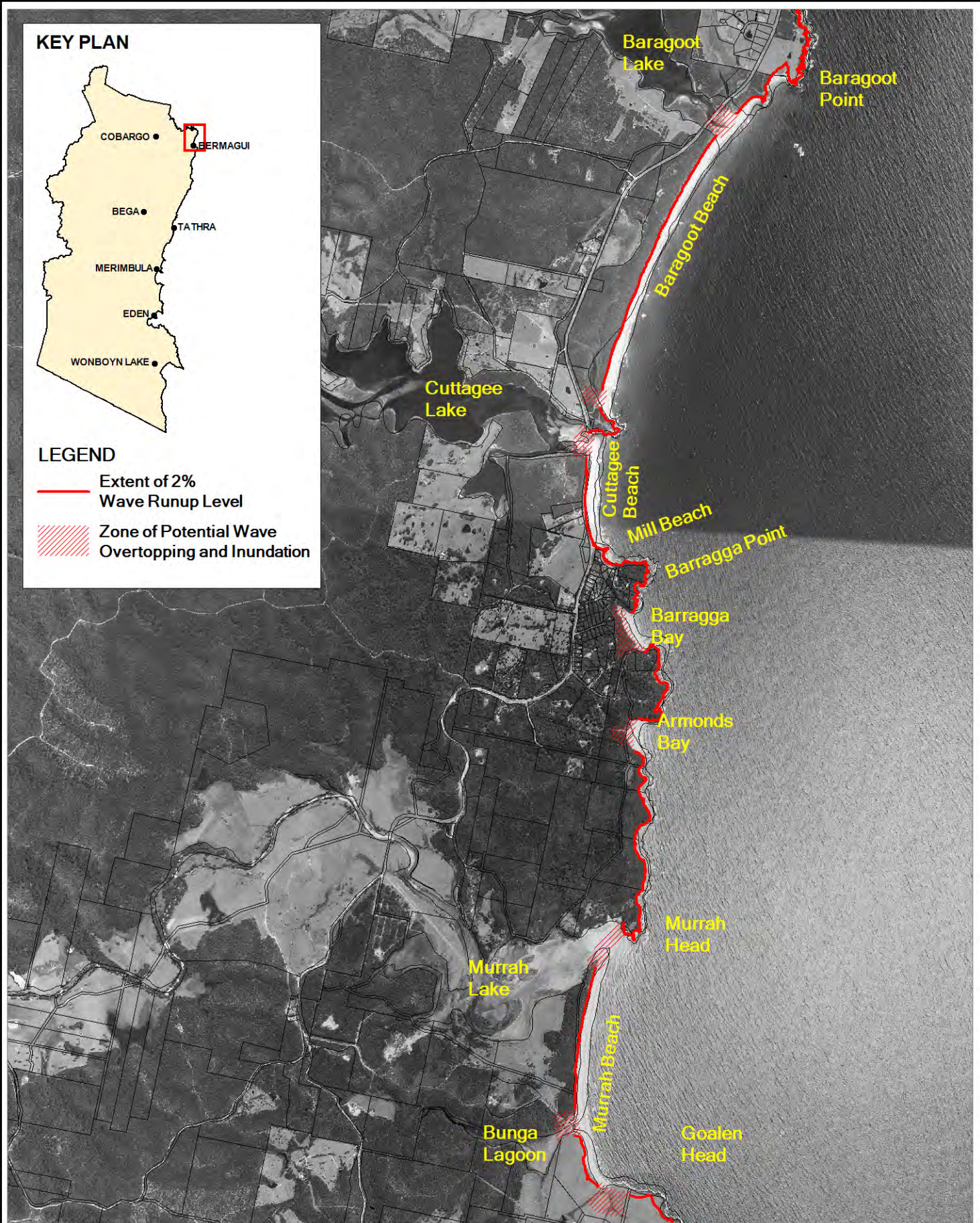


**KEY PLAN**



**LEGEND**

-  Extent of 2% Wave Runup Level
-  Zone of Potential Wave Overtopping and Inundation

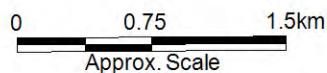


Title:  
**Wave Runup Hazard Mapping  
Cuttagee / Murrumbidgee Coast**

Figure:  
**G-2**

Rev:  
**A**



BMT WBM endeavours to ensure that the information provided in this map is correct at the time of publication. BMT WBM does not warrant, guarantee or make representations regarding the currency and accuracy of information contained in this map.

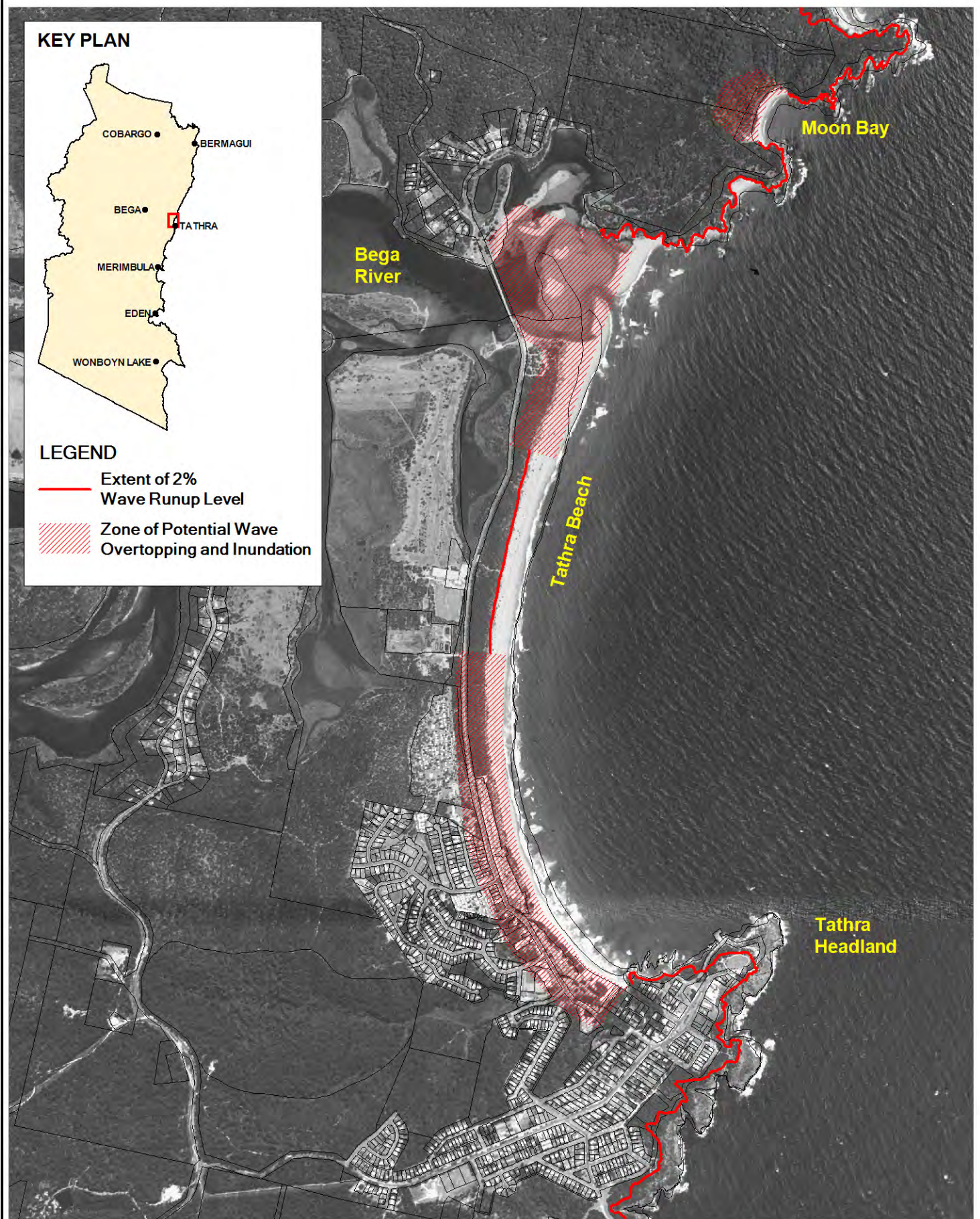


**KEY PLAN**



**LEGEND**

-  Extent of 2% Wave Runup Level
-  Zone of Potential Wave Overtopping and Inundation

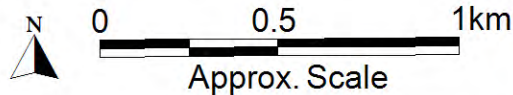


Title:  
**Wave Runup Hazard Mapping  
Tathra Bay**

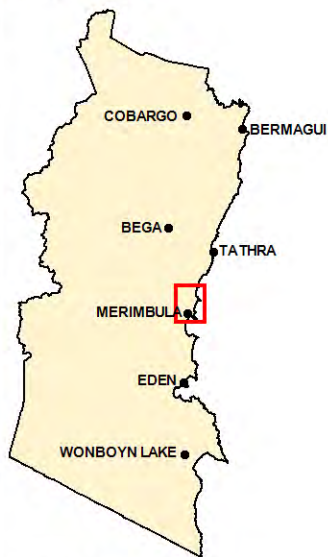
Figure:  
**G-3**

Rev:  
**A**

BMT WBM endeavours to ensure that the information provided in this map is correct at the time of publication. BMT WBM does not warrant, guarantee or make representations regarding the currency and accuracy of information contained in this map.

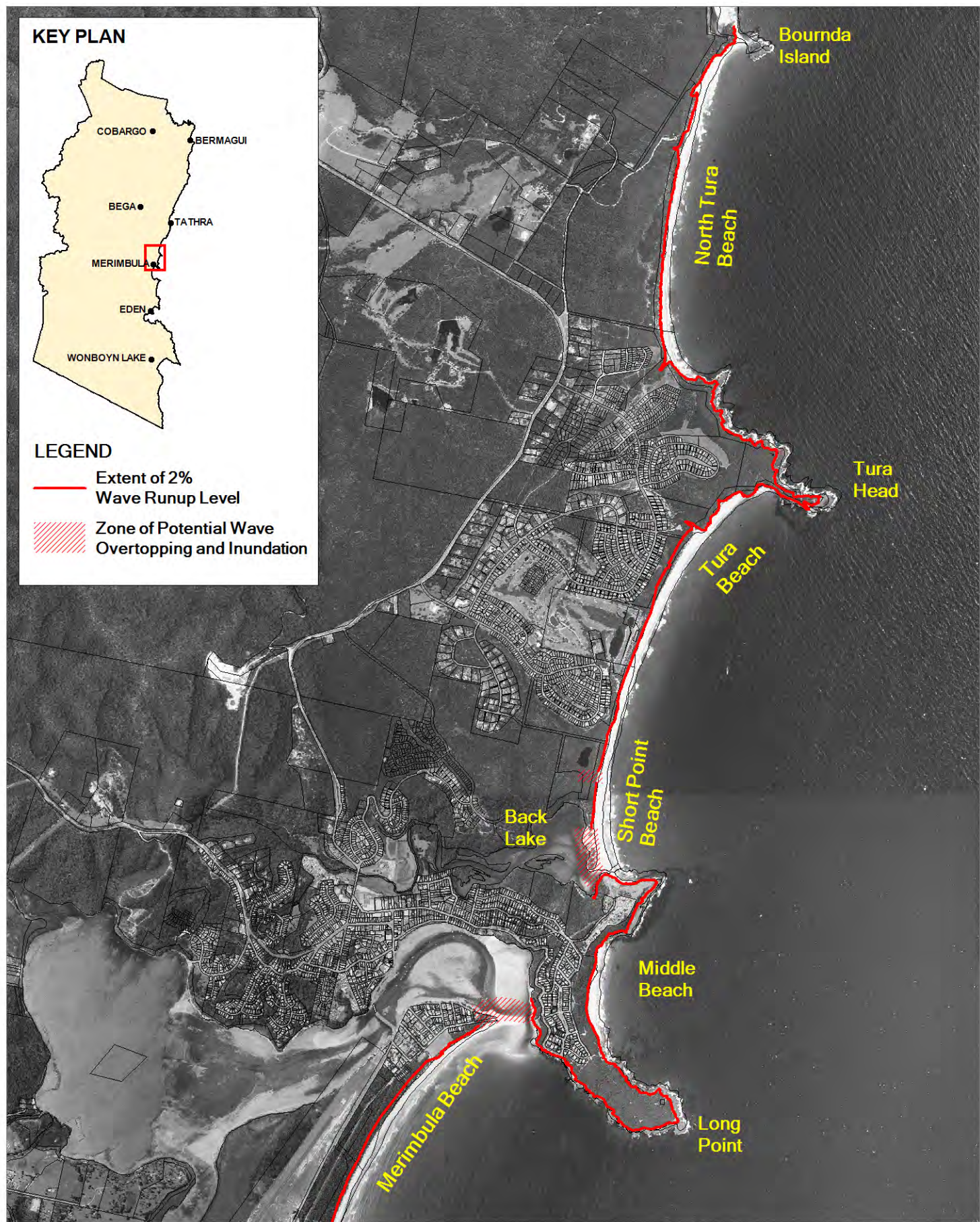


**KEY PLAN**



**LEGEND**

- Extent of 2% Wave Runup Level
- ▨ Zone of Potential Wave Overtopping and Inundation

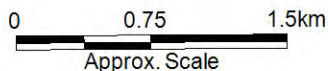


Title:  
**Wave Runup Hazard Mapping  
Merimbula Coast - North**

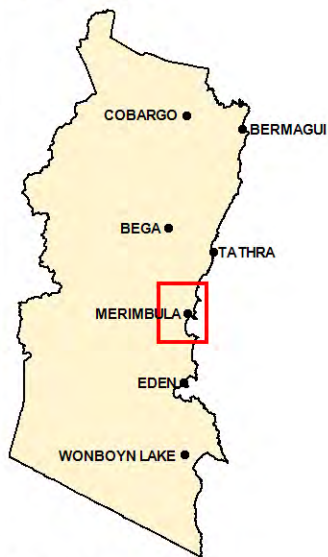
Figure:  
**G-4**

Rev:  
**A**



BMT WBM endeavours to ensure that the information provided in this map is correct at the time of publication. BMT WBM does not warrant, guarantee or make representations regarding the currency and accuracy of information contained in this map.

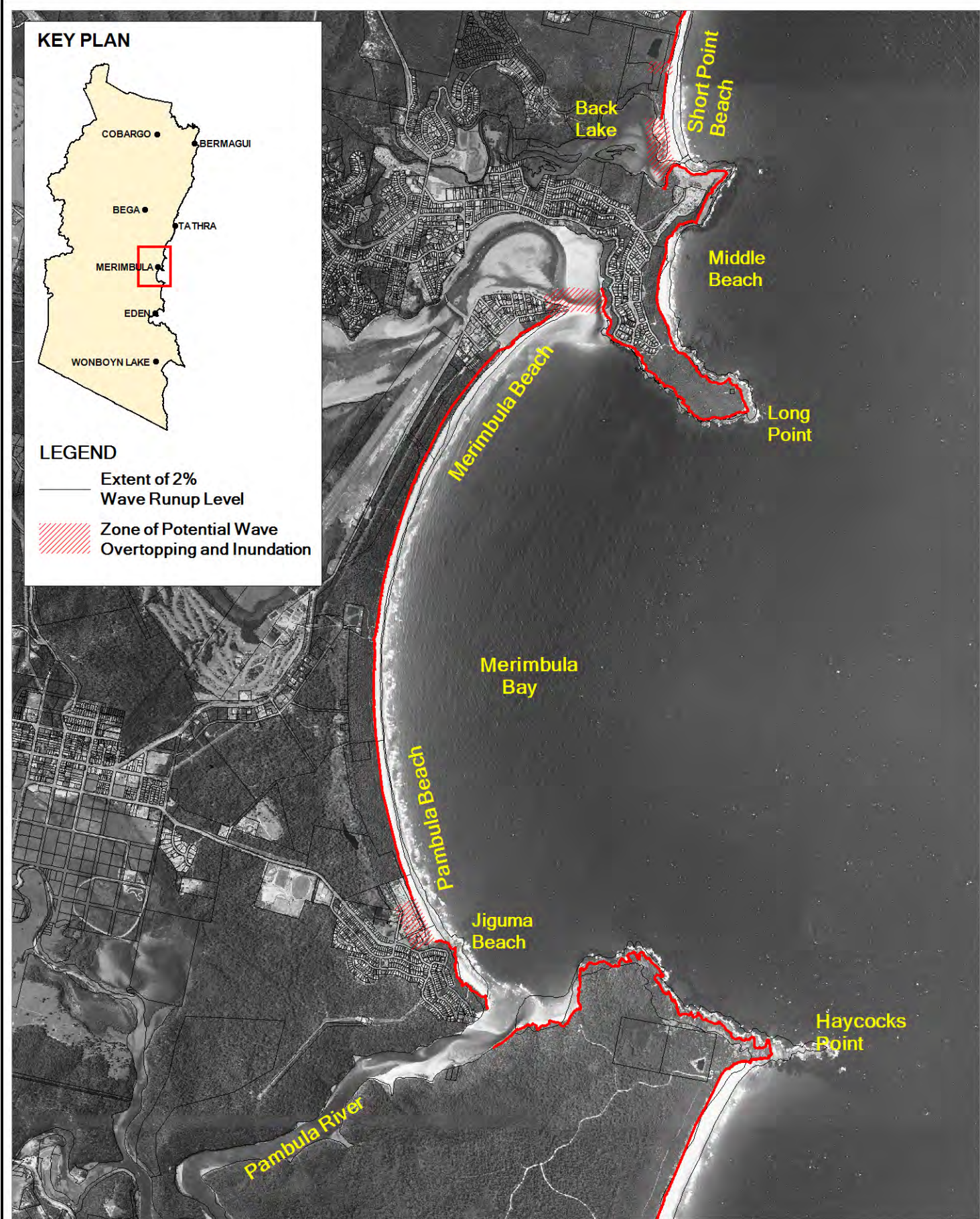


**KEY PLAN**



**LEGEND**

-  Extent of 2% Wave Runup Level
-  Zone of Potential Wave Overtopping and Inundation

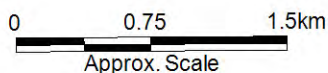


Title:  
**Wave Runup Hazard Mapping  
Merimbula Coast - South**

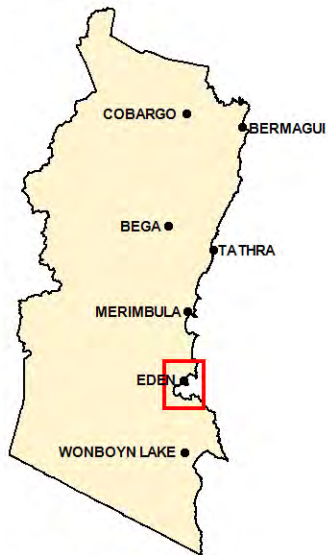
Figure:  
**G-5**

Rev:  
**A**

BMT WBM endeavours to ensure that the information provided in this map is correct at the time of publication. BMT WBM does not warrant, guarantee or make representations regarding the currency and accuracy of information contained in this map.

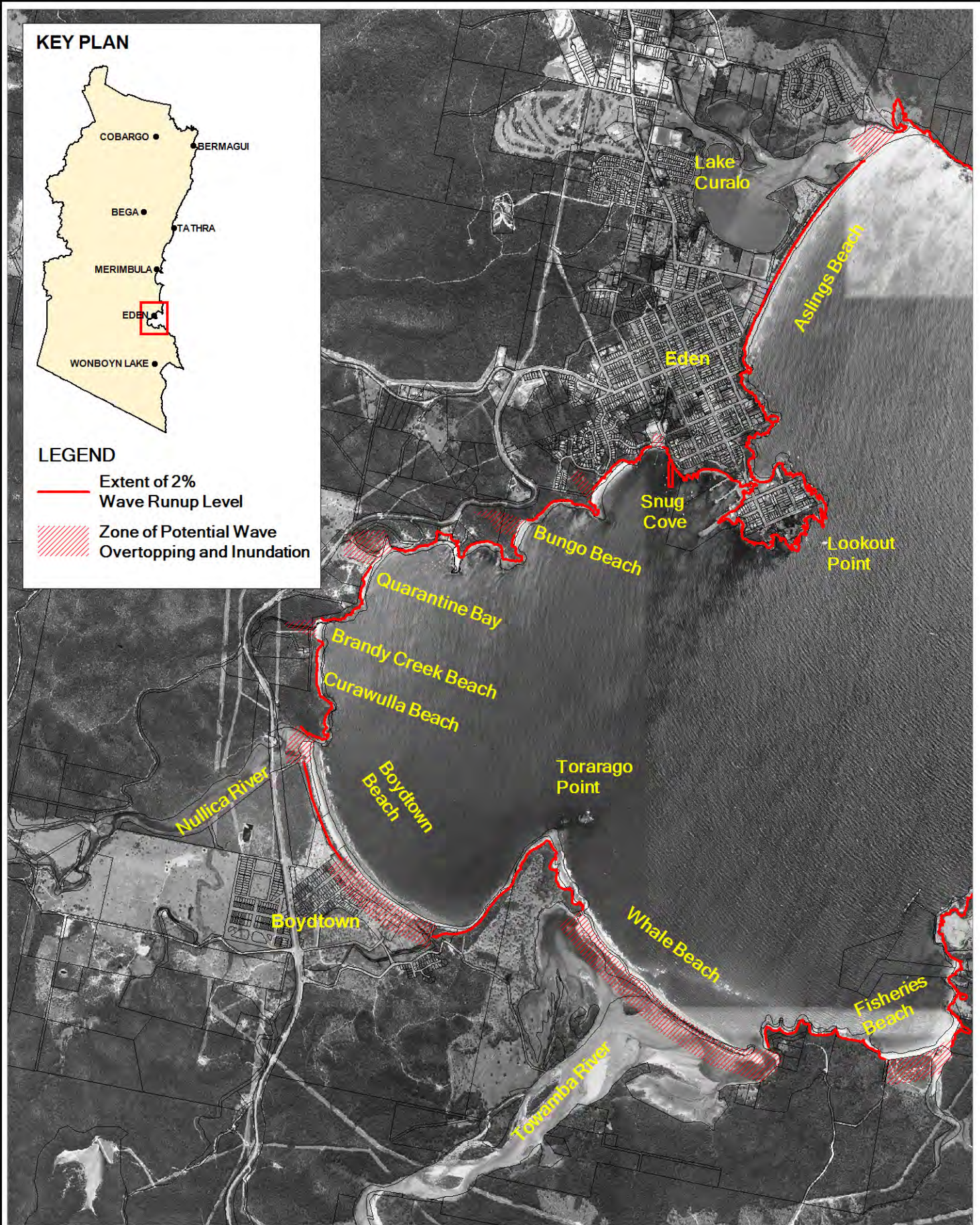


**KEY PLAN**



**LEGEND**

- Extent of 2% Wave Runup Level
- ▨ Zone of Potential Wave Overtopping and Inundation

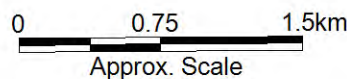


Title:  
**Wave Runup Hazard Mapping  
Twofold Bay**

Figure:  
**G-6**

Rev:  
**A**



BMT WBM endeavours to ensure that the information provided in this map is correct at the time of publication. BMT WBM does not warrant, guarantee or make representations regarding the currency and accuracy of information contained in this map.

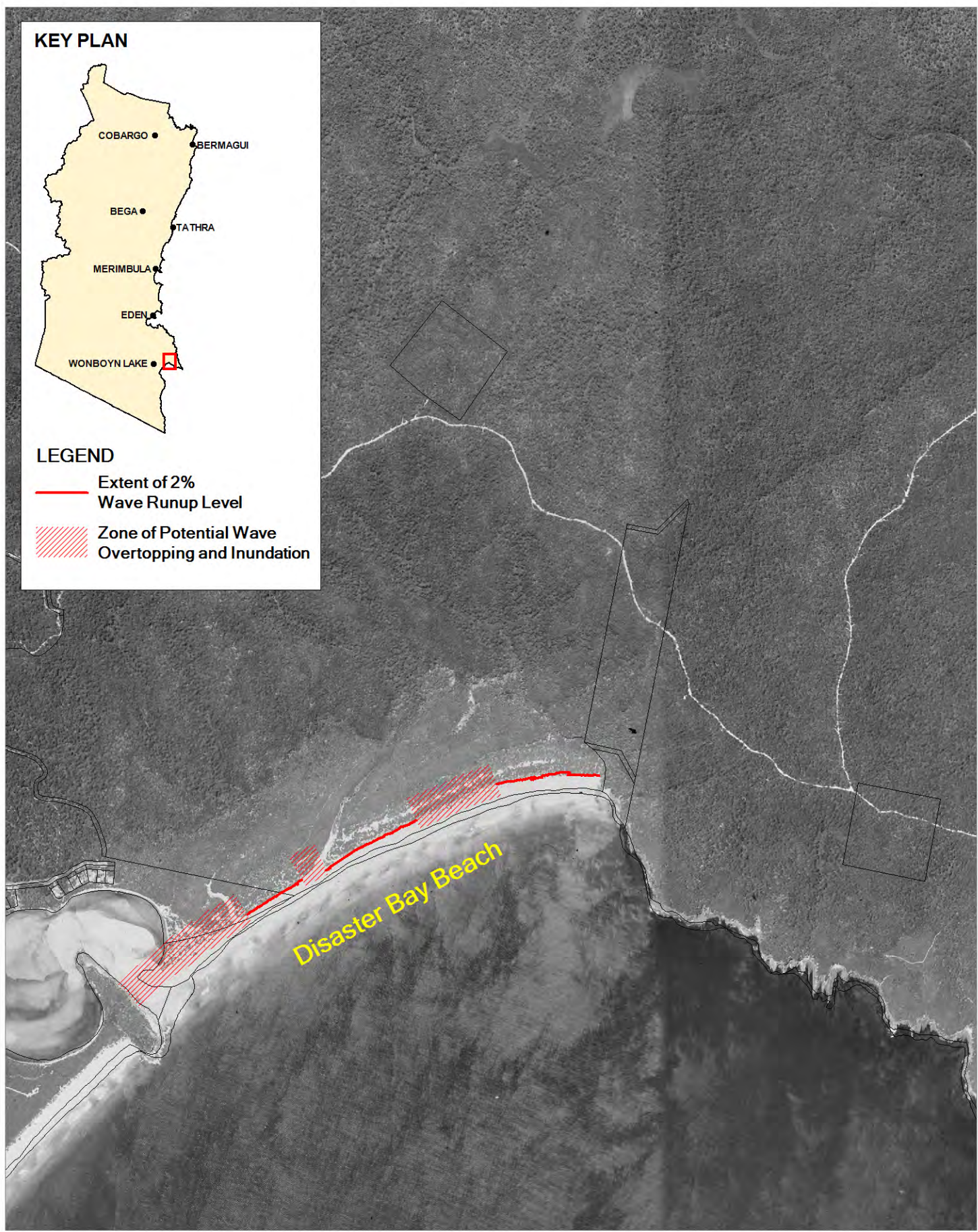


**KEY PLAN**



**LEGEND**

-  Extent of 2% Wave Runup Level
-  Zone of Potential Wave Overtopping and Inundation



Disaster Bay Beach

Title:  
**Wave Runup Hazard Mapping  
Disaster Bay Beach**

Figure:  
**G-7**

Rev:  
**A**

BMT WBM endeavours to ensure that the information provided in this map is correct at the time of publication. BMT WBM does not warrant, guarantee or make representations regarding the currency and accuracy of information contained in this map.

