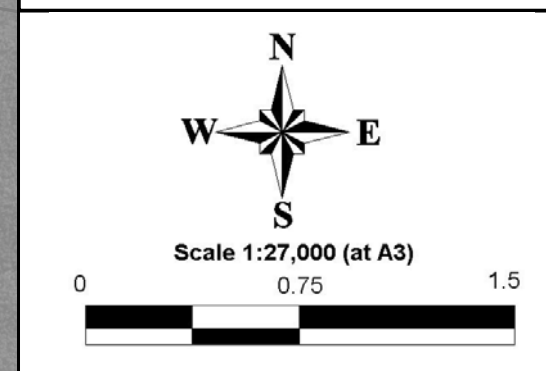



### LEGEND

- LEP Zones
- FPCC Category 1:
  - 1A: Flow conveyance and storage areas in the 1% AEP Flood
  - 1B: H6 Hazard in the 1% AEP Flood
- FPCC Category 2:
  - 2A: Flow conveyance in the 0.5% AEP Flood
  - 2B: Flood hazard H5 in the 1% AEP Flood
  - 2C: Emergency response-isolated and submerged areas
  - 2D: Emergency response-isolated but elevated areas
  - 2E: Flood hazard H6 in the 0.5% AEP Flood
- FPCC Category 3: Outside FPCC2-generally below the 1% AEP Flood and the freeboard
- FPCC Category 4: Outside FPCC3, but within the PMF

Notes:  
Aerial photograph: Google Satellite 2019  
Only areas subject to inundation depths of more than 0.1 metres are displayed

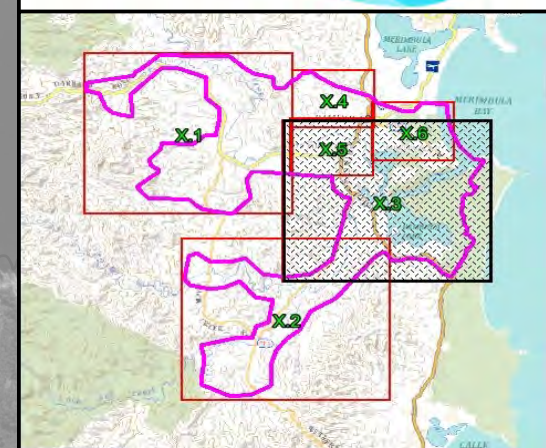
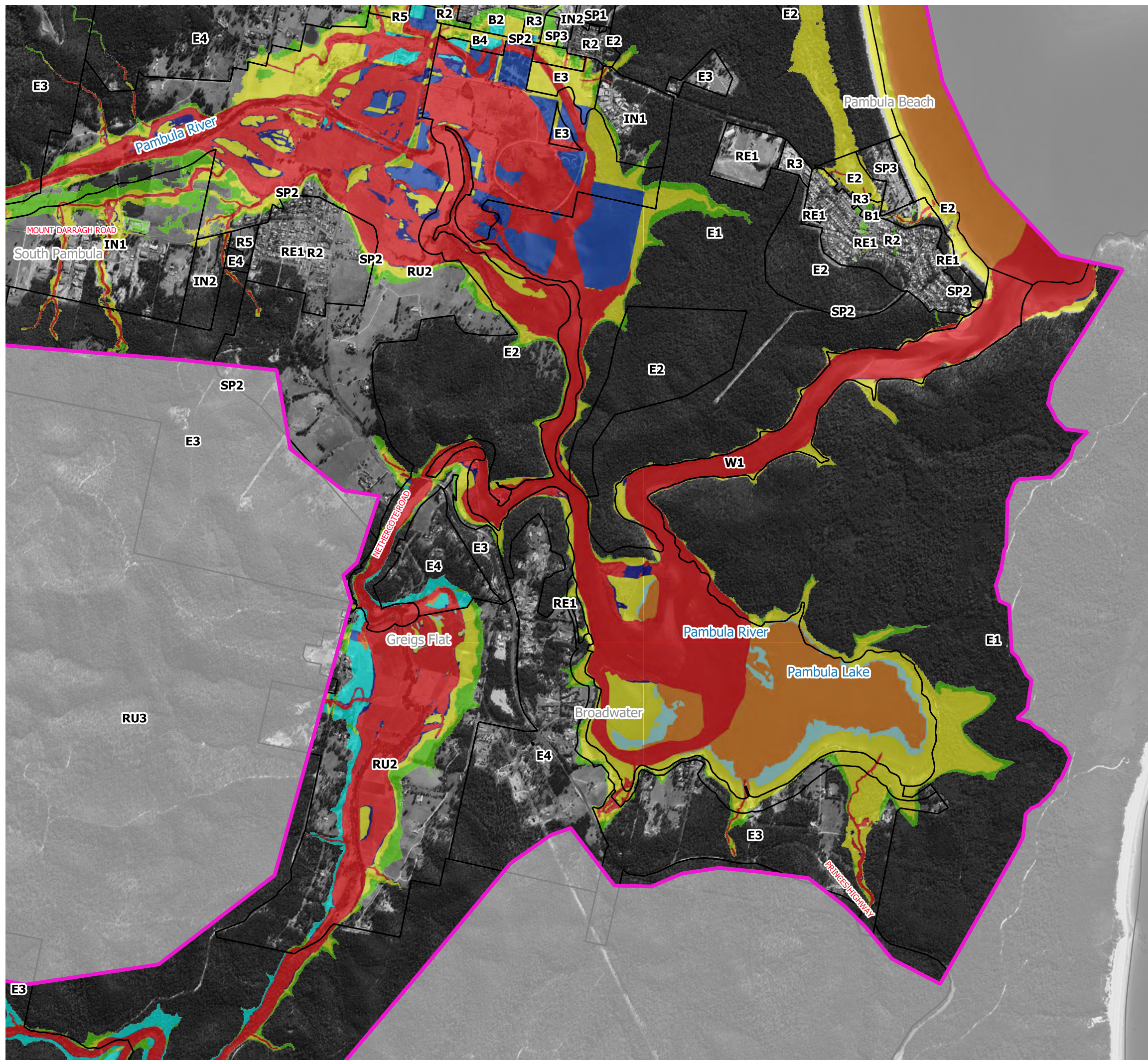


**Figure 61.2  
Flood Planning  
Constraints Mapping**

Prepared By:  
 **Catchment Simulation Solutions**  
Suite 10.01, 70 Phillip St  
Sydney, NSW 2000

File Name: Figure 61 Flood Planning Constraints Mapping

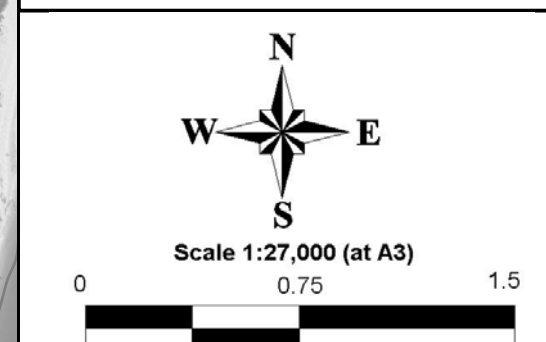




### LEGEND

- LEP Zones
- FPCC Category 1:**
- 1A: Flow conveyance and storage areas in the 1% AEP Flood
  - 1B: H6 Hazard in the 1% AEP Flood
- FPCC Category 2:**
- 2A: Flow conveyance in the 0.5% AEP Flood
  - 2B: Flood hazard H5 in the 1% AEP Flood
  - 2C: Emergency response-isolated and submerged areas
  - 2D: Emergency response-isolated but elevated areas
  - 2E: Flood hazard H6 in the 0.5% AEP Flood
- FPCC Category 3:** Outside FPCC2-generally below the 1% AEP Flood and the freeboard
- FPCC Category 4:** Outside FPCC3, but within the PMF

Notes:  
Aerial photograph: Google Satellite 2019  
Only areas subject to inundation depths of more than 0.1 metres are displayed

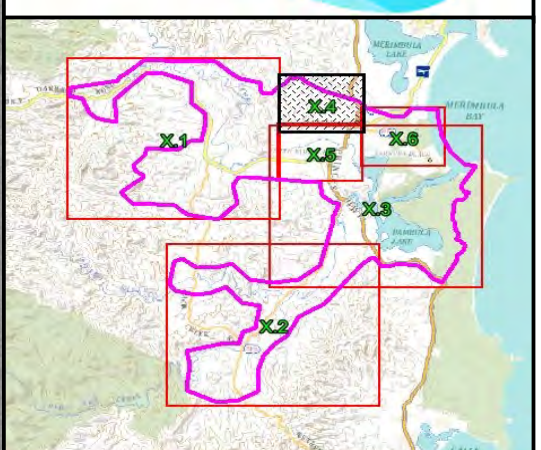
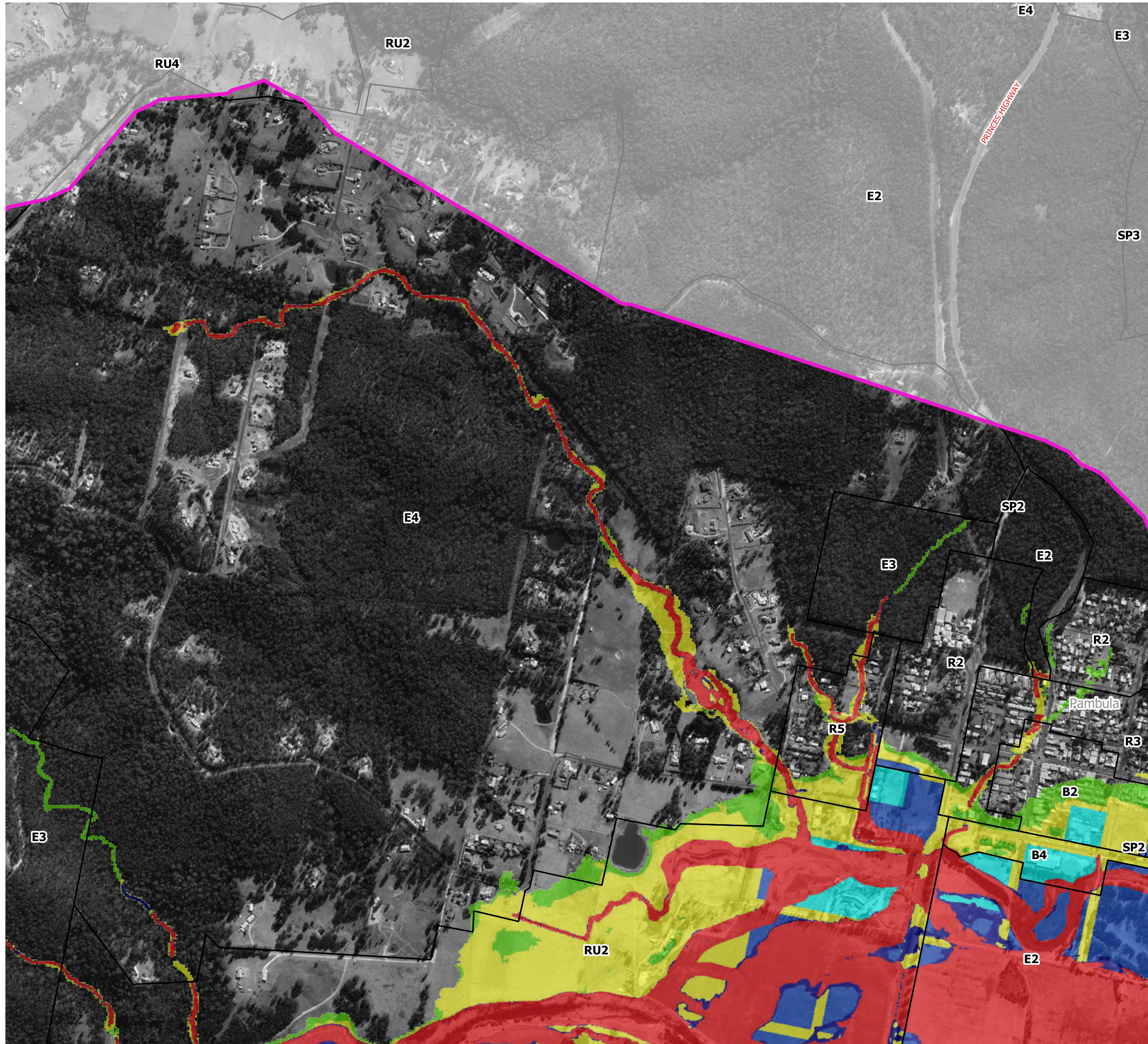


**Figure 61.3  
Flood Planning  
Constraints Mapping**

Prepared By:  
 **Catchment Simulation Solutions**  
Suite 10.01, 70 Phillip St  
Sydney, NSW 2000

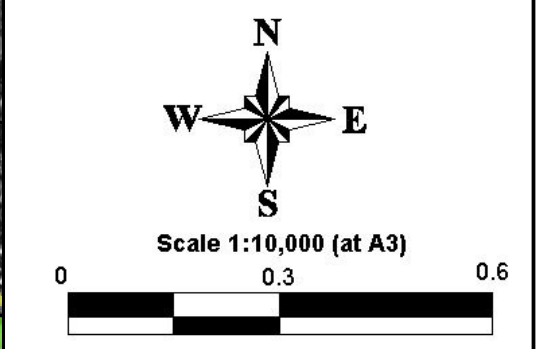
File Name: Figure 61 Flood Planning Constraints Mapping






LEGEND	
	LEP Zones
<b>FPCC Category 1:</b>	
	1A: Flow conveyance and storage areas in the 1% AEP Flood
	1B: H6 Hazard in the 1% AEP Flood
<b>FPCC Category 2:</b>	
	2A: Flow conveyance in the 0.5% AEP Flood
	2B: Flood hazard H5 in the 1% AEP Flood
	2C: Emergency response-isolated and submerged areas
	2D: Emergency response-isolated but elevated areas
	2E: Flood hazard H6 in the 0.5% AEP Flood
	FPCC Category 3: Outside FPCC2-generally below the 1% AEP Flood and the freeboard
	FPCC Category 4: Outside FPCC3, but within the PMF

Notes:  
Aerial photograph: Google Satellite 2019  
Only areas subject to inundation depths of more than 0.1 metres are displayed

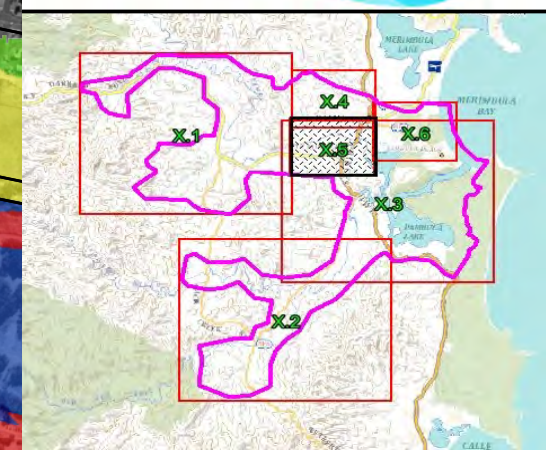
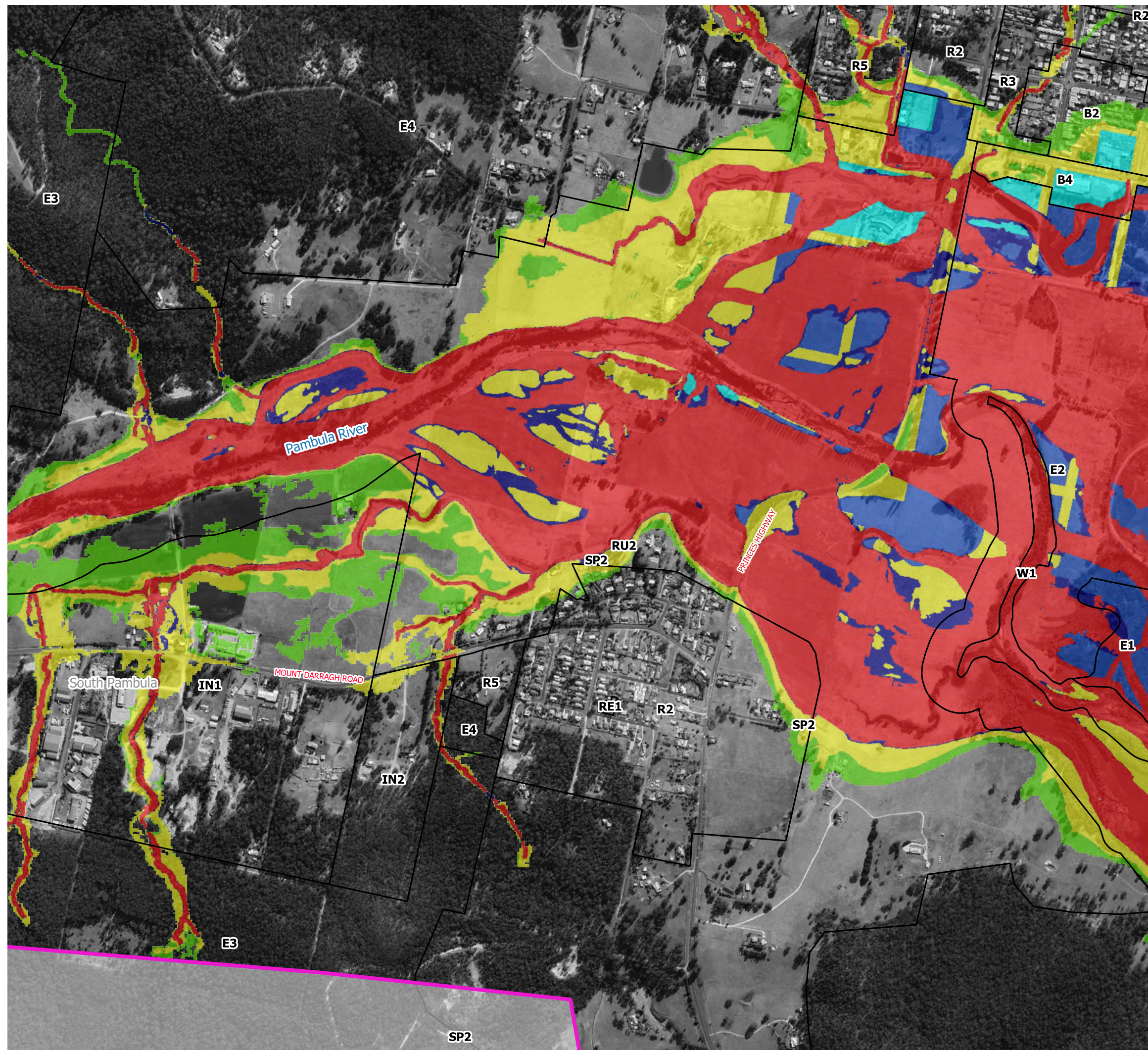


**Figure 61.4  
Flood Planning  
Constraints Mapping**

Prepared By:  
 **Catchment Simulation Solutions**  
Suite 10.01, 70 Phillip St  
Sydney, NSW 2000

File Name: Figure 61 Flood Planning Constraints Mapping

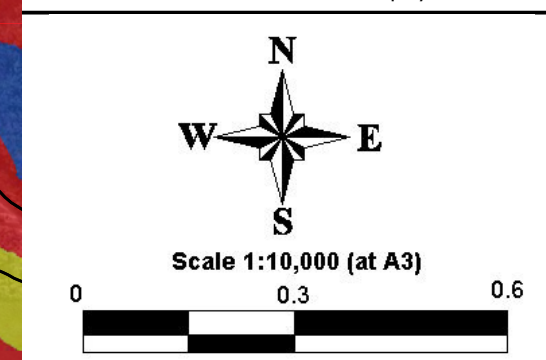




**LEGEND**

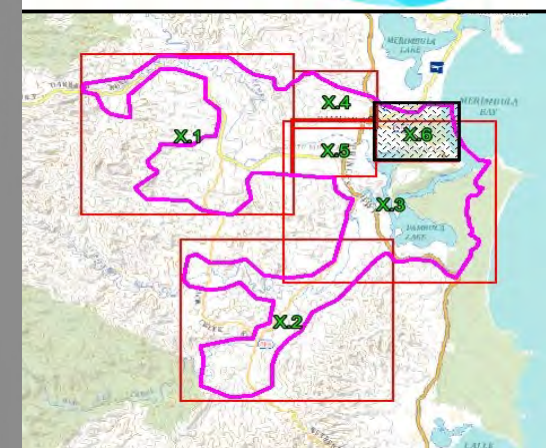
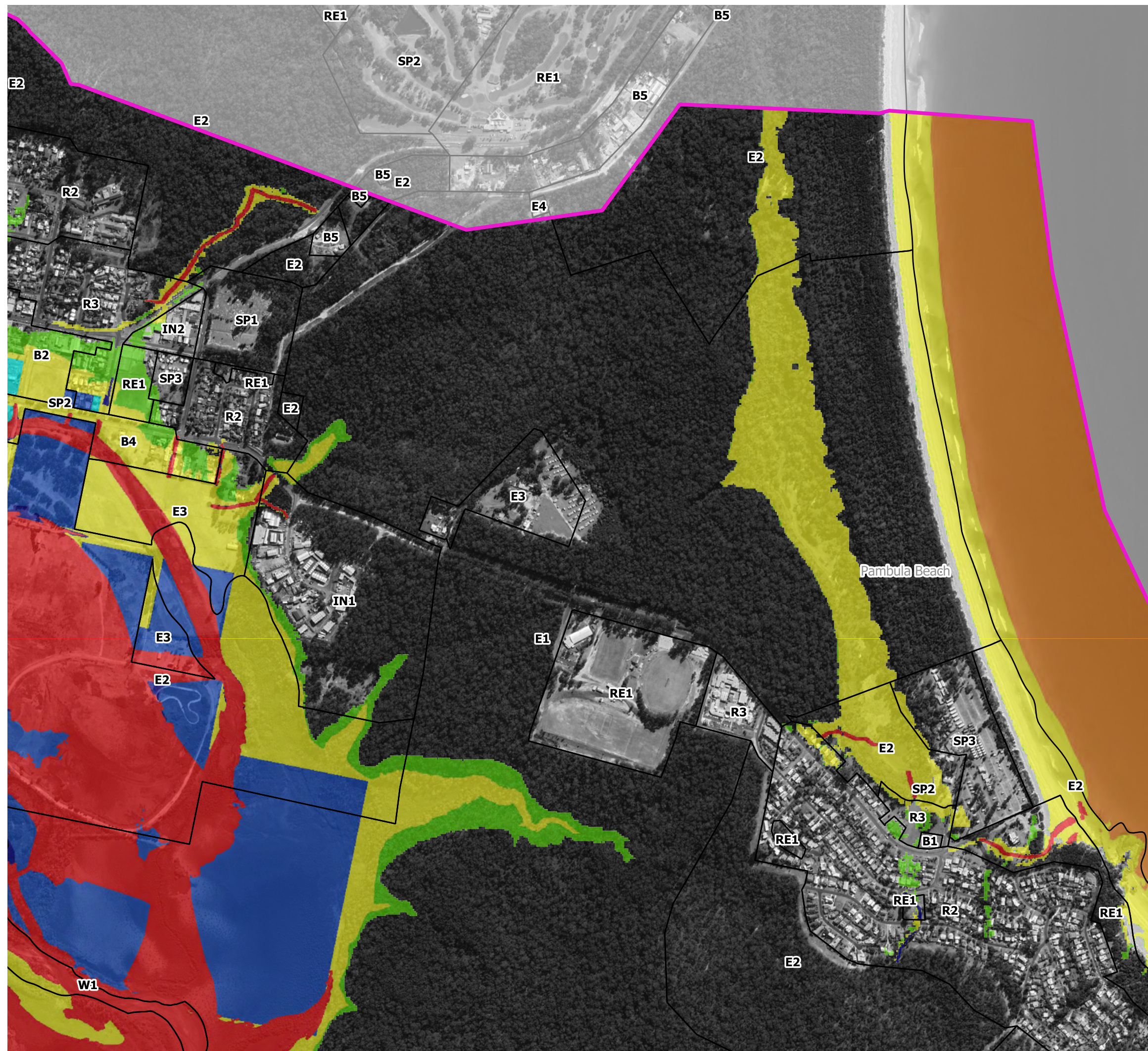
- LEP Zones
- FPCC Category 1:**
  - 1A: Flow conveyance and storage areas in the 1% AEP Flood
  - 1B: H6 Hazard in the 1% AEP Flood
- FPCC Category 2:**
  - 2A: Flow conveyance in the 0.5% AEP Flood
  - 2B: Flood hazard H5 in the 1% AEP Flood
  - 2C: Emergency response-isolated and submerged areas
  - 2D: Emergency response-isolated but elevated areas
  - 2E: Flood hazard H6 in the 0.5% AEP Flood
- FPCC Category 3:** Outside FPCC2-generally below the 1% AEP Flood and the freeboard
- FPCC Category 4:** Outside FPCC3, but within the PMF

Notes:  
Aerial photograph: Google Satellite 2019  
Only areas subject to inundation depths of more than 0.1 metres are displayed



**Figure 61.5  
Flood Planning  
Constraints Mapping**





**LEGEND**

LEP Zones

**FPCC Category 1:**

- 1A: Flow conveyance and storage areas in the 1% AEP Flood
- 1B: H6 Hazard in the 1% AEP Flood

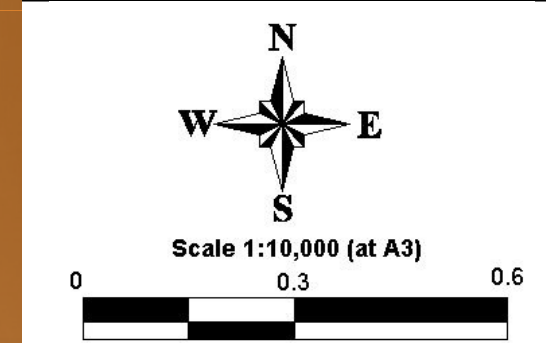
**FPCC Category 2:**

- 2A: Flow conveyance in the 0.5% AEP Flood
- 2B: Flood hazard H5 in the 1% AEP Flood
- 2C: Emergency response-isolated and submerged areas
- 2D: Emergency response-isolated but elevated areas
- 2E: Flood hazard H6 in the 0.5% AEP Flood

**FPCC Category 3:** Outside FPCC2-generally below the 1% AEP Flood and the freeboard

**FPCC Category 4:** Outside FPCC3, but within the PMF

Notes:  
Aerial photograph: Google Satellite 2019  
Only areas subject to inundation depths of more than 0.1 metres are displayed



**Figure 61.6  
Flood Planning  
Constraints Mapping**

Prepared By:  
**Catchment Simulation Solutions**  
Suite 10.01, 70 Phillip St  
Sydney, NSW 2000

File Name: Figure 61 Flood Planning Constraints Mapping