

DRAFT

spiire



COASTAL ACCESSIBILITY PROJECTS

BRUCE STEER POOL – BERMAGUI

SHORT POINT – MERIMBULA

PAMBULA BEACH RESERVE – PAMBULA BEACH

PREPARED BY SPIIRE FOR BEGA VALLEY SHIRE COUNCIL / SEPTEMBER 2016

01 INTRODUCTION

DRAFT

Bega Valley Shire Council (BVSC) has engaged Spiire Australia Pty. Ltd. to develop Coastal Accessibility Plans for three key sites within the municipality. The sites are Bruce Steer Pool in Bermagui, Short Point in Merimbula and Pambula Beach Reserve at Pambula Beach.

The overarching objective of the project is to improve accessibility to facilities and features at each site. Further aims and objectives specific to each site are outlined further below.

The project has explored issues and opportunities, site specific challenges and community comments and ideas for site improvements. The information gathered has been distilled in order to prepare the Coastal Accessibility Plans. The Plans describe the design intent, recommendations and estimates of cost which provide a framework for the future implementation of prioritised and budgeted works.

1.1 THE PROJECT BRIEF

The Project Brief recognises that the unique coastal environment of the Bega Valley Shire is one of its greatest attractions for residents and visitors. The rugged coastline is dynamic, varied and generally pristine. The Shire's coastal environments provide a range of recreational opportunities such as swimming, surfing, fishing, strolling along the beach or resting to absorb the magnificent views.

While the coastline is a key identifying feature of the Shire, it also severely restricts people with mobility limitations and in many cases completely prevents them from enjoying the natural assets of the coast. This project is focused on improving accessibility to three key coastal locations to break down some of the barriers that those with a disability or suffering injuries, the elderly and the very young are presently subjected to.

1.2 WHAT IS A COASTAL ACCESSIBILITY PLAN?

A Coastal Accessibility Plan is a strategic document that outlines the intended developments for a site. In the case of this project the Plans will investigate and provide guidance on:

- ▶ Improving accessibility to all features and facilities of the sites.
- ▶ Promoting a more active and inclusive local community.
- ▶ Providing facilities which will benefit those with mobility limitation as well as those living with injury and/or disability.
- ▶ Protecting and enhancing coastal vegetation, reducing weed infestation and improving erosion and environmental values through revegetation.
- ▶ Improving visual amenity and enhancing recreational opportunities.
- ▶ Improving community engagement and educational opportunities inherent to the site.
- ▶ Recognition of sites of Aboriginal and European heritage.
- ▶ Enhancing visitor and tourist experience.



Bruce Steer Pool, Bermagui



Pambula Beach



Short Point, Merimbula

2.2 SITE LOCATIONS

The aerial photographs below outline the location of each project site within each township



Figure 2: Bruce Steer Pool location within the Bermagui township.

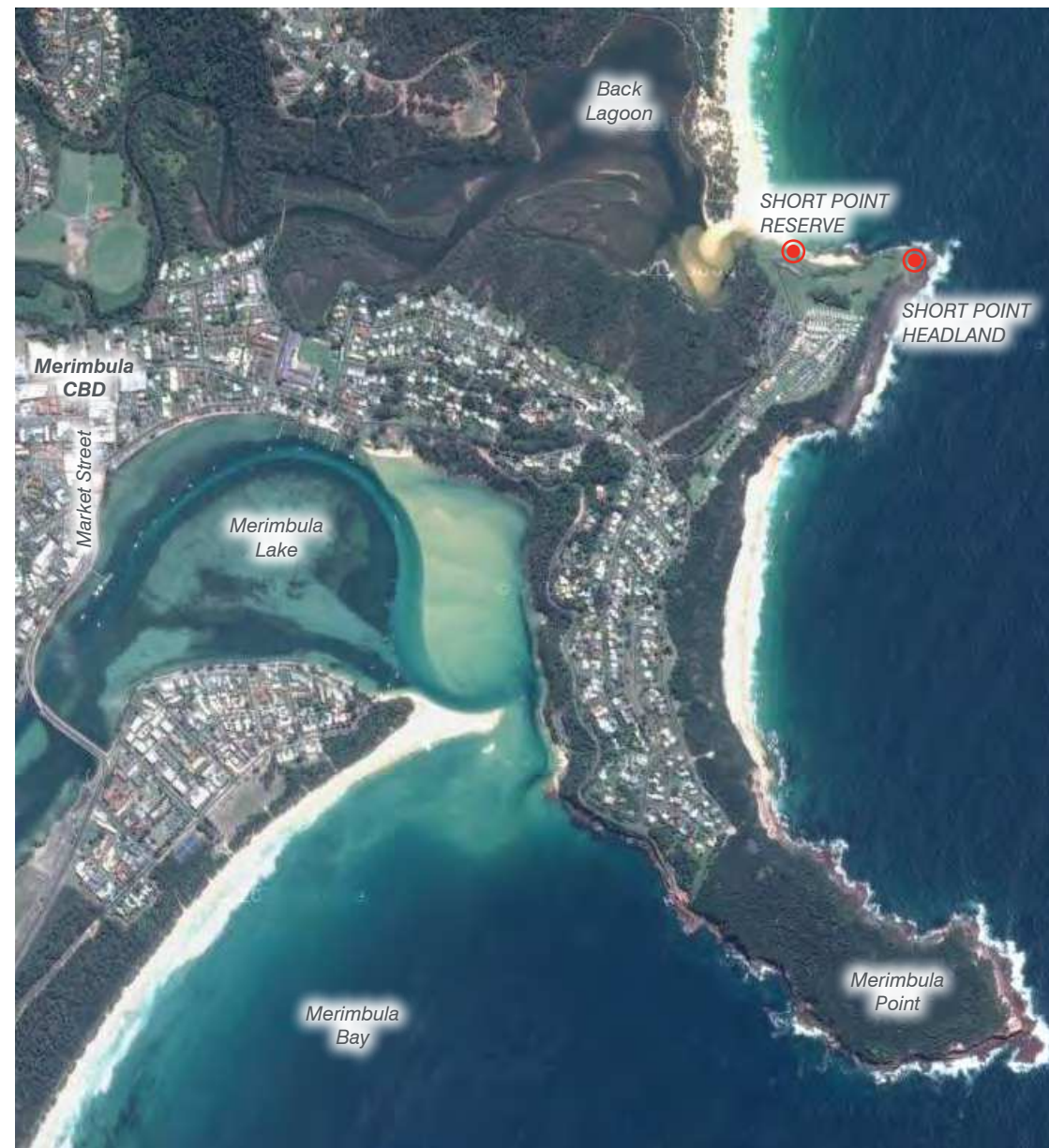


Figure 3: Short Point location within the Merimbula township.



Figure 4: Pambula Beach Reserve location within the Pambula Beach township.

DRAFT

BRUCE STEER POOL – BERMAGUI

Outcomes from the Feedback Survey in regard to Bruce Steer Pool are as follows:

- ▶ Respondents visit a few times a week (31%) followed by weekly and monthly (both 27%).
- ▶ 75% of respondents travel to Bruce Steer Pool by car.
- ▶ The three activities that respondents participate in most at Bruce Steer Pool are swimming (96%), enjoying the scenery (43%) and exercising/fitness (36%).
- ▶ Key things that respondents think most need improving at Bruce Steer Pool include:
 - ▶ amenities including disabled toilets and improved showers
 - ▶ ramp and hand rail providing access to the water
 - ▶ shade and picnic settings
 - ▶ repairs to the stingray net
 - ▶ disabled parking
 - ▶ pathways from parking areas to beach
 - ▶ vegetation maintenance and revegetation.



Word graphic showing responses to 'Please specify three things that most need improving at Bruce Steer Pool'.



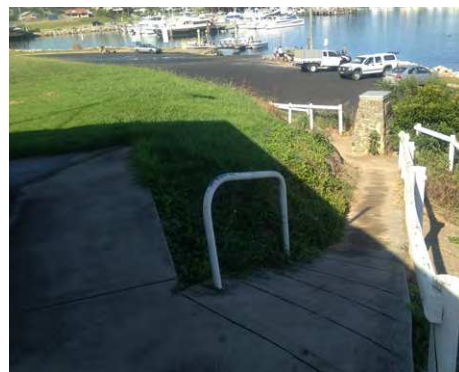
Word graphic showing responses to 'What are the three things that make Bruce Steer Pool enjoyable?'



Word graphic showing responses to 'Please provide any further comments you wish to make about Bruce Steer Pool'.

DRAFT

6.7 BRUCE STEER POOL EXISTING CONDITIONS PHOTOS AND ANALYSIS PLANS



Existing features including rock groyne, navigational beacon and cairn to be retained.

Opportunity for improvements to amenities, access and fish cleaning area were identified.

Opportunity to address issues such as lack of shade, erosion and weed infestation.

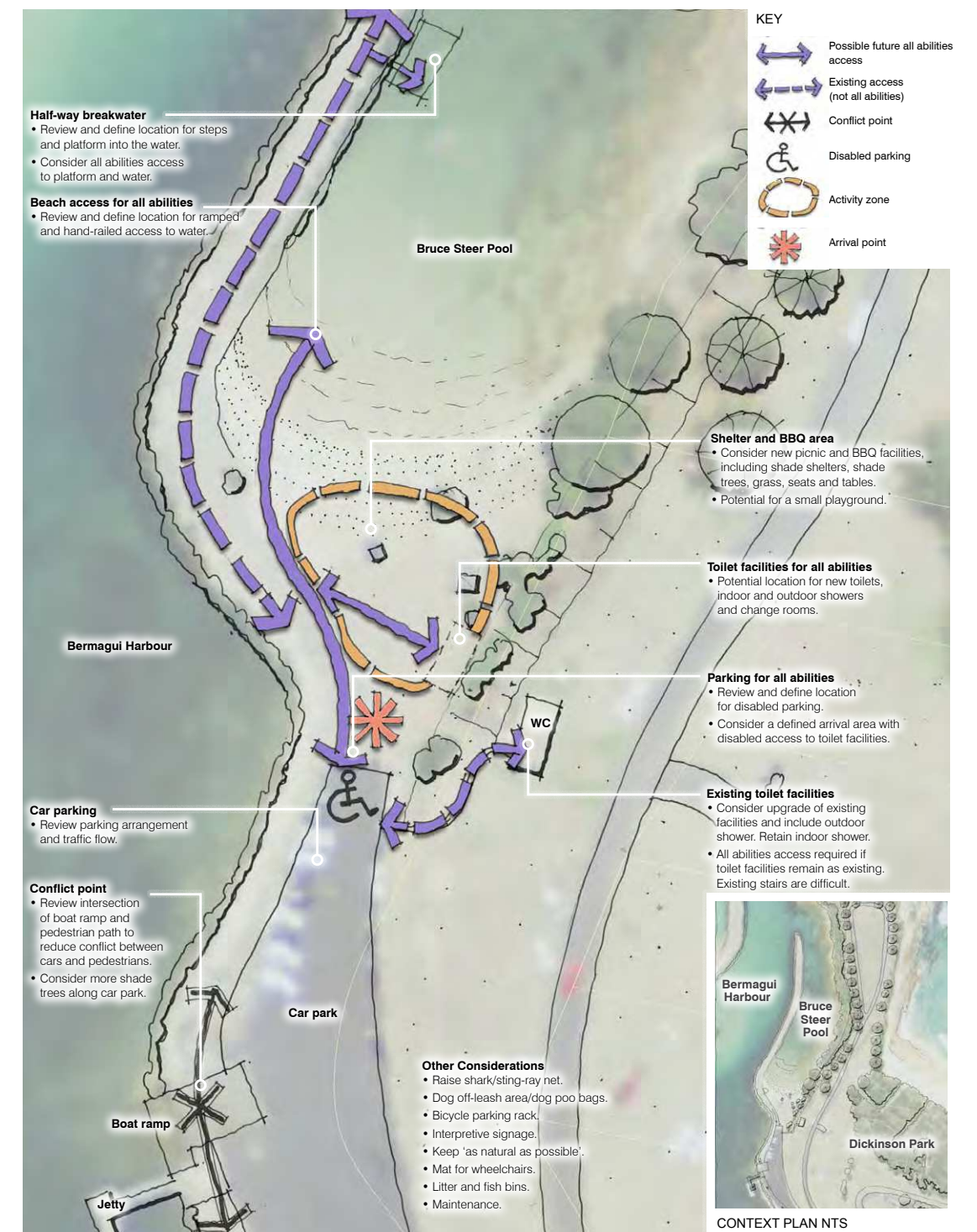


Figure 5: Bruce Steer Pool Bermagui – Analysis, Opportunities and Constraints Plan

08 COASTAL ACCESSIBILITY PLANS

DRAFT

8.1 BRUCE STEER POOL, BERMAGUI

The Bruce Steer Pool precinct will provide all abilities access from the lower car park to site features and the water's edge. Improvements will include enhanced open space and facilities, upgraded toilets and showers, and layout which enhances the intrinsic landscape values of the site.

A key element of the concept is a pedestrian path which links disabled parking, amenities, picnic facilities and access into the pool itself. The path will be generous in width and be wheelchair friendly. Improved parking arrangements and pedestrian connections to the surrounding open space areas have also been addressed. Access for boat launching at the boat ramp and boat trailer queuing area has been maintained.

KEY RECOMMENDATIONS

1 ALL ABILITIES ACCESS TO THE WATER – STAGE 1

Provide an all abilities concrete walkway into the water of Bruce Steer Pool which connects with surrounding pedestrian pavement areas. The walkway will be approximately 50m long and 2m wide with DDA compliant grade of 1:20 and landings at 15m intervals as required by Australian Standards.

2 PAVED CONNECTIONS – STAGE 2

Provide wheelchair friendly paved connections between key features facilities within the precinct.

3 SEATING AREA IN THE SUN

Provide new wheelchair accessible picnic settings and seating on the eastern side of the site to enable users the opportunity to sit in the sunshine.

4 OPEN GRASS SPACE

Retain and enhance open grassed space between pathways and sand. Use adjacent paving to define grass edge to provide a continuous and easily maintained lawn area.

5 PICNIC AND SEATING NODE IN THE SHADE

Provide a bespoke shade structure which references the existing Bermagui 'timber wharf' design language and include two picnic settings. Enhance opportunities to utilise shaded area by providing two long bench seats in the sand within proximity of the shelter area.

6 SHARK/STINGRAY NET

Upgrade shark/stingray net at the northern end of the pool to ensure full net coverage during high tide.

7 NEW AMENITIES FACILITY – STAGE 3

Provide new amenities building the bottom/lower level of the embankment for improved all abilities access. Provide disabled, male and female toilets within the facility. Consider unisex toilets and provision of baby change room. Provide indoor showers and outdoor shower. The new amenities building should also reference the existing Bermagui 'timber wharf' design language. Investigate service connections for water, sewer and power.

8 OPEN GRASS ARRIVAL AREA

Improve arrival area adjacent Beacon with seating and interpretive signage. Retain navigational beacon. Consider providing a community noticeboard and bicycle rack.

9 CAR PARKING + DISABLED SPACES

Reconfigure car parking arrangements to create regular and disabled parking area that includes two dedicated disabled car spaces that meet Australian Standards and are connected to facilities with pathways. Line-mark two disabled spaces. Allow for possible increase to four disabled spaces following further consultation. The parking area provides marked spaces facing the water. Provide a continuous path of travel from the car park to features and facilities of the site. Consider surface treatment to asphalt to define parking area.

10 BOAT QUEUING AREA

Retain existing boat queuing areas in their current form. Provide low retaining wall and connecting pathway along toe of grassed batter. Retain sufficient asphalt area for boat launching requirements and the required turning radius of a service vehicle and similar sized vehicles.

11 EMBANKMENT REVEGETATION

Introduce a weed removal and revegetation program to improve the visual amenity, stability and environmental values of the embankment. Ongoing maintenance should also form part of the program. Incorporate measures for the eradication and management of vermin and feral animals.

12 STAIR AND BOARDWALK ACCESS

Improve the existing stair access between the upper and lower levels of the site. New stairs and boardwalk on steep slope will include handrails and landings as required. Retain the existing rock Cairn memorial.

13 UPPER PICNIC AREA

Replace the old amenities block with a secondary picnic area that is accessible from the top of the embankment and provides a viewing area. Investigate opportunity to re-use existing concrete slab. Provide a bespoke shade structure which references the existing Bermagui 'timber wharf' design language, and includes two picnic settings.

14 SIGNAGE

Provide new beach safety and social awareness signage in line with the Bega Valley Shire Council signage suite. Include new and additional interpretive signage where appropriate.

15 BUS/COACH PARKING

Provide bus/coach parking bay to the south where flatter land is available and minimal earthworks will be required. Connect with proposed connecting pathway to enable users to access Bruce Steer pool along toe of batter adjacent boat queuing area.

16 FISH CLEANING AND BOAT RAMP

Improve fish-cleaning and waste disposal facilities and on-going maintenance.

17 ROCK GROUYNE ACCESS

Investigate opportunity to provide concrete pathway on rock groyne.

To be finalised

07 SITE CONSULTATION RESULTS AND SUMMARY PLANS

The following summaries of feedback for each site has been collated from the community feedback survey, listening posts and site investigations. The below summaries inform the design responses and recommendations contained in the DRAFT Accessibility Plans which follow in the next Section of this Report.

7.1 BRUCE STEER POOL – BERMAGUI

ACCESSIBILITY

- ▶ Review and define location for ramped and hand-railed all abilities access to the water. Consider a mat for wheelchairs.
- ▶ Review and define location for disabled parking.
- ▶ Provide a defined arrival area with all abilities access to toilet facilities and seating areas.

TRAFFIC AND CAR PARKING

- ▶ Review car parking arrangements, traffic flow and consider best location for coach / RV turnaround and drop off area.
- ▶ Aim to reduce conflict between cars, boat launching and pedestrians at the boat ramp and car parking area.
- ▶ Consider more shade trees in car park area.

AMENITIES AND FACILITIES

- ▶ Review existing signage and consider additional interpretive signage. Consider 'positive' signage to control anti-social behaviours.
- ▶ Upgrade toilets and shower facilities, including review of location with the potential to identify new facilities at the beach level. Provide a new amenities block that includes the following facilities:
 - ▶ accessible for all
 - ▶ toilets for male, female and disabled
 - ▶ indoor showers for both male and female
 - ▶ outdoor shower
 - ▶ baby change
 - ▶ potential for unisex facilities.
- ▶ Monitor and maintain the shark / sting-ray net including repairs and ensure coverage during high water levels.
- ▶ Provide additional accessible furniture for user amenity including picnic settings, seats and bicycle parking. Locate seating to ensure shade coverage as well as seating that captures winter sunshine on the eastern side of the site.
- ▶ Upgrade shelter area with accessible pathways and seating.
- ▶ Maintain views to beacon for water vessels.

- ▶ Upgrade and manage fish cleaning area and waste disposal facilities. Review ongoing maintenance of these facilities.
- ▶ Provide new BVSC beach safety signage.

LANDSCAPE AND ENVIRONMENT

- ▶ Enhance and protect the natural qualities of the space to keep it 'as natural as possible'.
- ▶ Undertake weed removal, bank stabilisation and revegetation of the existing embankment between the upper and lower levels.

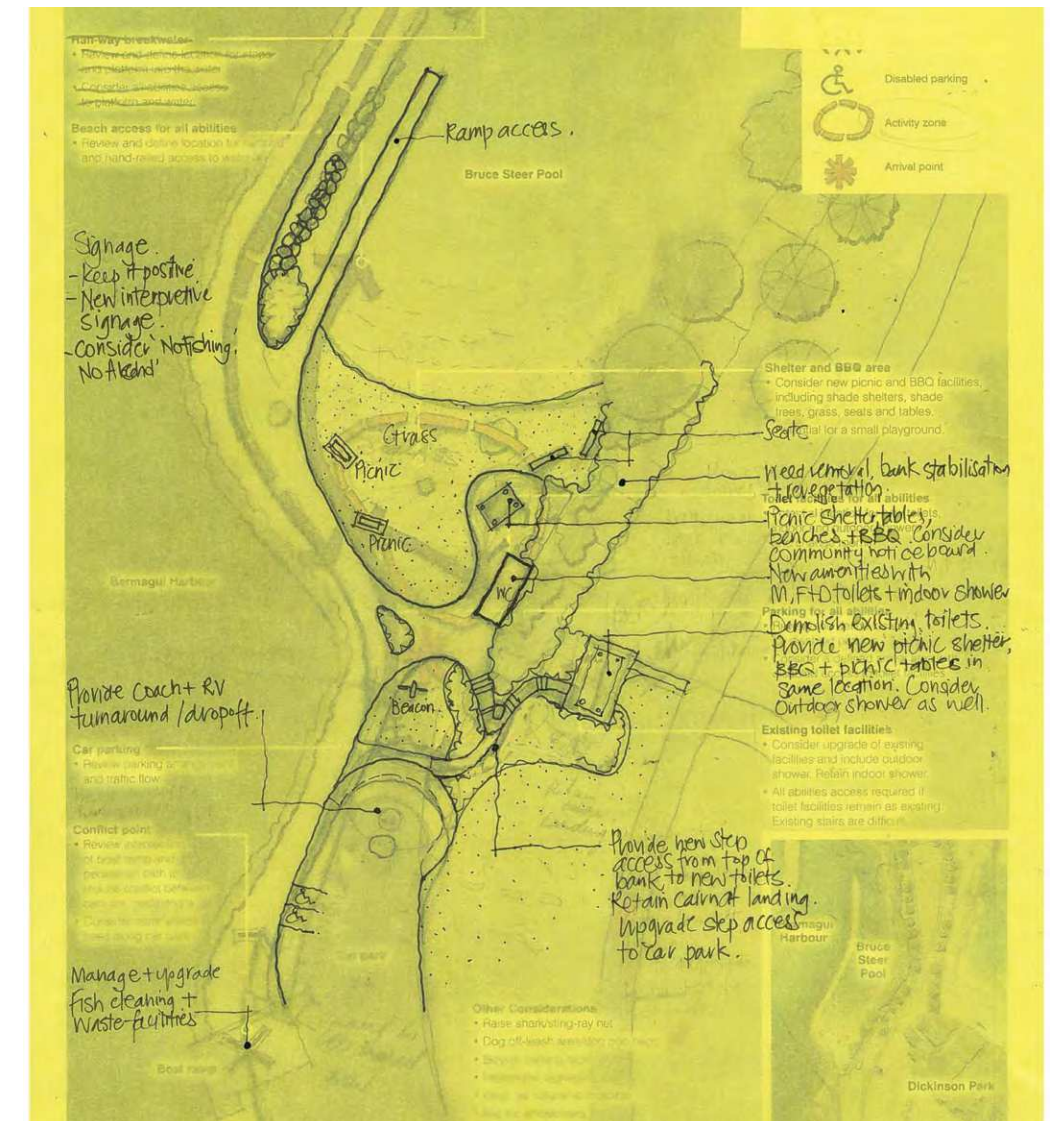


Figure 8: Bruce Steer Pool Bermagui - Consultation Results and Summary Plan

DRAFT

Legend


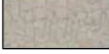










	Existing contour		Asphalt surface treatment		Grass		Long bench seating
	Evergreen trees		Asphalt		Low mass planting		Picnic setting
	Concrete paving		Timber ramp structure		Revegetation		Picnic shelter

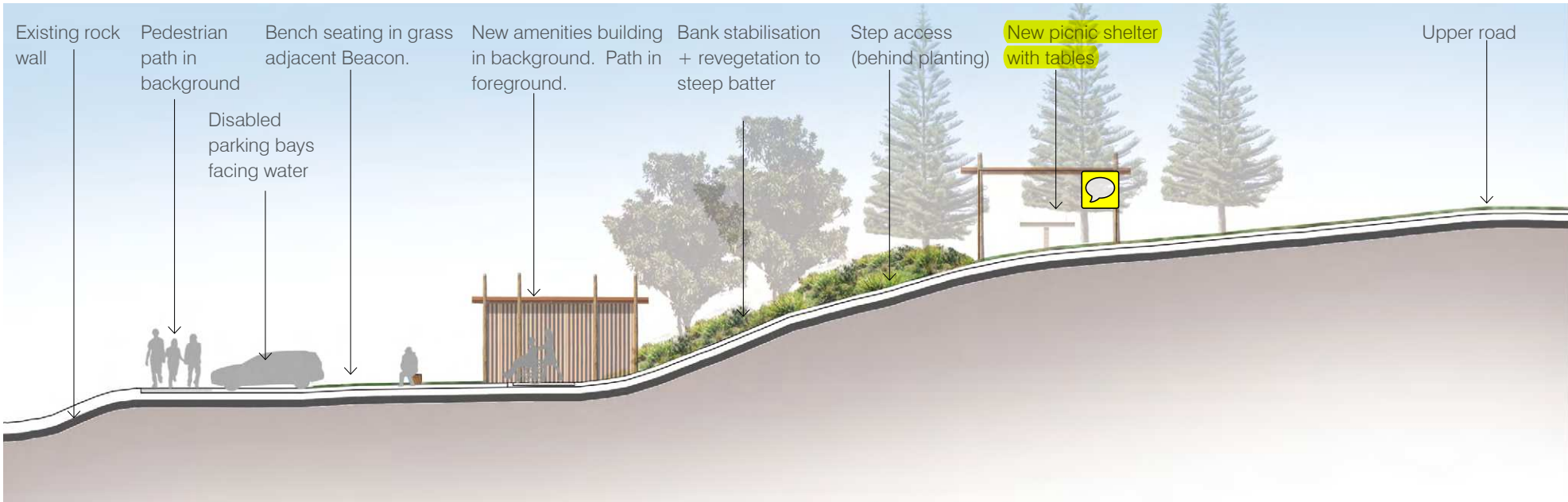


Figure 11: Bruce Steer Pool DRAFT Coastal Accessibility Plan

1:500 @ A3

INDICATIVE CROSS-SECTIONS

Section A – A’
Scale 1:200 @ A3



Item 13 - to be finalised

Section B – B’
Scale 1:200 @ A3

