

recycling  
the  
future



WASTE MANAGEMENT AND RESOURCE RECOVERY STRATEGY  
**2018-2028**

## PUBLIC EXHIBITION

The draft Strategy will be on public exhibition from August 27th, 2018 to September 14th, 2018. All submissions received will be considered and reported to Council at the meeting to be held on October 10th 2018.

Accompanying this summary is a more detailed, technical document. For further information please phone Council on 6499 2222.

Council wishes to acknowledge the assistance of Wright Corporate Strategy during the preparation of this document.



PO Box 492

Bega NSW 2550

**E:** [council@begavalley.nsw.gov.au](mailto:council@begavalley.nsw.gov.au)

**W:** [www.begavalley.nsw.gov.au](http://www.begavalley.nsw.gov.au)

**Foreword** 5

**Why we need a new Waste Management and Resource Recovery Strategy** 6

**Introduction** 7

**Strategic Initiatives** 8

**Waste management and recycling in our region** 9

**Strategic Waste Management Planning Objectives** 14

**New Waste Management and Resource Recovery Strategy** 15



**We need  
to respond  
to change.**

## **FOREWORD**

Managing waste in the Bega Valley presents significant challenges as well as many opportunities. We need to respond to change, and this document outlines how Council will work with our community to better manage our waste over the next 10 years.

Waste management has received unprecedented local, national and international media and public attention, particularly during the past year. This has helped the community understand the scale and complexity of the problem. How individual regions manage waste has global implications and Council must be on the front foot in tackling waste issues locally.

Over the past 10 years we have vastly improved the standard of our waste facilities and services but recognise that a simple ‘take, make, use and dump’ approach to resources is not sustainable. It also doesn’t capitalise on potential local and regional opportunities that exist in the resource recovery and recycling sector. As a community we need to divert more resources from landfill while pursuing opportunities to participate in ways to better use those resources locally.

This Strategy focusses on addressing the increasing pressure on our landfill from disposal of waste generated by households, business and the construction sector. The opportunities that flow from increased waste avoidance, reuse and recycling include greater business involvement, engagement of social enterprise, innovation, economic and environmental benefits and jobs.

The Bega Valley is a wonderful place to live in and visit. Council’s goal is to maintain and enhance our environment while providing a better return to our community on investment in waste services. This is an ambitious waste management strategy and it is a privilege to lead Council and our community toward delivering these goals.

**Kristy McBain**  
Mayor



## WHY WE NEED A NEW WASTE MANAGEMENT AND RESOURCE RECOVERY STRATEGY

This Strategy has been developed in response to the many drivers for change within the waste industry.

### These include:

- Waste policy and environmental protection regulation.
- Community expectations and priorities.
- State targets for diversion of waste from landfill and recycling.
- Dynamic commercial markets for recycled and recovered goods and materials.
- The need to be balanced against the affordability and sustainability of improved services.

Managing waste and recycling is a core Council service under the requirements of the New South Wales *Local Government Act (1993)*. The annual cost to Council of providing waste management services is considerable, and is recouped by applying fees and charges. Services must be efficient, cost-effective and focus on recovering and recycling valuable waste resources while conserving landfill space.

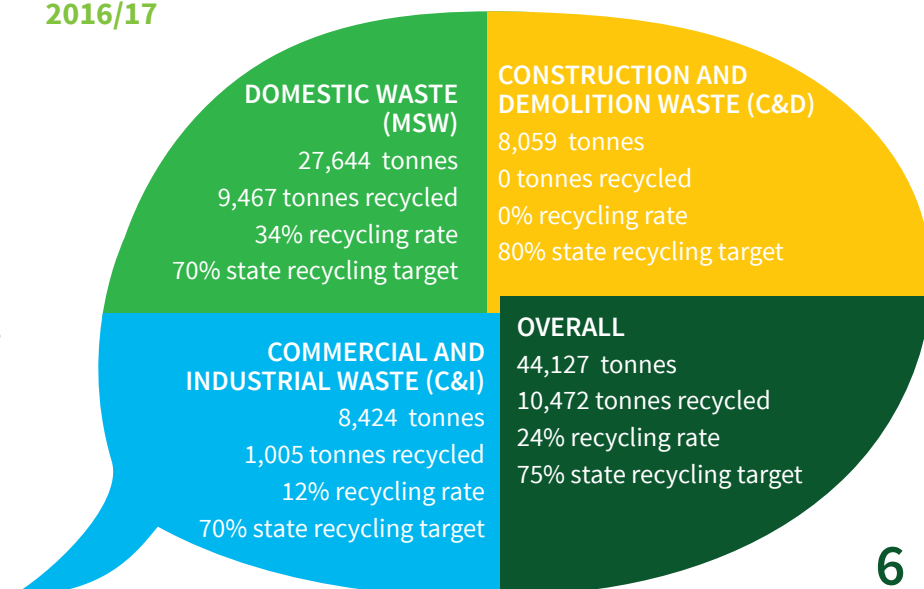
Under the principles of ecologically sustainable development we must take into account environmental and economic considerations in decision making processes. We cannot simply pursue least-cost options for waste management; we must look at the issues holistically.

The Bega Valley community has a growing awareness of environmental issues and an increasing appetite for knowledge about waste management. As such, Council worked with the community to develop this Strategy and we formed the Waste Strategy Working Group. Council is sincerely grateful and much indebted to the people who willingly gave up their time to provide invaluable input.

Emerging trends in waste management include consideration of the community benefits of managing and processing waste locally. The Strategy recognises the broad social, learning, skills-based and financial benefits of processing waste locally with greater involvement from the community rather than transporting waste to metropolitan centres for processing. This was a driving force behind developing this new Strategy.

Council has made substantial improvements to its waste services during the past 10 years and now needs to significantly increase diversion of waste from landfill. As waste generation increases, remaining landfills are filling faster than planned, and landfill space should be preserved for the long-term management of non-recyclable waste and managing waste from natural disasters. Our Local Government area has an overall recycling rate of only 24%, and our performance in recycling domestic waste and business waste falls well short of NSW's recycling targets.

### Waste received and recycled by waste type in the Bega Valley: 2016/17



## INTRODUCTION

This new Strategy will guide more diversion of waste from landfill and increase recycling within the Bega Valley. It has been developed during a period of substantial change within national and state waste policy and regulation which empowers Local Government more than ever to reduce the impact of waste upon the natural environment and make greater efforts to conserve resources within a productive economy.

Our new Strategy delivers the community's vision for the future as outlined in Council's Community Strategic Plan:

*Greater investment in innovative waste management technologies and processes, a focus on public litter, greater recycling and harnessing the benefits of local waste transformation.*

This Strategy contains seven principal themes delivering 19 strategic initiatives to work towards achieving the overall state target of 75% diversion of waste from landfill by 2021/22.



**75% diversion of waste  
from landfill by 2022**

## STRATEGIC INITIATIVES

Council has developed 19 strategic initiatives to deliver improved, sustainable services for the next 10 years.

These initiatives recognise the need to provide flexible services to support our thriving regional economy, particularly over peak holiday periods, and to investigate the potential of adding more value to waste locally through local processing, recycling and importantly more local use of recycled materials.

Community support for improved separation of waste at home and work is paramount for our Strategy to be effective, and an ongoing community waste awareness and education program will underpin its delivery.

**In summary, the new Strategy will:**

- Deliver a combined Food Organics Garden Organics (FOGO) service to replace the existing garden organics service.
- Build new processing facilities at key locations within Council's facility network to recycle clean soils, concrete and, brick and tiles, and sort and recycle mixed building waste.
- Investigate construction of a new sorting facility (MRF) within a new Resource Recovery Park for household and business waste, including a facility for processing materials such as mattresses and e-waste.
- Increase sorting of domestic and light vehicle commercial waste at existing transfer stations.
- Further develop the popular Tip Shops.
- Review the suitability of Council's waste facility network to meet the waste management needs of the community into the future.
- Reduce single use plastics in our community, support product stewardship schemes and increase local use of recycled materials to support the "circular economy"
- Deliver ongoing community waste awareness and education to underpin the new Strategy.

**Council, as a leader and significant local consumer of goods and services, will:**

- Incorporate a recycled content criterion into its procurement processes and decision making where applicable.
- Phase out single use plastics from Council and community events.
- Look for opportunities to innovate through the use of reusable, recycled and recovered materials in Council's works and services where appropriate.
- Continue to implement improved waste minimisation and recycling practices throughout Council's administrative and operational activities.





## WASTE MANAGEMENT AND RECYCLING IN OUR REGION

Bega Valley Shire Council collaborates with other southern NSW Councils and the Australian Capital Territory via the Canberra Region Joint Organisation, who collectively develop programs to increase recycling and commercial return for recycled and recovered materials and lower waste processing for member Councils. This is an important network that helps Council provide affordable community waste services.

### Resource Recovery and Recycling Domestic Waste

Domestic waste is the greatest source of waste we receive (63%) and put into landfill each year (56%) and is a key focus area for improvement within this new Strategy. Each year we will aim to divert an extra 10,000 tonnes of domestic waste from landfill in our region, then increase this amount in response to forecast increases in population and increasing waste generation rates generally associated with rising living standards.

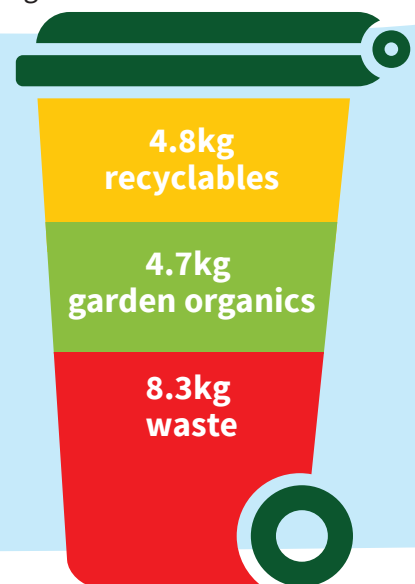
The average household in our region creates an estimated 30.6kg of total waste which is significantly more than the state average of 24.2kg. Each week, households in our region generate 4.8kg of recyclables, 4.7kg of garden organics and 8.3kg of residual waste collected at the kerbside (total 17.8 kg per week). Drop-off facilities at transfer stations and landfills collect the remaining 12.8 kg waste.

Currently 20% of the kerbside waste bin contains material that could be recovered through existing recycling services. This includes glass, cardboard, plastics, paper, metals and green waste. The main component of the garbage stream however is food waste (38%).

Non-recyclable waste makes up 15% of the contents of the kerbside recycling bin, lowering its commercial value. Green waste kerbside services have low rates of contamination of 1%.

In the Bega Valley we will contribute to the achievement of regional targets by delivering:

- A kerbside organics service that has expanded to include food waste (FOGO).
- Continued improvement of facilities at transfer stations to accept source separated household wastes for recycling.
- Service innovation, awareness and education to encourage greater separation of kerbside garbage, recycling and organics at home.



## Commercial Waste

Most of the region's commercial waste is taken directly to waste processing and landfill sites by commercial contractors, although Council does provide kerbside services to some small businesses. Overall, commercial waste recycling rates within our region are low, at 12%, compared to the state target of 70%.

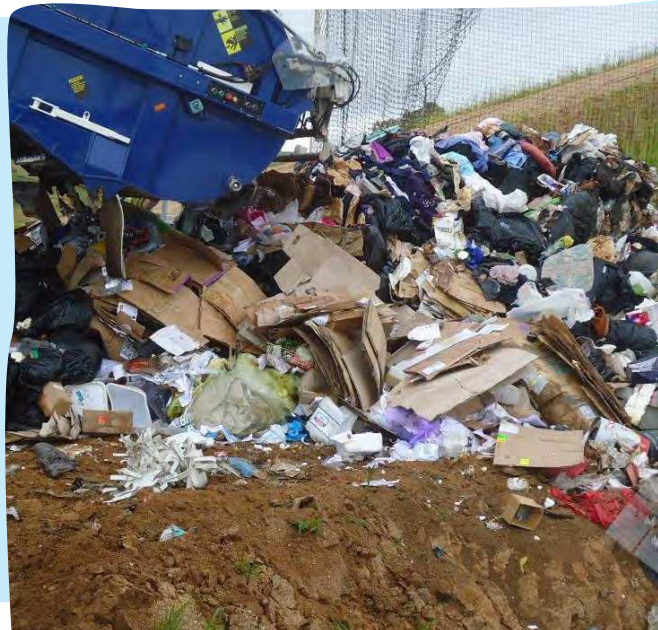
The average commercial premise generates 31kg of kerbside waste per week, ranging from 25kg in winter to 36.6kg in summer, with both general waste and recycling increasing equally during peak holiday periods.

The commercial kerbside garbage stream contains:

- 14% cardboard, paper, plastics, glass and metals which could have been separated for recycling.
- 49% organics
- 63% of what goes into red landfill bins from commercial sources is actually recyclable.

The kerbside recycling stream contains 16% non-recyclable materials which contaminates the recycling, lowering its commercial value.

Lack of economical, local recycling facilities for commercial waste is one of the key reasons for this waste stream largely being channelled to landfill. Council will seek to increase recycling of commercial waste up to 5,000 tonnes per year within the new Strategy to meet the state target of 70%.



The new Strategy will deliver:

- A kerbside organics service expanded to include food waste (FOGO) which will be gradually rolled out to the commercial sector.
- Investigation of options for local processing of dry commercial recycling to provide a price signal that favours local recycling over landfill disposal.
- Community waste awareness, education and opportunities that encourage greater separation of waste, recycling and organics from commercial sources.

## Construction and Demolition Waste

Construction and demolition waste includes soil, concrete, brick, tiles, timber, building materials, plastic and green waste. Council receives 8,000 tonnes/year of this waste stream and re-uses 17% at its waste sites for civil construction purposes. Council plans to meet the state target of 80% during the Strategy's term by separating 5,000 tonnes/year of construction and demolition waste into its recoverable and recyclable components.

Improved recovery and recycling of construction and demolition waste is relatively easy to achieve subject to providing facilities, plant and labour. It is proposed to develop the existing Eden waste depot as a construction waste sorting facility in the short/medium term with consideration given to developing a larger, centralised facility in the longer term.

The new Strategy will deliver:

- Sorting and recycling facilities for construction and demolition waste.
- Greater separation of building materials at transfer stations.
- Recycling of clean soils.

## Domestic Problem Wastes

A Community Recycling Centre is provided by Council at Merimbula to collect and recycle problem household wastes to remove them from the general domestic recycling stream. Items received at no charge to residents include gas bottles, fire extinguishers, paint, fluorescent globes and tubes, car batteries, household batteries, oils and smoke detectors.

Council also manages a number of 'problem wastes' not covered by the Centre. These may be domestic or commercial in origin, and present challenges for landfill diversion and recycling often because of their processing cost. These include 117 tonnes/year of electronic waste and over 2,000 innerspring mattresses and bases. The new Strategy will review local options to dismantle these waste streams, providing local enterprise with greater opportunity to participate in the sector.

## Threats to Recycling

Threats to recycling exist and markets for many materials are fickle, prices are variable and transport costs to materials recovery/recycling facilities can exceed materials prices on offer, particularly glass, paper and mixed plastics. Glass is a heavy component of recycling and makes up around 35% of the kerbside recycling stream. Local processing of glass into sand substitutes for use in engineering applications is well worth considering.

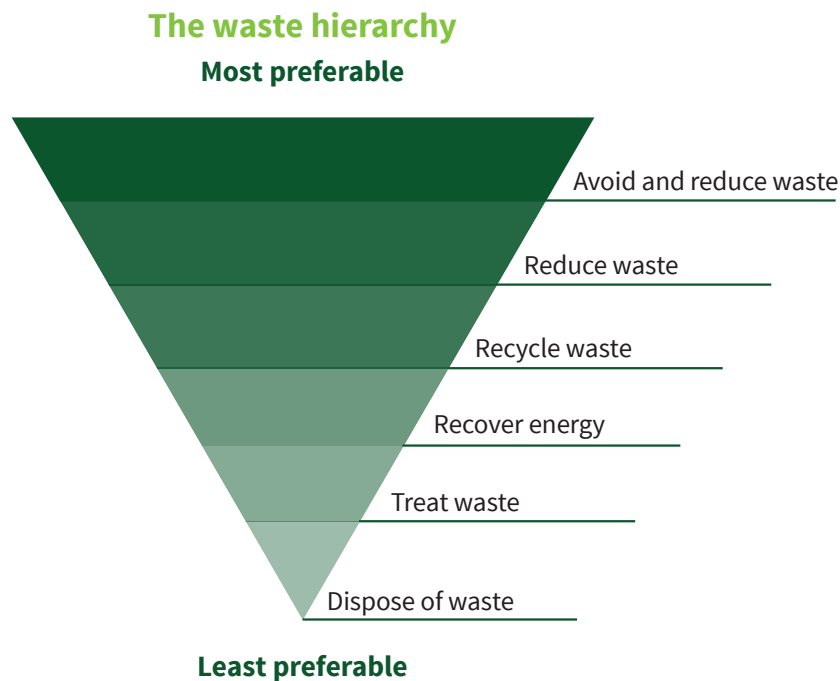
The 2018 import ban placed on foreign waste by the Chinese government has highlighted the need to develop a circular economy in Australia. However, lack of a common, clear vision between the Commonwealth and States, and diverse State Government policies, are claimed by industry to have hampered investment and employment required to develop a circular economy. Australia alone sent 1.25 million tonnes of recycling to China in 2016/17 which is now impacted by current import restrictions.

The circular economy assists in providing resilience in the sector and provides greater local economic opportunity. Council's role is to help create conditions where new markets become available for materials arising from our recycling processes. This strategy is designed through its proposed actions to help achieve this goal.



## NSW Waste Strategy

The waste hierarchy provides guidance on the preferred order of approaches to conserve valuable resources. It does this by focusing our attention and efforts on programs which are expected to produce greater efficiencies in returning waste resources back to the economy.



The *NSW Waste Avoidance and Resource Recovery Strategy (WARR) 2014-2021* provides clear direction and state targets for reducing waste and increasing recycling by 2021/22. Local Government is expected to contribute greatly to meeting these targets which means waste management strategies and actions need to be broadly consistent with the NSW Government targets.

The WARR Strategy encompasses a number of objectives and targets:

- **Avoid and reduce waste generation** - by 2021-22, reduce the rate of waste generation per capita.
- **Increase recycling** by 2021-22, increase recycling rates for:
  - municipal solid waste (MSW) to 70%
  - commercial and industrial waste (C&I) to 70%
  - construction and demolition waste (C&D) to 80%.
- **Divert more waste from landfill** - by 2021-22, increase waste diverted from landfill to 75%.
- **Improve problem waste management** - by 2021-22, establish or upgrade 86 CRCs for managing problem household wastes.
- **Reduce litter** - meet interim and continued litter number targets.
- **Reduce illegal dumping** - implement the NSW Illegal Dumping Strategy.

## Waste Management and Resource Recovery Policy

Council operates and controls waste management activities within a framework of Commonwealth, State and Local Government policy and legislation. Legislative and regulatory instruments significantly influence future strategic waste management directions for Council. While most of the responsibility for waste management services sits with Local Government, the NSW Government sets state recycling performance targets, and the Commonwealth Government takes on some national policy issues including control of product stewardship schemes such as e-waste.

Some of the more important policy and regulation that has shaped this Strategy has been delivered by the NSW Environment Protection Authority which, amongst other responsibilities, seeks to both improve recycling rates and environmental performance of waste management facilities. It does this through a number of Acts, Regulations, Strategies, Guidelines and Funding Grants for improvement programs.

### National Policy Settings

National Waste Policy is embodied within the Commonwealth's *Less Waste, More Resources* strategy. Within the 2010 Implementation Plan, all levels of government are implicated with various levels of responsibility for action. Specifically within Strategy 7 of the National Plan, Local Government is responsible for supporting a reduction in the amount of biodegradable material sent to landfill.

A number of influences within the waste management industry are driving greater landfill diversion and resource recovery trends in NSW. The broad objectives are to increase conservation of resources and improve environment protection. The *Less Waste, More Resources* strategy is based on two main themes:

- Maximising source separation of dry recyclable materials so that these don't enter the residual waste stream in the first place.
- Reducing the amount of biodegradable waste going direct to landfill without some form of treatment.

These drivers and strategic themes will shape the way waste is managed in Australia over the next 10 to 20 years.

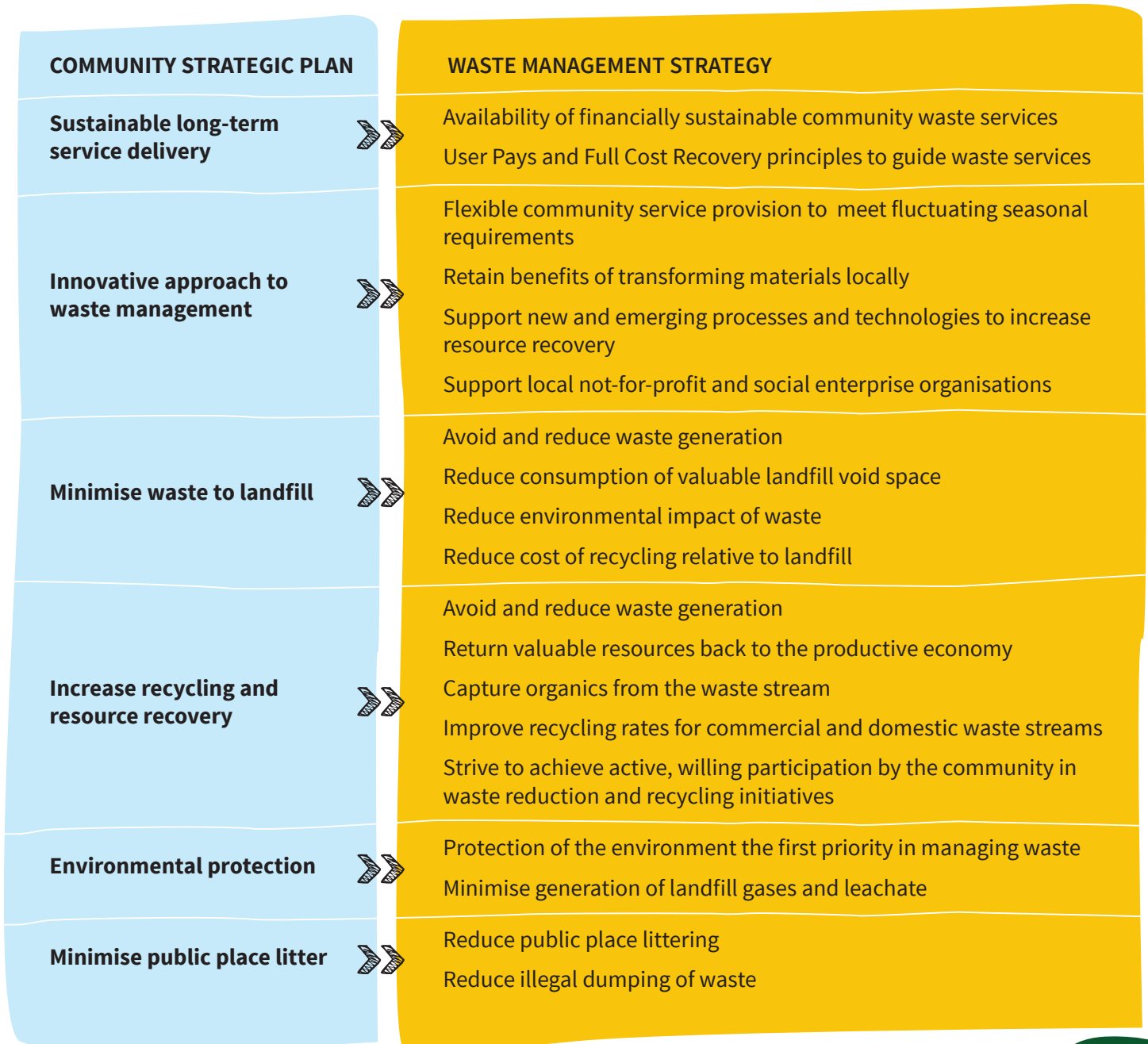


## STRATEGIC WASTE MANAGEMENT PLANNING OBJECTIVES

Council’s general objectives for the environment, sustainability and waste were developed from extensive community consultation during preparation of our Community Strategic Plan 2040. This consultation included community surveys which underpin the report Understanding our Place and helped Council identify and understand what people love and value about the Bega Valley Shire now and into the future.

Council’s Waste Strategy Working Group developed the general objectives further in 2017 and put together a list of specific waste initiatives linking with the broader Community Strategic Plan (outlined in Section 7).

### Links between Community Strategic Plan and Waste Strategy



## NEW WASTE MANAGEMENT AND RESOURCE RECOVERY STRATEGY

### Themes and initiatives

#### Theme 1. Avoid and reduce waste generation

- 1A. Guide the community in reducing food waste
- 1B. Promote reuse of discarded products and materials
- 1C. Support reduction in single-use plastics

#### Theme 2. Increase recycling

- 2A. Introduce a food and garden organics kerbside service
- 2B. Change kerbside bin collection frequencies
- 2C. Reduce Commercial Waste
- 2D. Sort and recycle construction and demolition waste
- 2E. Develop a centralised Resource Recovery Park
- 2F. Deliver a community waste awareness and education program
- 2G. Increase recycling opportunities at transfer stations

#### Theme 3. Divert more waste from landfill

- 3A. Investigate innovative, reuse options for bulky wastes

#### Theme 4. Manage problem wastes better

- 4A. Provide more Community Recycling Centres

#### Theme 5. Reduce litter

- 5A. Support the NSW Container Deposit Scheme

#### Theme 6. Reduce illegal dumping

- 6A. Support the Canberra Joint Organisation's illegal waste dumping program

#### Theme 7. Review and develop operations

- 7A. Investigate construction of a local, co-mingled recycling materials recovery facility
- 7B. Develop the waste sites network and capital works program
- 7C. Review operational services
- 7D. Develop financial model to underpin new Strategy
- 7E. Develop policy to support new Strategy

**Theme 1.  
Avoid and  
reduce waste  
generation**

**INITIATIVE 1A. GUIDE THE COMMUNITY IN REDUCING FOOD WASTE**

Council will actively support programs in our region to deliver programs such as Love Food, Hate Waste, and other programs such as OzHarvest designed to reduce food being thrown away by the community or businesses.

**Waste streams targeted:** Food waste within domestic and commercial waste streams.

**INITIATIVE 1B. PROMOTE REUSE OF DISCARDED PRODUCTS AND MATERIALS**

Council will review options for further development and expansion of Tip Shops, including the potential of engaging a social enterprise group to establish a principal Tip Shop at a former, re-purposed waste site.

Council will support local initiatives to on-sell used materials rather than deliver them to waste facilities. For example, Garage Sale Trail, Buy-Swap and Sell and the Bega Valley Waste App are all platforms that can be further developed to encourage a re-use culture. Groups such as Mens' Sheds and the Funhouse Remakery help promote a repair culture and reduce social isolation, and Council will explore ways to support these activities.

**Waste streams targeted:** Useful, reusable items disposed within the domestic waste stream.

**INITIATIVE 1C. SUPPORT REDUCTION IN SINGLE-USE PLASTICS**

In June 2018, Bega Valley Shire Council unanimously agreed to phase out single use plastics at all Council venues and events. Over the next 12 months Council will establish event guidelines that remove single use plastic cutlery, crockery and other unnecessarily wasteful products from events for which Council is organiser, or Council provides material support for through the Community Grants or Waste Grants Programme.

**Waste streams targeted:** Single-use plastics.





Theme 2.  
Increase  
recycling

**Description:** Increased recycling and resource recovery reduces the amount of waste being landfilled and conserves valuable resources. Investment in local recycling infrastructure and services offers the potential to reduce long distance transport costs, creates local economic opportunities and enables a cost effective local solution for commercial recycling which is currently unavailable.

**COMMUNITY STRATEGIC PLAN**

**Increase recycling and resource recovery**



**WASTE MANAGEMENT STRATEGY**

Improve recycling rates

Strive to achieve active and willing participation by community in waste and recycling initiatives.

**State Target:** By 2028, aim to increase recycling rates closer to EPA aspirational targets:

- Municipal solid waste, 70%
- Commercial and industrial waste, 70%
- Construction and demolition waste, 80%

**INITIATIVE 2A. INTRODUCE A KERBSIDE FOGO SERVICE**

The strategic benefits of diverting organic waste from landfill are significant and include:

- Preserve valuable landfill void space.
- Reduce generation of methane, a potent greenhouse gas, from landfill.
- Return valuable organic carbon to the soil via compost produced.

The FOGO (Food Organics Garden Organics) initiative replaces the four-weekly garden organics (green bin) kerbside service with a weekly service. Collected kerbside FOGO will be composted at the Merimbula facility initially with consideration given to co-locating with other resource recovery activities at a dedicated facility in the longer term.

Council will first concentrate on delivering a kerbside FOGO service to households, ensuring processing and product quality is achieved. Council will then work with the commercial sector to establish appropriate pre-treatment and collection services, and improved source separation.

**Waste streams targeted:** Food waste from domestic and commercial waste streams.



## INITIATIVE 2B. CHANGE KERBSIDE BIN COLLECTION FREQUENCIES

Council will change the collection frequency of kerbside bin services as part of its strategy to drive improved recycling rates and reduce waste to landfill. Specifically, Council will increase the total number of kerbside collections from 7 to 8 for each four week period by:

- Providing a weekly FOGO service.
- Changing the collection frequency of the landfill (red bin) from weekly to fortnightly.
- Retaining the co-mingled recyclables (yellow bin) collection as fortnightly.

Changing the collection frequency of the new FOGO service to weekly will provide significantly greater kerbside capacity for food and green waste. Reducing collection of landfill (red bin) waste to fortnightly will also encourage improved separation of food organics into the FOGO bin.

In delivering this Initiative, Council will also support other changes to kerbside services including:

- Providing extra bins for FOGO and/or co-mingled recycling for households requiring additional capacity.
- Providing variable sizing of bins for domestic and commercial recycling (yellow) and landfill (red) to reward lower landfill generation and accommodate the needs of larger families and/or holiday accommodation.

An extensive Community Waste Awareness and Education program will support this Initiative.

Council will also consider tailoring components of the kerbside collection service to better suit the community's needs. For example, Council may consider higher FOGO collection frequencies for businesses and smaller/split waste stream vehicles to service isolated areas.

**Waste streams targeted:** Food waste and co-mingled recyclables within households and businesses.



## INITIATIVE 2C. REDUCE COMMERCIAL WASTE

Reducing the significant organic component of landfilled waste from commercial sources including restaurants, supermarkets, cafés and clubs is a high priority; however the standard kerbside FOGO service is unlikely to be suitable for many businesses. Council will engage directly with business to identify services that are suitable to meet the differing needs of commercial waste generators.

Council will review its waste fees and charges and revenue policy with a view to encouraging greater separation of commercial waste before disposal.

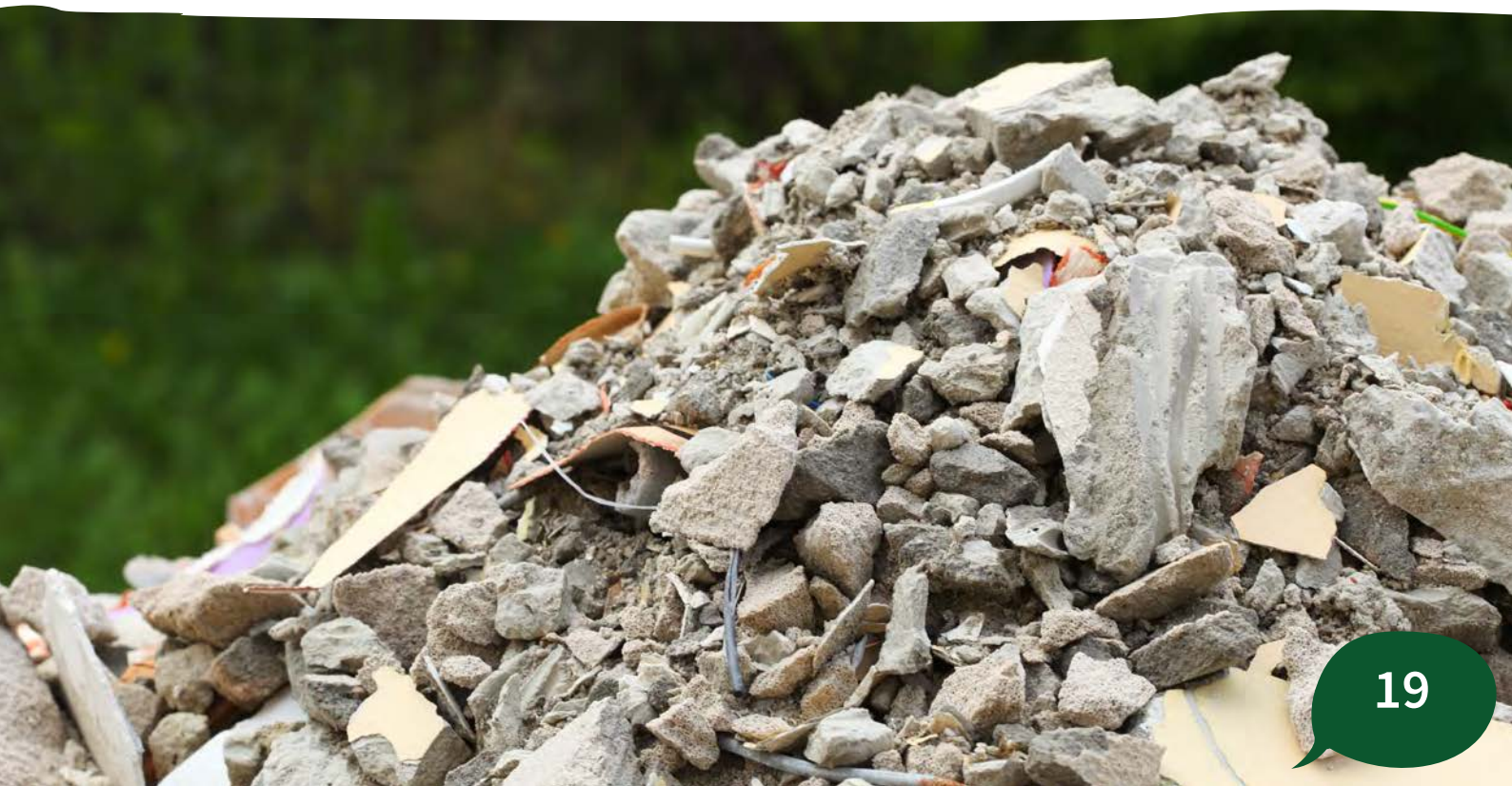
**Waste streams targeted:** Commercial kerbside waste streams and food industry businesses serviced by commercial contractors.

## INITIATIVE 2D. SORT AND RECYCLE CONSTRUCTION AND DEMOLITION WASTE

Council proposes to develop the Eden waste facility as a construction and demolition waste recovery facility, with the remaining landfill space at the site to be utilised for residual material that's not viable to recover from the sorting process. It is proposed to relocate construction and demolition waste processing to a centralised site in the longer term.

This initiative will be supported by a new Fees and Charges Policy encouraging greater diversion of waste from landfill as well as separation of construction and demolition waste for recycling.

**Waste streams targeted:** Sorted and mixed construction and demolition waste.



## INITIATIVE 2E. DEVELOP A CENTRALISED RESOURCE RECOVERY FACILITY

Council will review options for increased recycling and resource recovery processes and technologies at a local, multi-purpose, centralised Resource Recovery Facility. A thoroughly planned, designed and purpose-built, centralised facility allows greater sharing of human and plant resources, as well as reducing the significant costs of infrastructure overheads at multiple sites.

Council will evaluate the following within this concept:

- Composting organics from self-haul and kerbside collections.
- Sorting dry commercial waste.
- Sorting and processing construction and demolition waste.
- Soil recovery, treatment and recycling.
- Biosolids recycling.
- Processing regional problem wastes (such as mattresses).
- Processing electronic waste.
- Processing co-mingled recycling.
- Developing a domestic transfer station to service the central part of the shire including Bega, Candelo, Wolumla and surrounding districts.
- Developing a centralised Tip Shop.



## INITIATIVE 2F. DELIVER A COMMUNITY WASTE AWARENESS AND EDUCATION PROGRAM

This program will build awareness among domestic and business communities of local waste and recycling issues and initiatives, and encourage maximum source separation of waste streams. It will deliver balanced elements of awareness, encouragement and compliance.

The program will focus on the local opportunities, including the many facets of long-term sustainability. It will deliver awareness in a manner which is 'fun about a serious subject' and be built on an 'I'm responsible for producing my own waste' theme.

The beneficial outcomes and consequences of this new Strategy will underpin the Community Waste Awareness and Education Program. The overall message will convey that the new Strategy has been developed to ensure the Bega Valley community is willing and able to tackle the difficult issues and lead the way with long-term, sustainable waste management.

A range of media platforms are proposed including print, radio, Facebook and the free Bega Waste APP. The community will be well informed about the reasons and the benefits associated with strategic Initiatives. The program will be developed with recognition of established strategic links with the CRJO and neighbouring LGAs such as Eurobodalla, Snowy Monaro and East Gippsland.

Specific actions will identify and encourage the uptake of changed behaviours by all sections of the community, led by self-appointed 'Waste Warriors' who are encouraged and supported by Council, businesses and residents.

Specific actions will be structured to encourage community feedback with interactive components available to enable Council to continually engage with the community. For example, presenting individual stories and continually updating recycling and waste diversion information to affirm success of the community's actions.

The program will target specific sections of the community, including:

**Commercial/Business Sector:** Council will invite businesses to be involved in long-term waste management through initiatives outlined in the new Strategy. Council will ensure businesses are aware of how the new Strategy impacts on them including:

- Waste management services with a clearer and more sustainable user-pays system that favours recycling over landfill.
- Changes to Council's waste disposal fees and charges policy.
- Changes to drop-off locations for specific waste types.
- Support for source-separated recycling initiatives.
- Changes to other policy such as use of public place bins within proximity to businesses outlets.
- Planned waste audits and compliance measures.

Council will encourage a branded merit system for businesses demonstrating improved recycling behaviours including approved public-facing branding such as 'Waste Champions' OR 'Waste Warriors'.

**Schools:** Council will continue its work with local schools to promote the objectives of the new Strategy, focussing on:

- Working with the Bournda Environmental Education Centre to deliver in-school waste education in government schools.
- Supplying in-kind recycling services to schools linked with delivery of targeted in-school waste education programmes.
- Supply and support services for school-based organics management (worm farming/composting of food wastes).

**Kerbside Services:** Council will develop clear branding of kerbside services as a principal component of encouraging behaviour change. Industry euphemisms and acronyms will be removed from all written and verbal communications to drive greater community awareness of the fate of each kerbside bins' contents:

- The residual waste bin will be branded as the Landfill (Red) Bin.
- The co-mingled recycling bin will be branded as the Recycling (Yellow) Bin.
- The organics bin will be branded as the Compost (green) Bin. As we introduce FOGO we will also refer to it as the FOGO bin.
- Composted organics will also be branded to support identification, ownership and uptake of the product. Value-added initiatives such as bagging and marketing compost through Tulgeen Disability Services for small home and holiday accommodation customers will widen the target market and increase commercial returns.

To support community education Council will:

- Develop a broader, more encompassing event management policy applicable across all of its service areas to standardise requirements for waste management in public places and at events. Policy will include bin requirements and the strict use of re-usable or compostable crockery and cutlery at all events that Council supports. Single use plastics will not be permitted.
- Review the strategic location and branding of public place bins. Public bins in areas more frequented by tourists will be increased and will include targeted branding that promotes the shire's Waste Less, Reuse and Recycle More policy.
- Introduce the Council Green Team at events to stand near bin banks and encourage correct use of waste, recycling and organics bins.
- Include Council's Tourism Sub-committee, Tourist Information and other service units (such as Parks and Gardens) in initiatives and actions to increase recycling and diversion of waste from landfill.

**Waste streams targeted:** Commercial, domestic and waste from community events.



## INITIATIVE 2G. INCREASE RECYCLING OPPORTUNITIES AT TRANSFER STATIONS

Council will provide facilities to encourage greater separation of cardboard, engineered timber products (chipboard and medium density fibreboard), wood (untreated), concrete, plasterboard and rock/soil delivered to waste sites. These separated waste streams will be recycled or re-used through the Tip Shops. Council will review options for circular site design at larger, more frequented transfer station sites, making drop-off of separated waste streams as accessible to the community as possible.

**Waste streams targeted:** Domestic waste.



**Theme 3.  
Divert more  
waste from  
landfill**

**Description:** A number of significant waste streams (e.g. engineered timber products) received by Council have no available recycling opportunities, although options other than landfill may exist in the future. Within this Initiative Council will investigate sustainable, affordable options for supply of refuse derived fuels for the ‘waste to energy’ market, recognising that energy recovery is lower in the waste hierarchy and therefore must not be considered a substitute for genuine recycling of resources.



**State Target:** By 2021–22, increase the waste diverted from landfill from 63% (in 2010–11) to 75%.

**INITIATIVE 3A. INVESTIGATE INNOVATIVE REUSE OPTIONS FOR BULKY WASTES**

Council will investigate recycling options for the following:

- Recovered fines may be reused in landscaping and construction purposes, whilst soil generally may be improved with blended organics.
- Mattresses pose issues of consuming a large space in landfill and cannot be compacted properly, often rising up through the waste profile. Options exist to break mattresses down into fabric layers for carpet underlay and padding in gym equipment. Recycling is an option for the metal springs.
- On-site bio-degradation of scrap engineered timber waste will be investigated by Council, using aged, degraded material for approved on-site rehabilitation.
- Commercial food packaging waste including woven plastics has slowly expanding recycling opportunities.
- Tyre recycling on-site at a centralised facility would remove the current transport expense of processing off-site.

**Waste streams targeted:** Domestic, commercial and construction and demolition.



**Theme 4.  
Manage  
problem wastes  
better**

Some household products and materials have potential to harm human health and the environment and can also make the recovery and recycling of other materials more difficult or uneconomic. This theme aims to reduce the impact of these household materials by separating them from household waste and recycling streams.

Community Recycling Centres aggregate and store household problem wastes delivered to site, effectively removing them from the kerbside domestic recycling stream. Waste streams collected include paint, batteries, smoke detectors, fluorescent lamps, gas bottles, motor oils and fluids and other toxic and hazardous household products, some of which can be recycled.

Council will:

- Provide more centres or mobile trailers to collect and recycle these waste streams from other sites.
- Continue to seek recycling opportunities for electronic waste within the Television and Computer Recycling Scheme.
- Continue to provide services including ChemClear (agricultural and veterinary chemicals), drumMUSTER (their plastic packaging containers) and the Household Chemical CleanOut program.
- Investigate innovative solutions for farm waste, in particular recycling of silage wrap.



**State Target:** By 2021–22, establish or upgrade 86 drop-off facilities or services for managing household problem wastes state-wide.

**INITIATIVE 4A. PROVIDE MORE COMMUNITY RECYCLING CENTRES**

Council has a CRC at Merimbula and will seek to provide a similar facility at Bermagui and Eden.

**Waste streams targeted:** Domestic.

**Theme 5.  
Reduce  
litter**

The State government’s litter reduction target is to reduce the volume of litter by 40% by 2020. Litter is a problem in the Bega Valley and Council will continue to support measures to reduce litter. Council will continue to advocate for changes to packaging requirements under the Commonwealth Product Stewardship Act to minimise the impact packaging has on the environment. Continued education and enforcement campaigns will be conducted through Council’s Ranger Services team.



**State Target:** By 2016/17, reduce the number of litter items by 40% compared with 2011/12 levels and then continue to reduce litter items to 2021/22.

**INITIATIVE 5A. SUPPORT THE NSW CONTAINER DEPOSIT SCHEME**

Council will take a leadership role in the broader Joint Organisation region, ensuring refund entitlements from eligible container packaging delivered to sorting facilities from kerbside recycling collections are rightfully refunded to Council to offset service delivery costs.

**Waste streams targeted:** Domestic and commercial.



Theme 6.  
Reduce  
illegal dumping

Illegal dumping of waste threatens the environment and undermines the reputation the region has for its pristine natural environment. There is no excuse for illegal dumping. Council will continue to deter and prosecute illegal dumpers through education and enforcement campaigns.

**COMMUNITY STRATEGIC PLAN**

**Environmental protection**



**WASTE MANAGEMENT STRATEGY**

Protection of the environment as a key priority in providing waste management services

Reduce public place littering

**State Target:** Implement the NSW Illegal Dumping Strategy 2014-2016 to reduce the incidence of illegal dumping state-wide, and establish baseline data to allow target-setting in other parts of the state.

**INITIATIVE 6A. SUPPORT CBRJO'S ILLEGAL WASTE DUMPING PROGRAM**

Council will support development and implementation of the Joint Organisation's Illegal Waste Dumping program. An integrated, regional approach will also raise the profile of illegal dumping and the impacts it has on amenity and the environment.

**Waste streams targeted:** Domestic, commercial and construction and demolition.



**Theme 7.  
Review and  
develop  
operations**

Council will review the suitability of the existing network of waste facilities to meet waste management needs of the Shire into the future. Consideration will be given to the operational costs and remaining useful asset life of each site within Council’s waste network, as well as their assessed environmental impact and ongoing capital works requirements. Alternative uses for sites will be investigated, including development of a new transfer station for Bega residents and more centralised waste processing.



Council will undertake strategic projects including:

- Investigate construction of a local dry packaging and commercial waste recycling facility.
- There are strategic opportunities for Council to achieve a greater return on investment in local waste processing and services. The community incurs significant transport cost and receives minimal return in the form of local business and employment opportunities when waste for processing is transported out of the region.
- Review the waste site network and develop the capital works program.
- Smaller, less utilised transfer stations are expensive to maintain and are a heavily-subsidised service. Council will review investing greater operating and capital funds into developing larger and busier sites to both minimise their environmental impact and increase recycling, resource recovery and diversion of waste from landfill.
- Review its operational services to increase efficiencies.
- Develop policy to support the new waste Strategy.
- Council will develop more extensive purchasing policies for goods derived from recycled materials or which have recycled content, and which have ongoing rather than single use. Council will also re-structure its Fees and Charges to provide greater incentive for the community to separate its waste as well as change the use of some of sites to develop more centralised, recycling and resource recovery services.



**choose  
the right  
bin**

Accompanying this summary is a more detailed,  
technical document. For further information  
please phone Council on 6499 2222.



PO Box 492 Bega NSW 2550  
**E:** [council@begavalley.nsw.gov.au](mailto:council@begavalley.nsw.gov.au)  
**W:** [www.begavalley.nsw.gov.au](http://www.begavalley.nsw.gov.au)