

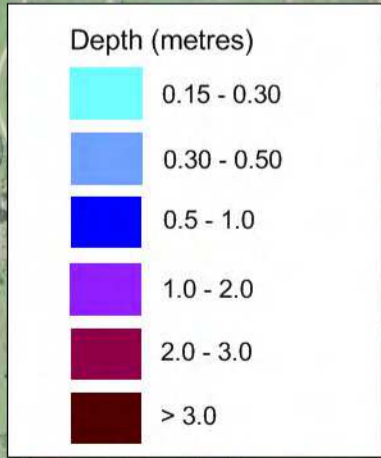
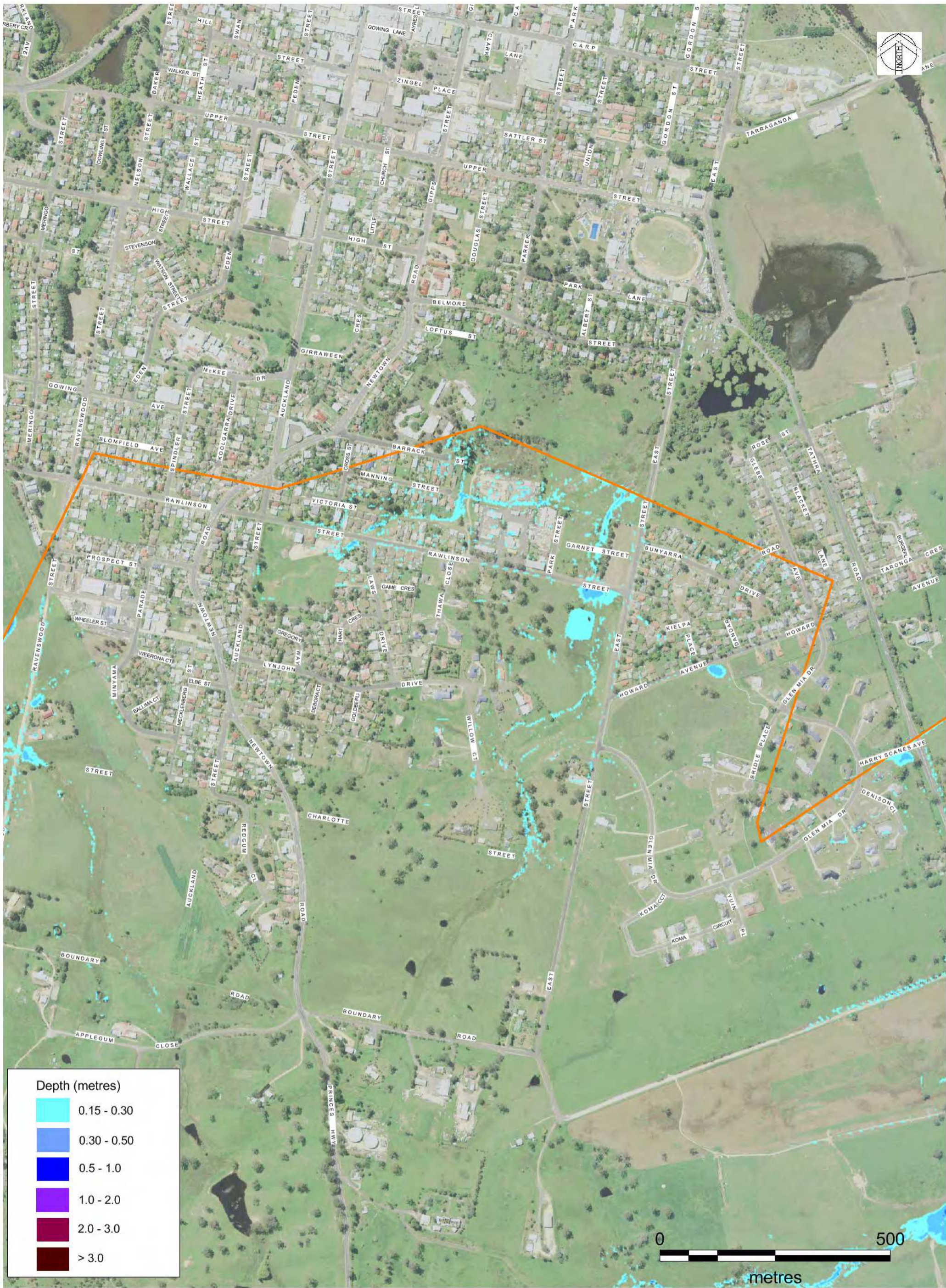
DATE PLOTTED: 25/01/2017 BY: Luke Evans  
 FILE: N:\Projects\599\FY16\044\_Bega & Brogo Rivers FRMS&P\Drawings\Workspace\Figures



© Cardno Limited All Rights Reserved.  
 This document is produced by Cardno Limited solely for the benefit of and use by the client in accordance with the terms of the retainer. Cardno Limited does not and shall not assume any responsibility or liability whatsoever to any third party arising out of any use or reliance by third party on the content of this document.

Date  
 17/5/2017  
 Size  
 A3

BEGA VALLEY SHIRE COUNCIL  
 BEGA AND BROGO FRMS&P  
 FIGURE 5-10 RAVENSWOOD ST - CHARLOTTE ST BEGA TRIBUTARY  
 LOCAL OVERLAND FLOWS  
 1% AEP PEAK DEPTH



DATE PLOTTED: 25/01/2017 BY: Luke Evans  
 FILE: N:\Projects\5599\FY16\044\_Bega & Brogo Rivers FRMS&P\Drawings\Workspace\Figures

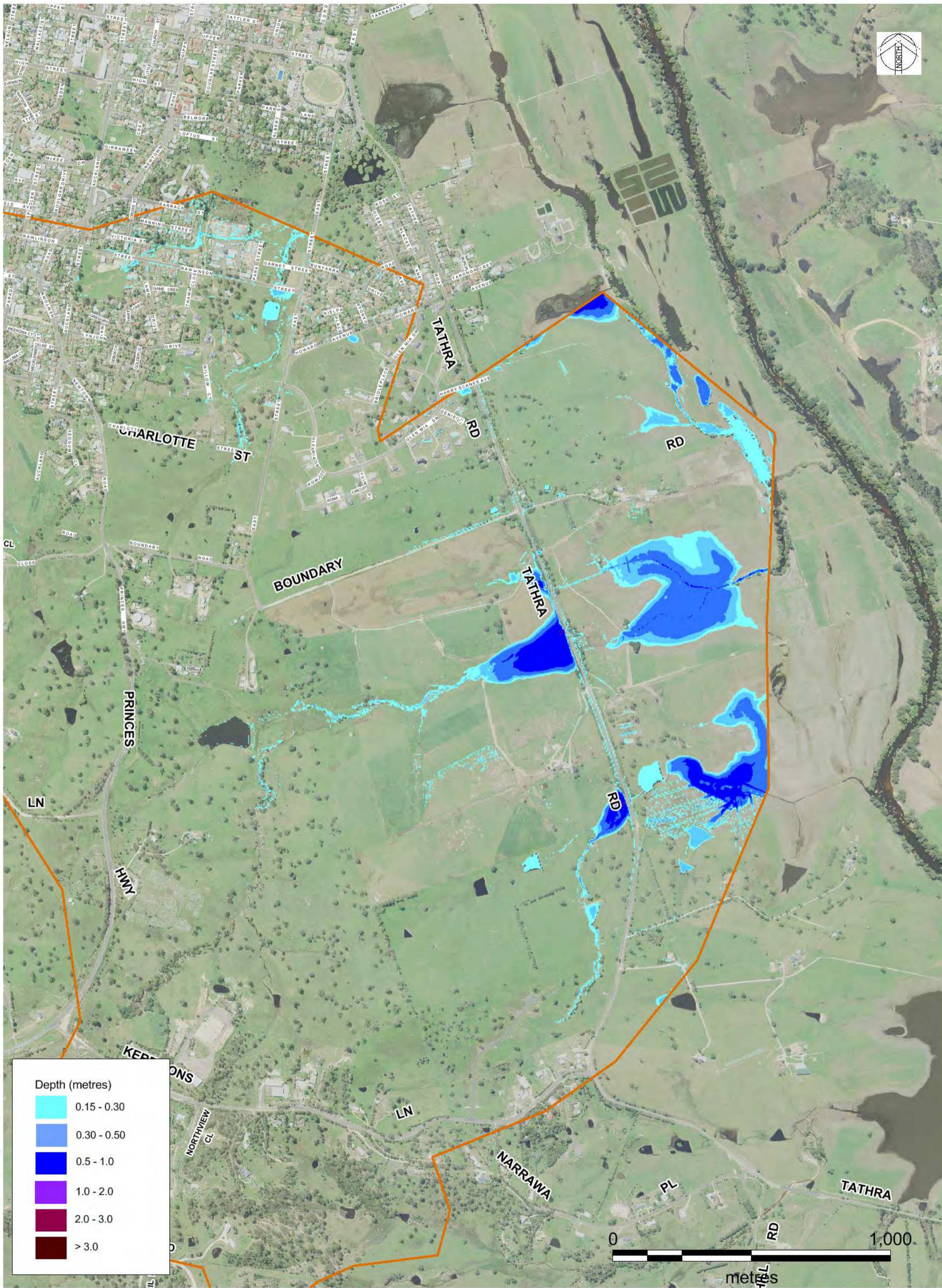


© Cardno Limited All Rights Reserved.  
 This document is produced by Cardno Limited solely for the benefit of and use by the client in accordance with the terms of the retainer. Cardno Limited does not and shall not assume any responsibility or liability whatsoever to any third party arising out of any use or reliance by third party on the content of this document.

Date  
17/5/2017  
 Size  
A3

**BEGA VALLEY SHIRE COUNCIL  
 BEGA AND BROGO FRMS&P**

**FIGURE 5-11 RAWLINSON ST - EAST ST BEGA TRIBUTARY  
 LOCAL OVERLAND FLOWS  
 1% AEP PEAK FLOOD DEPTHS**



DATE PLOTTED: 25/01/2017 BY: Luke Evans  
 FILE: N:\Projects\599\FY16\044\_Bega & Brogo Rivers FRMS&P\Drawings\Workspace\Figures

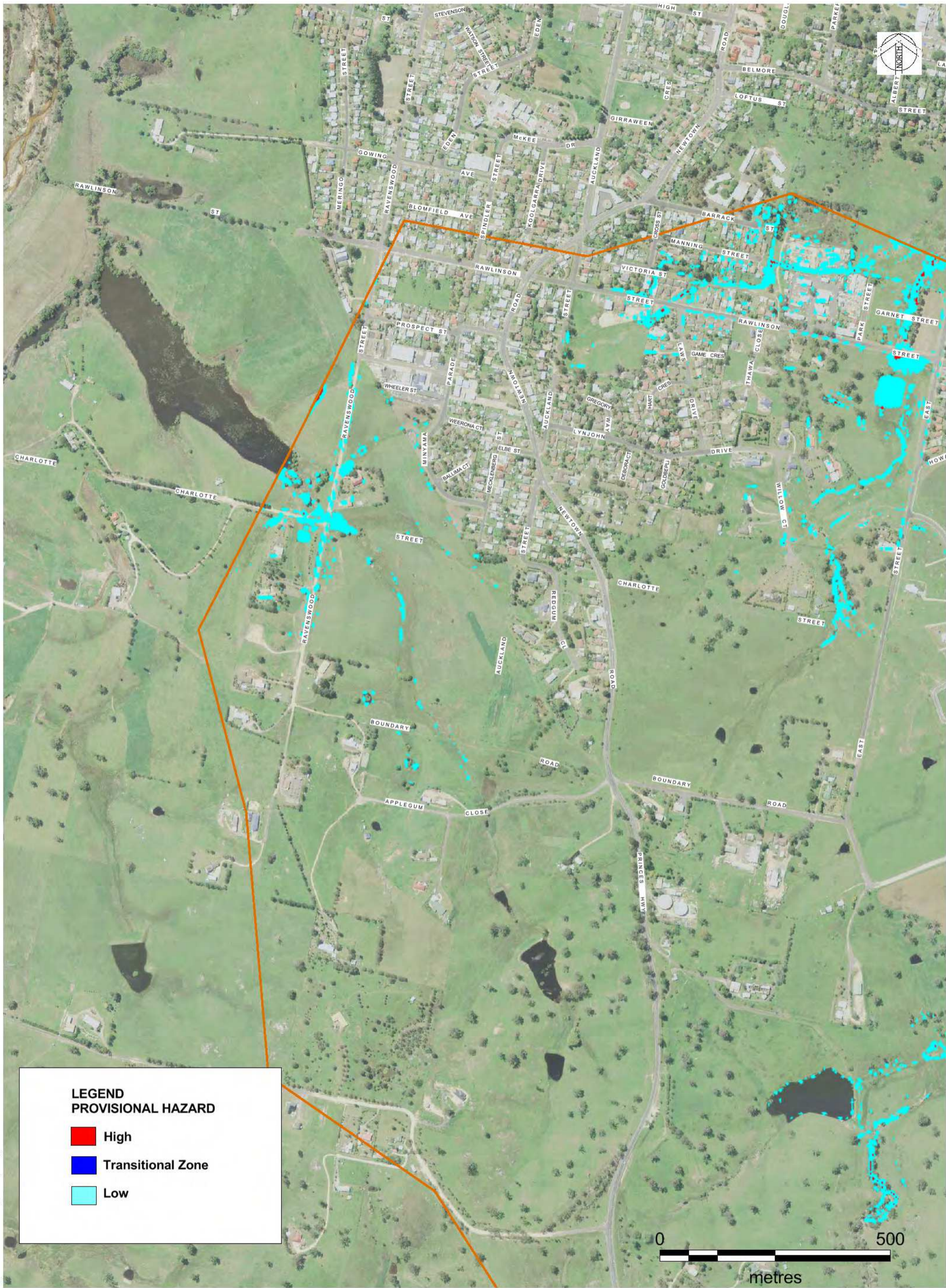


© Cardno Limited All Rights Reserved.  
 This document is produced by Cardno Limited solely for the benefit of and use by the client in accordance with the terms of the retainer. Cardno Limited does not and shall not assume any responsibility or liability whatsoever to any third party arising out of any use or reliance by third party on the content of this document.

Date  
17/5/2017  
 Size  
A3

**BEGA VALLEY SHIRE COUNCIL  
 BEGA AND BROGO FRMS&P**

**FIGURE 5-12 BOUNDARY RD- KERRISONS LANE BEGA TRIBUTARY  
 LOCAL OVERLAND FLOWS  
 1% AEP PEAK DEPTH**



**LEGEND**  
**PROVISIONAL HAZARD**

- High
- Transitional Zone
- Low

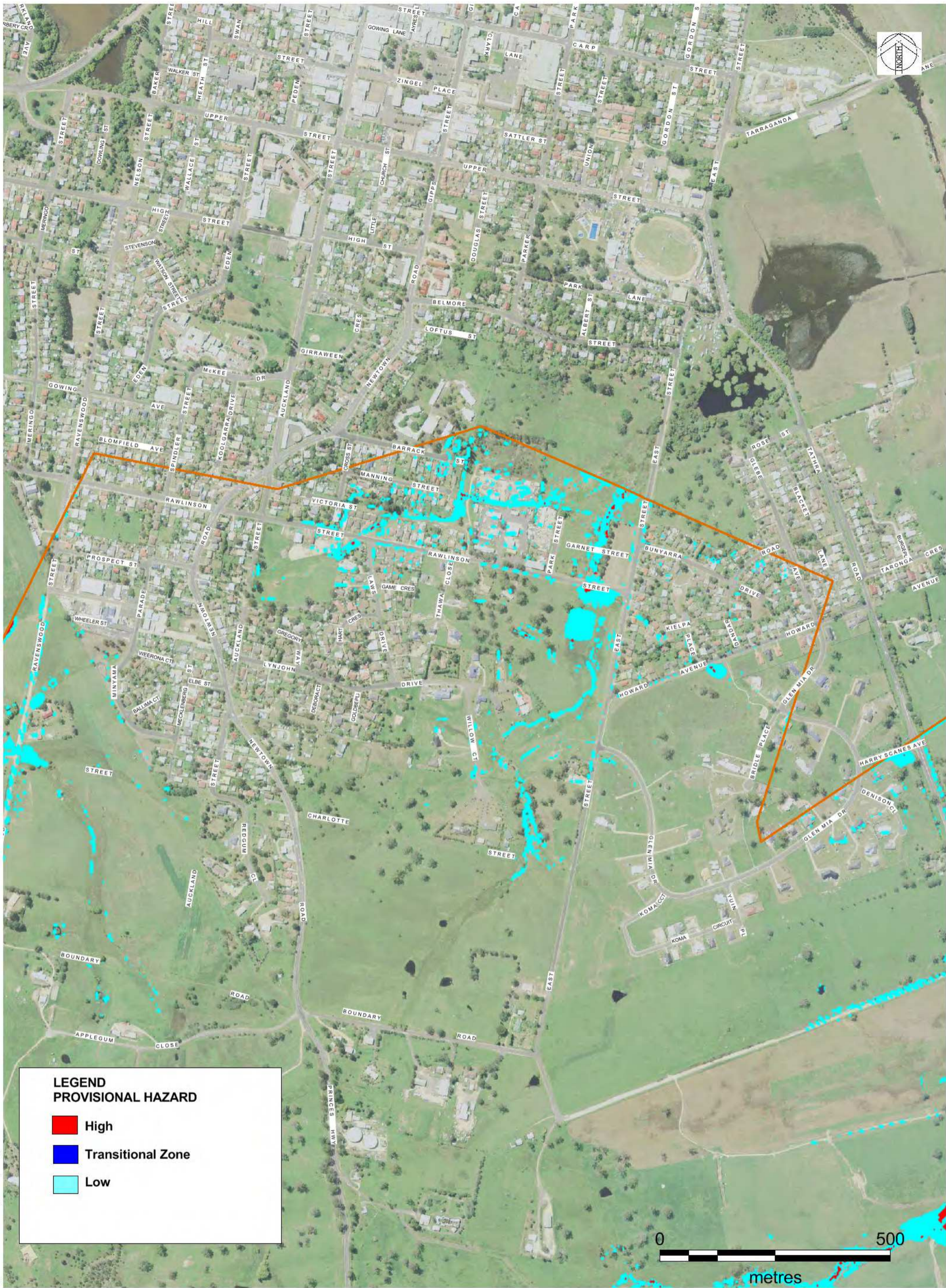
DATE PLOTTED: 25/01/2017 BY: Luke Evans  
FILE: N:\Projects\599\FY16\044\_Bega & Brogo Rivers FRMS&P\Drawings\Workspace\Figures



© Cardno Limited All Rights Reserved.  
This document is produced by Cardno Limited solely for the benefit of and use by the client in accordance with the terms of the retainer. Cardno Limited does not and shall not assume any responsibility or liability whatsoever to any third party arising out of any use or reliance by third party on the content of this document.

Date  
17/5/2017  
Size  
A3

**BEGA VALLEY SHIRE COUNCIL**  
**BEGA AND BROGO FRMS&P**  
FIGURE 5-13 RAVENSWOOD ST - CHARLOTTE ST BEGA TRIBUTARY  
LOCAL OVERLAND FLOW  
1% AEP PROVISIONAL HAZARD



**LEGEND**  
**PROVISIONAL HAZARD**

- High
- Transitional Zone
- Low

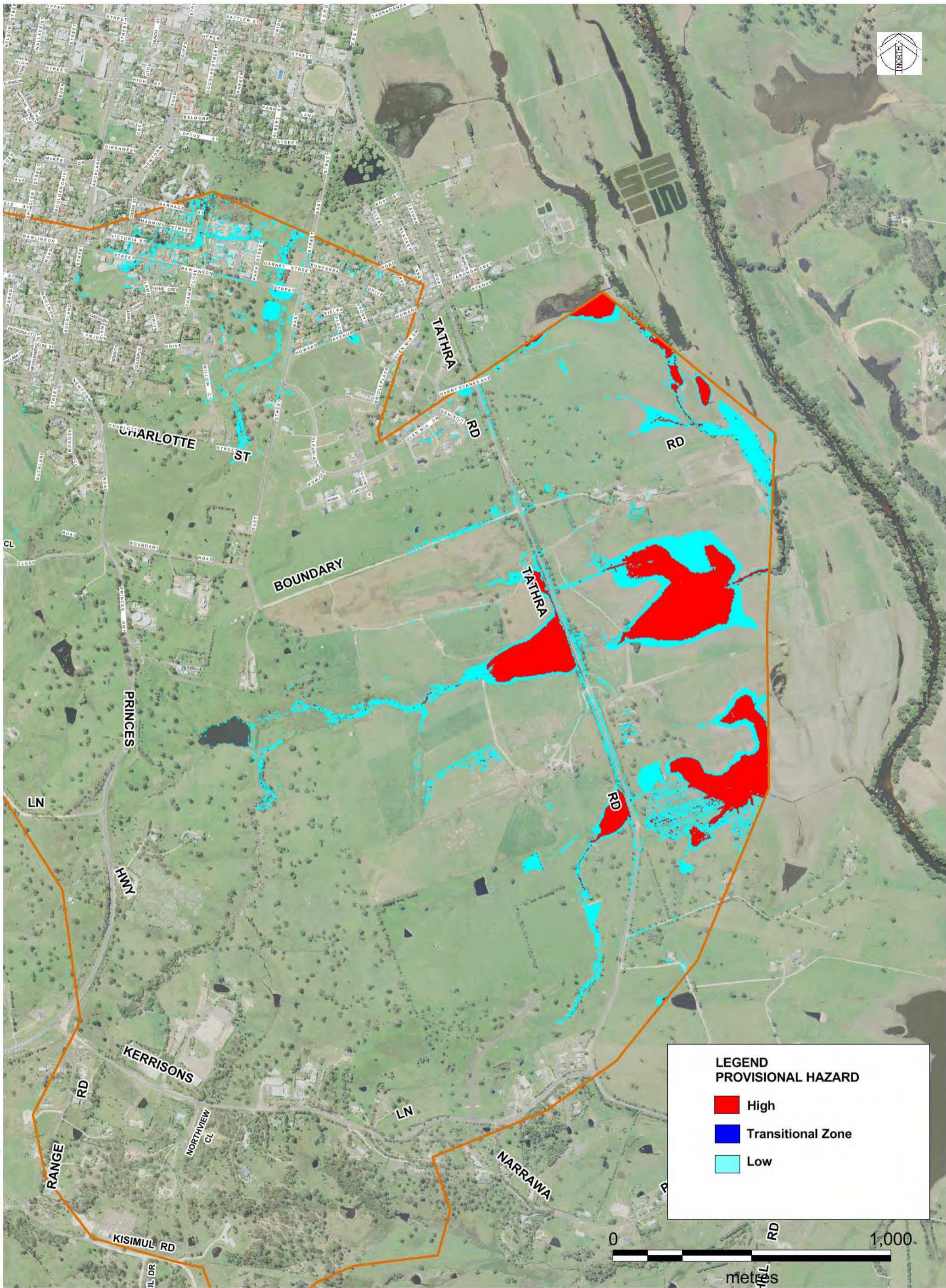
DATE PLOTTED: 25/01/2017 BY: Luke Evans  
FILE: N:\Projects\5599\FY16\044\_Bega & Brogo Rivers FRMS&P\Drawings\Workspaces\Figures



© Cardno Limited All Rights Reserved.  
This document is produced by Cardno Limited solely for the benefit of and use by the client in accordance with the terms of the retainer. Cardno Limited does not and shall not assume any responsibility or liability whatsoever to any third party arising out of any use or reliance by third party on the content of this document.

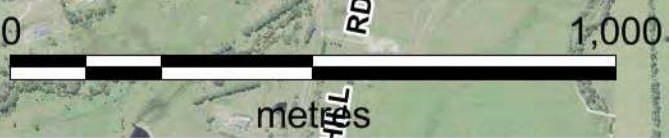
Date  
17/5/2017  
Size  
A3

**BEGA VALLEY SHIRE COUNCIL**  
**BEGA AND BROGO FRMS&P**  
FIGURE 5-14 RAWLINSON ST - EAST ST BEGA TRIBUTARY  
LOCAL OVERLAND FLOWS  
1% AEP PROVISIONAL HAZARD



**LEGEND  
PROVISIONAL HAZARD**

- High
- Transitional Zone
- Low



DATE PLOTTED: 25/01/2017 BY: Luke Evans  
FILE: N:\Projects\599\FY16\044\_Bega & Brogo Rivers FRMS&P\Drawings\Workspace\Figures

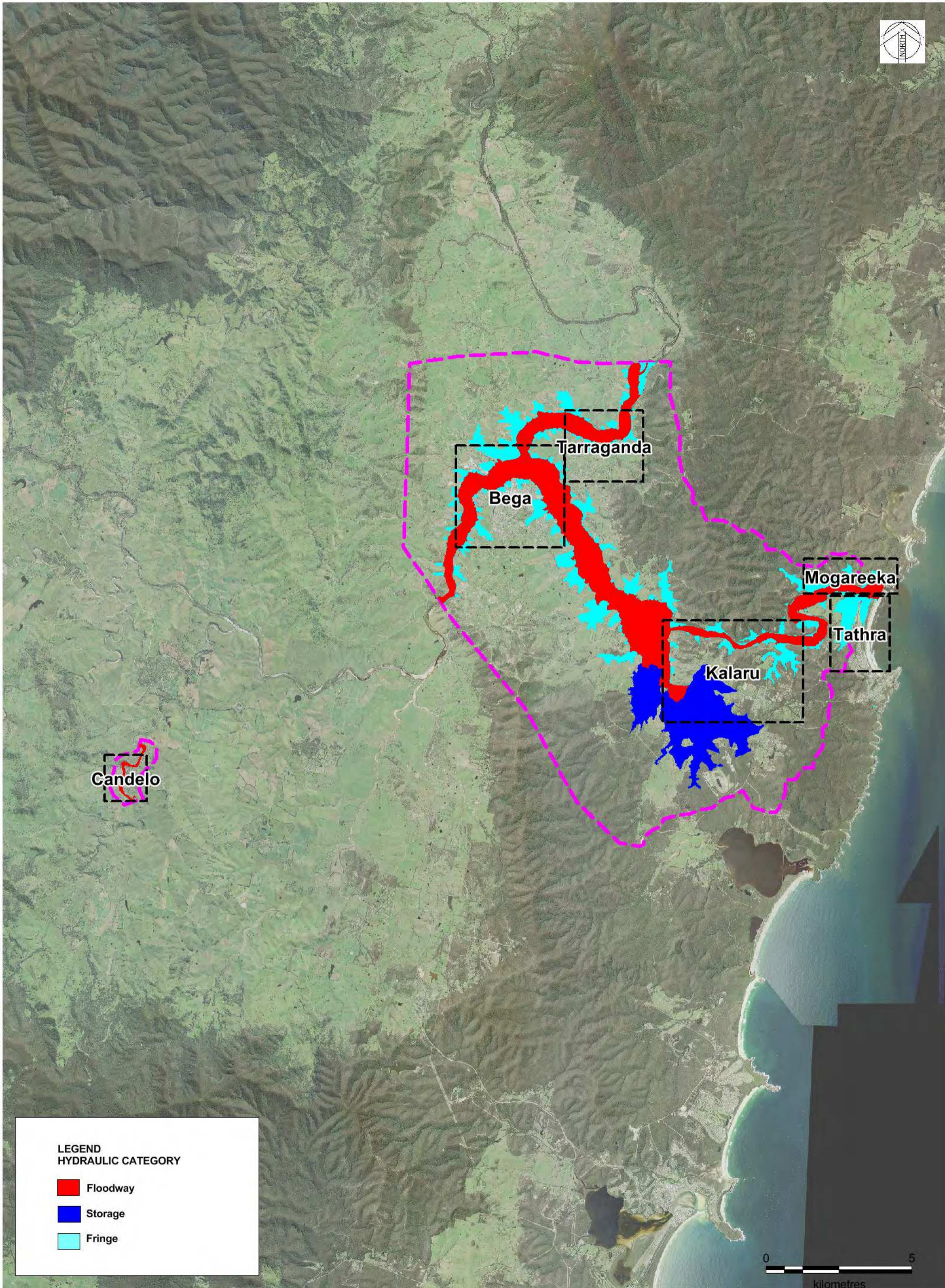


© Cardno Limited All Rights Reserved.  
This document is produced by Cardno Limited solely for the benefit of and use by the client in accordance with the terms of the retainer. Cardno Limited does not and shall not assume any responsibility or liability whatsoever to any third party arising out of any use or reliance by third party on the content of this document.

Date  
17/5/2017  
Size  
A3

**BEGA VALLEY SHIRE COUNCIL  
BEGA AND BROGO FRMS&P**

**FIGURE 5-15 BOUNDARY RD- KERRISONS LANE BEGA TRIBUTARY  
LOCAL OVERLAND FLOWS  
1% AEP PROVISIONAL HAZARD**



**LEGEND  
HYDRAULIC CATEGORY**

- Floodway
- Storage
- Fringe

DATE PLOTTED: 25/01/2017 BY: Luke Evans  
FILE: N:\Projects\559\FY16\044\_Bega & Brogo Rivers FRMS&P\Drawings\Workspace\Figures



© Cardno Limited All Rights Reserved.  
This document is produced by Cardno Limited solely for the benefit of and use by the client in accordance with the terms of the retainer. Cardno Limited does not and shall not assume any responsibility or liability whatsoever to any third party arising out of any use or reliance by third party on the content of this document.

Date  
3/5/2017

Size  
A3

Scale  
1:120,000

**BEGA VALLEY SHIRE COUNCIL  
BEGA AND BROGO FRMS&P**

10 % AEP HYDRAULIC CATEGORY

FIGURE 5.16



**LEGEND**  
**HYDRAULIC CATEGORY**

- Floodway
- Storage
- Fringe

DATE PLOTTED: 25/01/2017 BY: Luke Evans  
FILE: N:\Projects\659\FY16\044\_Bega & Brogo Rivers FRMS&P\Drawings\Workspace\Figures



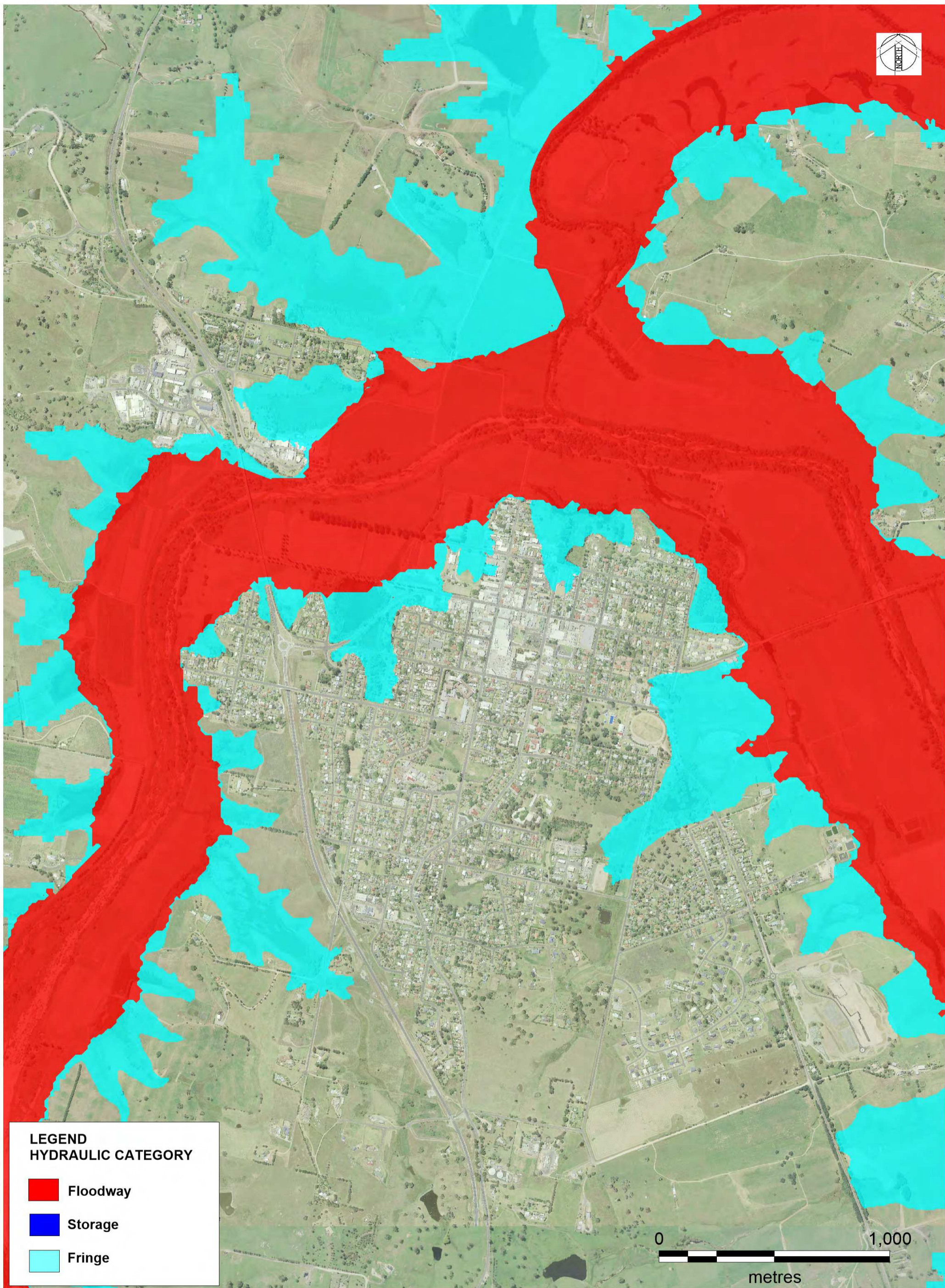
© Cardno Limited All Rights Reserved  
This document is produced by Cardno Limited solely for the benefit of and use by the client in accordance with the terms of the retainer. Cardno Limited does not and shall not assume any responsibility or liability whatsoever to any third party arising out of any use or reliance by third party on the content of this document.

Date  
17/5/2017  
Size  
A3

**BEGA VALLEY SHIRE COUNCIL**  
**BEGA AND BROGO FRMS&P**

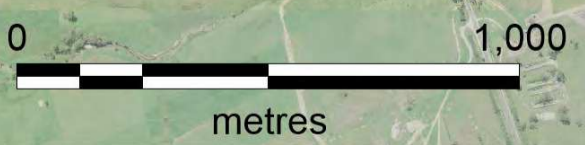
CANDELO INSET  
10% AEP HYDRAULIC CATEGORIES  
FIGURE 5.16A





**LEGEND**  
**HYDRAULIC CATEGORY**

- Floodway
- Fringe
- Storage



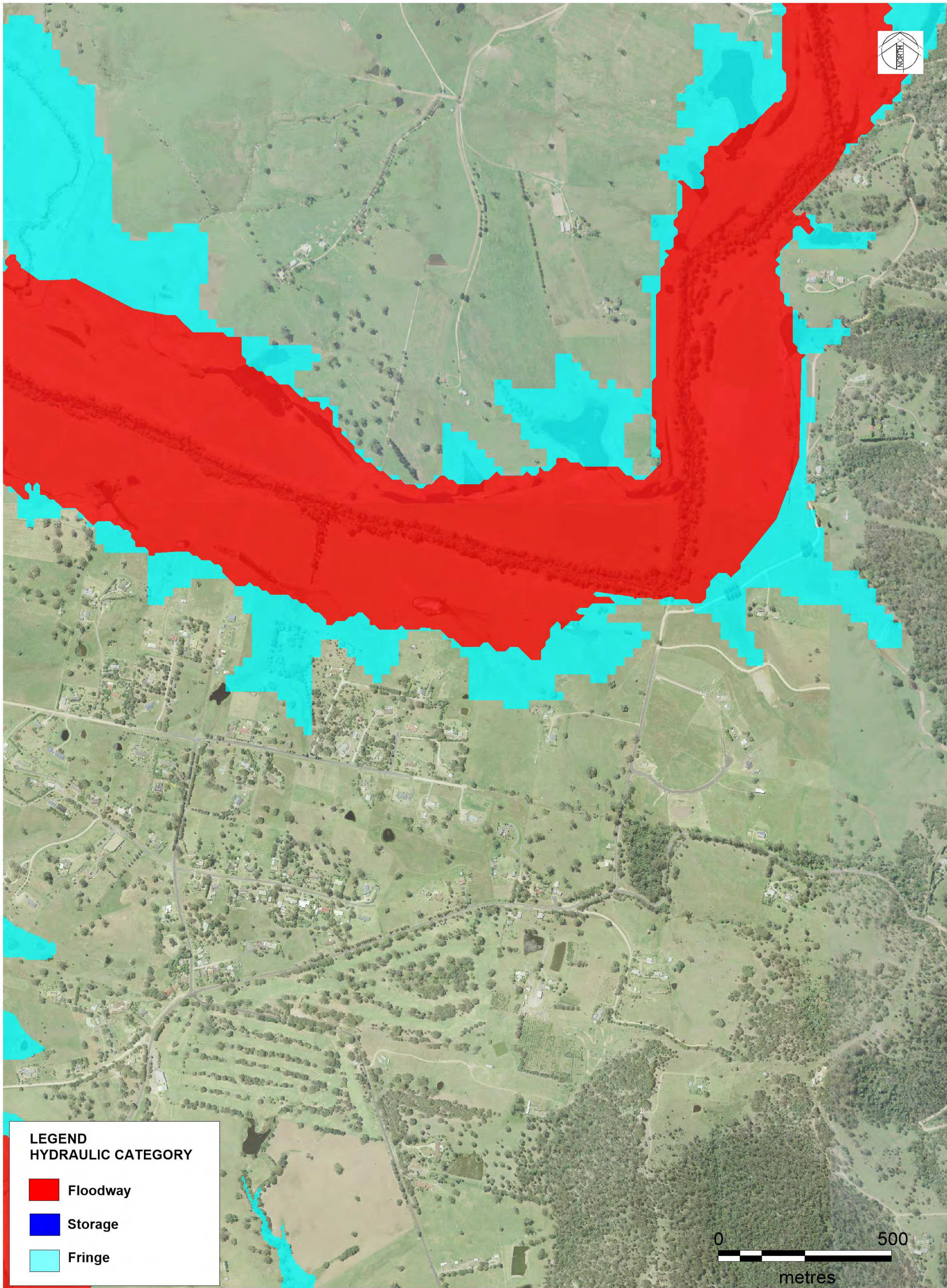
DATE PLOTTED: 25/01/2017 BY: Luke Evans  
FILE: N:\Projects\699\FY16\044\_Bega & Brogo Rivers FRMS&P\Drawings\Workspace\Figures



© Cardno Limited All Rights Reserved.  
This document is produced by Cardno Limited solely for the benefit of and use by the client in accordance with the terms of the retainer. Cardno Limited does not and shall not assume any responsibility or liability whatsoever to any third party arising out of any use or reliance by third party on the content of this document.

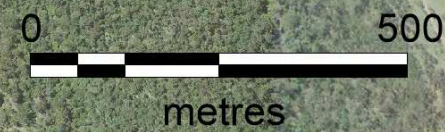
Date  
17/5/2017  
Size  
A3

**BEGA VALLEY SHIRE COUNCIL**  
**BEGA AND BROGO FRMS&P**  
BEGA INSET  
10% AEP HYDRAULIC CATEGORIES  
FIGURE 5.16B



**LEGEND  
HYDRAULIC CATEGORY**

- Floodway
- Storage
- Fringe



DATE PLOTTED: 25/01/2017 BY: Luke Evans  
FILE: N:\Projects\659\FY16\044\_Bega & Brogo Rivers FRMS&P\Drawings\Workspace\Figures

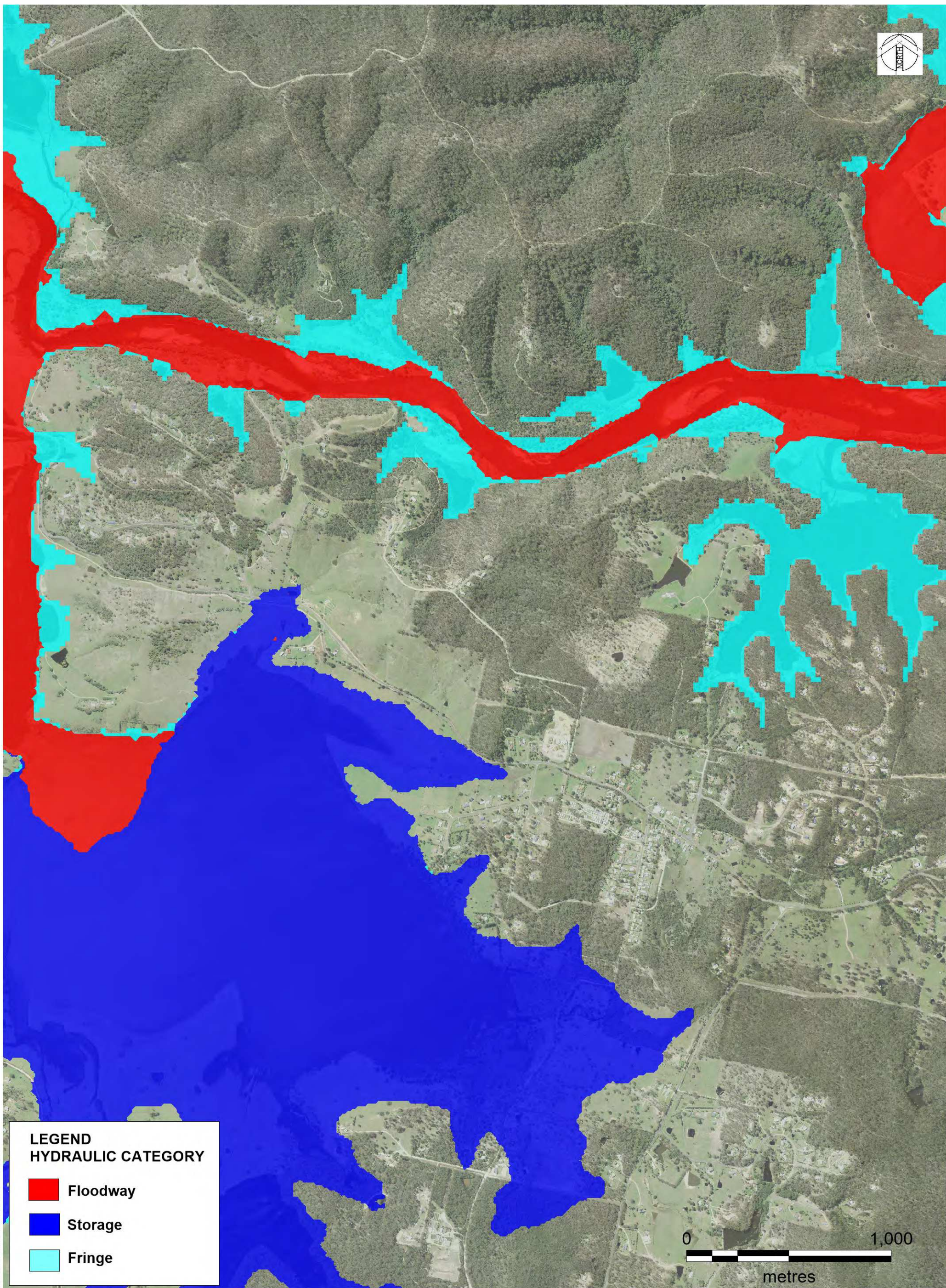


© Cardno Limited All Rights Reserved.  
This document is produced by Cardno Limited solely for the benefit of and use by the client in accordance with the terms of the retainer. Cardno Limited does not and shall not assume any responsibility or liability whatsoever to any third party arising out of any use or reliance by third party on the content of this document.

Date  
17/5/2017  
Size  
A3

**BEGA VALLEY SHIRE COUNCIL**  
**BEGA AND BROGO FRMS&P**  
TARRAGANDA INSET  
10% AEP HYDRAULIC CATEGORIES

FIGURE 5.16C



**LEGEND  
HYDRAULIC CATEGORY**

- Floodway
- Storage
- Fringe



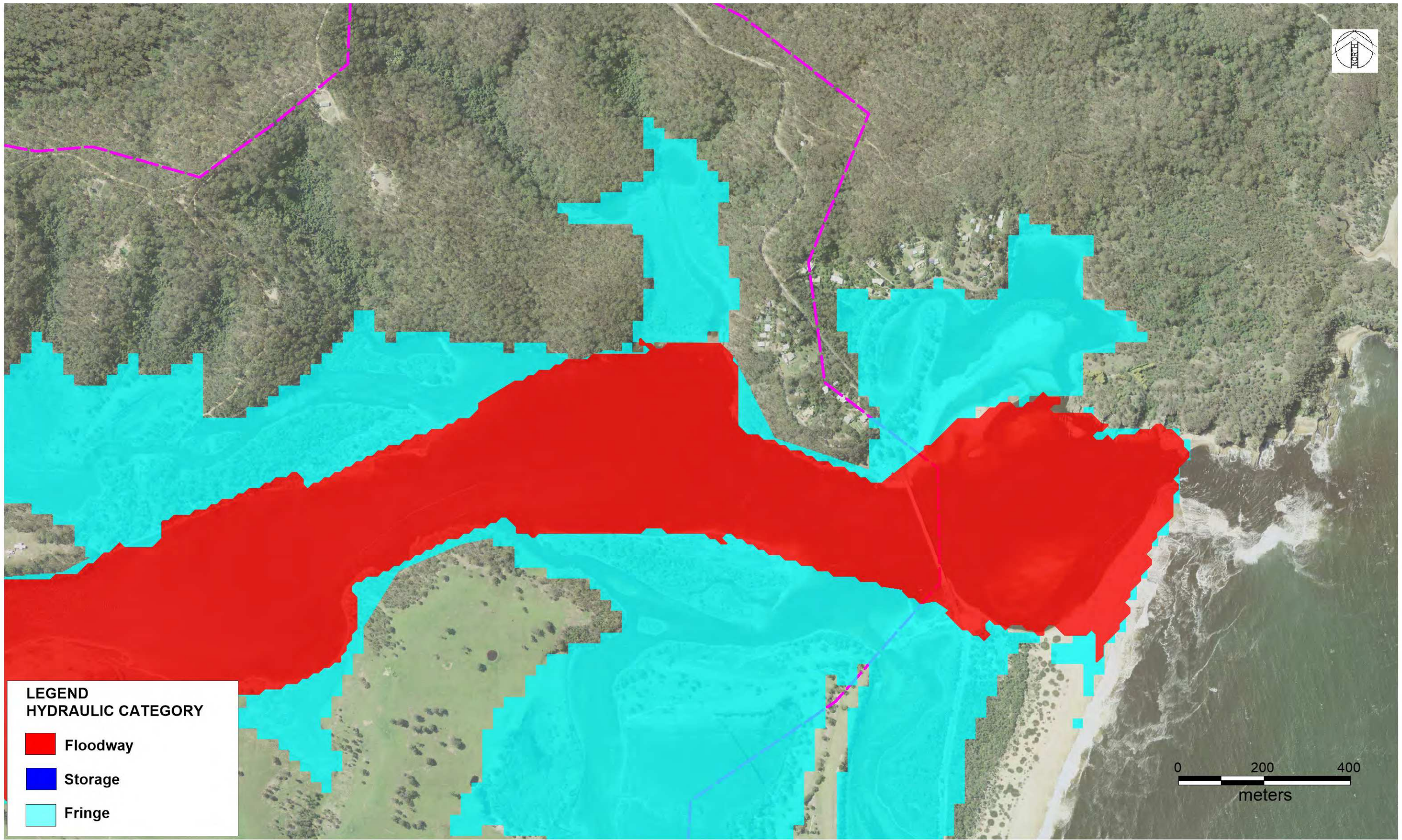
DATE PLOTTED: 25/01/2017 BY: Luke Evans  
FILE: N:\Projects\699\FY16\044\_Bega & Brogo Rivers FRMS&P\Drawings\Workspace\Figures



© Cardno Limited All Rights Reserved  
This document is produced by Cardno Limited solely for the benefit of and use by the client in accordance with the terms of the retainer. Cardno Limited does not and shall not assume any responsibility or liability whatsoever to any third party arising out of any use or reliance by third party on the content of this document.

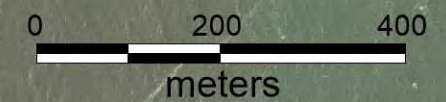
Date  
17/5/2017  
Size  
A3

BEGA VALLEY SHIRE COUNCIL  
BEGA AND BROGO FRMS&P  
KALARU INSET  
10% AEP HYDRAULIC CATEGORIES  
FIGURE 5.16D



**LEGEND  
HYDRAULIC CATEGORY**

- Floodway
- Storage
- Fringe



DATE PLOTTED: 25/01/2017 BY: Luke Evans  
FILE: N:\Projects\699\F16044\_Bega & Brogo Rivers FRMS&P\Drawings\Workspace\Figures

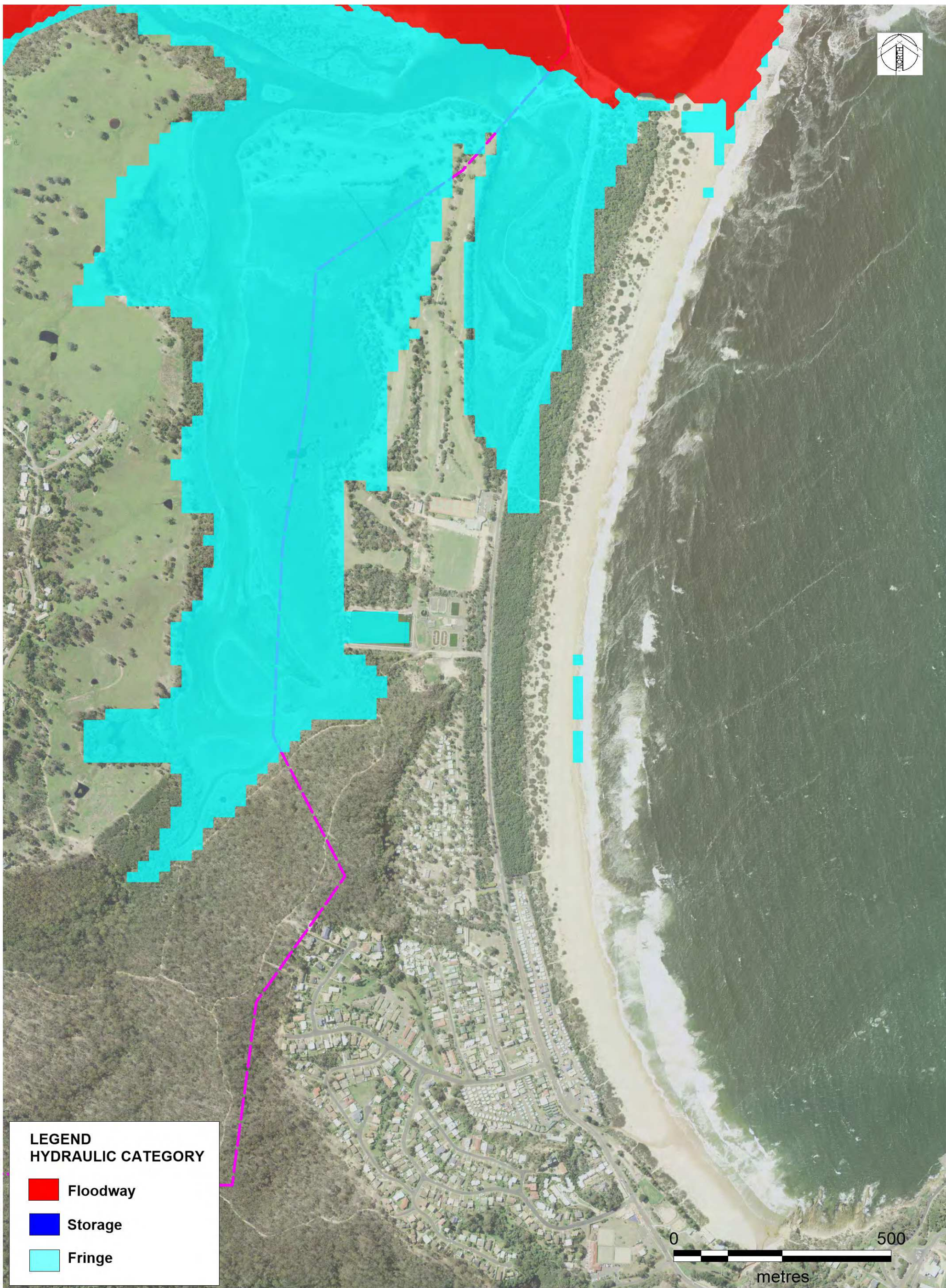


© Cardno Limited All Rights Reserved.  
This document is produced by Cardno Limited solely for the benefit of and use by the client in accordance with the terms of the retainer. Cardno Limited does not and shall not assume any responsibility or liability whatsoever to any third party arising out of any use or reliance by third party on the content of this document.

Date  
3/5/2017  
Size  
A3

**BEGA VALLEY SHIRE COUNCIL**  
**BEGA AND BROGO FRMS&P**  
MOGAREEKA INSET  
10% AEP HYDRAULIC CATEGORIES

FIGURE 5.16E



**LEGEND  
HYDRAULIC CATEGORY**

- Floodway
- Storage
- Fringe

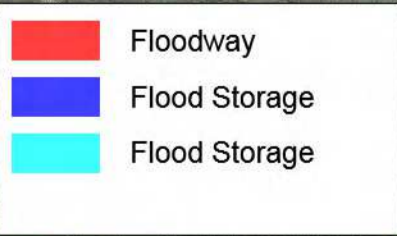
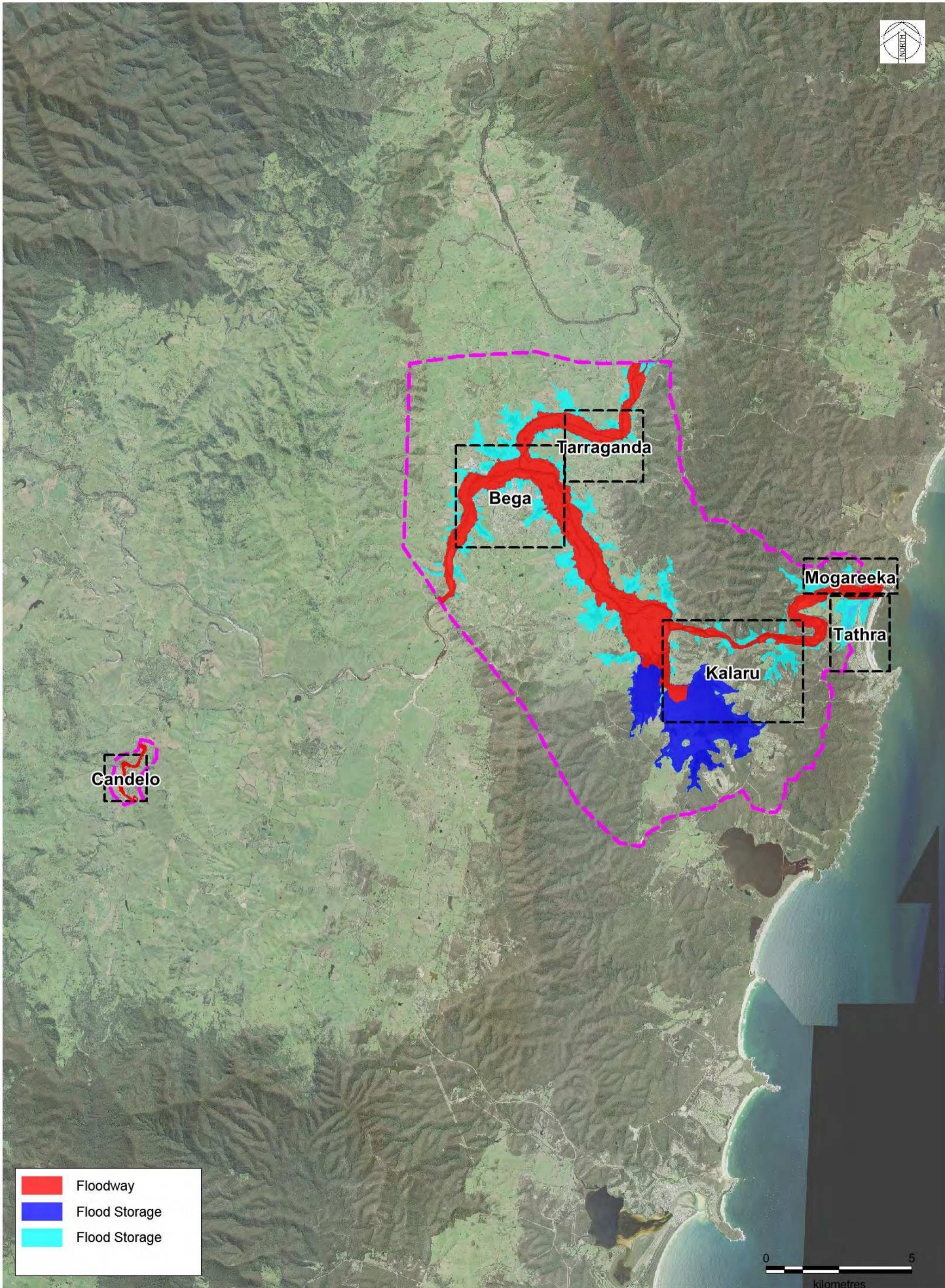
DATE PLOTTED: 25/01/2017 BY: Luke Evans  
FILE: N:\Projects\699\FY16\044\_Bega & Brogo Rivers FRMS&P\Drawings\Workspace\Figures



© Cardno Limited All Rights Reserved  
This document is produced by Cardno Limited solely for the benefit of and use by the client in accordance with the terms of the retainer. Cardno Limited does not and shall not assume any responsibility or liability whatsoever to any third party arising out of any use or reliance by third party on the content of this document.

Date  
17/5/2017  
Size  
A3

**BEGA VALLEY SHIRE COUNCIL**  
**BEGA AND BROGO FRMS&P**  
TATHRA INSET  
10% AEP HYDRAULIC CATEGORIES  
FIGURE 5.16F



DATE PLOTTED: 25/01/2017 BY: Luke Evans  
 FILE: N:\Projects\559\FY16\044\_Bega & Brogo Rivers FRMS&P\Drawings\Workspace\Figures



© Cardno Limited All Rights Reserved.  
 This document is produced by Cardno Limited solely for the benefit of and use by the client in accordance with the terms of the retainer. Cardno Limited does not and shall not assume any responsibility or liability whatsoever to any third party arising out of any use or reliance by third party on the content of this document.

Date  
3/5/2017

Size  
A3

Scale  
1:120,000

**BEGA VALLEY SHIRE COUNCIL  
 BEGA AND BROGO FRMS&P**

5 % AEP HYDRAULIC CATEGORY

FIGURE 5.17



**LEGEND  
HYDRAULIC CATEGORY**

- Floodway
- Storage
- Fringe

DATE PLOTTED: 25/01/2017 BY: Luke Evans  
FILE: N:\Projects\699\FY16\044\_Bega & Brogo Rivers FRMS&P\Drawings\Workspaces\Figures

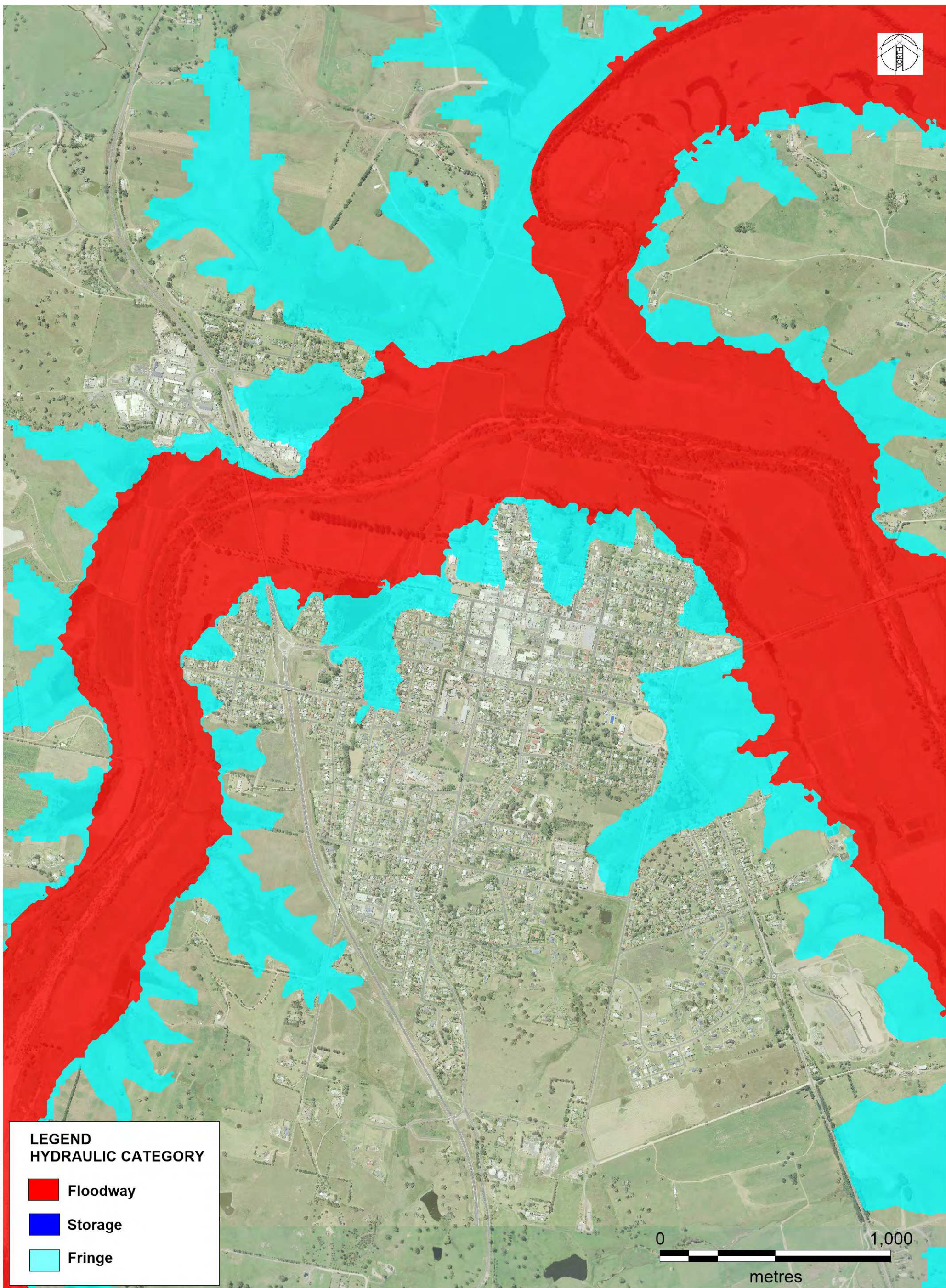


© Cardno Limited All Rights Reserved  
This document is produced by Cardno Limited solely for the benefit of and use by the client in accordance with the terms of the retainer. Cardno Limited does not and shall not assume any responsibility or liability whatsoever to any third party arising out of any use or reliance by third party on the content of this document.

Date  
17/5/2017  
Size  
A3

**BEGA VALLEY SHIRE COUNCIL**  
**BEGA AND BROGO FRMS&P**  
CANDELO INSET  
5% AEP HYDRAULIC CATEGORIES

FIGURE 5.17A



**LEGEND  
HYDRAULIC CATEGORY**

- Floodway
- Fringe
- Storage



DATE PLOTTED: 25/01/2017 BY: Luke Evans  
FILE: N:\Projects\699\FY16\044\_Bega & Brogo Rivers FRMS&P\Drawings\Workspaces\Figures



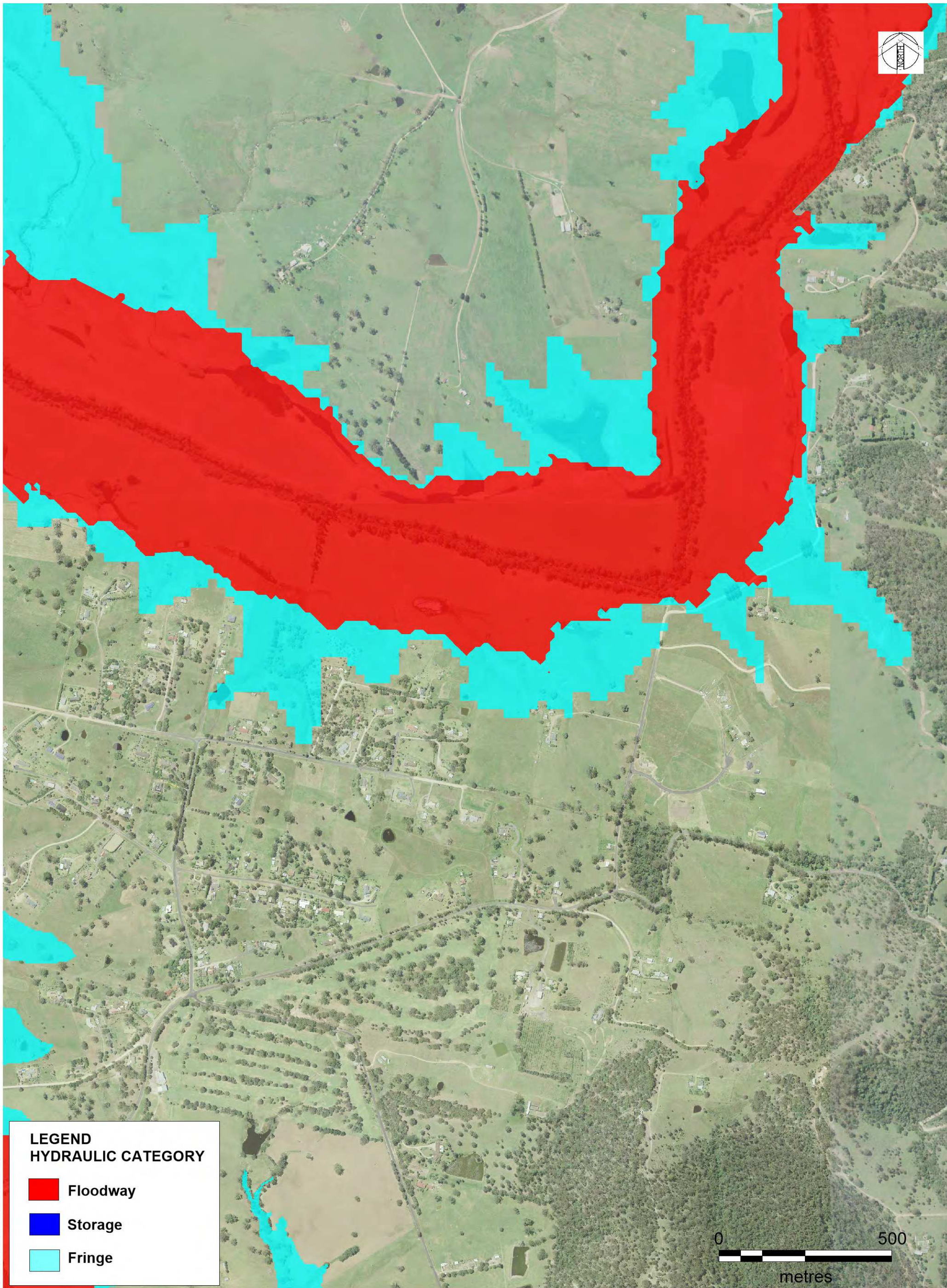
© Cardno Limited All Rights Reserved  
This document is produced by Cardno Limited solely for the benefit of and use by the client in accordance with the terms of the retainer. Cardno Limited does not and shall not assume any responsibility or liability whatsoever to any third party arising out of any use or reliance by third party on the content of this document.

Date  
17/5/2017  
Size  
A3

**BEGA VALLEY SHIRE COUNCIL**  
**BEGA AND BROGO FRMS&P**  
BEGA INSET  
5% AEP HYDRAULIC CATEGORIES

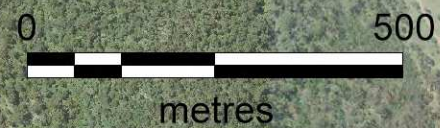
FIGURE 5.17B





**LEGEND  
HYDRAULIC CATEGORY**

- Floodway
- Storage
- Fringe



DATE PLOTTED: 25/01/2017 BY: Luke Evans  
FILE: N:\Projects\699\FY16\044\_Bega & Brogo Rivers FRMS&P\Drawings\Workspace\Figures

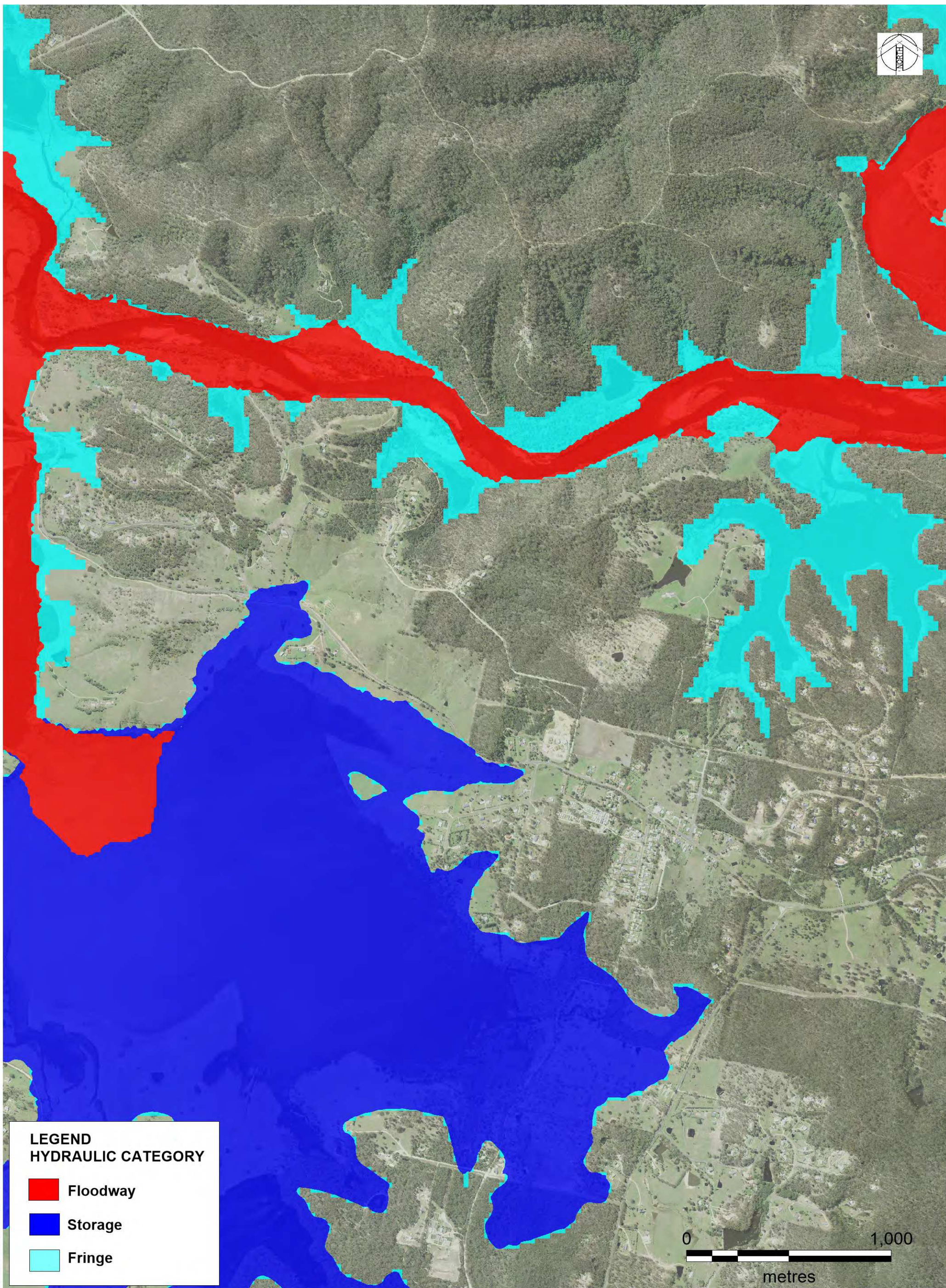


© Cardno Limited All Rights Reserved  
This document is produced by Cardno Limited solely for the benefit of and use by the client in accordance with the terms of the retainer. Cardno Limited does not and shall not assume any responsibility or liability whatsoever to any third party arising out of any use or reliance by third party on the content of this document.

Date  
17/5/2017  
Size  
A3

**BEGA VALLEY SHIRE COUNCIL**  
**BEGA AND BROGO FRMS&P**  
TARRAGANDA INSET  
5% AEP HYDRAULIC CATEGORIES

FIGURE 5.17C



**LEGEND  
HYDRAULIC CATEGORY**

- Floodway
- Storage
- Fringe



DATE PLOTTED: 25/01/2017 BY: Luke Evans  
FILE: N:\Projects\699\FY16\044\_Bega & Brogo Rivers FRMS&P\Drawings\Workspace\Figures

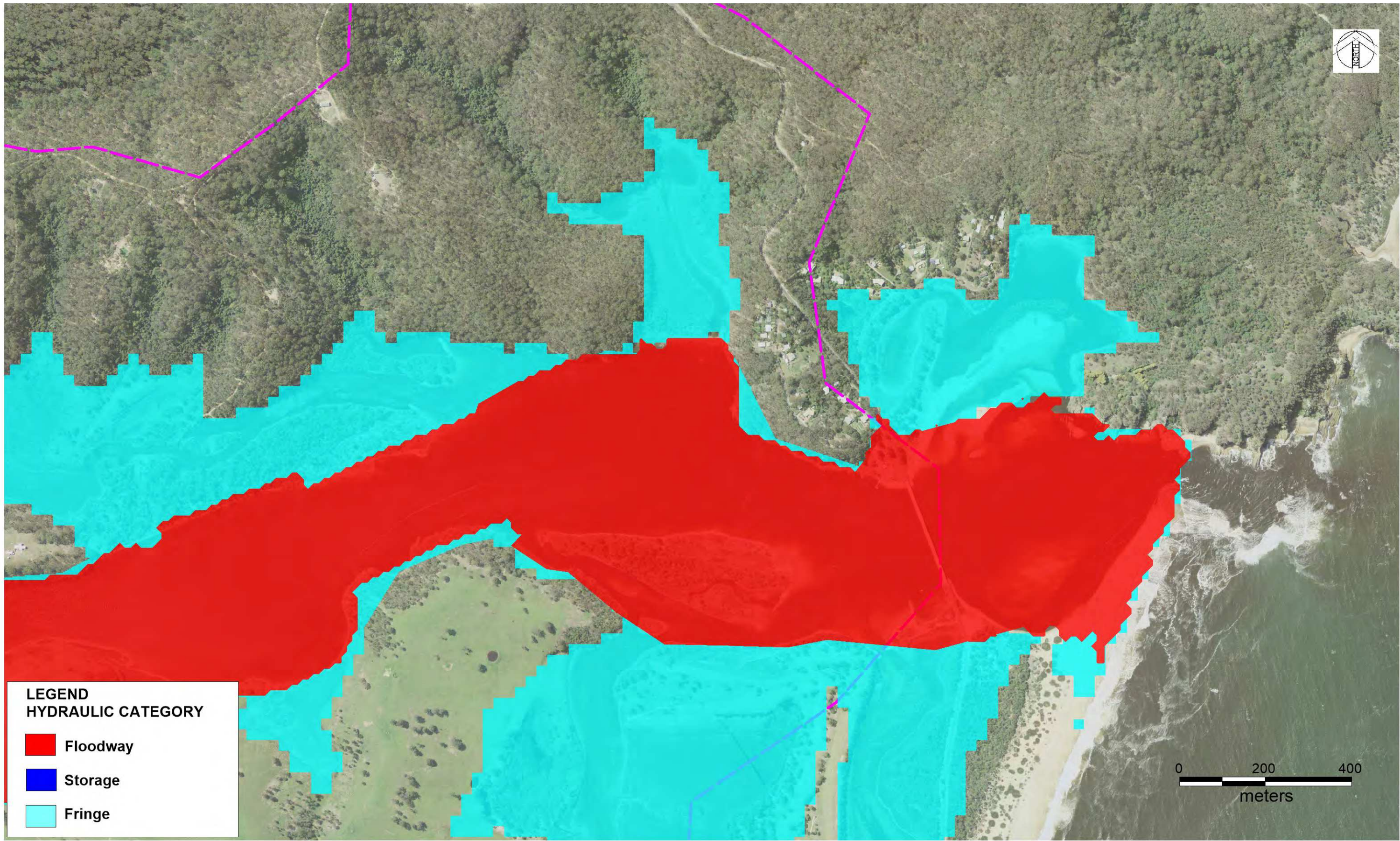


© Cardno Limited All Rights Reserved  
This document is produced by Cardno Limited solely for the benefit of and use by the client in accordance with the terms of the retainer. Cardno Limited does not and shall not assume any responsibility or liability whatsoever to any third party arising out of any use or reliance by third party on the content of this document.

Date  
17/5/2017  
Size  
A3

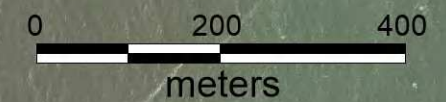
**BEGA VALLEY SHIRE COUNCIL**  
**BEGA AND BROGO FRMS&P**  
KALARU INSET  
5% AEP HYDRAULIC CATEGORIES

FIGURE 5.17D



**LEGEND  
HYDRAULIC CATEGORY**

- Floodway
- Storage
- Fringe



DATE PLOTTED: 25/01/2017 BY: Luke Evans  
FILE: N:\Projects\699\F16044\_Bega & Brogo Rivers FRMS&P\Drawings\Workspace\Figures

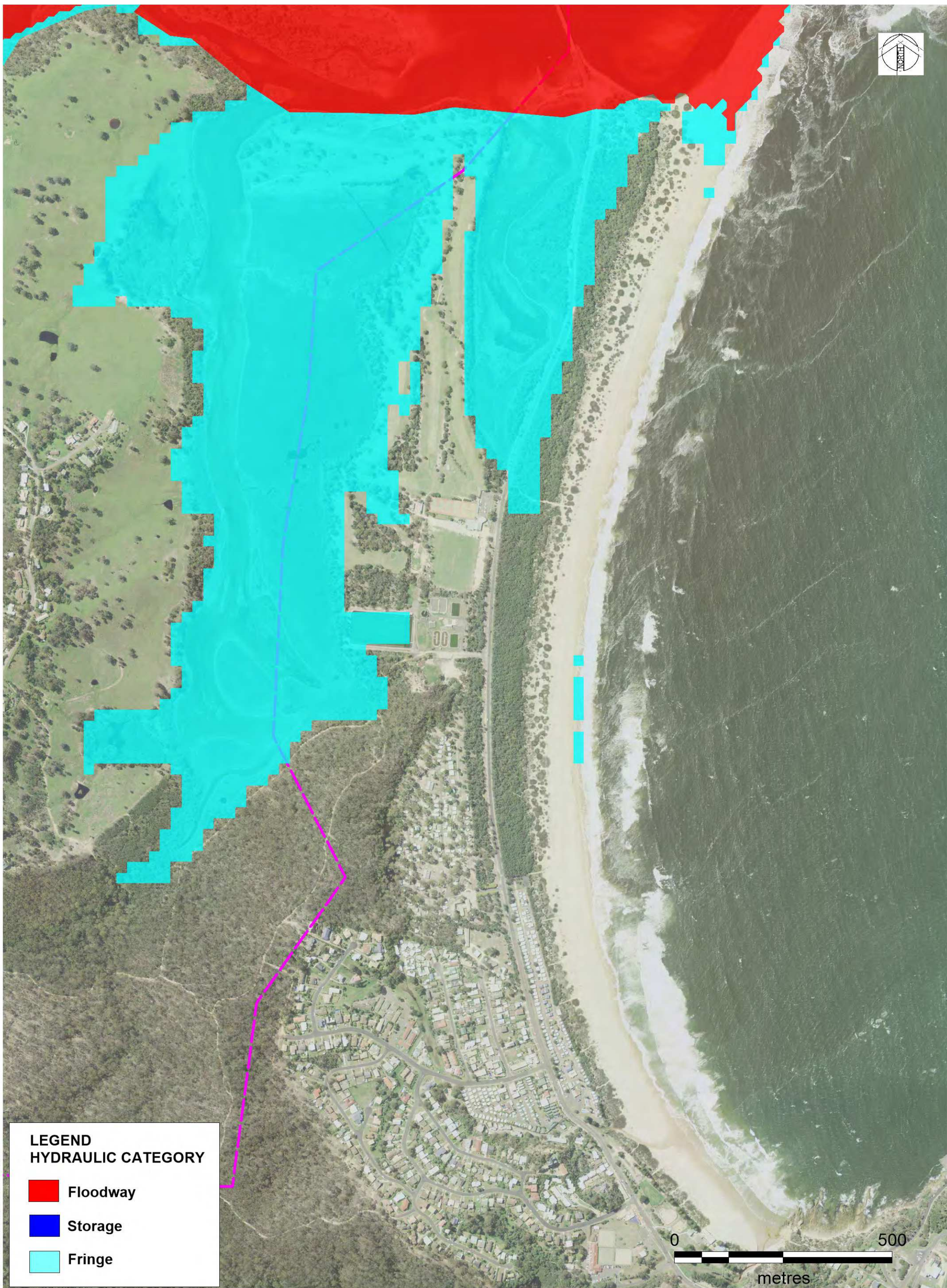


© Cardno Limited All Rights Reserved.  
This document is produced by Cardno Limited solely for the benefit of and use by the client in accordance with the terms of the retainer. Cardno Limited does not and shall not assume any responsibility or liability whatsoever to any third party arising out of any use or reliance by third party on the content of this document.

Date  
3/5/2017  
Size  
A3

**BEGA VALLEY SHIRE COUNCIL**  
**BEGA AND BROGO FRMS&P**  
MOGAREEKA INSET  
5% AEP HYDRAULIC CATEGORIES

FIGURE 5.17E



**LEGEND  
HYDRAULIC CATEGORY**

- Floodway
- Storage
- Fringe

DATE PLOTTED: 25/01/2017 BY: Luke Evans  
FILE: N:\Projects\699\FY16\044\_Bega & Brogo FRMS&P\Drawings\Workspaces\Figures

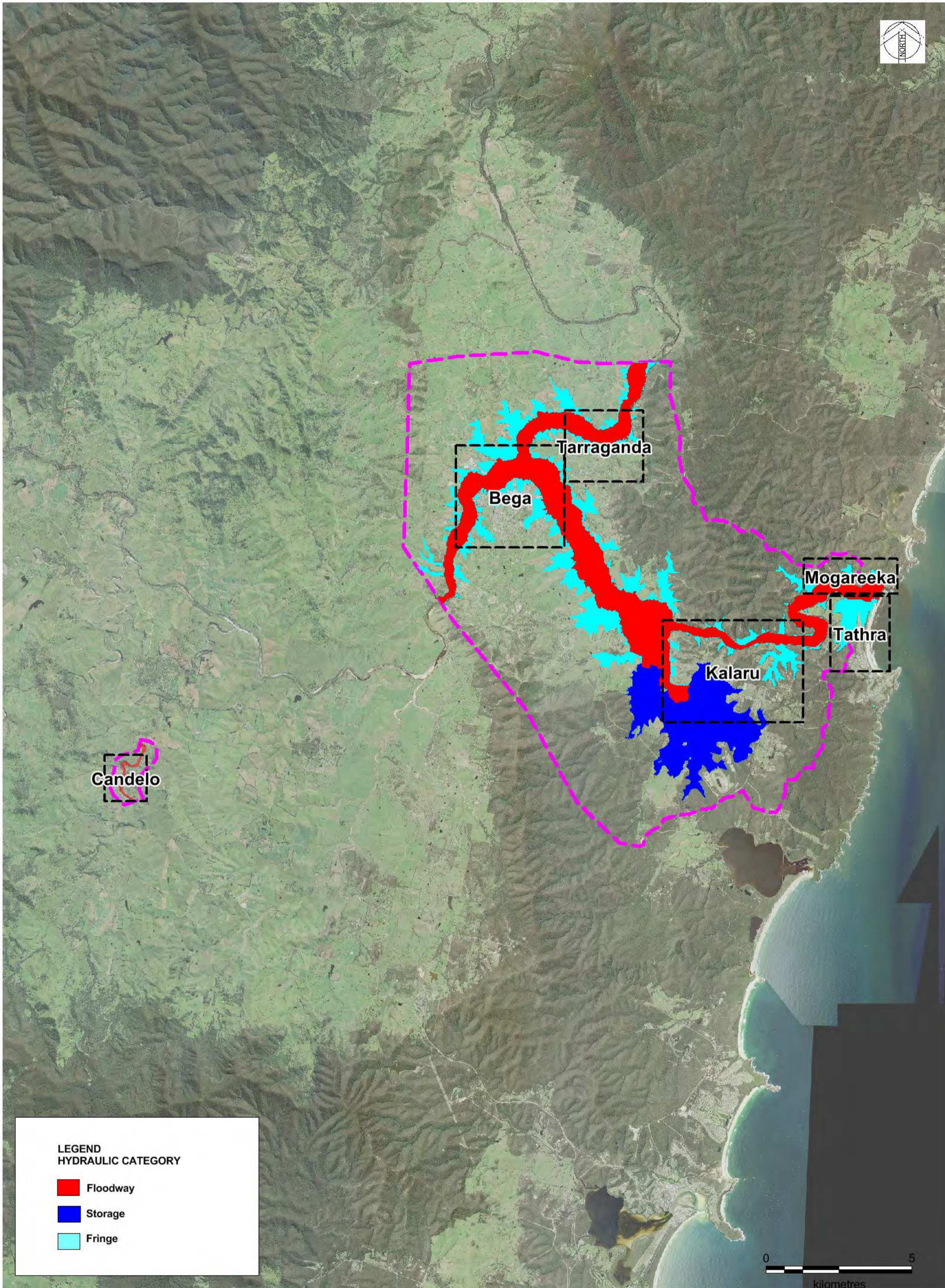


© Cardno Limited All Rights Reserved  
This document is produced by Cardno Limited solely for the benefit of and use by the client in accordance with the terms of the retainer. Cardno Limited does not and shall not assume any responsibility or liability whatsoever to any third party arising out of any use or reliance by third party on the content of this document.

Date  
17/5/2017  
Size  
A3

**BEGA VALLEY SHIRE COUNCIL  
BEGA AND BROGO FRMS&P  
TATHRA INSET  
5% AEP HYDRAULIC CATEGORIES**

FIGURE 5.17F



**LEGEND**  
**HYDRAULIC CATEGORY**

- Floodway
- Storage
- Fringe

DATE PLOTTED: 25/01/2017 BY: Luke Evans  
 FILE: N:\Projects\559\FY16\044\_Bega & Brogo Rivers FRMS&P\Drawings\Workspace\Figures



© Cardno Limited All Rights Reserved.  
 This document is produced by Cardno Limited solely for the benefit of and use by the client in accordance with the terms of the retainer. Cardno Limited does not and shall not assume any responsibility or liability whatsoever to any third party arising out of any use or reliance by third party on the content of this document.

Date  
 3/5/2017

Size  
 A3

Scale  
 1:120,000

**BEGA VALLEY SHIRE COUNCIL**  
**BEGA AND BROGO FRMS&P**

1 % AEP HYDRAULIC CATEGORY

FIGURE 5.18