

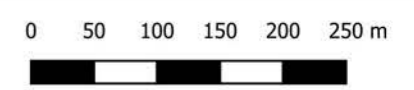
G512
Towamba
2011 Calibration



- Community Flood Extent
- Flood Survey
- Flood Extent

Community observed flood reached approximately the 40 mAHD contour (extent indicated on map at community drop in workshop)

Survey: 38.64 mAHD
Model: 38.54 mAHD
Difference: -0.1m






Scale 1:4000 @ A3
Date : 18 June 2019
Revision : A
Created by : LRE
Coordinate System : MGA94 Zone 55



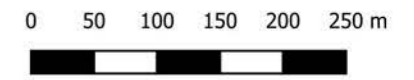
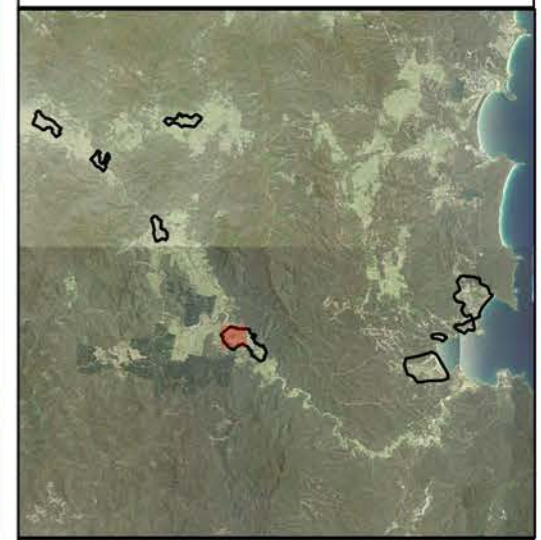
G513
Towamba
1978 Calibration



-  Community Flood Extent
-  Flood Survey
-  Flood Extent

Community observed flood reached approximately 40 from Pericoe Road.

Survey: 36.56 mAHD
Model: 36.39 mAHD
Difference: -0.13m



Scale 1:4000 @ A3
Date : 18 June 2019
Revision : A
Created by : LRE
Coordinate System : MGA94 Zone 55



Eden - North



G514 20% AEP Flood Depths & Community Observations

- Community Observations
- Depth (m)
- 0.25
- 0.5
- 1
- 1.5
- 2
- 2.5
- 5
- 10
- >10

Property access gets flooded
Bridge destroyed in 1978 flood

Bridge destroyed in 1978 flood

Dense vegetation cause erosion
and flooding issues

1978 Event destroyed bridge.
Upgraded crossing has not been overtopped.

Highway overtopped when
culvert blocked

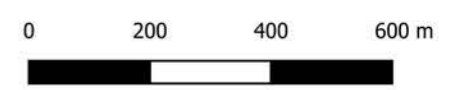
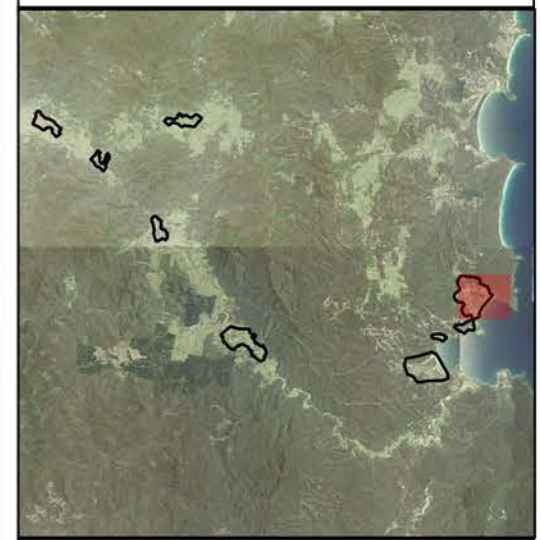
Eden - South

Old cannery used to flood
from catchment runoff

Road floods at
low point

Lagoon can breakout
after heavy rain

Local drainage issues



Scale 1:125000 @ A3
Date : 18 June 2019
Revision : A
Created by : LRE
Coordinate System : MGA94 Zone 55



Eden - North



G515 1% AEP Flood Depths & Community Observations

- Community Observations
- Depth (m)
- 0.25
 - 0.5
 - 1
 - 1.5
 - 2
 - 2.5
 - 5
 - 10
 - >10

Property access gets flooded
Bridge destroyed in 1978 flood

Bridge destroyed in 1978 flood

Dense vegetation cause erosion
and flooding issues

1978 Event destroyed bridge.
Upgraded crossing has not been overtopped.

Highway overtopped when
culvert blocked

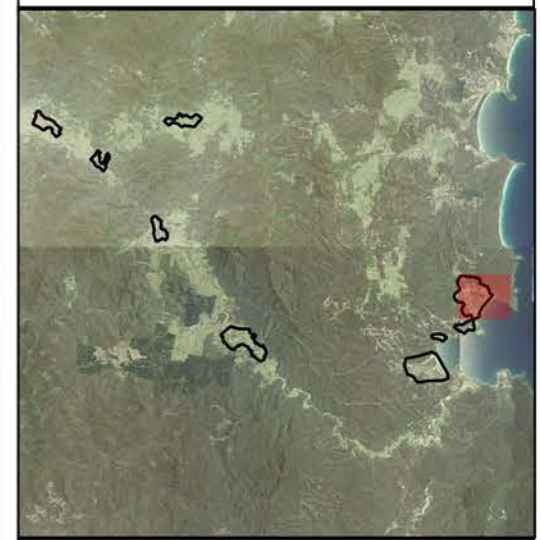
Road floods at
low point

Local drainage issues

Eden - South

Old cannery used to flood
from catchment runoff

Lagoon can breakout
after heavy rain



Scale 1:125000 @ A3
Date : 18 June 2019
Revision : A
Created by : LRE
Coordinate System : MGA94 Zone 55



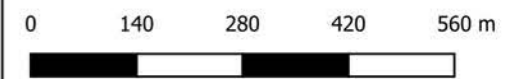
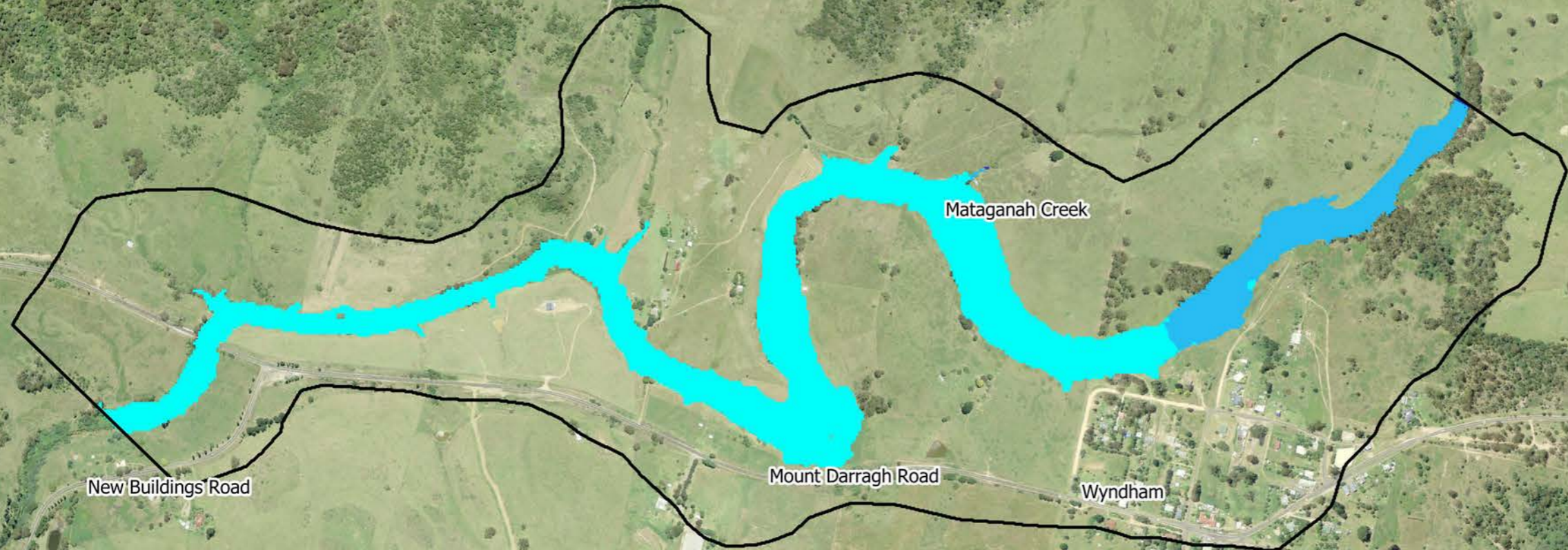
G516-a
Wyndham
ARR87 Differences



□ Model Area

Difference (m)
ARR2016 less ARR87

- <= -1
- 1 - -0.5
- 0.5 - -0.25
- 0.25 - -0.01
- 0.01 - 0.01
- 0.01 - 0.25
- 0.25 - 0.5
- 0.5 - 1
- > 1



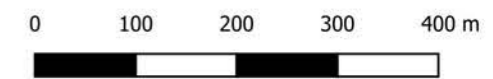
Scale : 1:10000 @A3
Date : 18 June 2019
Revision : A
Created by : LRE
Coordinate System : MGA94 Zone 55



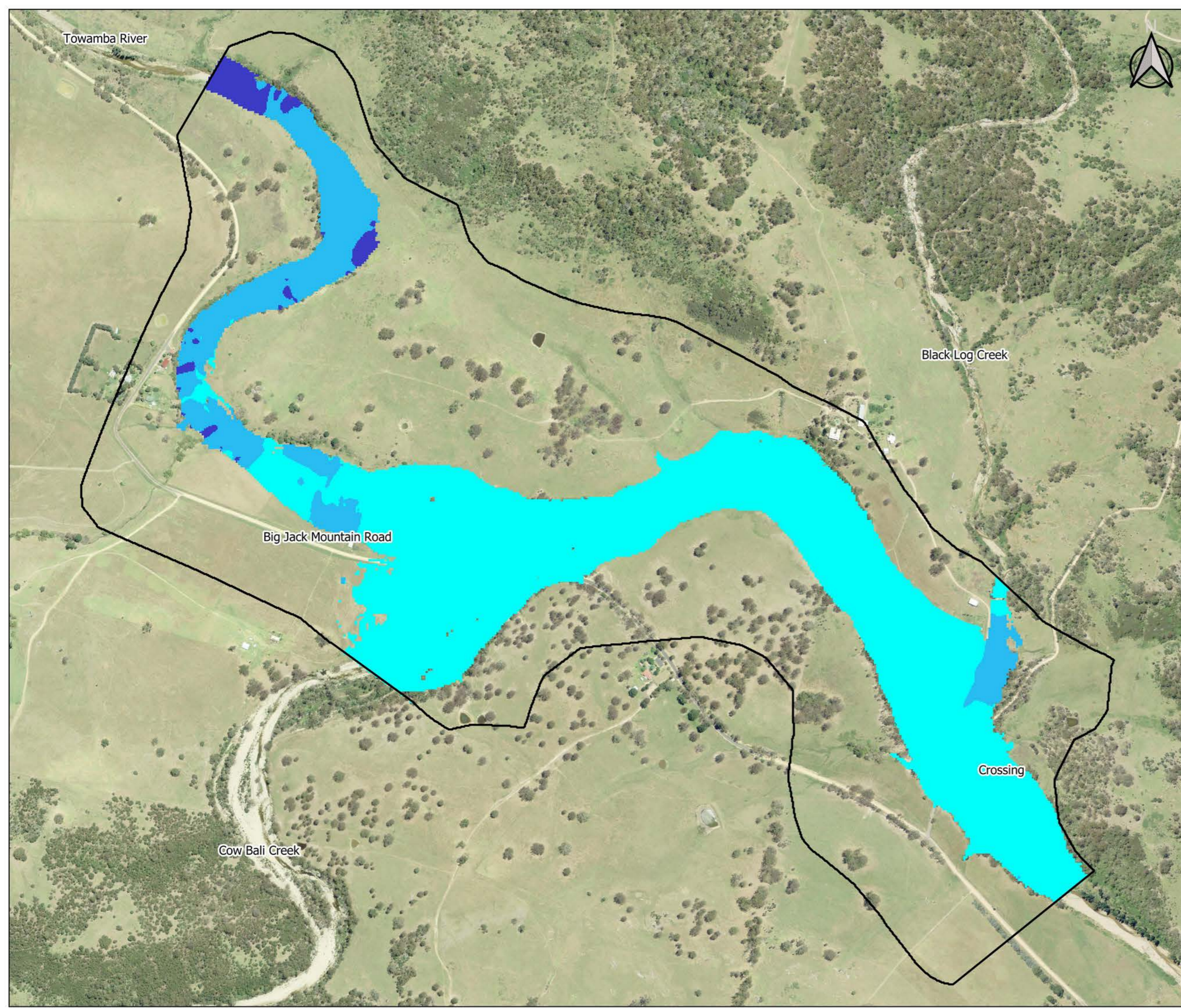
G516-b
Rocky Hall
ARR87 Differences



- Model Area
- Difference (m)
ARR2016 less ARR87
- ≤ -1
- $-1 - -0.5$
- $-0.5 - -0.25$
- $-0.25 - -0.01$
- $-0.01 - 0.01$
- $0.01 - 0.25$
- $0.25 - 0.5$
- $0.5 - 1$
- > 1



Scale : 1:7500 @A3
Date : 18 June 2019
Revision : A
Created by : LRE
Coordinate System : MGA94 Zone 55



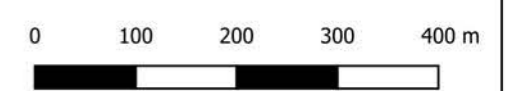
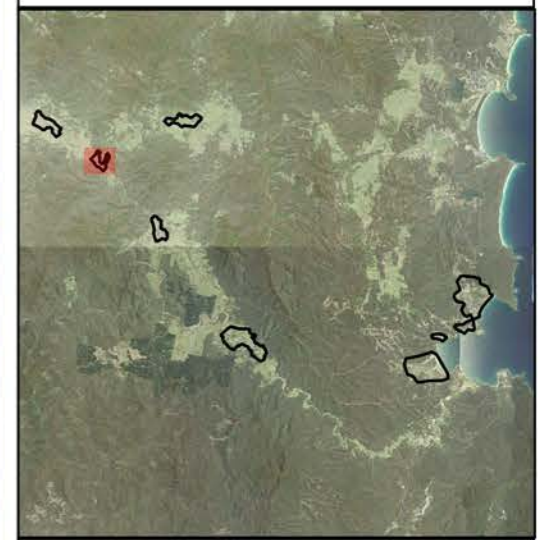
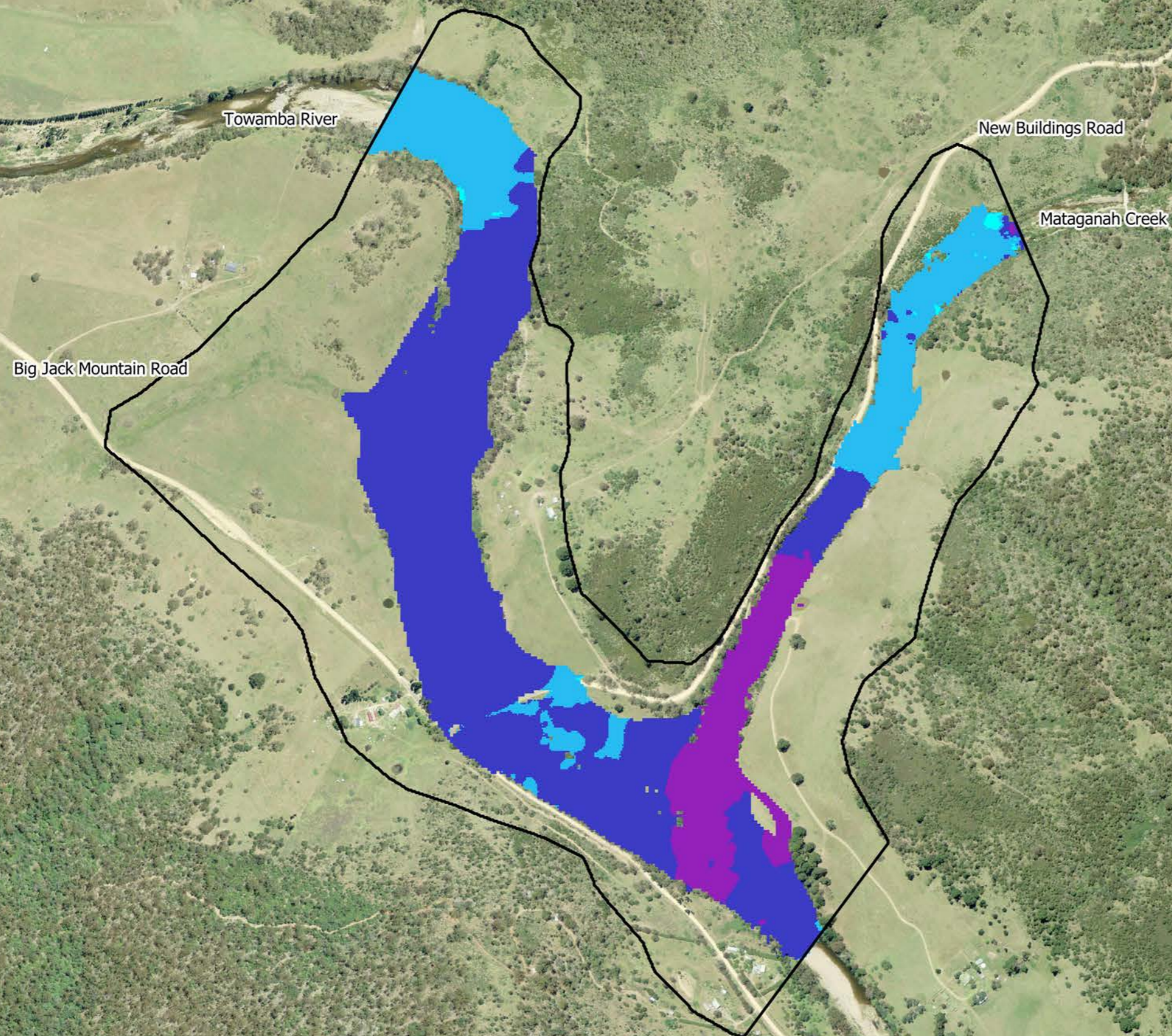
G516-c
New Buildings
ARR87 Differences



□ Model Area

Difference (m)
ARR2016 less ARR87

- <= -1
- 1 - -0.5
- 0.5 - -0.25
- 0.25 - -0.01
- 0.01 - 0.01
- 0.01 - 0.25
- 0.25 - 0.5
- 0.5 - 1
- > 1



Scale : 1:7500 @A3
Date : 18 June 2019
Revision : A
Created by : LRE
Coordinate System : MGA94 Zone 55



G516-d
Burragate
ARR87 Differences



□ Model Area

Difference (m)
ARR2016 less ARR87

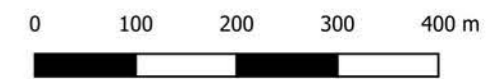
- <= -1
- 1 - -0.5
- 0.5 - -0.25
- 0.25 - -0.01
- 0.01 - 0.01
- 0.01 - 0.25
- 0.25 - 0.5
- 0.5 - 1
- > 1

Big Jack Mountain Road

Wyndham Street

Pericoe Street

Towamba River



Scale : 1:7500 @A3
Date : 18 June 2019
Revision : A
Created by : LRE
Coordinate System : MGA94 Zone 55



G516-e
Towamba
ARR87 Differences



□ Model Area

Difference (m)
ARR2016 less ARR87

- <= -1
- 1 - -0.5
- 0.5 - -0.25
- 0.25 - -0.01
- 0.01 - 0.01
- 0.01 - 0.25
- 0.25 - 0.5
- 0.5 - 1
- > 1

Towamba River

Pericoe Road

Towamba Road

Towamba Township



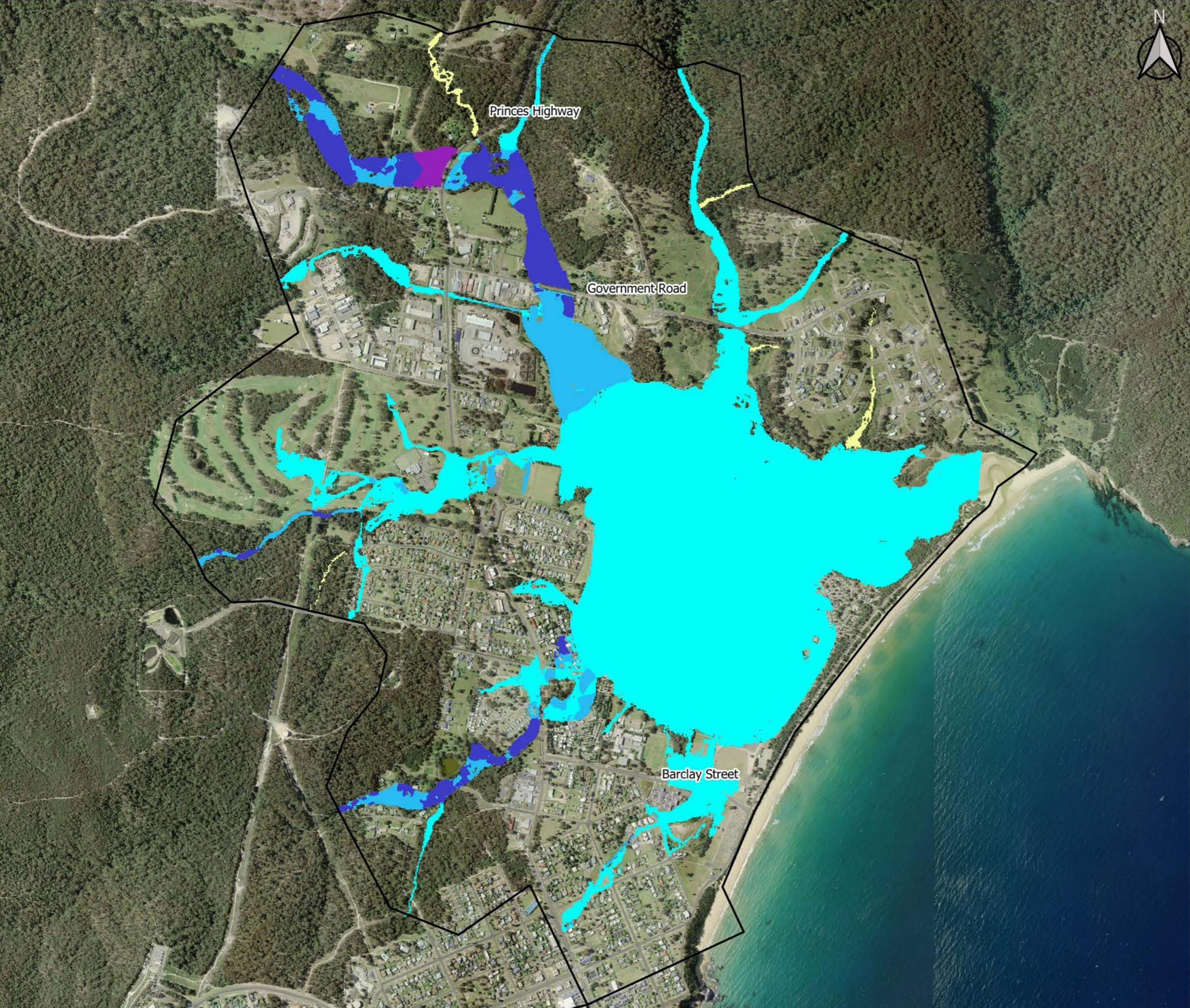
0 180 360 540 720 m



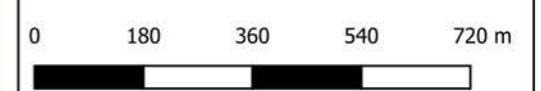
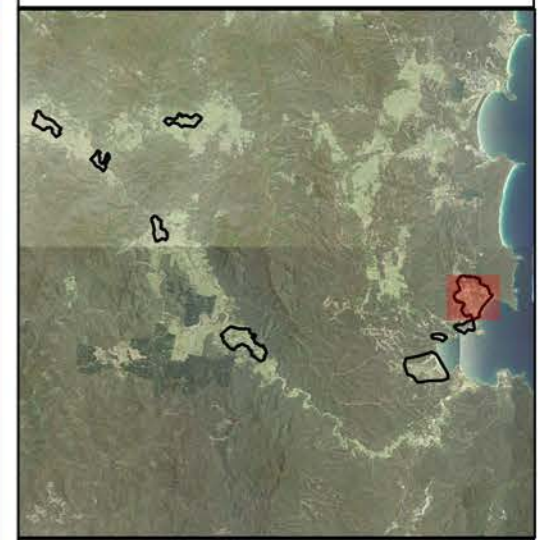
Scale : 1:12500 @A3
Date : 18 June 2019
Revision : A
Created by : LRE
Coordinate System : MGA94 Zone 55



G516-f
Eden - North
ARR87 Differences



- Model Area
- Difference (m)
ARR2016 less ARR87
- <= -1
- -1 - -0.5
- -0.5 - -0.25
- -0.25 - -0.01
- -0.01 - 0.01
- 0.01 - 0.25
- 0.25 - 0.5
- 0.5 - 1
- > 1



Scale : 1:12500 @A3
Date : 18 June 2019
Revision : A
Created by : LRE
Coordinate System : MGA94 Zone 55



G516-g
Eden - South
ARR87 Differences



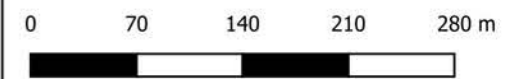
□ Model Area

Difference (m)
ARR2016 less ARR87

- <= -1
- 1 - -0.5
- 0.5 - -0.25
- 0.25 - -0.01
- 0.01 - 0.01
- 0.01 - 0.25
- 0.25 - 0.5
- 0.5 - 1
- > 1

Cattle Bay Road

Ida Rodd Drive







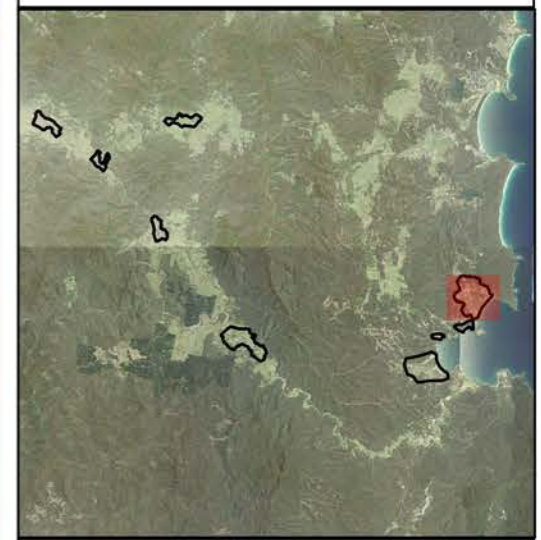
Scale : 1:5000 @A3
Date : 18 June 2019
Revision : A
Created by : LRE
Coordinate System : MGA94 Zone 55



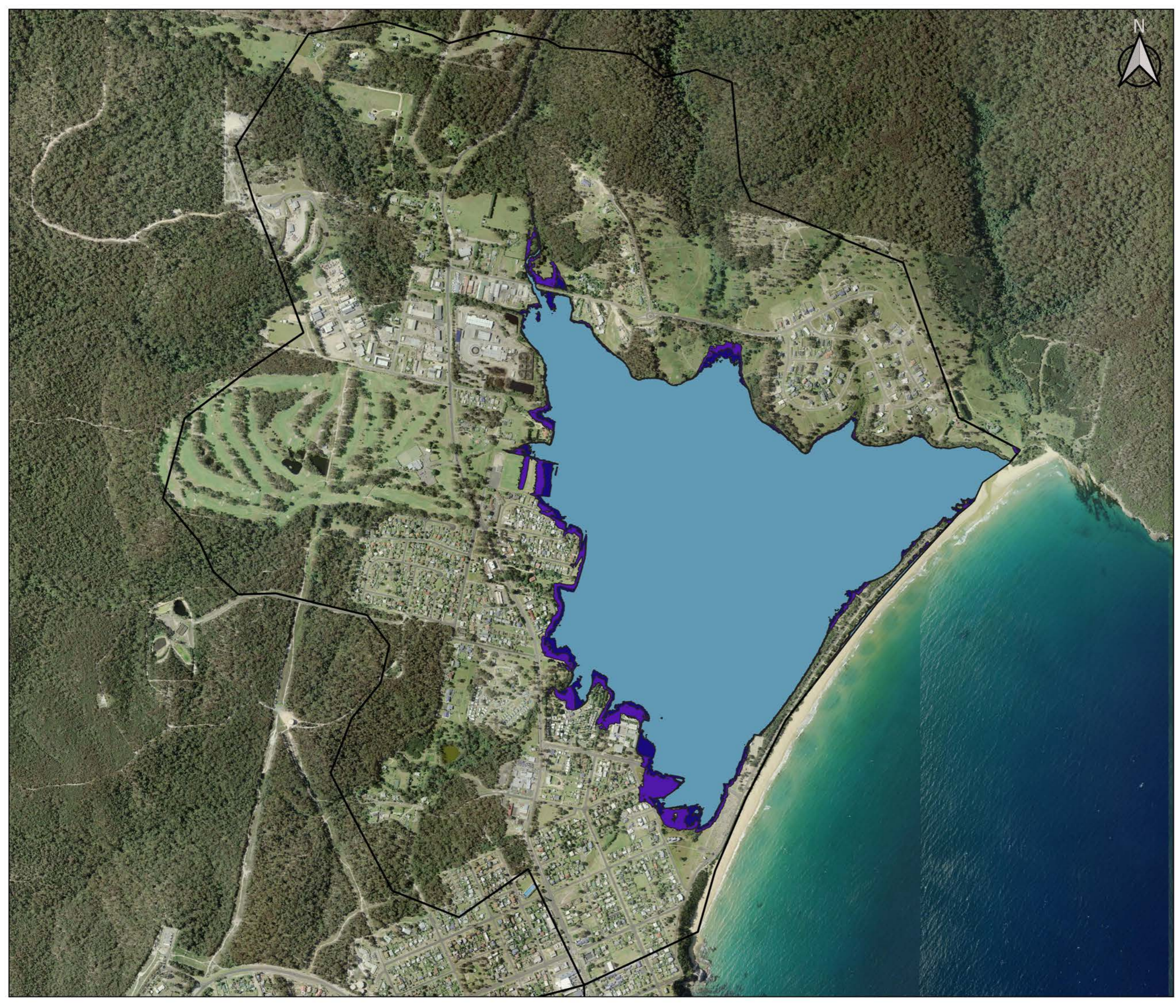
G517-f
Eden - North
Sea Level Rise Impacts



-  Model Area
-  Existing Extent
-  0.4m SLR Extent
-  0.9m SLR Extent







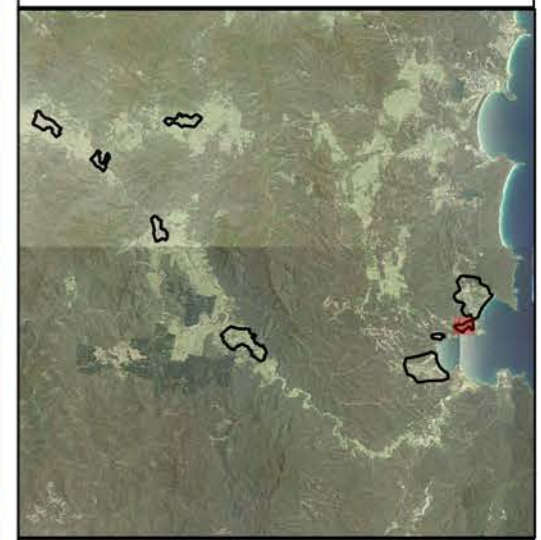
Scale : 1:12500 @A3
Date : 18 June 2019
Revision : A
Created by : LRE
Coordinate System : MGA94 Zone 55



G517-g
Eden - South
Sea Level Rise Impacts



-  Model Area
-  Existing Extent
-  0.4m SLR Extent
-  0.9m SLR Extent







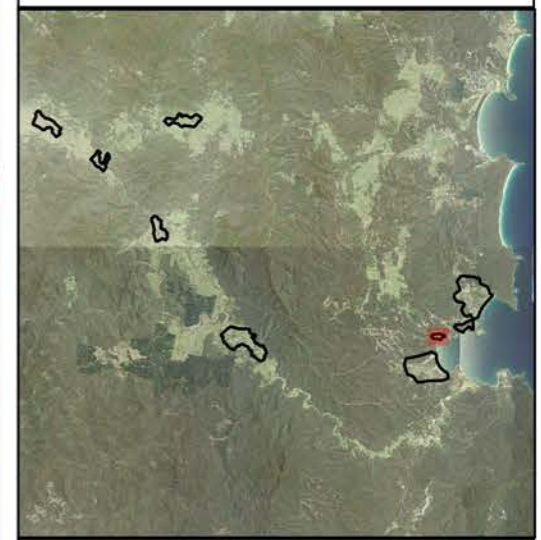
Scale : 1:5000 @A3
Date : 18 June 2019
Revision : A
Created by : LRE
Coordinate System : MGA94 Zone 55



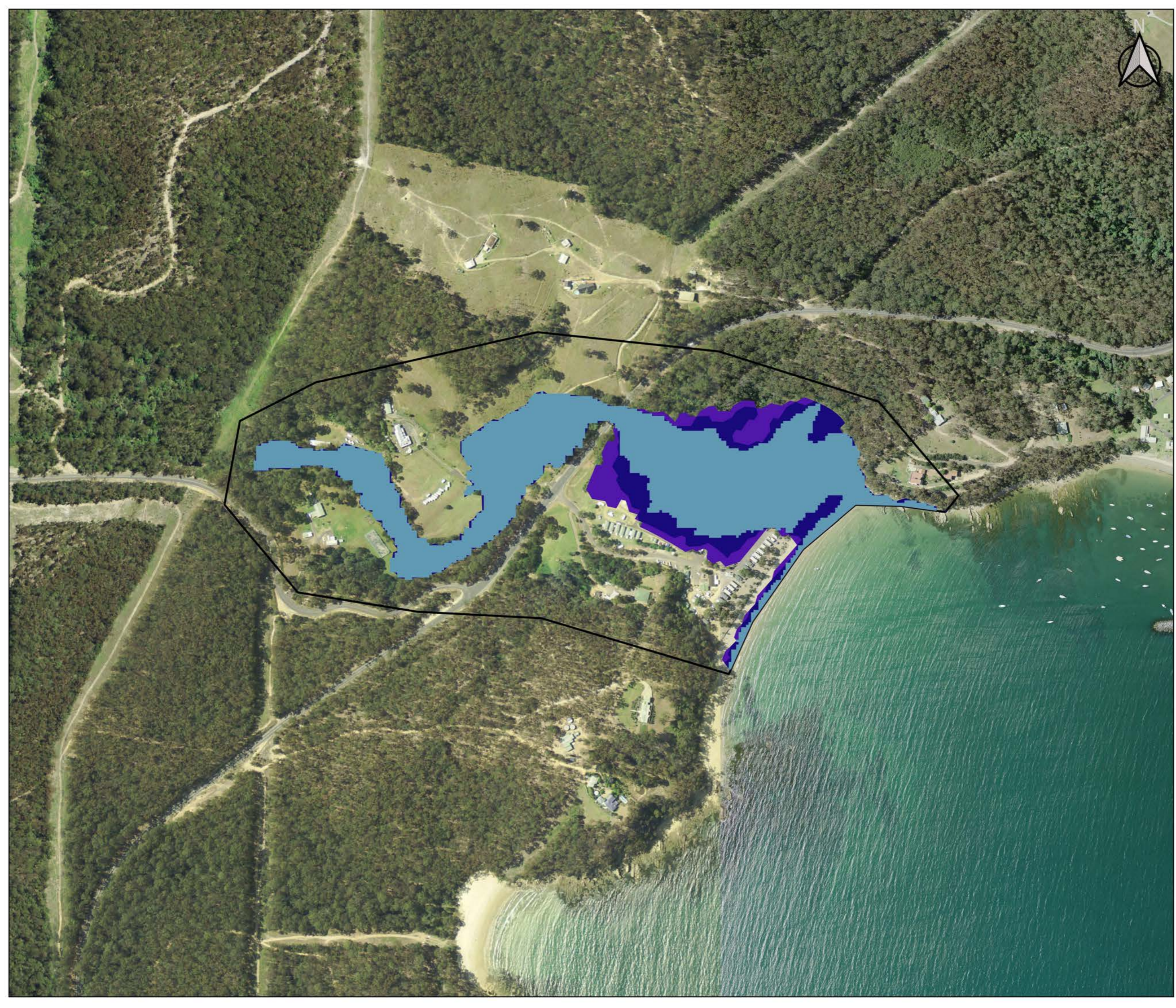
G517-h
Shadrachs
Sea Level Rise Impacts



-  Model Area
-  Existing Extent
-  0.4m SLR Extent
-  0.9m SLR Extent







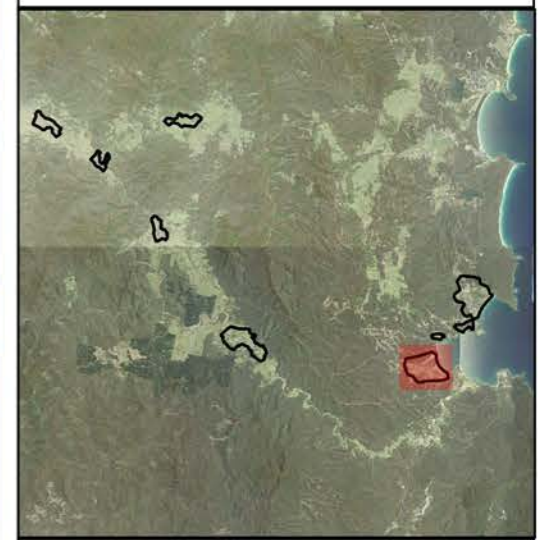
Scale : 1:5000 @A3
Date : 18 June 2019
Revision : A
Created by : LRE
Coordinate System : MGA94 Zone 55



G517-i
Nullica / Boydton
Sea Level Rise Impacts



-  Model Area
-  Existing Extent
-  0.4m SLR Extent
-  0.9m SLR Extent



Scale : 1:12500 @A3
Date : 18 June 2019
Revision : A
Created by : LRE
Coordinate System : MGA94 Zone 55

