

LEGEND

- 1% AEP Inundation Extent for Existing Conditions
 - 1% AEP Inundation Extent with 0.9m Sea Level Rise and 41% Rainfall Increases
- Depths (m)
- 0.1 to 0.5
 - 0.5 to 1.0
 - 1.0 to 2.0
 - 2.0 to 5.0
 - > 5

Notes:
Aerial photograph: Google Satellite 2019
Only areas subject to inundation depths of more than 0.1 metres are displayed

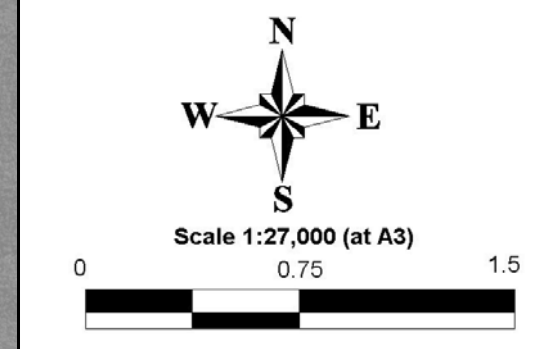
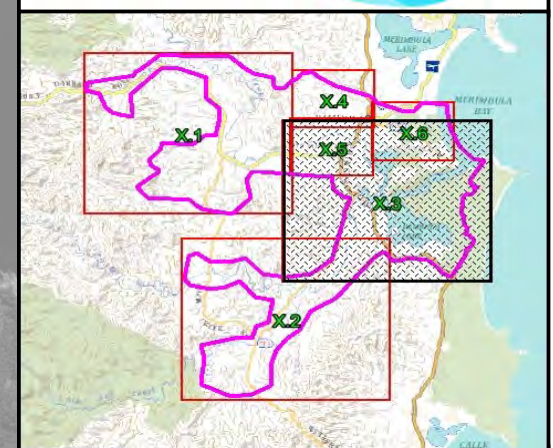
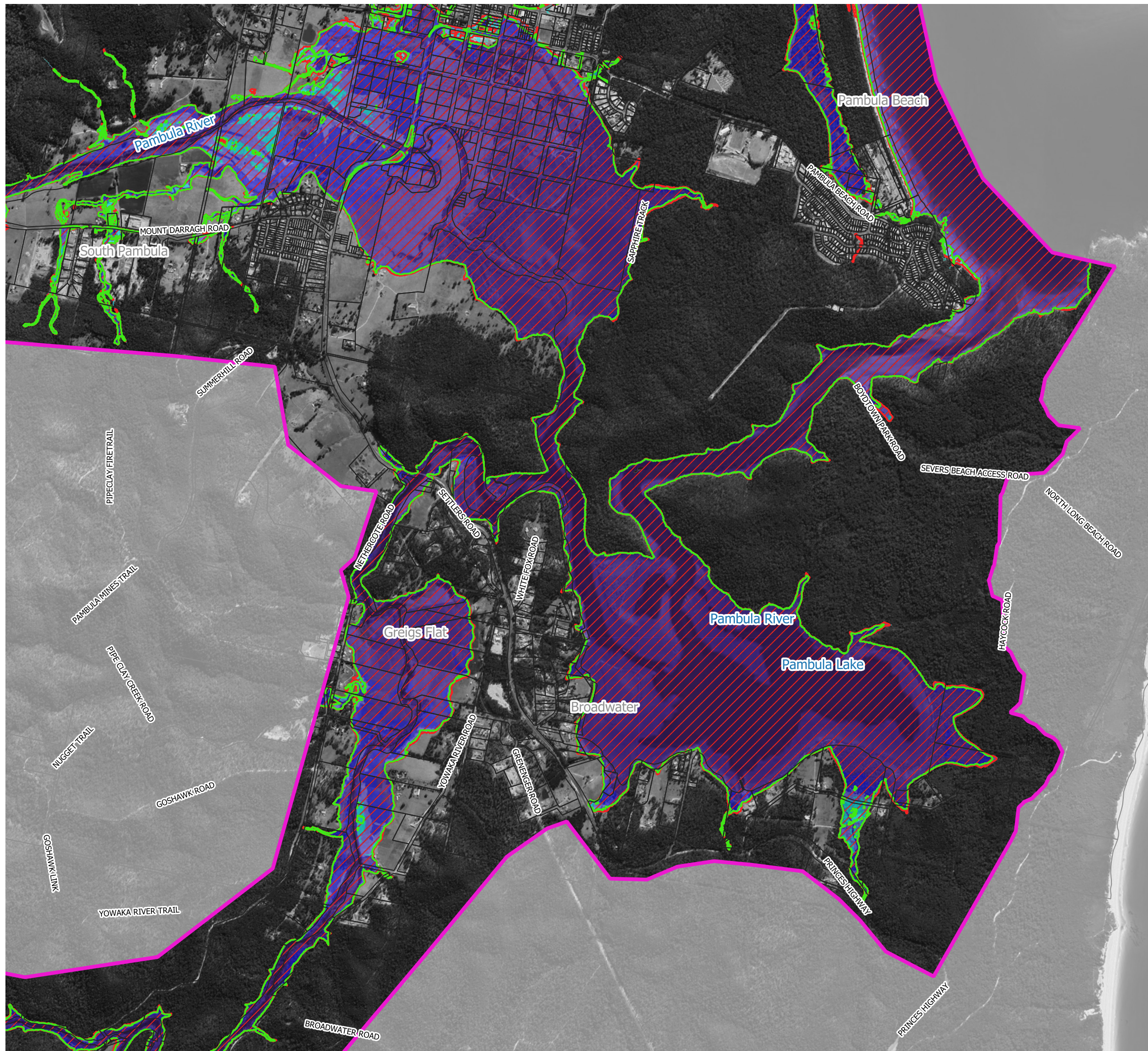


Figure 59.2
Peak 1% AEP Water Depths
with 41% Rainfall Increases and
0.9m Sea Level Rise and
0.9m Increase in River
Entrance Elevation

Prepared By:
Catchment Simulation Solutions
Suite 10.01, 70 Phillip St
Sydney, NSW 2000

File Name: Figure 59 Peak 1% AEP Water Depths with 41% Rainfall Increases and 0.9m Sea Level Rise and 0.9m Increase in River Entrance Elevation



LEGEND

- 1% AEP Inundation Extent for Existing Conditions
 - 1% AEP Inundation Extent with 0.9m Sea Level Rise and 41% Rainfall Increases
- Depths (m)
- 0.1 to 0.5
 - 0.5 to 1.0
 - 1.0 to 2.0
 - 2.0 to 5.0
 - > 5

Notes:
Aerial photograph: Google Satellite 2019
Only areas subject to inundation depths of more than 0.1 metres are displayed

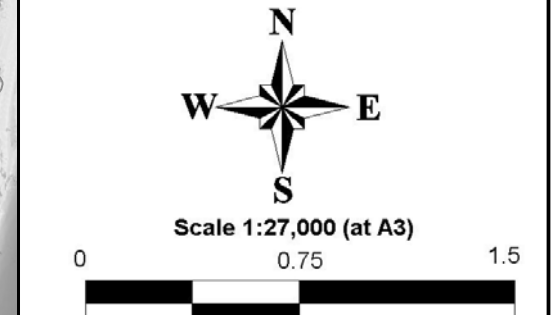

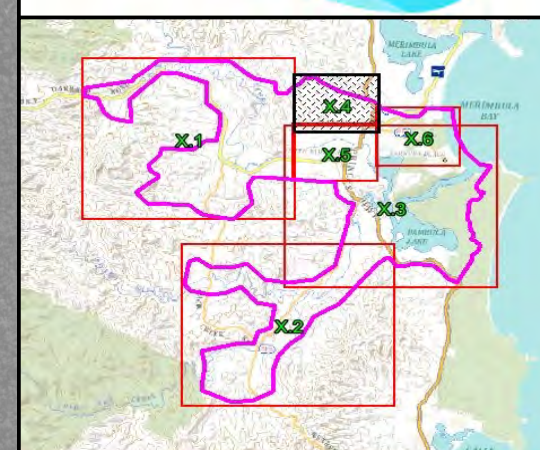
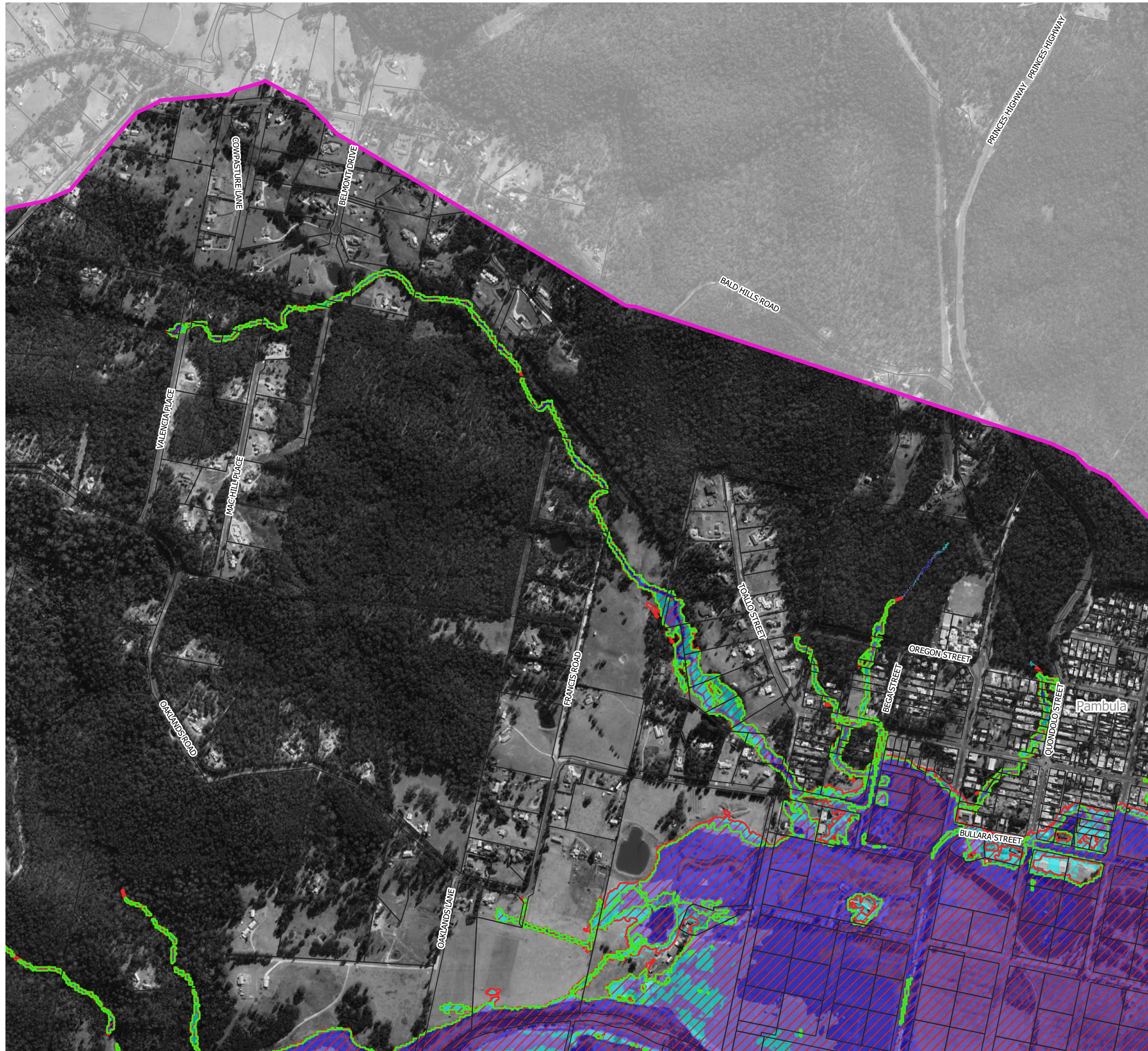


Figure 59.3
Peak 1% AEP Water Depths
with 41% Rainfall Increases and
0.9m Sea Level Rise and
0.9m Increase in River
Entrance Elevation

Prepared By:
 **Catchment Simulation Solutions**
Suite 10.01, 70 Phillip St
Sydney, NSW 2000

File Name: Figure 59 Peak 1% AEP Water Depths with 41% Rainfall Increases and 0.9m Sea Level Rise and 0.9m Increase in River Entrance Elevation



LEGEND

1% AEP Inundation Extent for Existing Conditions

1% AEP Inundation Extent with 0.9m Sea Level Rise and 41% Rainfall Increases

Depths (m)

0.1 to 0.5

0.5 to 1.0

1.0 to 2.0

2.0 to 5.0

> 5

Notes:

Aerial photograph: Google Satellite 2019

Only areas subject to inundation depths of more than 0.1 metres are displayed

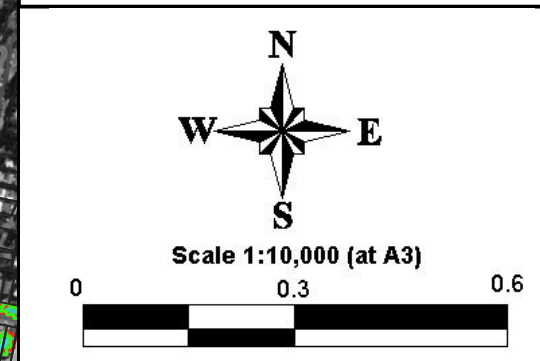


Figure 59.4

Peak 1% AEP Water Depths with 41% Rainfall Increases and 0.9m Sea Level Rise and 0.9m Increase in River Entrance Elevation

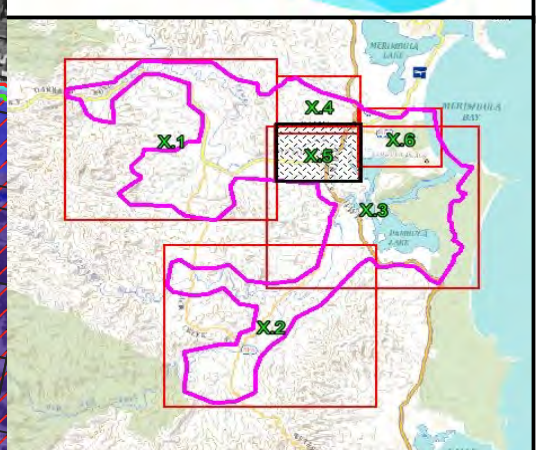
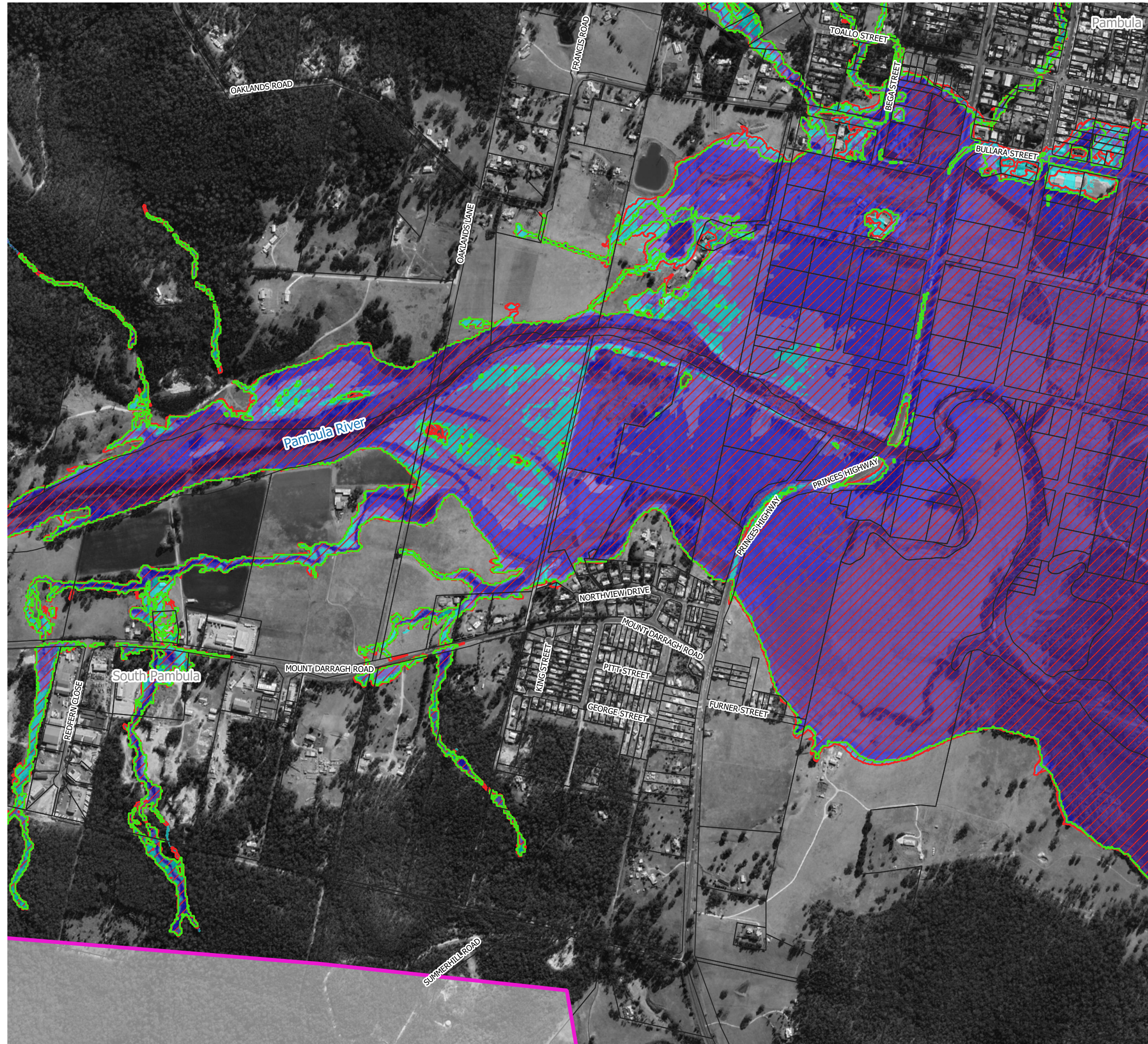
Prepared By:

Catchment Simulation Solutions

Suite 10.01, 70 Phillip St

Sydney, NSW 2000

File Name: Figure 59 Peak 1% AEP Water Depths with 41% Rainfall Increases and 0.9m Sea Level Rise and 0.9m Increase in River Entrance Elevation



LEGEND

1% AEP Inundation Extent for Existing Conditions

1% AEP Inundation Extent with 0.9m Sea Level Rise and 41% Rainfall Increases

Depths (m)

	0.1 to 0.5
	0.5 to 1.0
	1.0 to 2.0
	2.0 to 5.0
	> 5

Notes:
Aerial photograph: Google Satellite 2019
Only areas subject to inundation depths of more than 0.1 metres are displayed

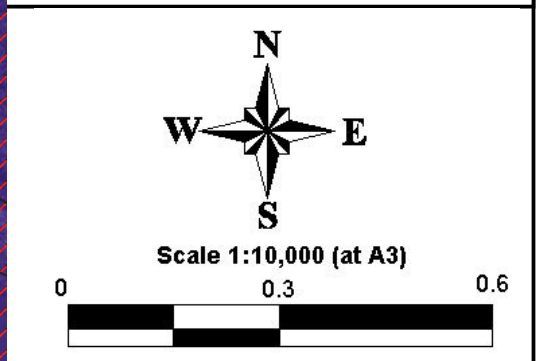
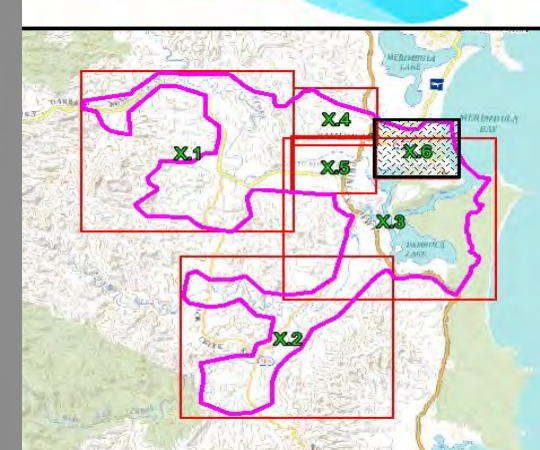
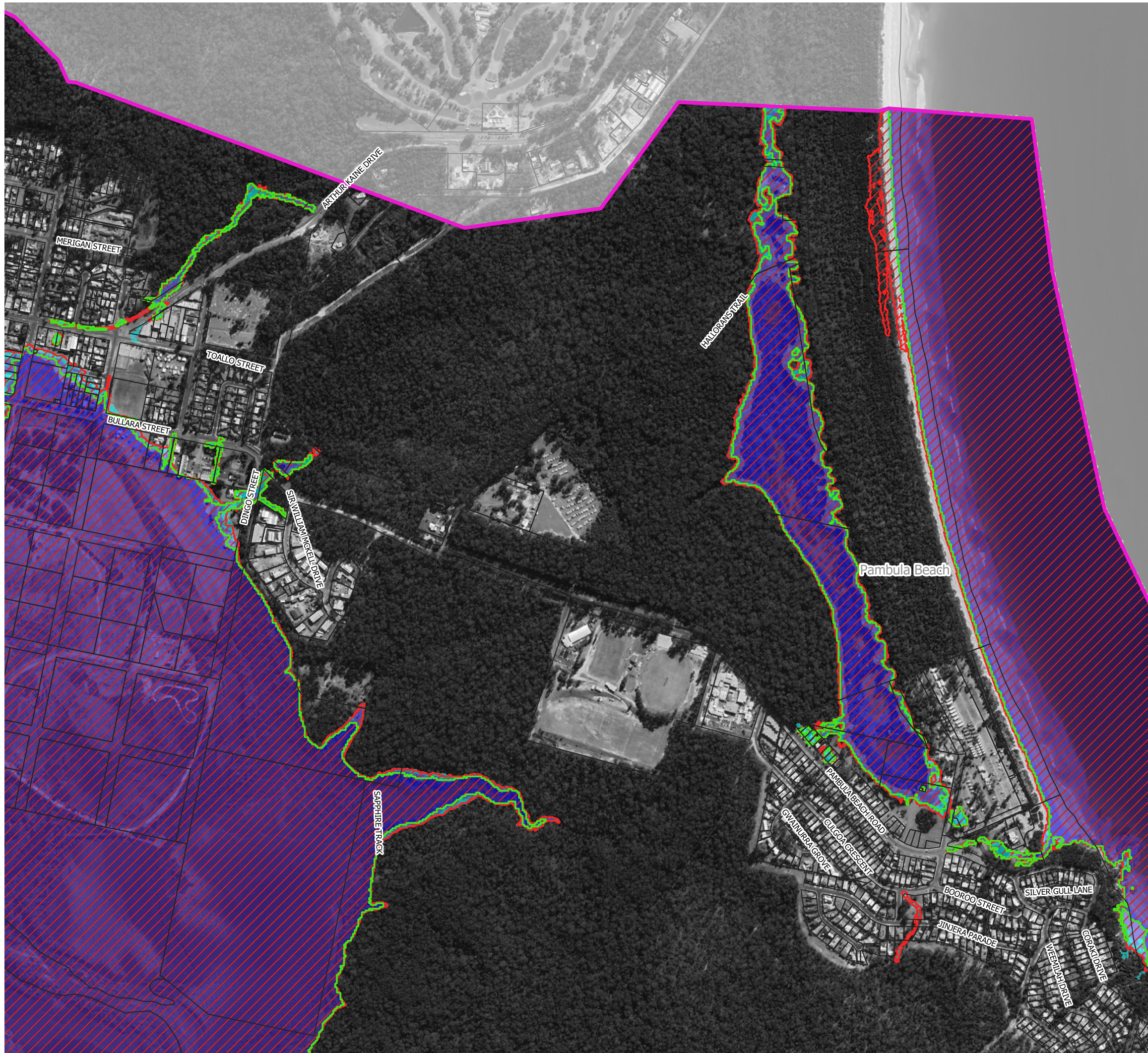


Figure 59.5
Peak 1% AEP Water Depths
with 41% Rainfall Increases and
0.9m Sea Level Rise and
0.9m Increase in River
Entrance Elevation

Prepared By:
 Catchment Simulation Solutions
Suite 10.01, 70 Phillip St
Sydney, NSW 2000

File Name: Figure 59 Peak 1% AEP Water Depths with 41% Rainfall Increases and 0.9m Sea Level Rise and 0.9m Increase in River Entrance Elevation



LEGEND

- 1% AEP Inundation Extent for Existing Conditions
 - 1% AEP Inundation Extent with 0.9m Sea Level Rise and 41% Rainfall Increases
- Depths (m)
- 0.1 to 0.5
 - 0.5 to 1.0
 - 1.0 to 2.0
 - 2.0 to 5.0
 - > 5

Notes:
Aerial photograph: Google Satellite 2019
Only areas subject to inundation depths of more than 0.1 metres are displayed

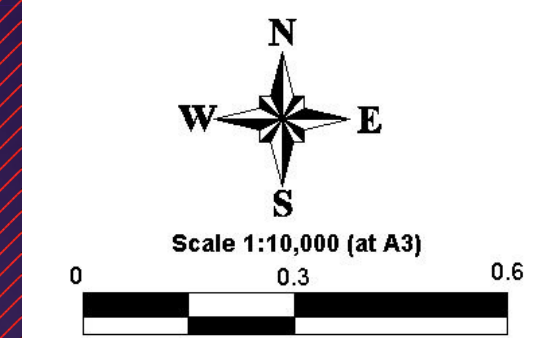


Figure 59.6
Peak 1% AEP Water Depths
with 41% Rainfall Increases and
0.9m Sea Level Rise and
0.9m Increase in River
Entrance Elevation

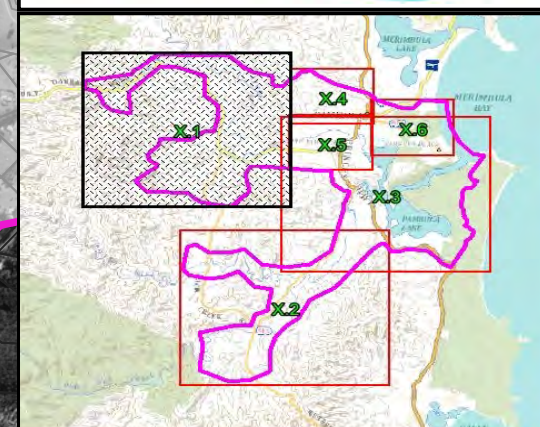
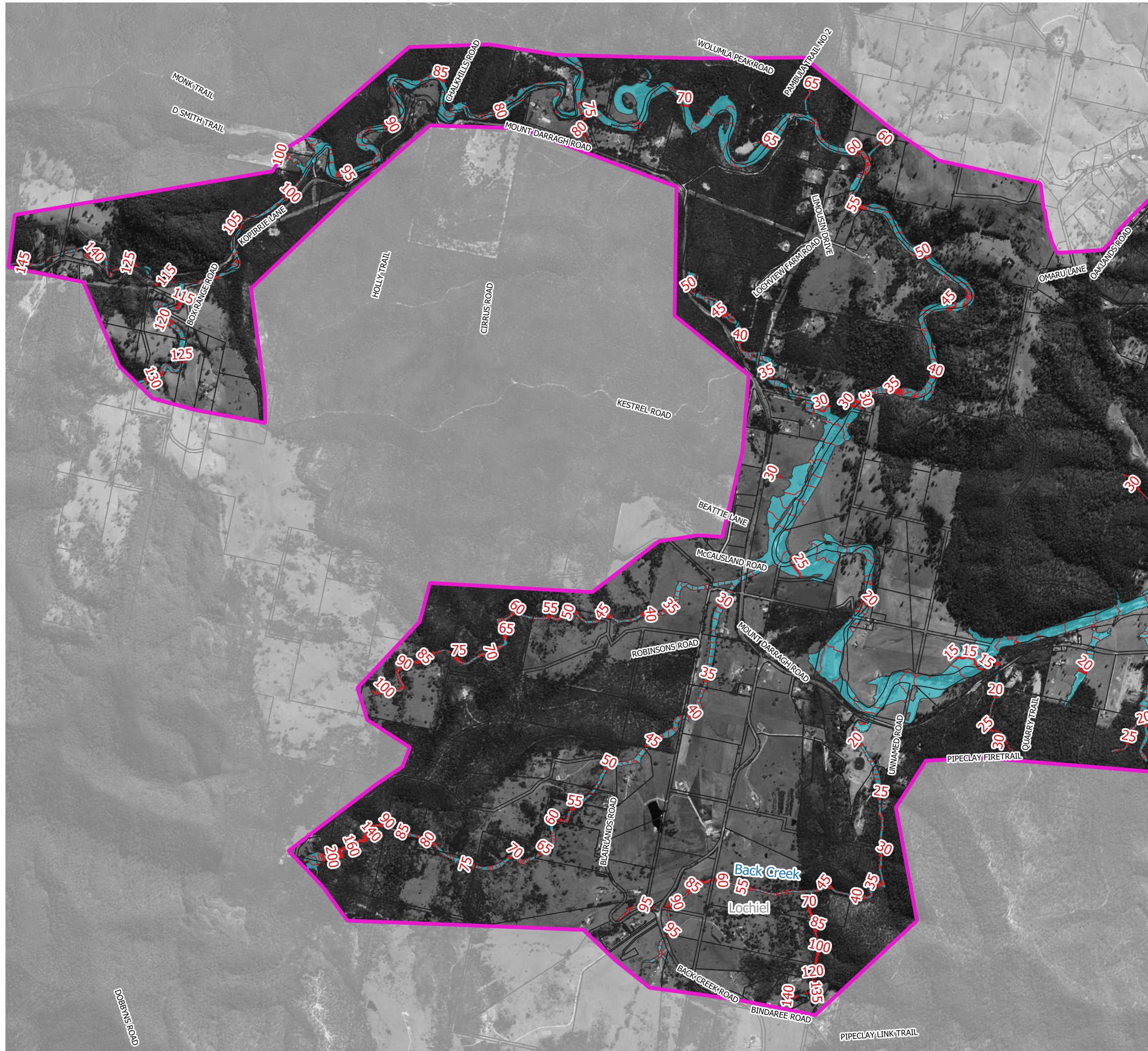
Prepared By:
Catchment Simulation Solutions
Suite 10.01, 70 Phillip St
Sydney, NSW 2000

File Name: Figure 59 Peak 1% AEP Water Depths with 41% Rainfall Increases and 0.9m Sea Level Rise and 0.9m Increase in River Entrance Elevation



FLOOD PLANNING MAPS

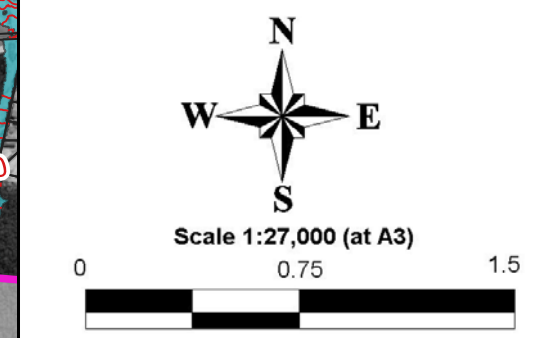




LEGEND

- 60 Peak Flood Planning Level Contour (5m interval) (mAHD)
- Peak Flood Planning Level Contour (0.5m interval)
- 60 Flood Planning Level Point (mAHD)
- Flood Planning Area

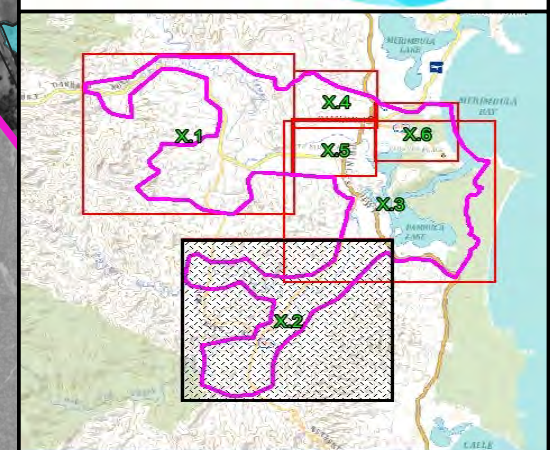
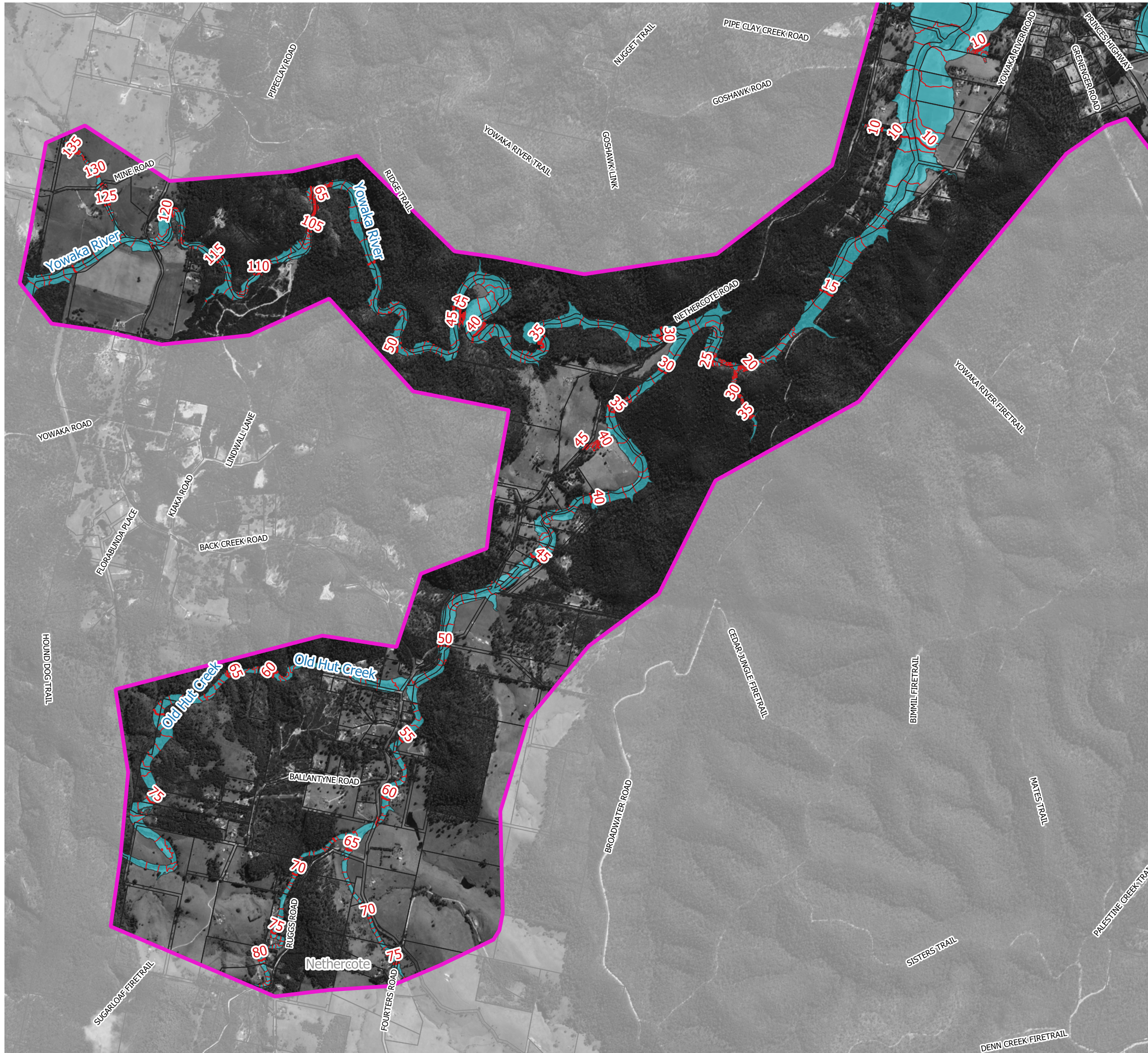
Notes:
Flood Planning Area is based on the 1% AEP flood with 0.9 metre increase in ocean level plus 0.5 metre freeboard.
Aerial photograph: Google Satellite 2019.
Only areas subject to inundation depths of more than 0.1 metres are displayed.



**Figure 60.1
Flood Planning Area**

Prepared By:
Catchment Simulation Solutions
Suite 10.01, 70 Phillip St
Sydney, NSW 2000

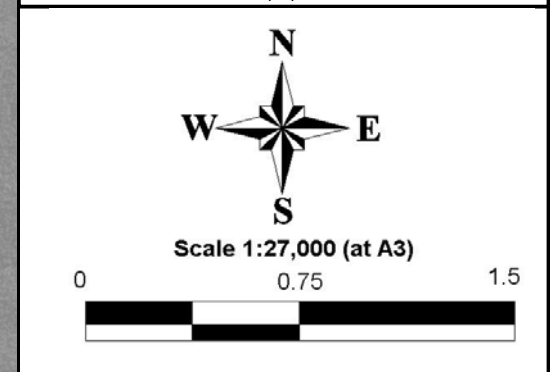
File Name: Figure 60 Flood Planning Area



LEGEND

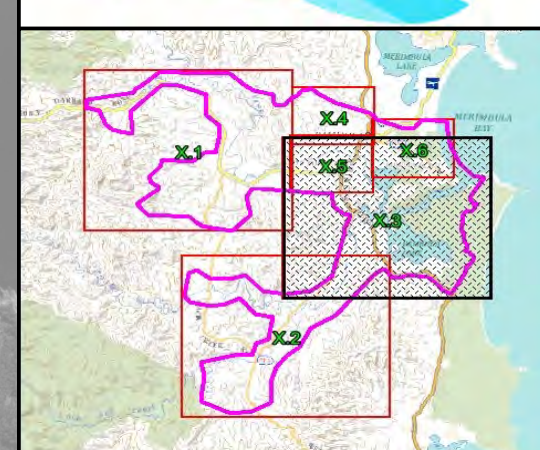
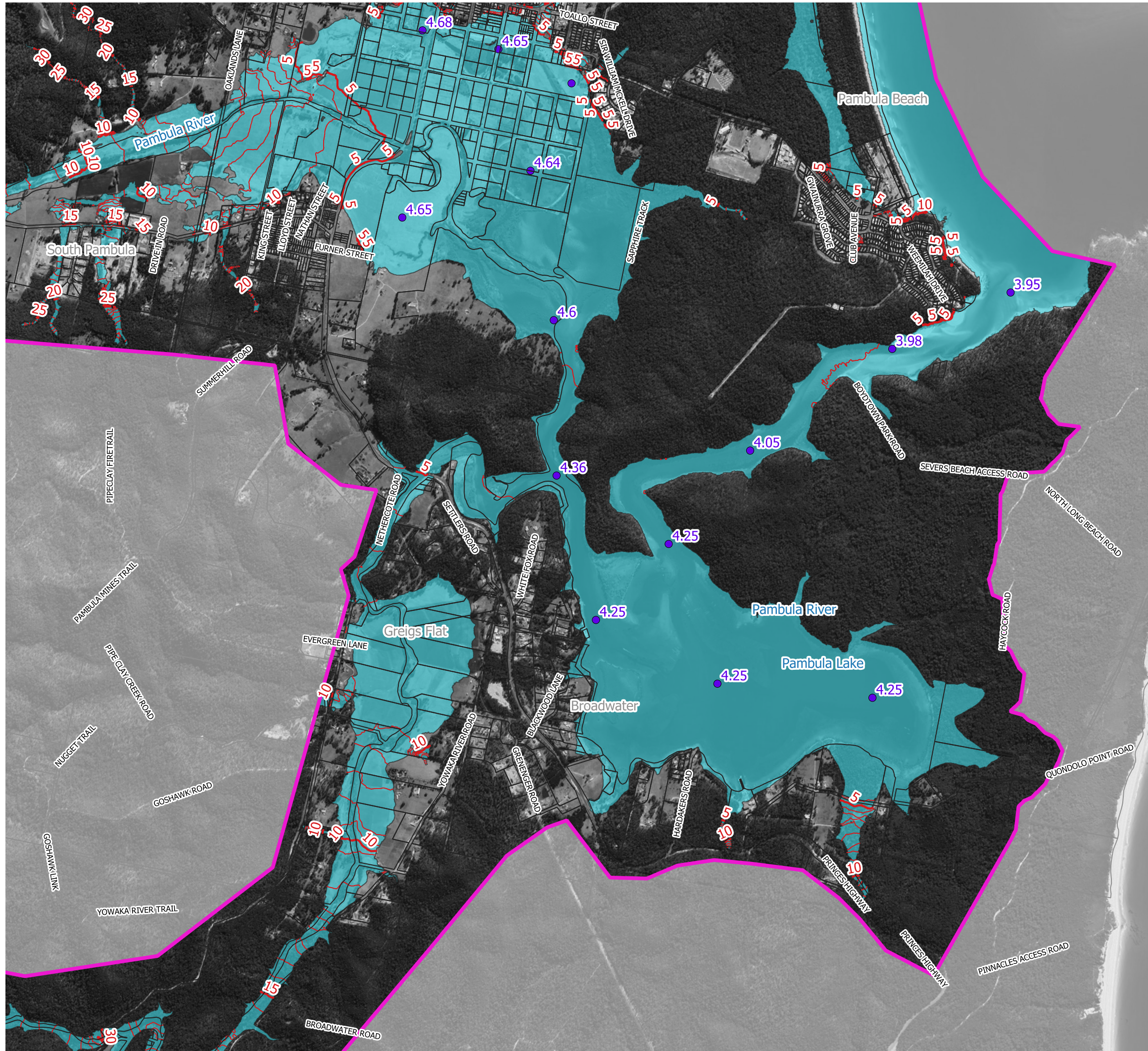
- Peak Flood Planning Level Contour (5m interval) (mAHD)
- Peak Flood Planning Level Contour (0.5m interval)
- Flood Planning Level Point (mAHD)
- Flood Planning Area

Notes:
Flood Planning Area is based on the 1% AEP flood with 0.9 metre increase in ocean level plus 0.5 metre freeboard.
Aerial photograph: Google Satellite 2019.
Only areas subject to inundation depths of more than 0.1 metres are displayed.



**Figure 60.2
Flood Planning Area**

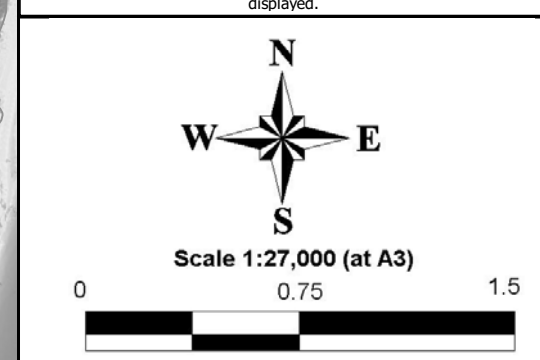
Prepared By:
 Catchment Simulation Solutions
Suite 10.01, 70 Phillip St
Sydney, NSW 2000
File Name: Figure 60 Flood Planning Area




LEGEND

- 60 Peak Flood Planning Level Contour (5m interval) (mAHD)
- Peak Flood Planning Level Contour (0.5m interval)
- 60 Flood Planning Level Point (mAHD)
- Flood Planning Area

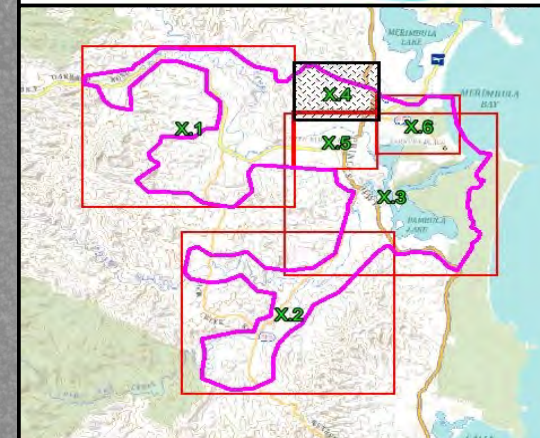
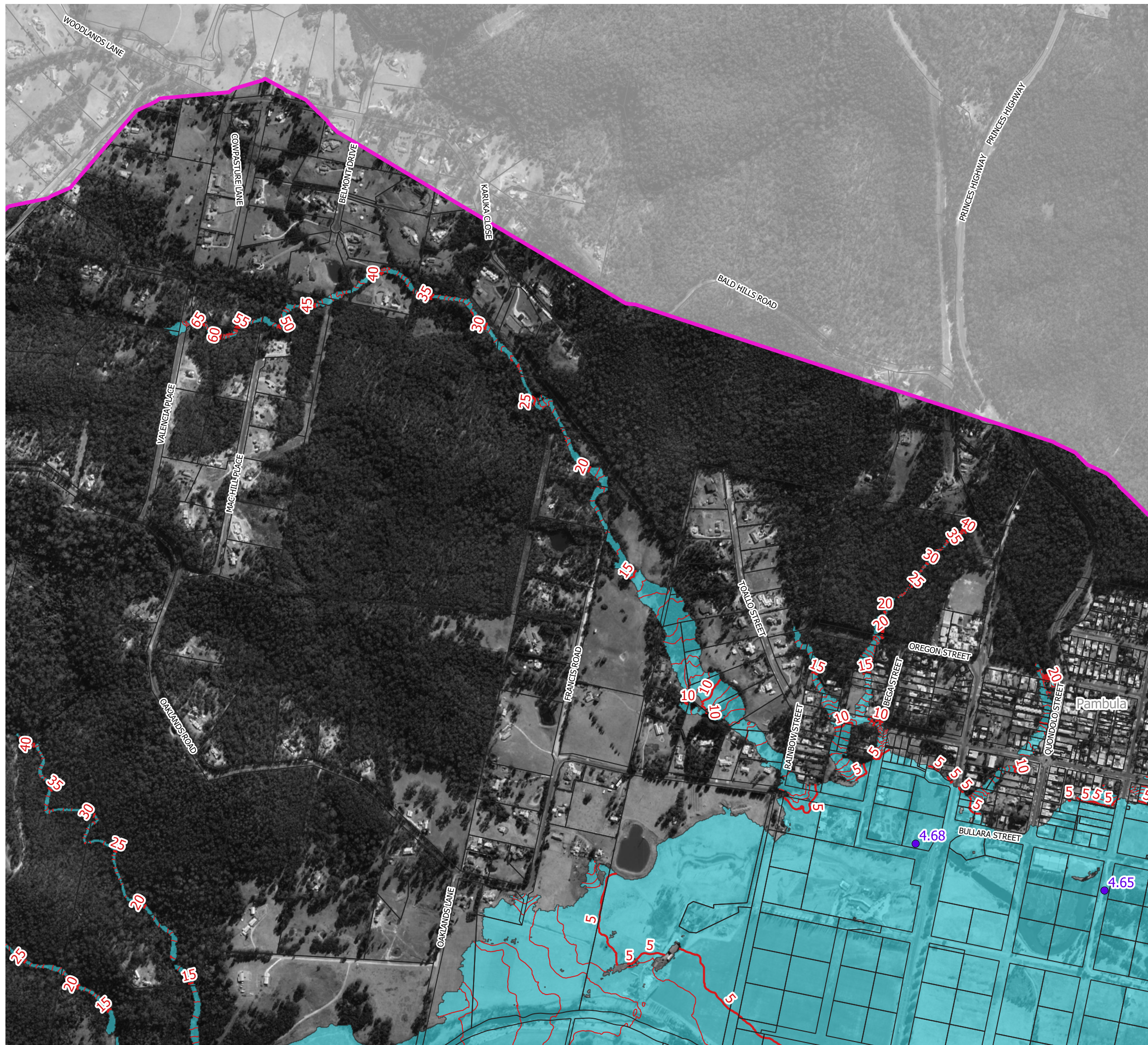
Notes:
Flood Planning Area is based on the 1% AEP flood with 0.9 metre increase in ocean level plus 0.5 metre freeboard.
Aerial photograph: Google Satellite 2019.
Only areas subject to inundation depths of more than 0.1 metres are displayed.



**Figure 60.3
Flood Planning Area**

Prepared By:
 **Catchment Simulation Solutions**
Suite 10.01, 70 Phillip St
Sydney, NSW 2000

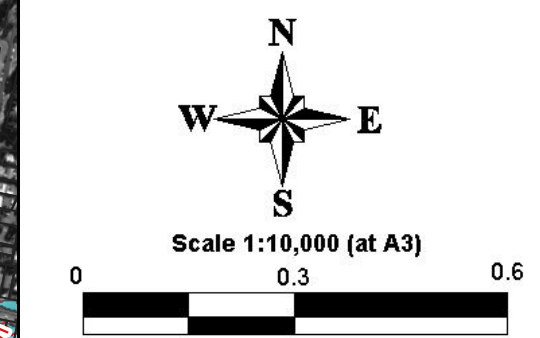
File Name: Figure 60 Flood Planning Area



LEGEND

- 60 Peak Flood Planning Level Contour (5m interval) (mAHD)
- Peak Flood Planning Level Contour (0.5m interval)
- 60 Flood Planning Level Point (mAHD)
- Flood Planning Area

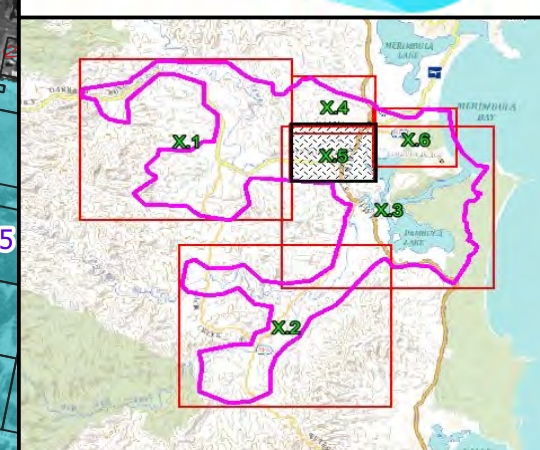
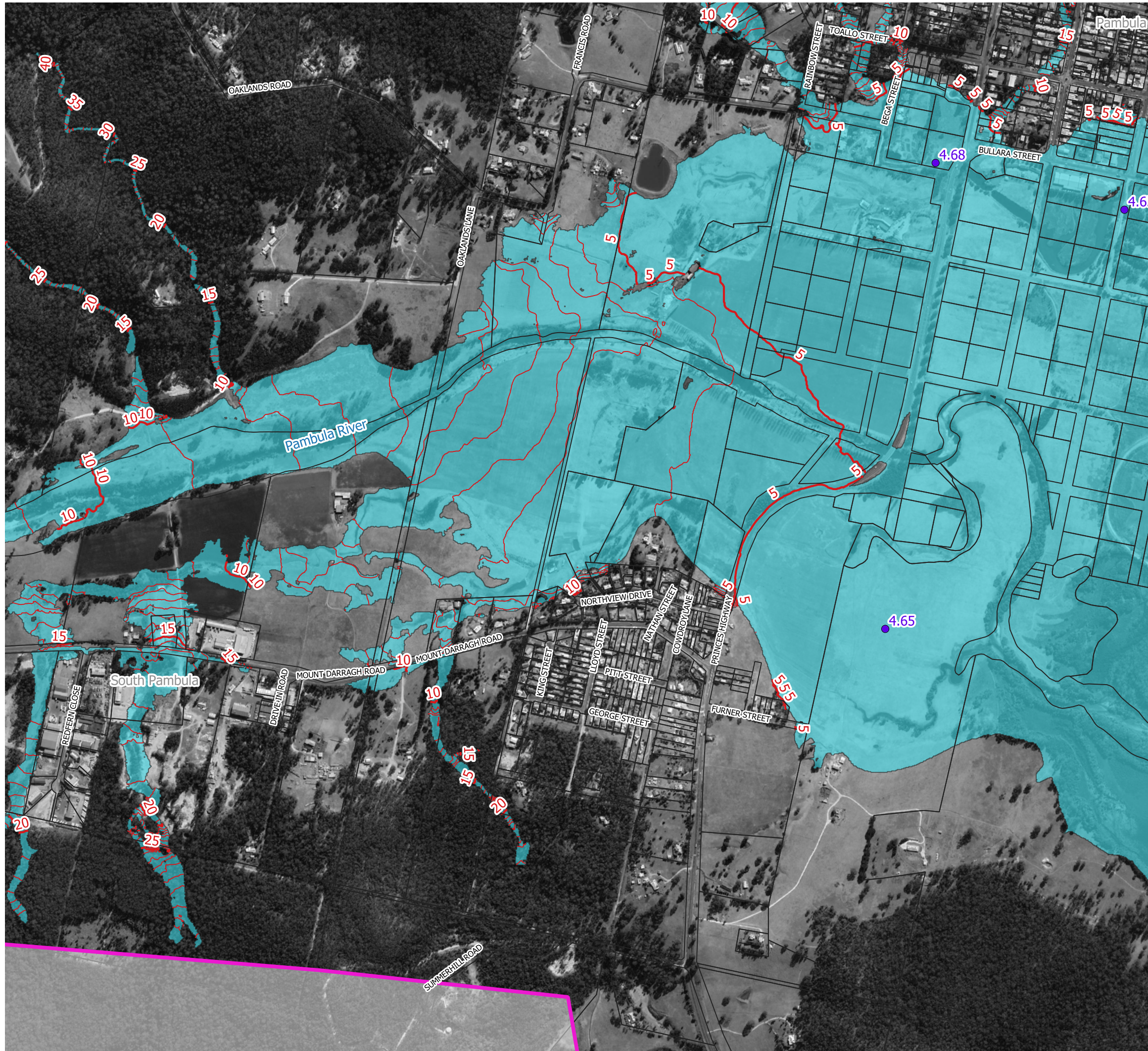
Notes:
Flood Planning Area is based on the 1% AEP flood with 0.9 metre increase in ocean level plus 0.5 metre freeboard.
Aerial photograph: Google Satellite 2019.
Only areas subject to inundation depths of more than 0.1 metres are displayed.



**Figure 60.4
Flood Planning Area**

Prepared By:
Catchment Simulation Solutions
Suite 10.01, 70 Phillip St
Sydney, NSW 2000

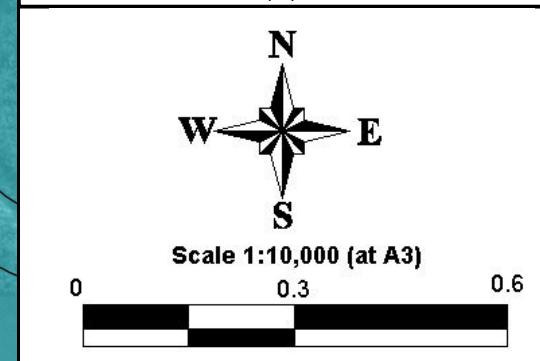
File Name: Figure 60 Flood Planning Area



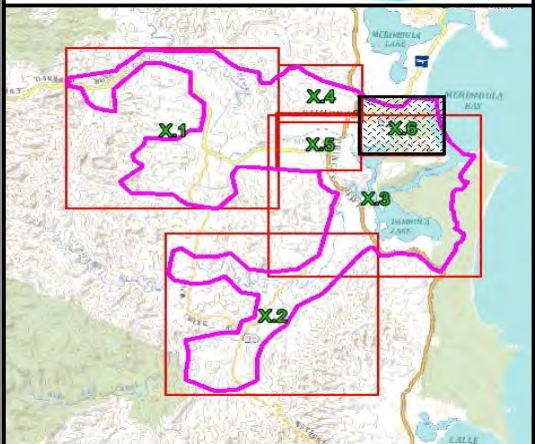
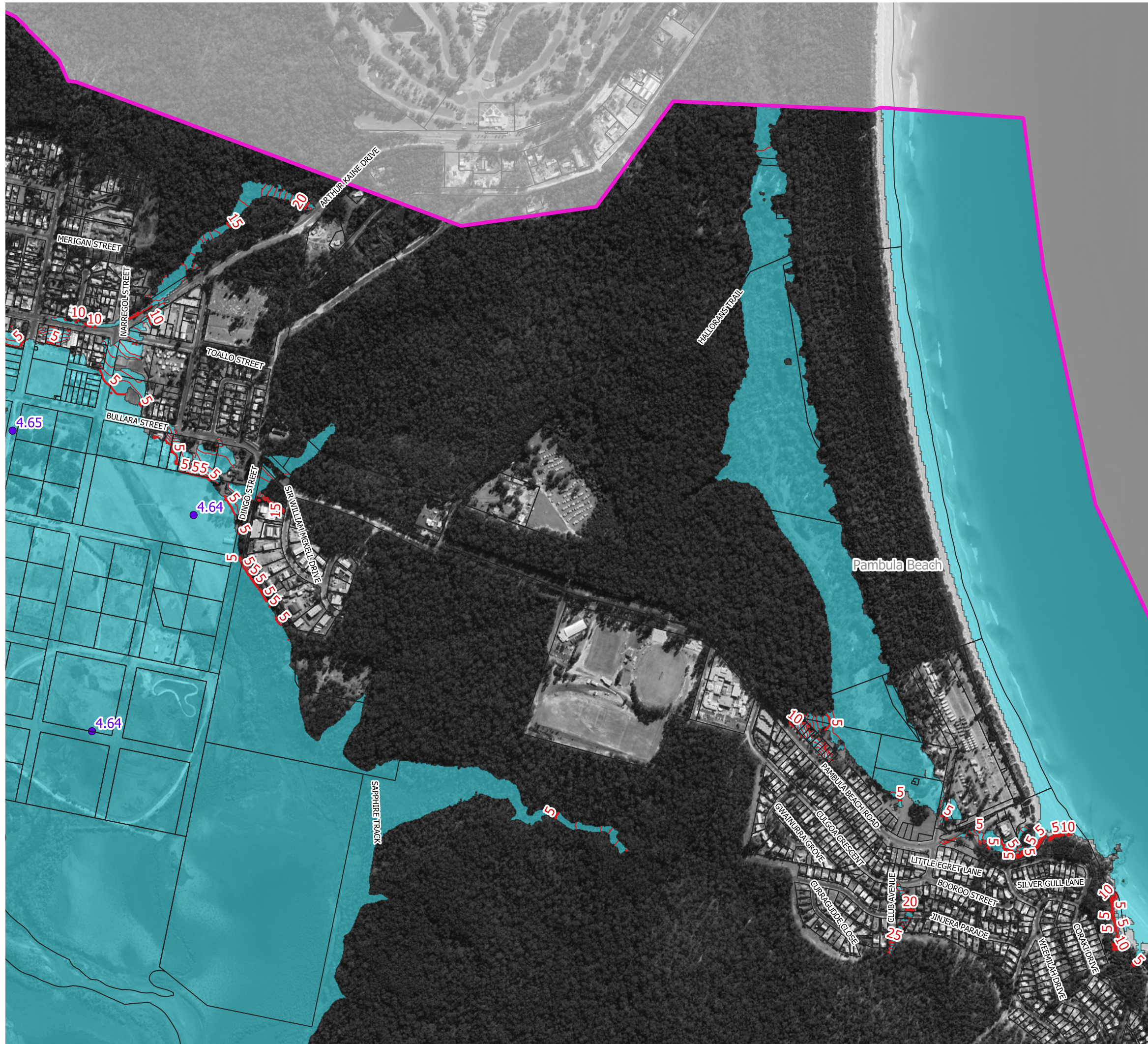
LEGEND

- Peak Flood Planning Level Contour (5m interval) (mAHD)
- Peak Flood Planning Level Contour (0.5m interval)
- Flood Planning Level Point (mAHD)
- Flood Planning Area

Notes:
Flood Planning Area is based on the 1% AEP flood with 0.9 metre increase in ocean level plus 0.5 metre freeboard.
 Aerial photograph: Google Satellite 2019.
 Only areas subject to inundation depths of more than 0.1 metres are displayed.



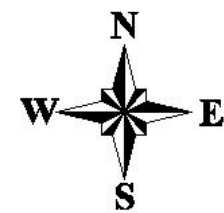
**Figure 60.5
 Flood Planning Area**



LEGEND

- 60 Peak Flood Planning Level Contour (5m interval) (mAHD)
- Peak Flood Planning Level Contour (0.5m interval)
- 60 Flood Planning Level Point (mAHD)
- Flood Planning Area

Notes:
Flood Planning Area is based on the 1% AEP flood with 0.9 metre increase in ocean level plus 0.5 metre freeboard.
Aerial photograph: Google Satellite 2019.
Only areas subject to inundation depths of more than 0.1 metres are displayed.



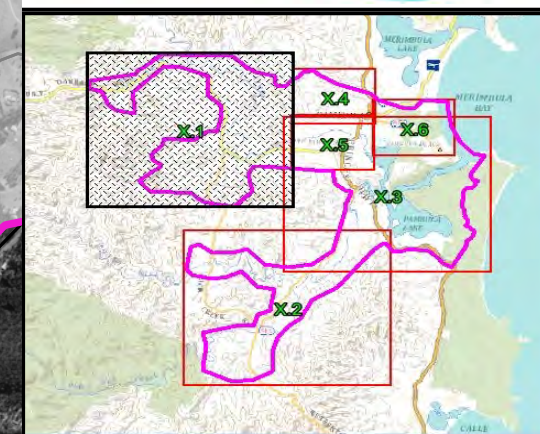
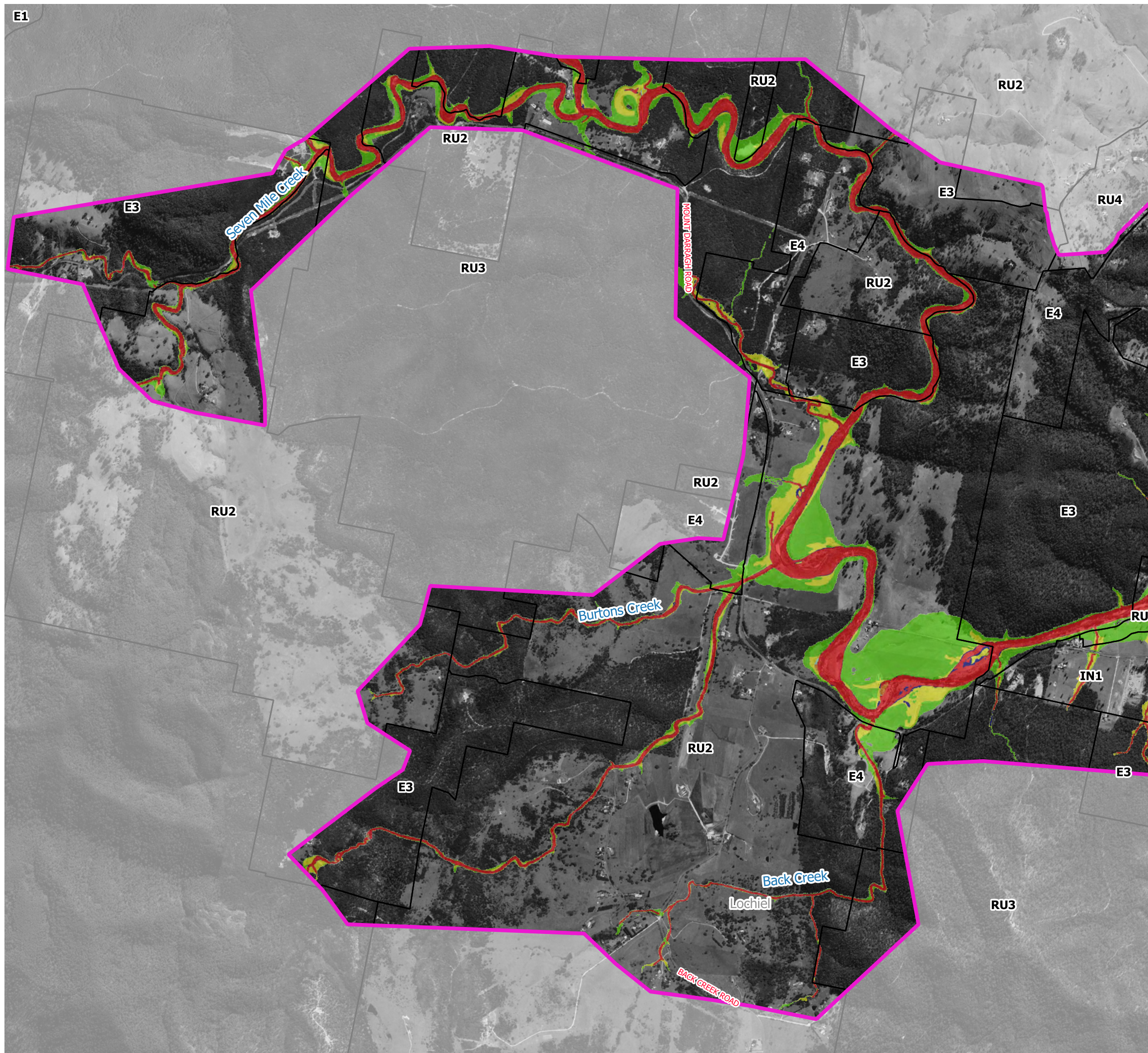
Scale 1:10,000 (at A3)



Figure 60.6
Flood Planning Area

Prepared By:
Catchment Simulation Solutions
Suite 10.01, 70 Phillip St
Sydney, NSW 2000

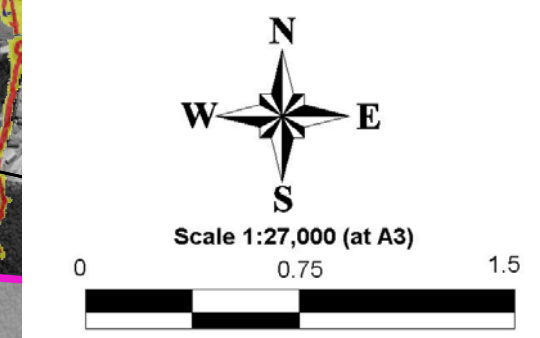
File Name: Figure 60 Flood Planning Area



LEGEND

- LEP Zones
- FPCC Category 1:
 - 1A: Flow conveyance and storage areas in the 1% AEP Flood
 - 1B: H6 Hazard in the 1% AEP Flood
- FPCC Category 2:
 - 2A: Flow conveyance in the 0.5% AEP Flood
 - 2B: Flood hazard H5 in the 1% AEP Flood
 - 2C: Emergency response-isolated and submerged areas
 - 2D: Emergency response-isolated but elevated areas
 - 2E: Flood hazard H6 in the 0.5% AEP Flood
- FPCC Category 3: Outside FPCC2-generally below the 1% AEP Flood and the freeboard
- FPCC Category 4: Outside FPCC3, but within the PMF

Notes:
Aerial photograph: Google Satellite 2019
Only areas subject to inundation depths of more than 0.1 metres are displayed



**Figure 61.1
Flood Planning
Constraints Mapping**