



**LEGEND
HYDRAULIC CATEGORY**

- Floodway
- Fringe
- Storage

DATE PLOTTED: 25/01/2017 BY: Luke Evans
FILE: N:\Projects\699\FY16\044_Bega & Brogo Rivers FRMS&P\Drawings\Workspaces\Figures

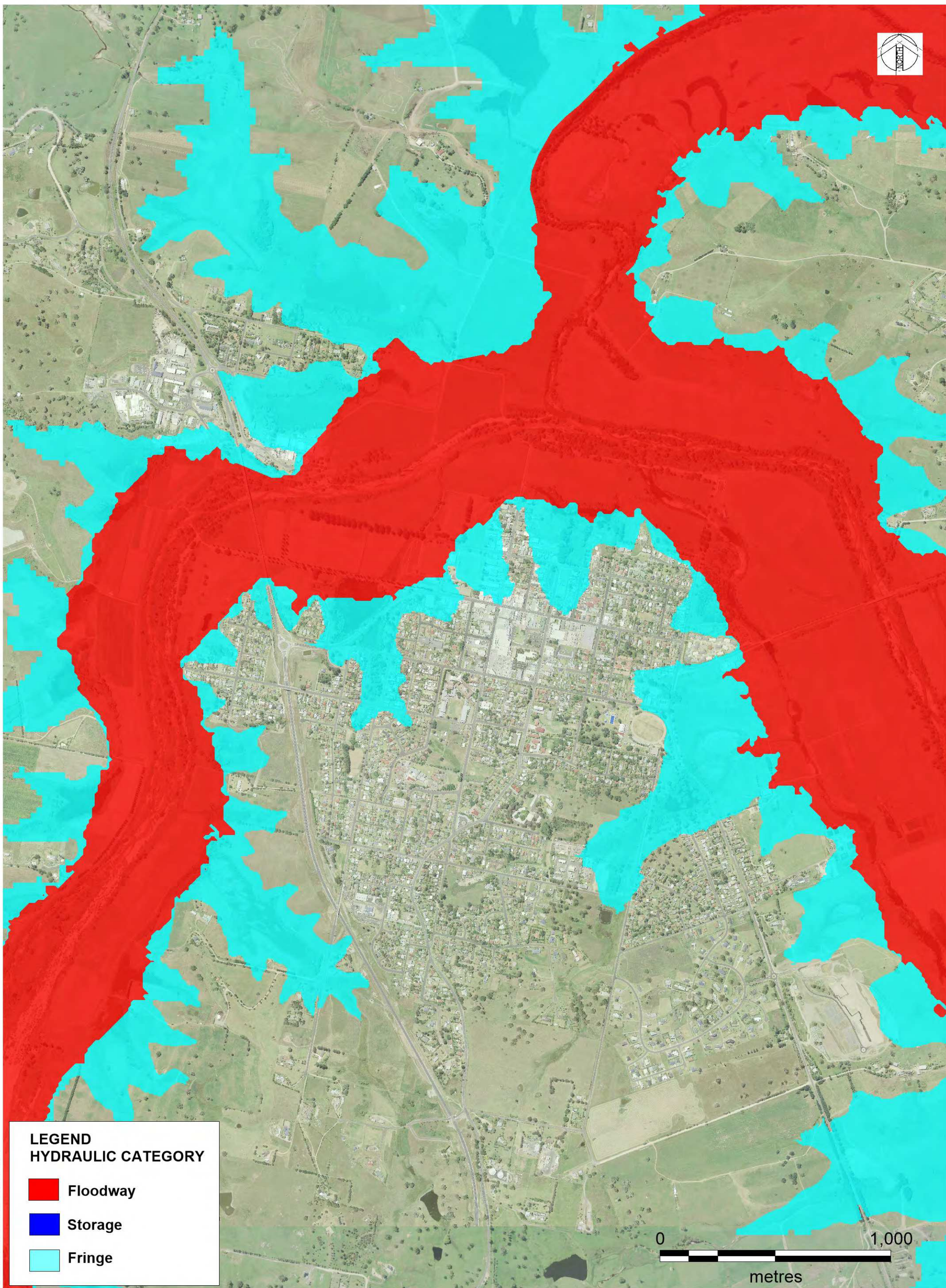


© Cardno Limited All Rights Reserved
This document is produced by Cardno Limited solely for the benefit of and use by the client in accordance with the terms of the retainer. Cardno Limited does not and shall not assume any responsibility or liability whatsoever to any third party arising out of any use or reliance by third party on the content of this document.

Date
17/5/2017
Size
A3

BEGA VALLEY SHIRE COUNCIL
BEGA AND BROGO FRMS&P
CANDELO INSET
1% AEP HYDRAULIC CATEGORIES

FIGURE 5.18A



**LEGEND
HYDRAULIC CATEGORY**

- Floodway
- Fringe
- Storage



DATE PLOTTED: 25/01/2017 BY: Luke Evans
FILE: N:\Projects\699\FY16\044_Bega & Brogo Rivers FRMS&P\Drawings\Workspace\Figures

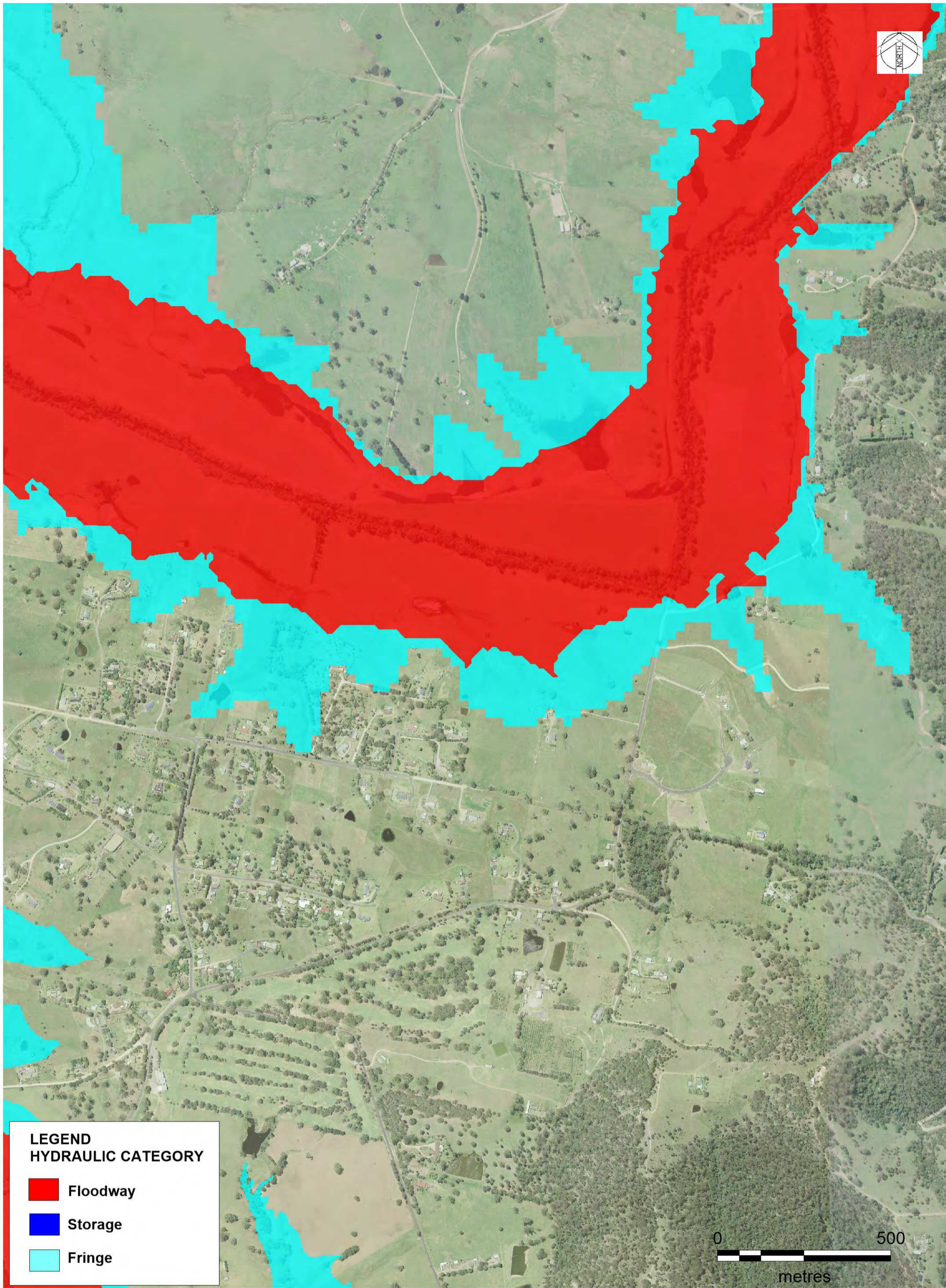


© Cardno Limited All Rights Reserved
This document is produced by Cardno Limited solely for the benefit of and use by the client in accordance with the terms of the retainer. Cardno Limited does not and shall not assume any responsibility or liability whatsoever to any third party arising out of any use or reliance by third party on the content of this document.

Date
17/5/2017
Size
A3

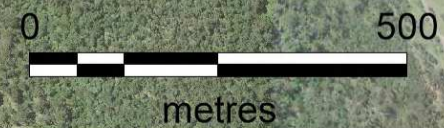
BEGA VALLEY SHIRE COUNCIL
BEGA AND BROGO FRMS&P
BEGA INSET
1% AEP HYDRAULIC CATEGORIES

FIGURE 5.18B



**LEGEND
HYDRAULIC CATEGORY**

- Floodway
- Fringe
- Storage



DATE PLOTTED: 25/01/2017 BY: Luke Evans
FILE: N:\Projects\6599\FY16\044_Bega & Brogo Rivers FRMS&P\Drawings\Workspace\Figures



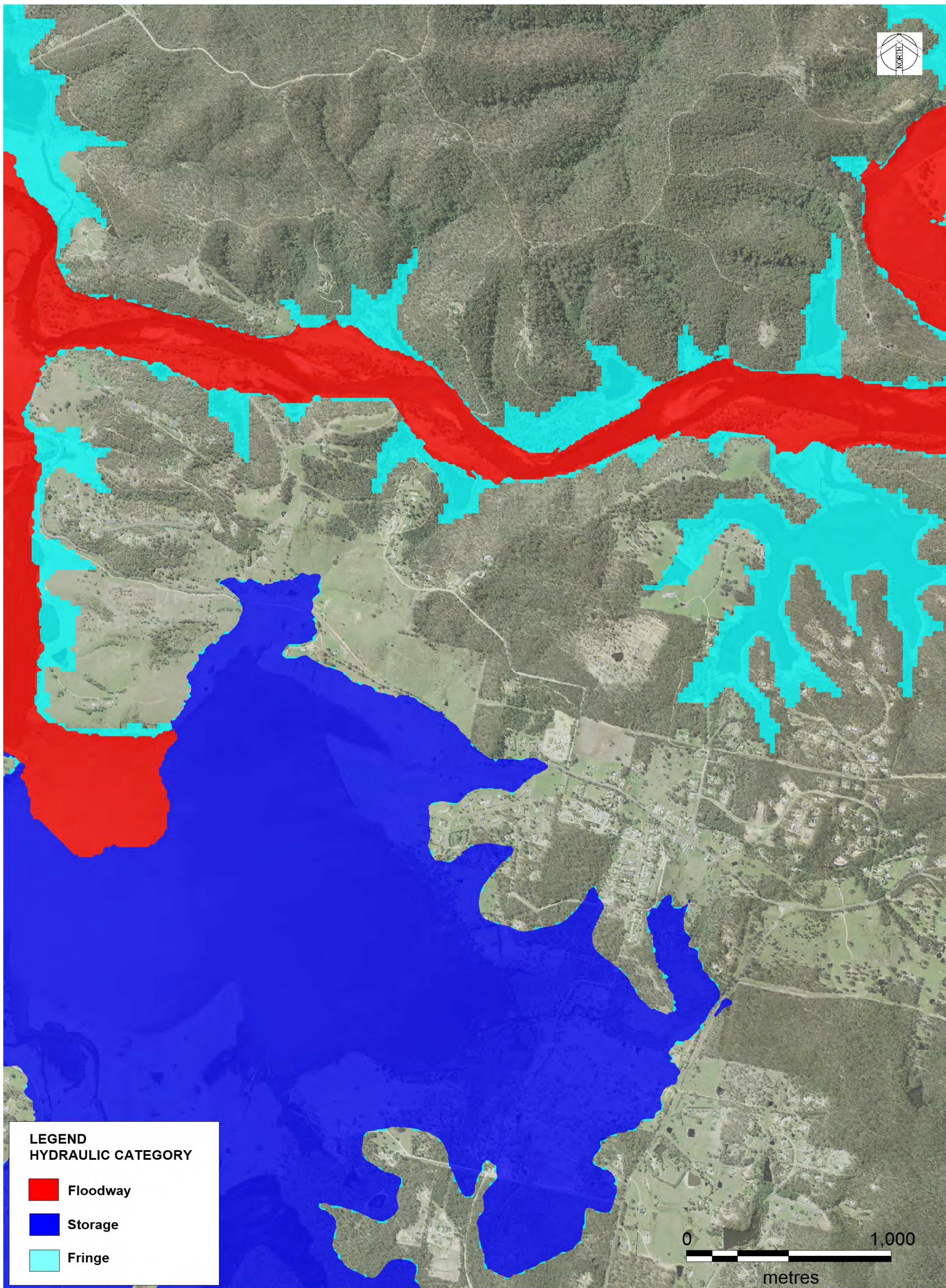
© Cardno Limited All Rights Reserved.
This document is produced by Cardno Limited solely for the benefit of and use by the client in accordance with the terms of the retainer. Cardno Limited does not and shall not assume any responsibility or liability whatsoever to any third party arising out of any use or reliance by third party on the content of this document.

Date
17/5/2017

Size
A3

BEGA VALLEY SHIRE COUNCIL
BEGA AND BROGO FRMS&P
TARRAGANDA INSET
1% AEP HYDRAULIC CATEGORIES

FIGURE 5.18C



**LEGEND
HYDRAULIC CATEGORY**

- Floodway
- Storage
- Fringe



DATE PLOTTED: 25/01/2017 BY: Luke Evans
FILE: N:\Projects\659\FY16\044_Bega & Brogo Rivers FRMS&P\Drawings\Workspace\Figures



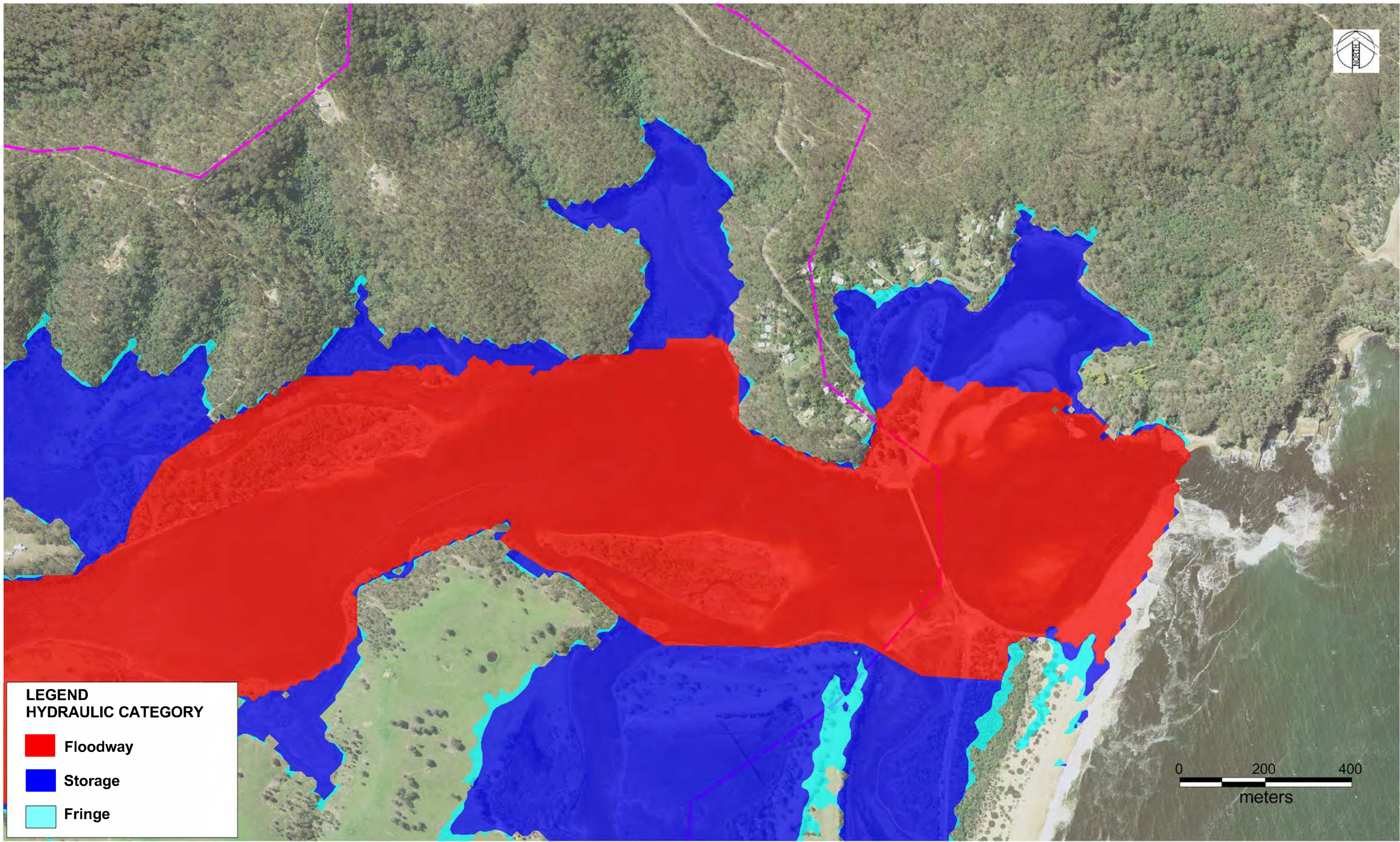
© Cardno Limited All Rights Reserved.
This document is produced by Cardno Limited solely for the benefit of and use by the client in accordance with the terms of the retainer. Cardno Limited does not and shall not assume any responsibility or liability whatsoever to any third party arising out of any use or reliance by third party on the content of this document.

Date
17/5/2017

Size
A3

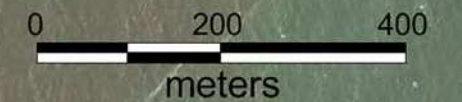
BEGA VALLEY SHIRE COUNCIL
BEGA AND BROGO FRMS&P
KALARU INSET
1% AEP HYDRAULIC CATEGORIES

FIGURE 5.18D



**LEGEND
HYDRAULIC CATEGORY**

- Floodway
- Storage
- Fringe



DATE PLOTTED: 25/01/2017 BY: Luke Evans
FILE: N:\Projects\99\FY16\044_Bega & Brogo Rivers FRMS&P\Drawings\Workspace\Figures

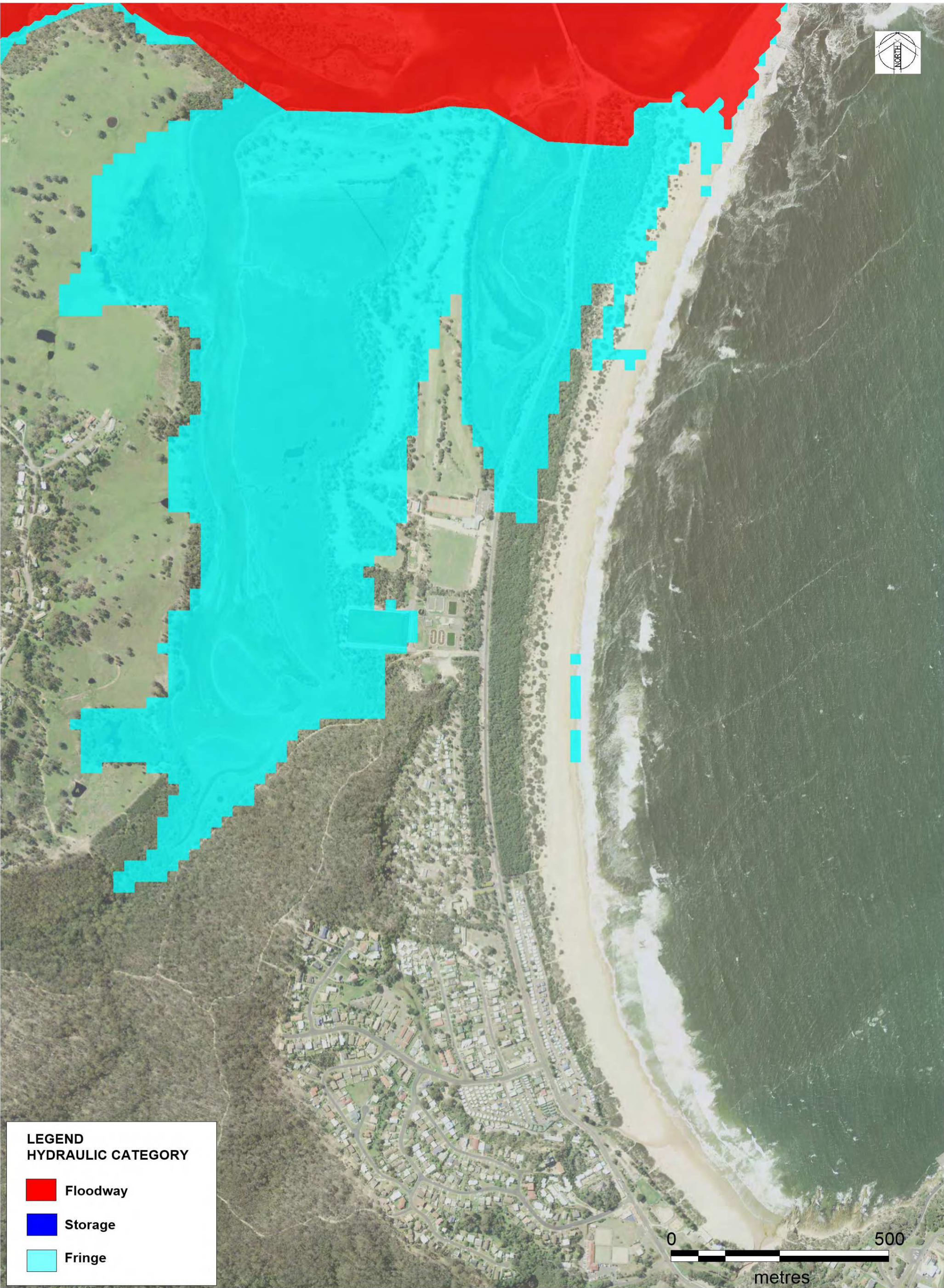


©Cardno Limited All Rights Reserved.
This document is produced by Cardno Limited solely for the benefit of and use by the client in accordance with the terms of the retainer. Cardno Limited does not and shall not assume any responsibility or liability whatsoever to any third party arising out of any use or reliance by third party on the content of this document.

Date
3/5/2017
Size
A3

BEGA VALLEY SHIRE COUNCIL
BEGA AND BROGO FRMS&P
MOGAREEKA INSET
1% AEP HYDRAULIC CATEGORIES

FIGURE 5.18E



LEGEND
HYDRAULIC CATEGORY

- Floodway
- Storage
- Fringe

DATE PLOTTED: 25/01/2017 BY: Luke Evans
FILE: N:\Projects\659\FY16\044_Bega & Brogo Rivers FRMS&P\Drawings\Workspace\Figures



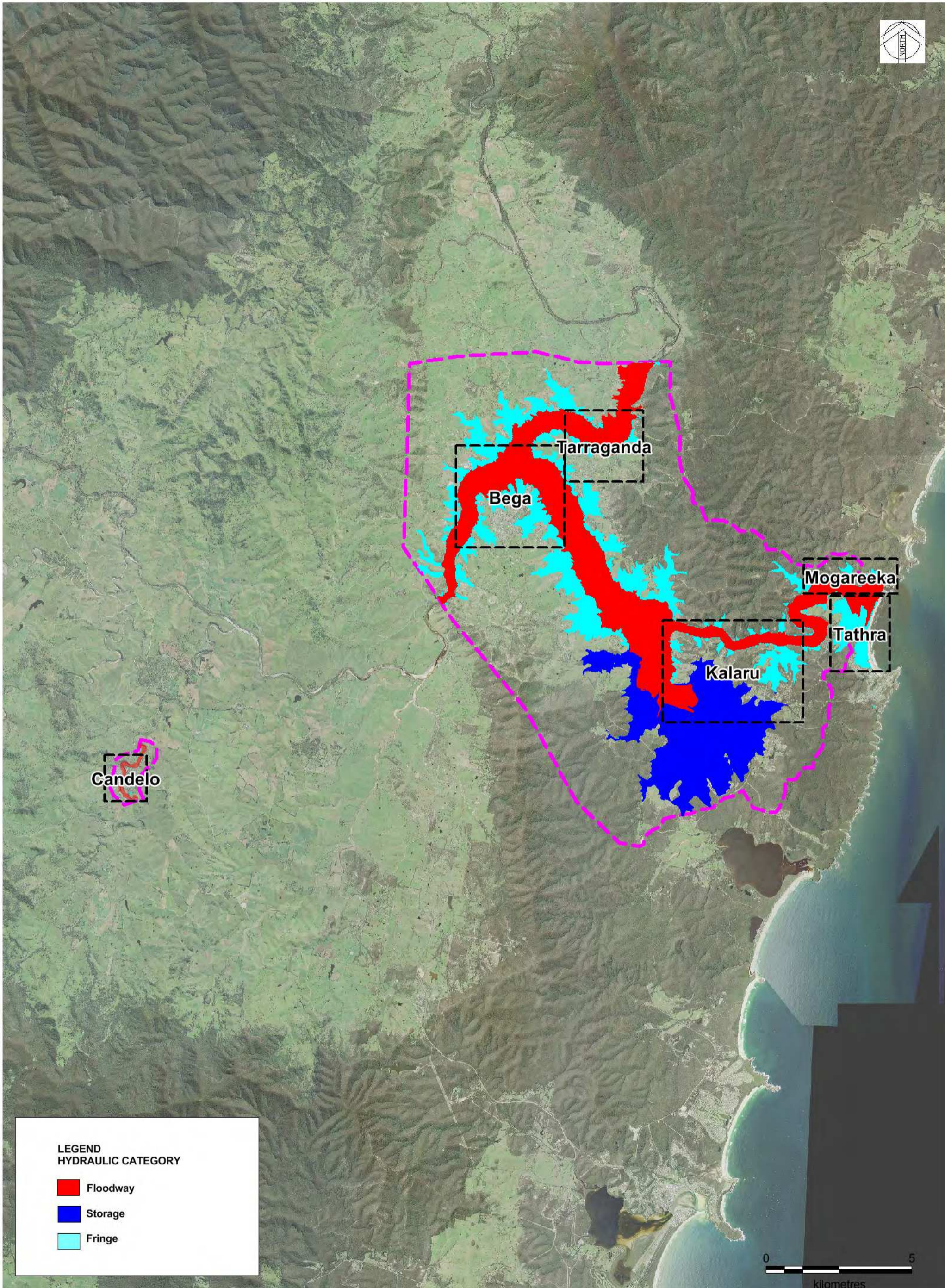
© Cardno Limited All Rights Reserved.
This document is produced by Cardno Limited solely for the benefit of and use by the client in accordance with the terms of the retainer. Cardno Limited does not and shall not assume any responsibility or liability whatsoever to any third party arising out of any use or reliance by third party on the content of this document.

Date
17/5/2017
Size
A3

BEGA VALLEY SHIRE COUNCIL
BEGA AND BROGO FRMS&P

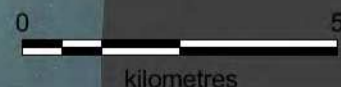
TATHRA INSET
1% AEP HYDRAULIC CATEGORIES

FIGURE 5.18F



**LEGEND
HYDRAULIC CATEGORY**

- Floodway
- Storage
- Fringe



DATE PLOTTED: 25/01/2017 BY: Luke Evans
FILE: N:\Projects\559\FY16\044_Bega & Brogo Rivers FRMS&P\Drawings\Workspace\Figures



© Cardno Limited All Rights Reserved.
This document is produced by Cardno Limited solely for the benefit of and use by the client in accordance with the terms of the retainer. Cardno Limited does not and shall not assume any responsibility or liability whatsoever to any third party arising out of any use or reliance by third party on the content of this document.

Date
3/5/2017

Size
A3

Scale
1:120,000

**BEGA VALLEY SHIRE COUNCIL
BEGA AND BROGO FRMS&P**

PMF HYDRAULIC CATEGORY
FIGURE 5.19



LEGEND
HYDRAULIC CATEGORY

- Floodway
- Storage
- Fringe

DATE PLOTTED: 25/01/2017 BY: Luke Evans
FILE: N:\Projects\659\FY16\044_Bega & Brogo Rivers FRMS&P\Drawings\Workspace\Figures

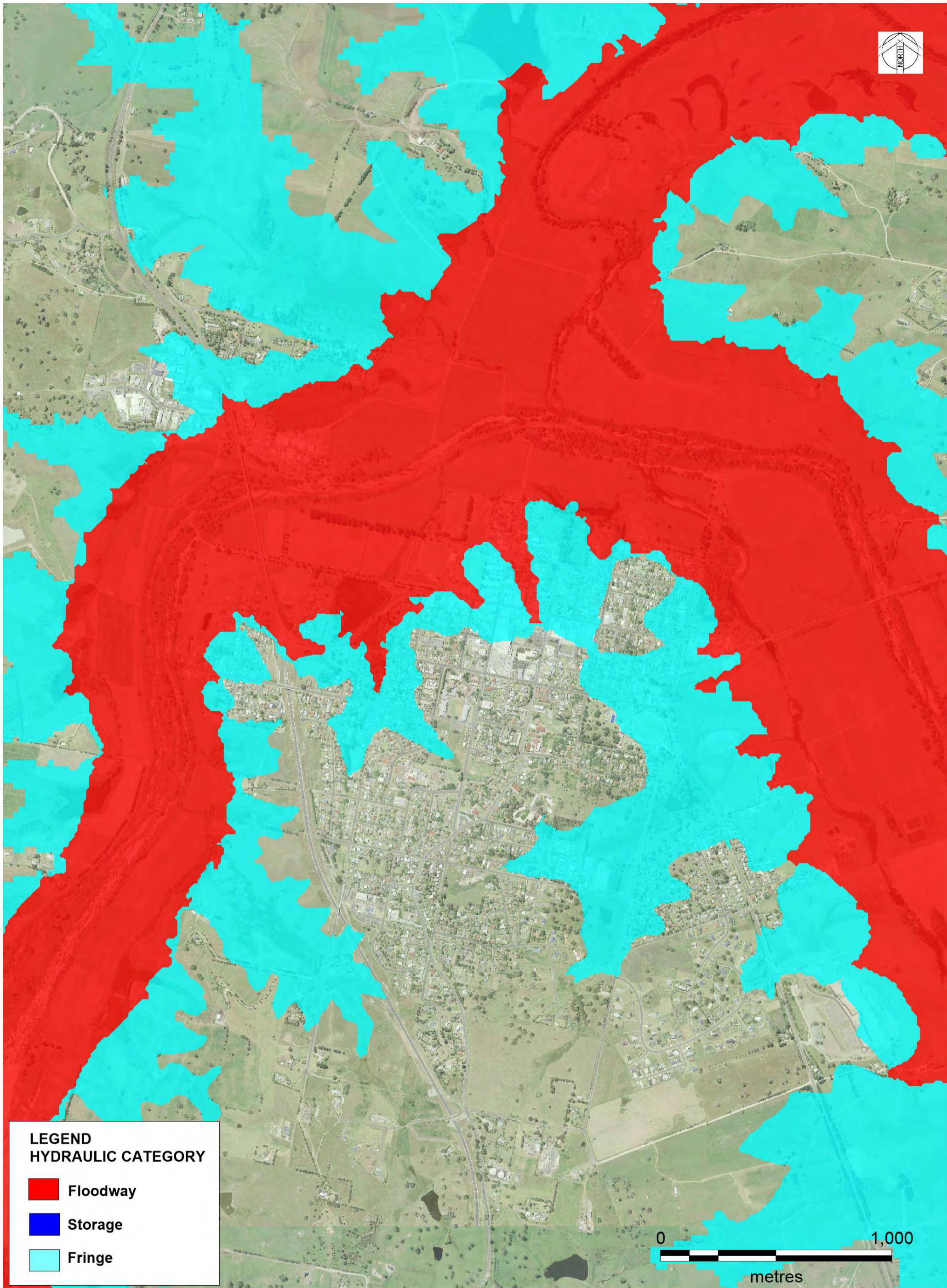


© Cardno Limited All Rights Reserved.
This document is produced by Cardno Limited solely for the benefit of and use by the client in accordance with the terms of the retainer. Cardno Limited does not and shall not assume any responsibility or liability whatsoever to any third party arising out of any use or reliance by third party on the content of this document.

Date
17/5/2017
Size
A3

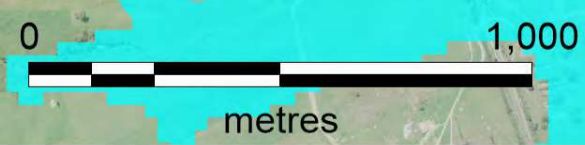
BEGA VALLEY SHIRE COUNCIL
BEGA AND BROGO FRMS&P
CANDELO INSET
PMF HYDRAULIC CATEGORIES

FIGURE 5.19A



**LEGEND
HYDRAULIC CATEGORY**

- Floodway
- Storage
- Fringe



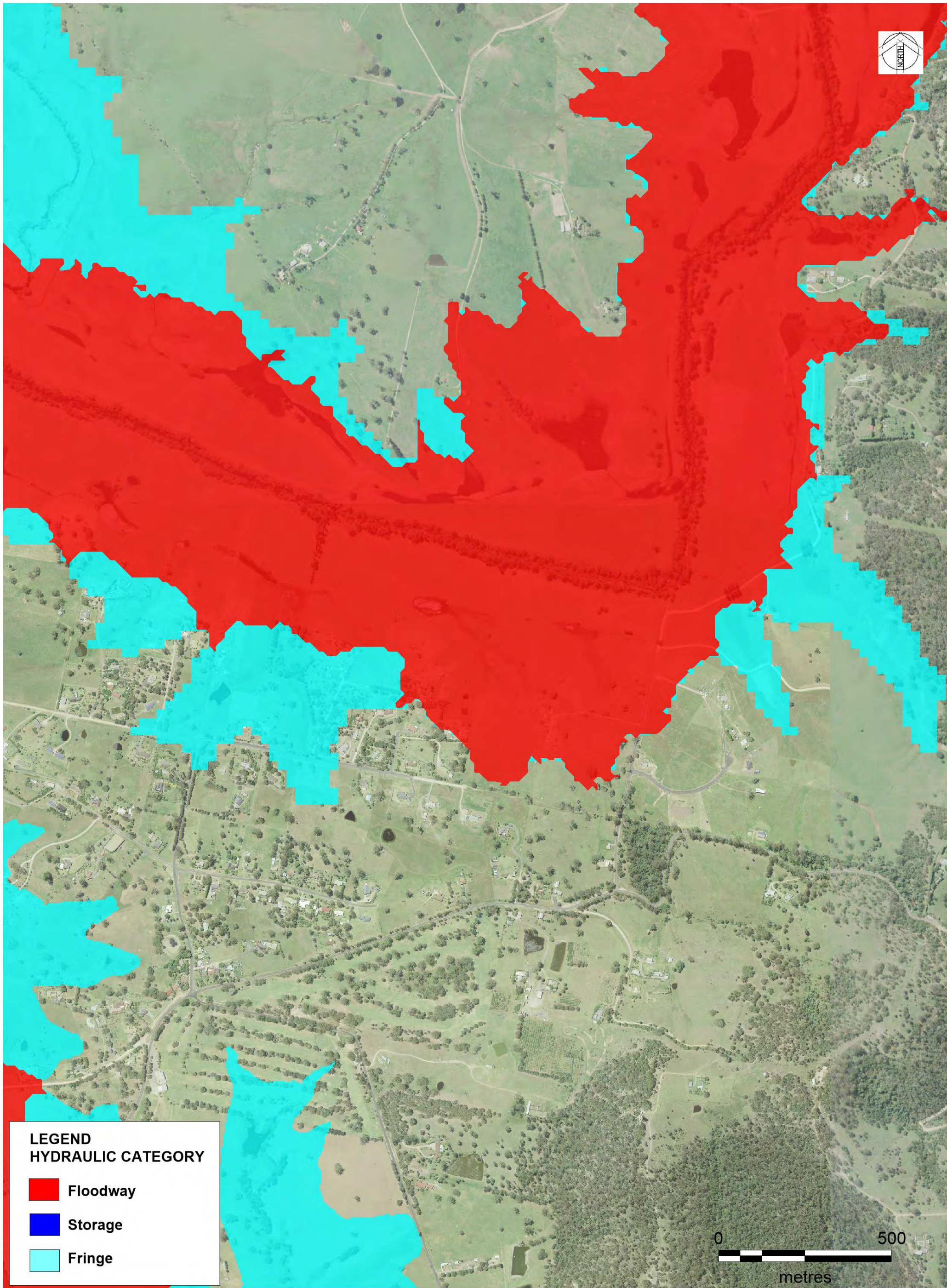
DATE PLOTTED: 25/01/2017 BY: Luke Evans
FILE: N:\Projects\659\FY16\044_Bega & Brogo Rivers FRMS&P\Drawings\Workspace\Figures



© Cardno Limited All Rights Reserved.
This document is produced by Cardno Limited solely for the benefit of and use by the client in accordance with the terms of the retainer. Cardno Limited does not and shall not assume any responsibility or liability whatsoever to any third party arising out of any use or reliance by third party on the content of this document.

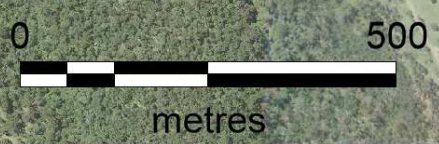
Date
17/5/2017
Size
A3

BEGA VALLEY SHIRE COUNCIL
BEGA AND BROGO FRMS&P
BEGA INSET
PMF HYDRAULIC CATEGORIES
FIGURE 5.19B



LEGEND
HYDRAULIC CATEGORY

- Floodway
- Storage
- Fringe



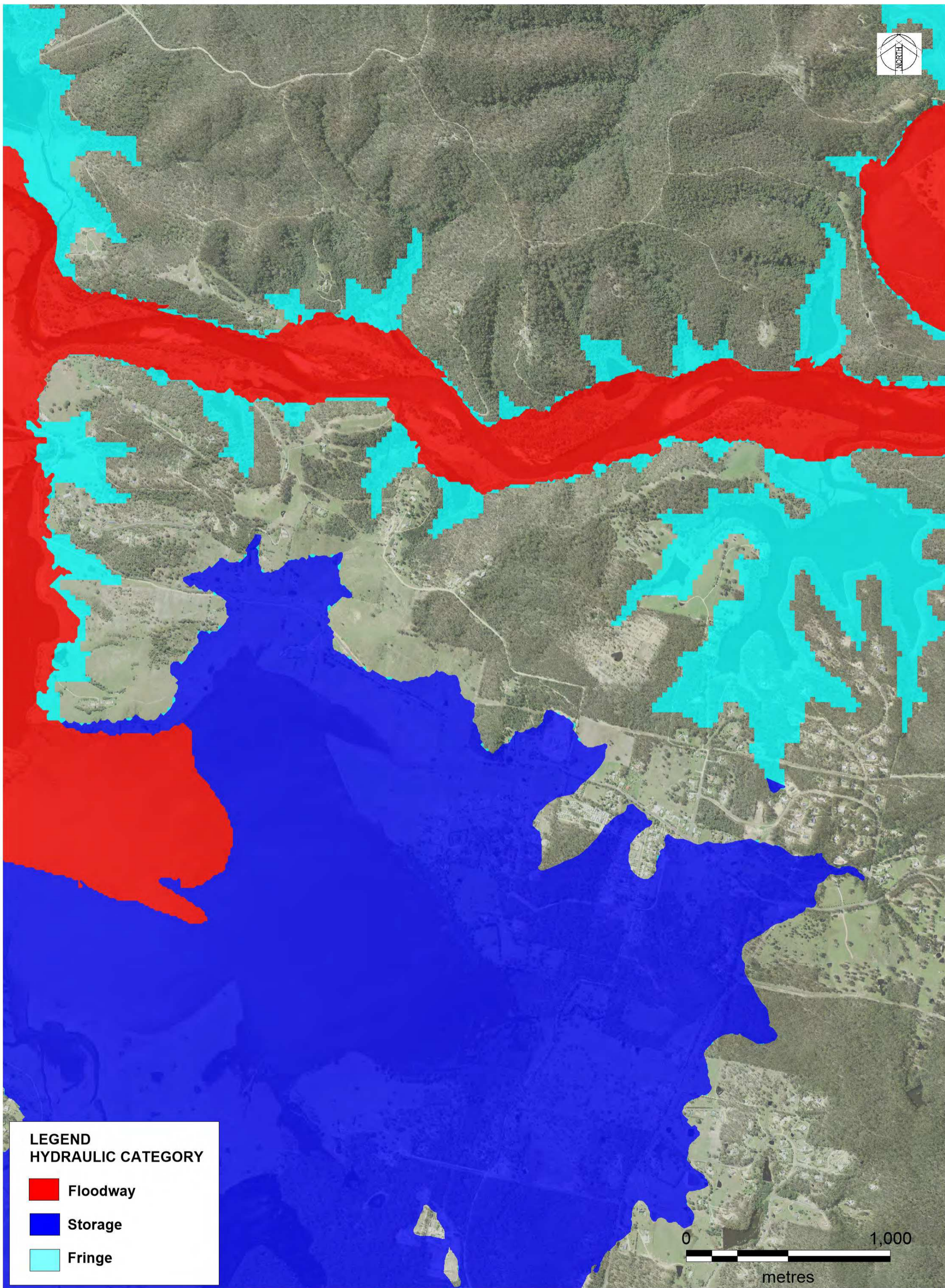
DATE PLOTTED: 25/01/2017 BY: Luke Evans
FILE: N:\Projects\659\FY16\044_Bega & Brogo Rivers FRMS&P\Drawings\Workspace\Figures



© Cardno Limited All Rights Reserved.
This document is produced by Cardno Limited solely for the benefit of and use by the client in accordance with the terms of the retainer. Cardno Limited does not and shall not assume any responsibility or liability whatsoever to any third party arising out of any use or reliance by third party on the content of this document.

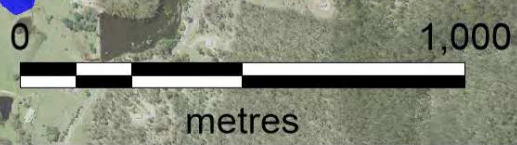
Date
17/5/2017
Size
A3

BEGA VALLEY SHIRE COUNCIL
BEGA AND BROGO FRMS&P
TARRAGANDA INSET
PMF HYDRAULIC CATEGORIES
FIGURE 5.19C



LEGEND
HYDRAULIC CATEGORY

- Floodway
- Storage
- Fringe

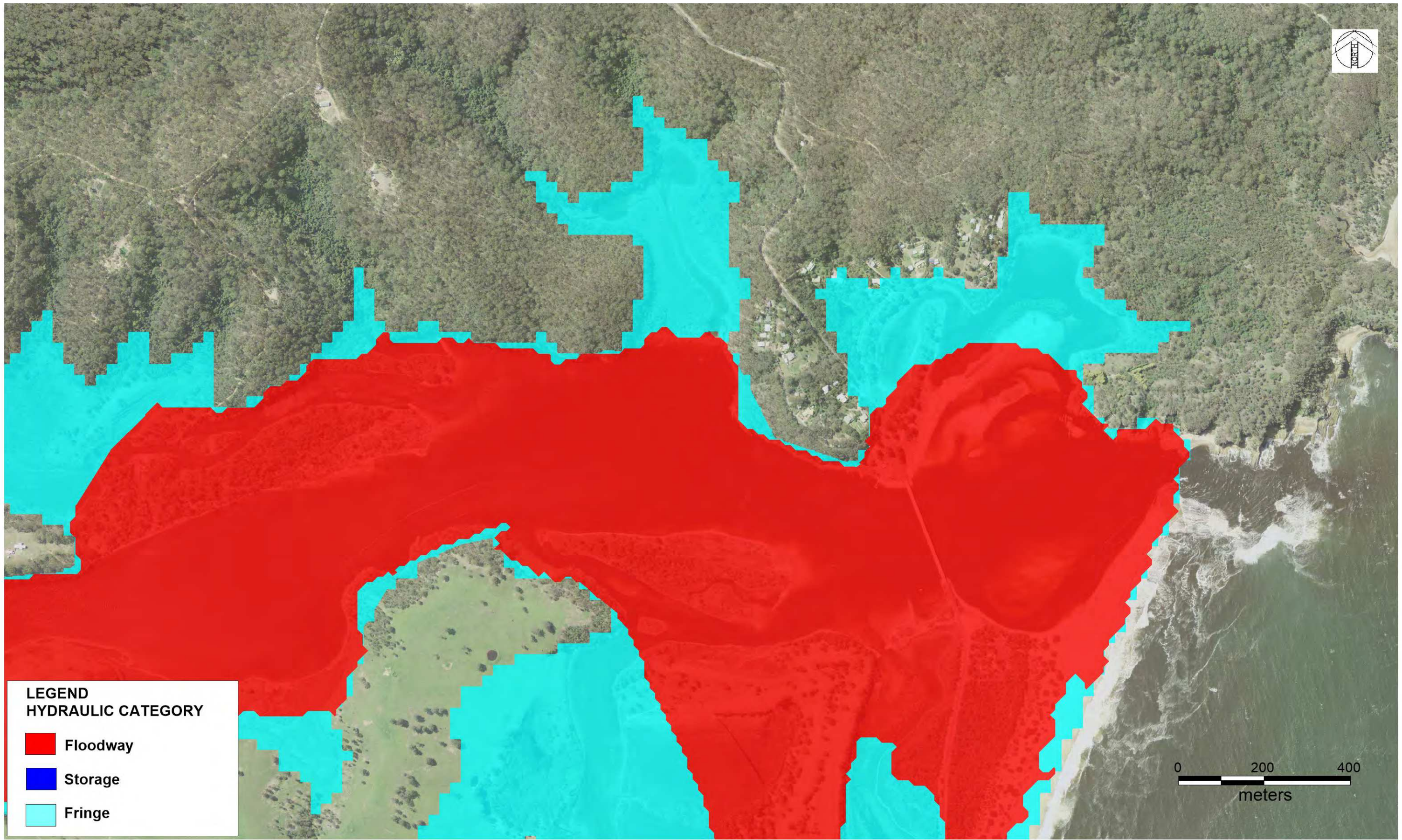


DATE PLOTTED: 25/01/2017 BY: Luke Evans
FILE: N:\Projects\659\FY16\044_Bega & Brogo Rivers FRMS&P\Drawings\Workspace\Figures



© Cardno Limited All Rights Reserved.
This document is produced by Cardno Limited solely for the benefit of and use by the client in accordance with the terms of the retainer. Cardno Limited does not and shall not assume any responsibility or liability whatsoever to any third party arising out of any use or reliance by third party on the content of this document.

Date
17/5/2017
Size
A3



**LEGEND
HYDRAULIC CATEGORY**

- Floodway
- Storage
- Fringe



DATE PLOTTED: 25/01/2017 BY: Luke Evans
FILE: N:\Projects\699\FY16\044_Bega & Brogo Rivers FRMS&P\Drawings\Workspace\Figures

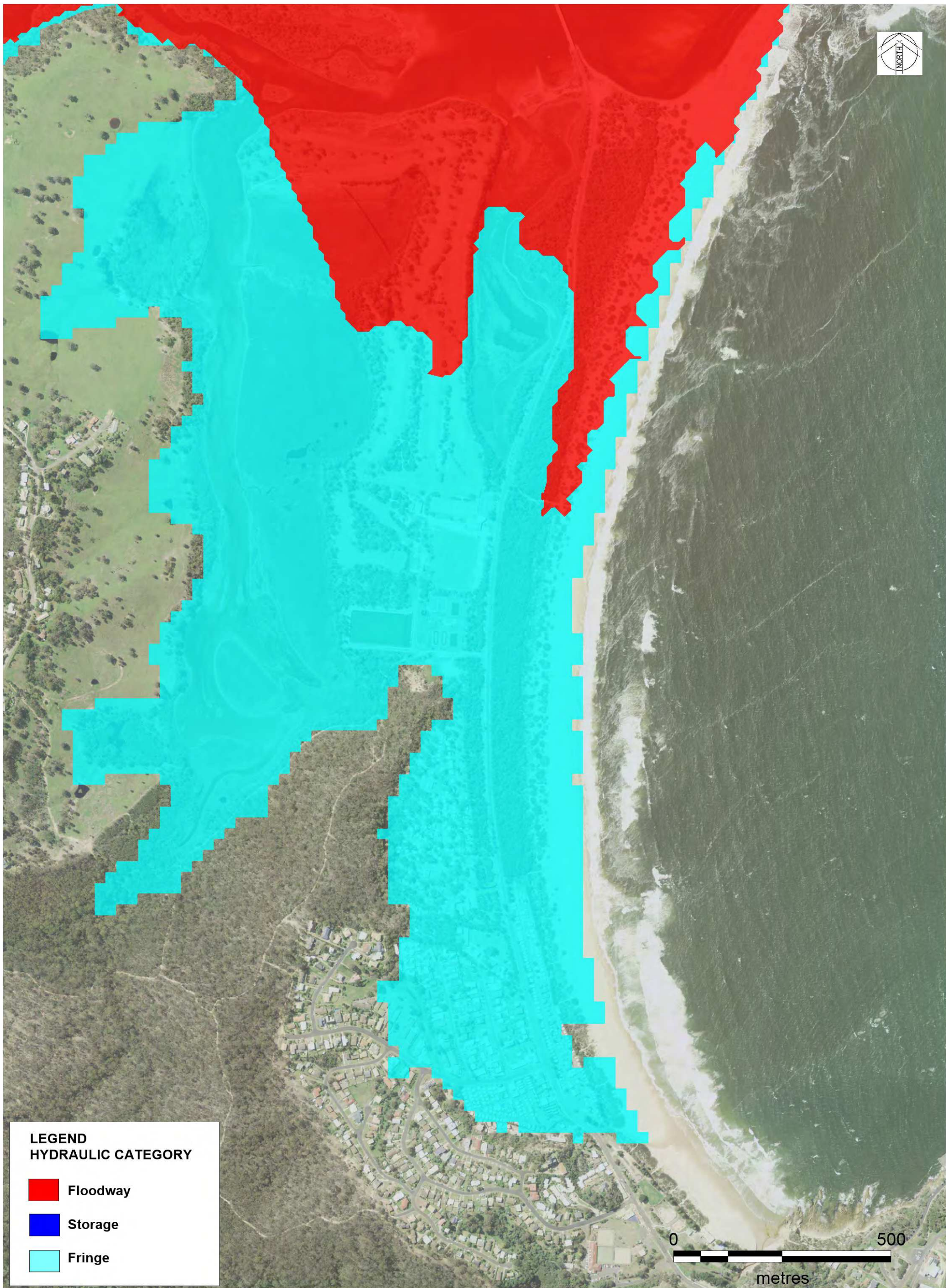


© Cardno Limited All Rights Reserved.
This document is produced by Cardno Limited solely for the benefit of and use by the client in accordance with the terms of the retainer. Cardno Limited does not and shall not assume any responsibility or liability whatsoever to any third party arising out of any use or reliance by third party on the content of this document.

Date
3/5/2017
Size
A3

BEGA VALLEY SHIRE COUNCIL
BEGA AND BROGO FRMS&P
MOGAREEKA INSET
PMF HYDRAULIC CATEGORIES

FIGURE 5.19E



**LEGEND
HYDRAULIC CATEGORY**

- Floodway
- Storage
- Fringe

DATE PLOTTED: 25/01/2017 BY: Luke Evans
FILE: N:\Projects\599\FY16\044_Bega & Brogo Rivers FRMS&P\Drawings\Workspace\Figures



© Cardno Limited All Rights Reserved.
This document is produced by Cardno Limited solely for the benefit of and use by the client in accordance with the terms of the retainer. Cardno Limited does not and shall not assume any responsibility or liability whatsoever to any third party arising out of any use or reliance by third party on the content of this document.

Date
17/5/2017
Size
A3

BEGA VALLEY SHIRE COUNCIL
BEGA AND BROGO FRMS&P
TATHRA INSET
PMF HYDRAULIC CATEGORIES

FIGURE 5.19F

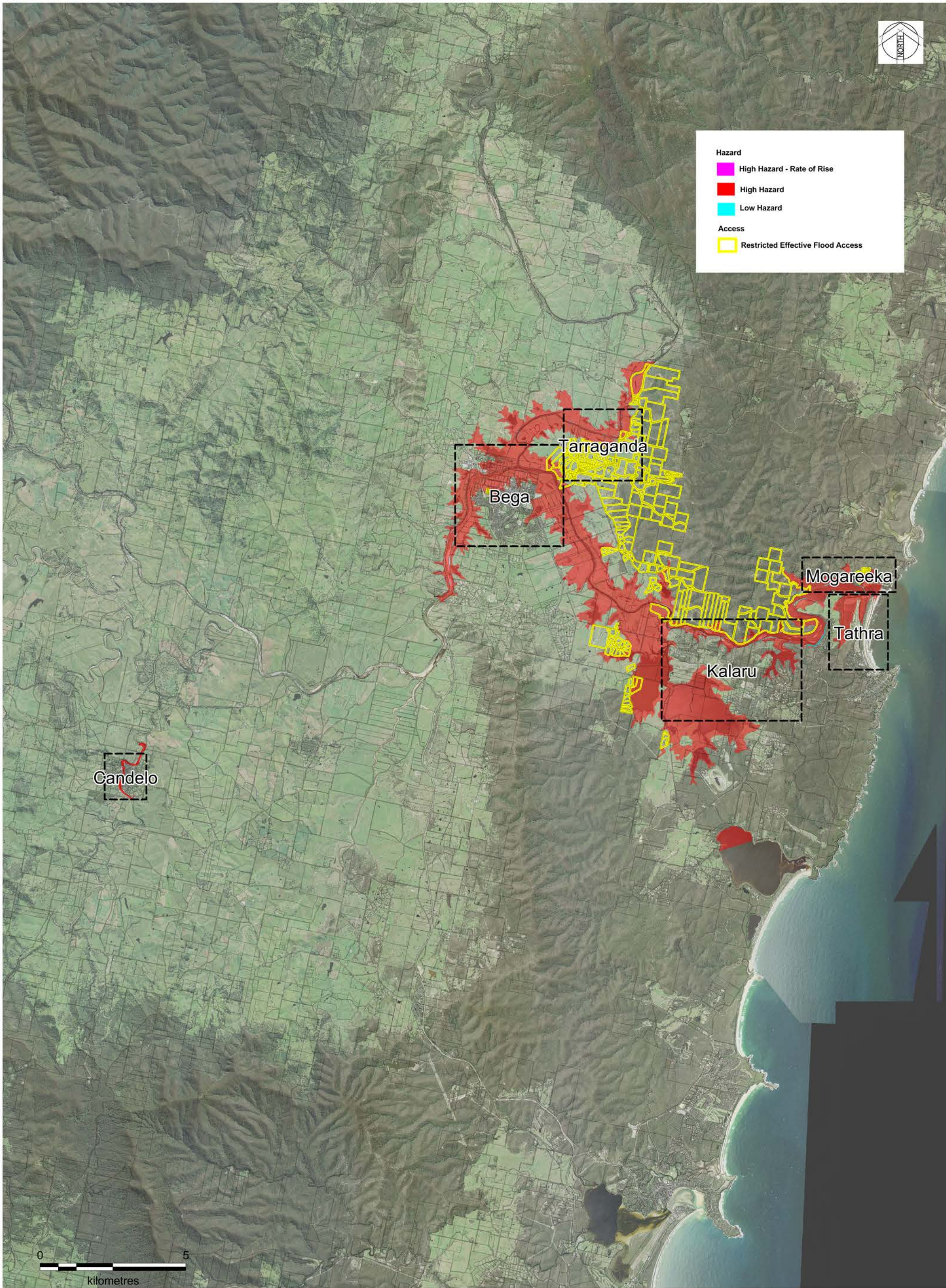


Hazard

- High Hazard - Rate of Rise
- High Hazard
- Low Hazard

Access

- Restricted Effective Flood Access



DATE PLOTTED: 25/01/2017 BY: Luke Evans
FILE: N:\Projects\599\FY16\044_Bega & Brogo Rivers FRMS&P\Drawings\Workspace\Figures



© Cardno Limited All Rights Reserved.
This document is produced by Cardno Limited solely for the benefit of and use by the client in accordance with the terms of the retainer. Cardno Limited does not and shall not assume any responsibility or liability whatsoever to any third party arising out of any use or reliance by third party on the content of this document.

Date
3/5/2017

Size
A3

Scale
1:120,000

BEGA VALLEY SHIRE COUNCIL
BEGA AND BROGO FRMS&P
10 % AEP TRUE HAZARD

FIGURE 5.22



Hazard

- High Hazard - Rate of Rise
- High Hazard
- Low Hazard

Access

- Restricted Effective Flood Access

DATE PLOTTED: 25/01/2017 BY: Luke Evans
FILE: N:\Projects\5591\FY16\044_Bega & Brogo Rivers FRMS&P\Drawings\Workspace\Figures



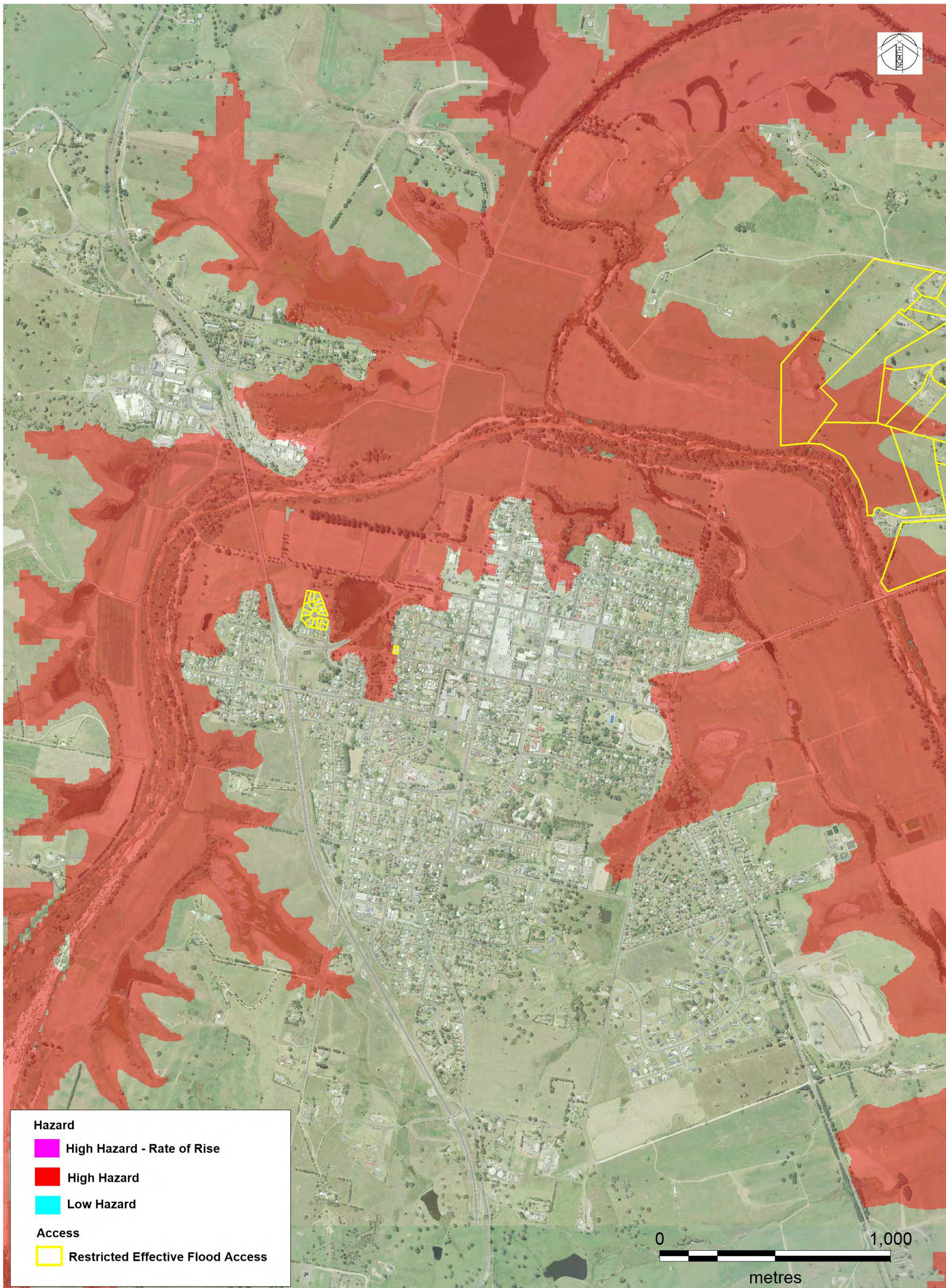
© Cardno Limited All Rights Reserved.
This document is produced by Cardno Limited solely for the benefit of and use by the client in accordance with the terms of the retainer. Cardno Limited does not and shall not assume any responsibility or liability whatsoever to any third party arising out of any use or reliance by third party on the content of this document.

Date
18/5/2017

Size
A3

BEGA VALLEY SHIRE COUNCIL
BEGA AND BROGO FRMS&P
CANDELO INSET
10% AEP TRUE HAZARD

FIGURE 5.22A



Hazard

- High Hazard - Rate of Rise
- High Hazard
- Low Hazard

Access

- Restricted Effective Flood Access

DATE PLOTTED: 25/01/2017 BY: Luke Evans
FILE: N:\Projects\6599\FY16\04_Bega & Brogo Rivers FRMS&P\Drawings\Workspace\Figures



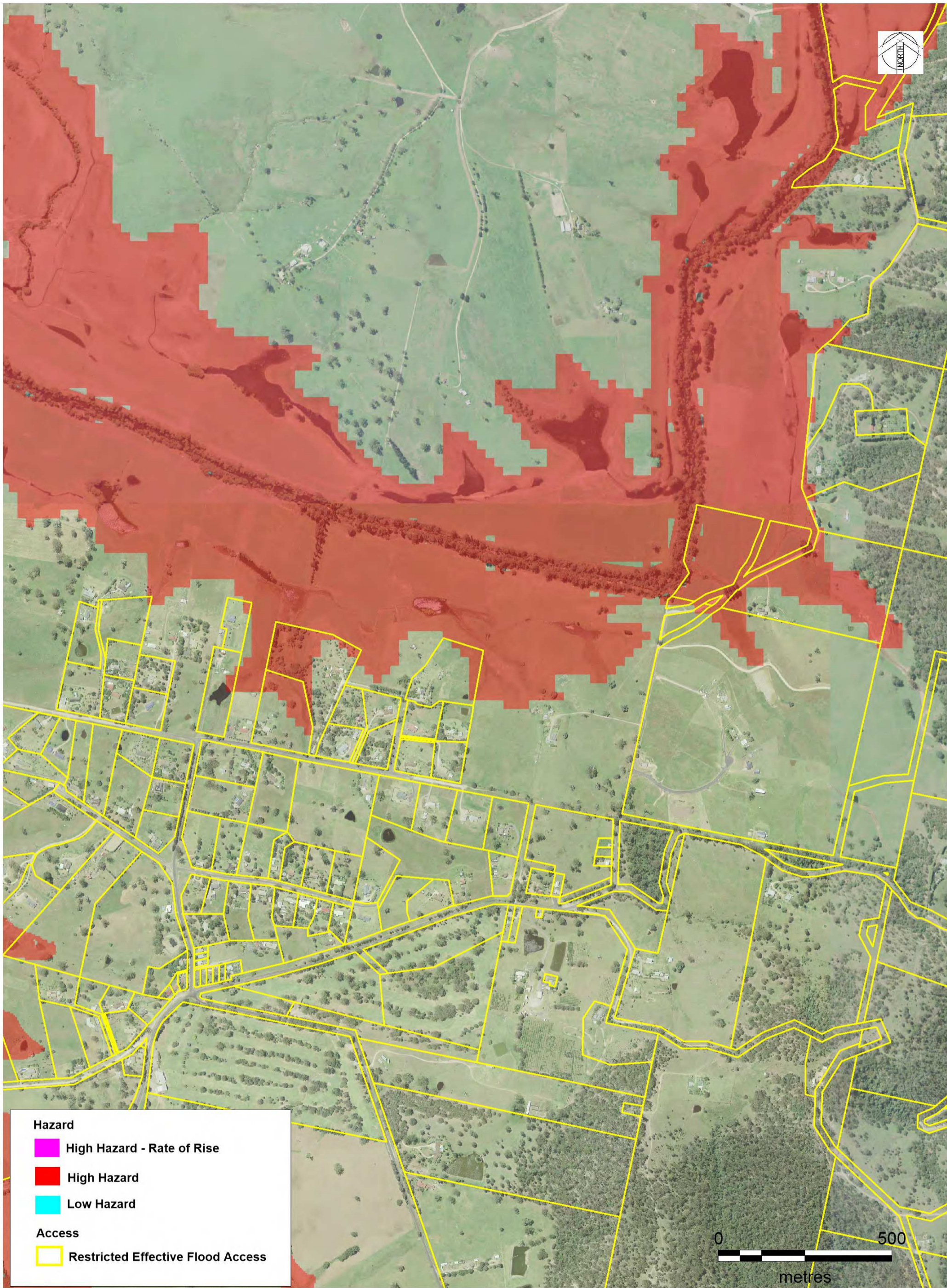
© Cardno Limited All Rights Reserved.
This document is produced by Cardno Limited solely for the benefit of and use by the client in accordance with the terms of the retainer. Cardno Limited does not and shall not assume any responsibility or liability whatsoever to any third party arising out of any use or reliance by third party on the content of this document.

Date
18/5/2017

Size
A3

**BEGA VALLEY SHIRE COUNCIL
BEGA AND BROGO FRMS&P**

BEGA INSET
10% AEP TRUE HAZARD
FIGURE 5.22B



Hazard

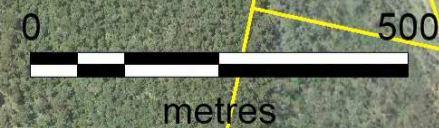
 High Hazard - Rate of Rise

 High Hazard

 Low Hazard

Access

 Restricted Effective Flood Access



DATE PLOTTED: 25/01/2017 BY: Luke Evans
FILE: N:\Projects\659\FY16\044_Bega & Brogo Rivers FRMS&P\Drawings\Workspace\Figures



© Cardno Limited All Rights Reserved.
This document is produced by Cardno Limited solely for the benefit of and use by the client in accordance with the terms of the retainer. Cardno Limited does not and shall not assume any responsibility or liability whatsoever to any third party arising out of any use or reliance by third party on the content of this document.

Date
18/5/2017

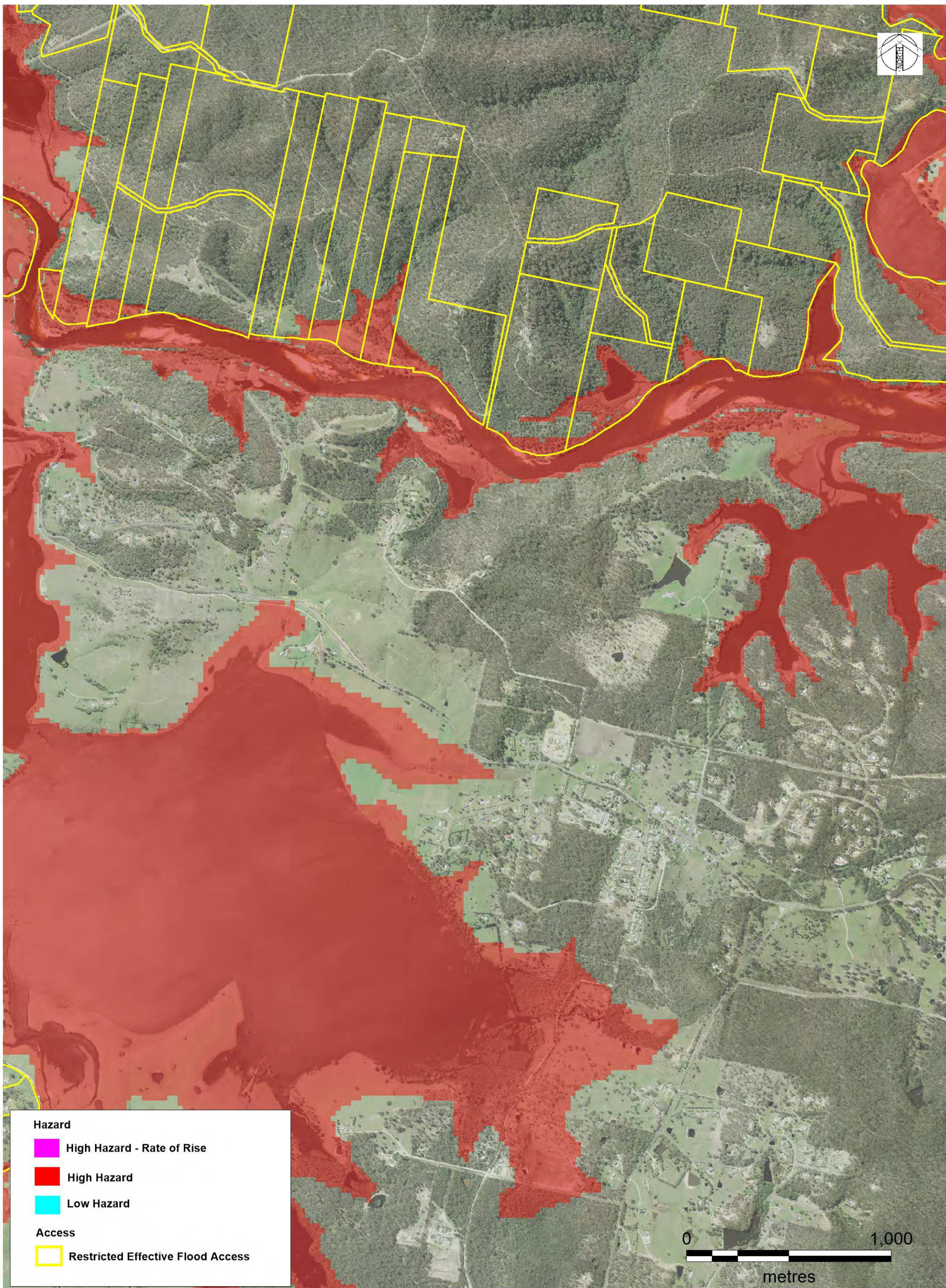
Size
A3

BEGA VALLEY SHIRE COUNCIL

BEGA AND BROGO FRMS&P

TARRAGANDA INSET
10% AEP TRUE HAZARD

FIGURE 5.22C



Hazard

- High Hazard - Rate of Rise
- High Hazard
- Low Hazard

Access

- Restricted Effective Flood Access



DATE PLOTTED: 25/01/2017 BY: Luke Evans
FILE: N:\Projects\699\FY16\044_Bega & Brogo Rivers FRMS&P\Drawings\Workspace\Figures



© Cardno Limited All Rights Reserved
This document is produced by Cardno Limited solely for the benefit of and use by the client in accordance with the terms of the retainer. Cardno Limited does not and shall not assume any responsibility or liability whatsoever to any third party arising out of any use or reliance by third party on the content of this document.

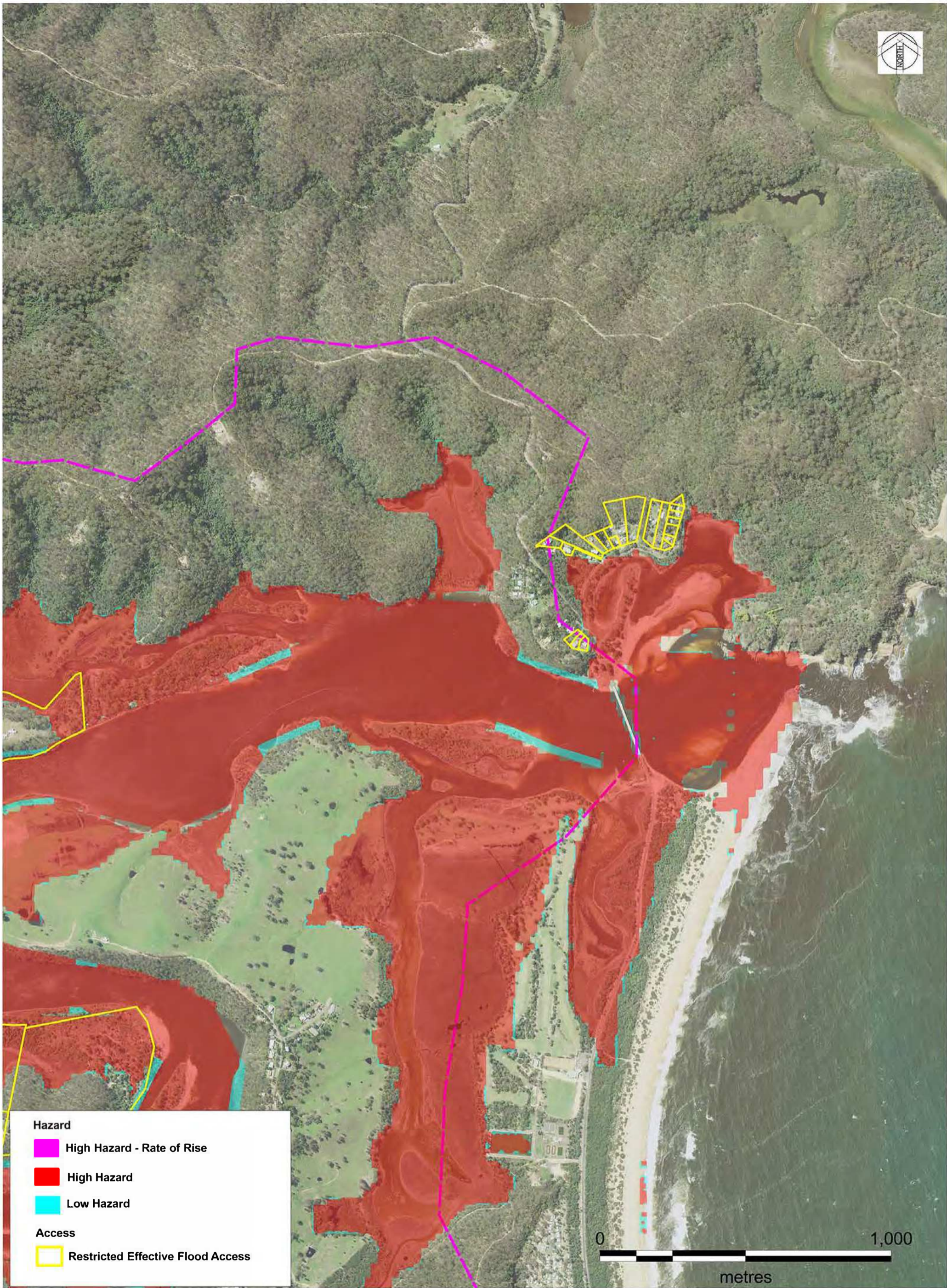
Date
18/5/2017

Size
A3

BEGA VALLEY SHIRE COUNCIL
BEGA AND BROGO FRMS&P

KALARU INSET
10% AEP TRUE HAZARD

FIGURE 5.22D



Hazard

- High Hazard - Rate of Rise
- High Hazard
- Low Hazard

Access

- Restricted Effective Flood Access

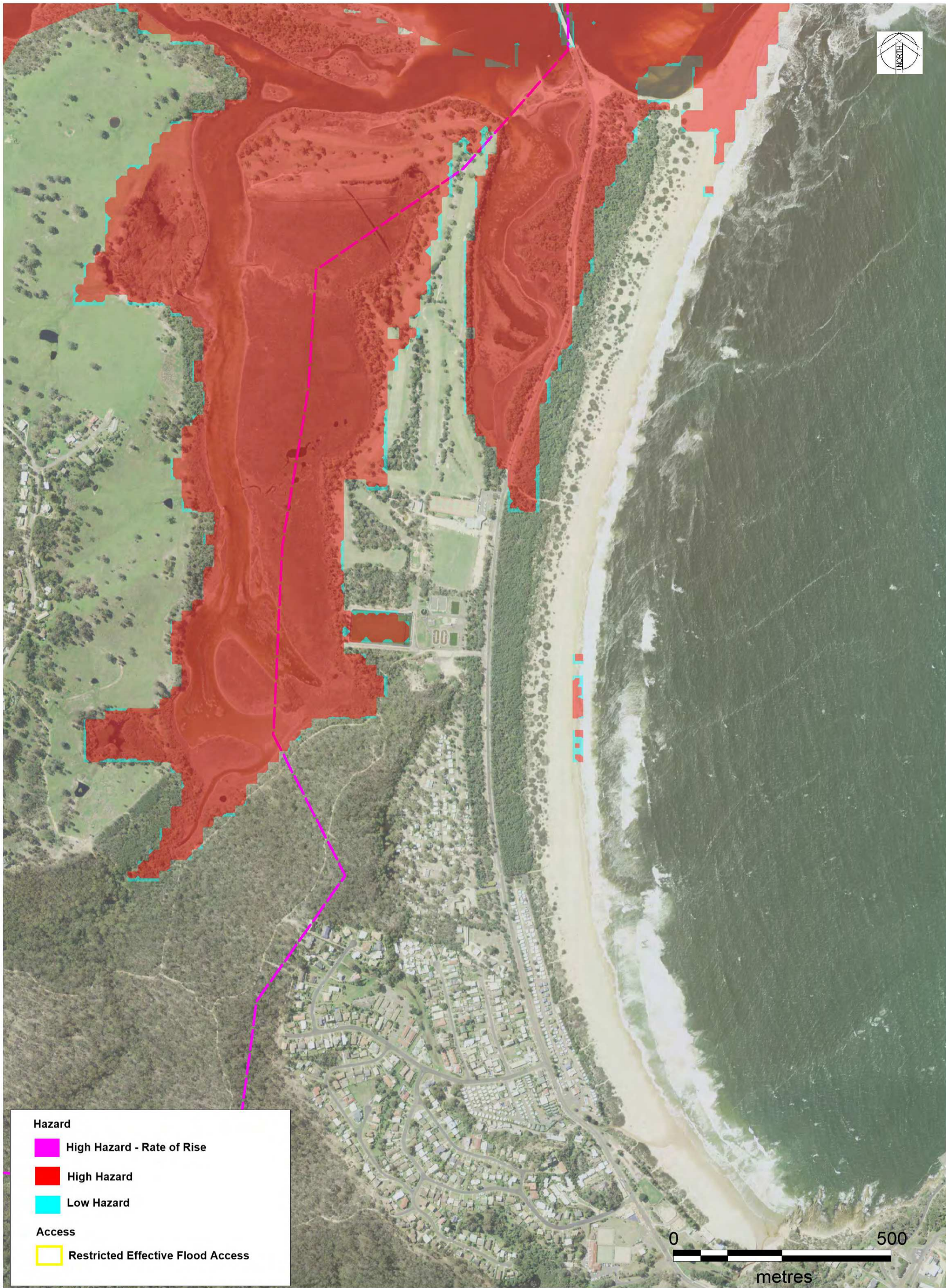
DATE PLOTTED: 25/01/2017 BY: Luke Evans
FILE: N:\Projects\599\FY16\044_Bega & Brogo Rivers FRMS&P\Drawings\Workspace\Figures



© Cardno Limited All Rights Reserved.
This document is produced by Cardno Limited solely for the benefit of and use by the client in accordance with the terms of the retainer. Cardno Limited does not and shall not assume any responsibility or liability whatsoever to any third party arising out of any use or reliance by third party on the content of this document.

Date
18/5/2017
Size
A3

BEGA VALLEY SHIRE COUNCIL
BEGA AND BROGO FRMS&P
MOGAREEKA INSET
10% AEP TRUE HAZARD
FIGURE 5.22E



Hazard

- High Hazard - Rate of Rise
- High Hazard
- Low Hazard

Access

- Restricted Effective Flood Access



DATE PLOTTED: 25/01/2017 BY: Luke Evans
FILE: N:\Projects\659\FY16\044_Bega & Brogo Rivers FRMS&P\Drawings\Workspace\Figures



© Cardno Limited All Rights Reserved.
This document is produced by Cardno Limited solely for the benefit of and use by the client in accordance with the terms of the retainer. Cardno Limited does not and shall not assume any responsibility or liability whatsoever to any third party arising out of any use or reliance by third party on the content of this document.

Date
18/5/2017
Size
A3

**BEGA VALLEY SHIRE COUNCIL
BEGA AND BROGO FRMS&P**

TATHRA INSET
10% AEP TRUE HAZARD

FIGURE 5.22F

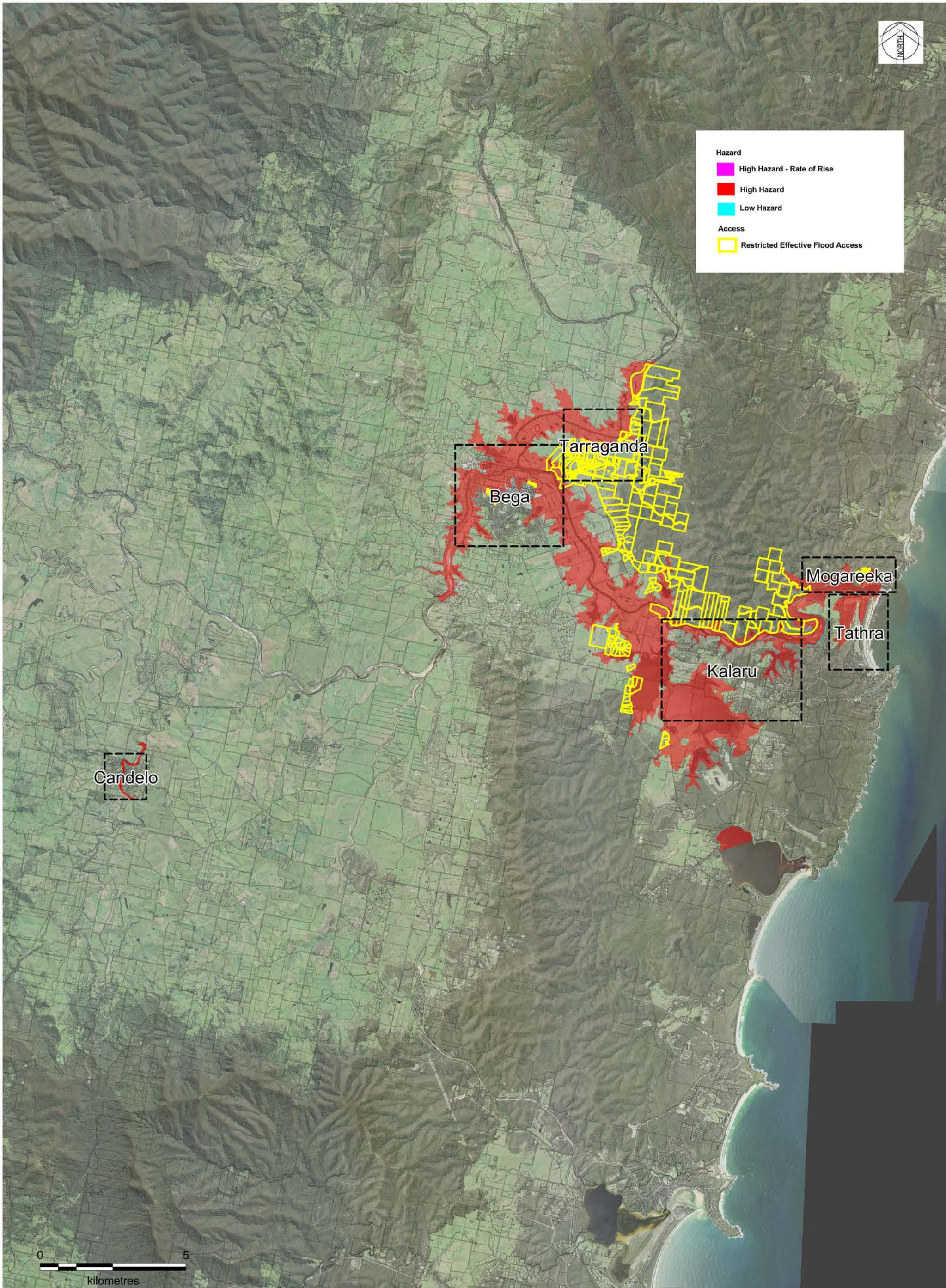


Hazard

- High Hazard - Rate of Rise
- High Hazard
- Low Hazard

Access

- Restricted Effective Flood Access



DATE PLOTTED: 25/01/2017 BY: Luke Evans
FILE: N:\Projects\599\FY16\044_Bega & Brogo Rivers FRMS&P\Drawings\Workspace\Figures



© Cardno Limited All Rights Reserved.
This document is produced by Cardno Limited solely for the benefit of and use by the client in accordance with the terms of the retainer. Cardno Limited does not and shall not assume any responsibility or liability whatsoever to any third party arising out of any use or reliance by third party on the content of this document.

Date
3/5/2017

Size
A3

Scale
1:120,000

**BEGA VALLEY SHIRE COUNCIL
BEGA AND BROGO FRMS&P**

5 % AEP TRUE HAZARD

FIGURE 5.23