

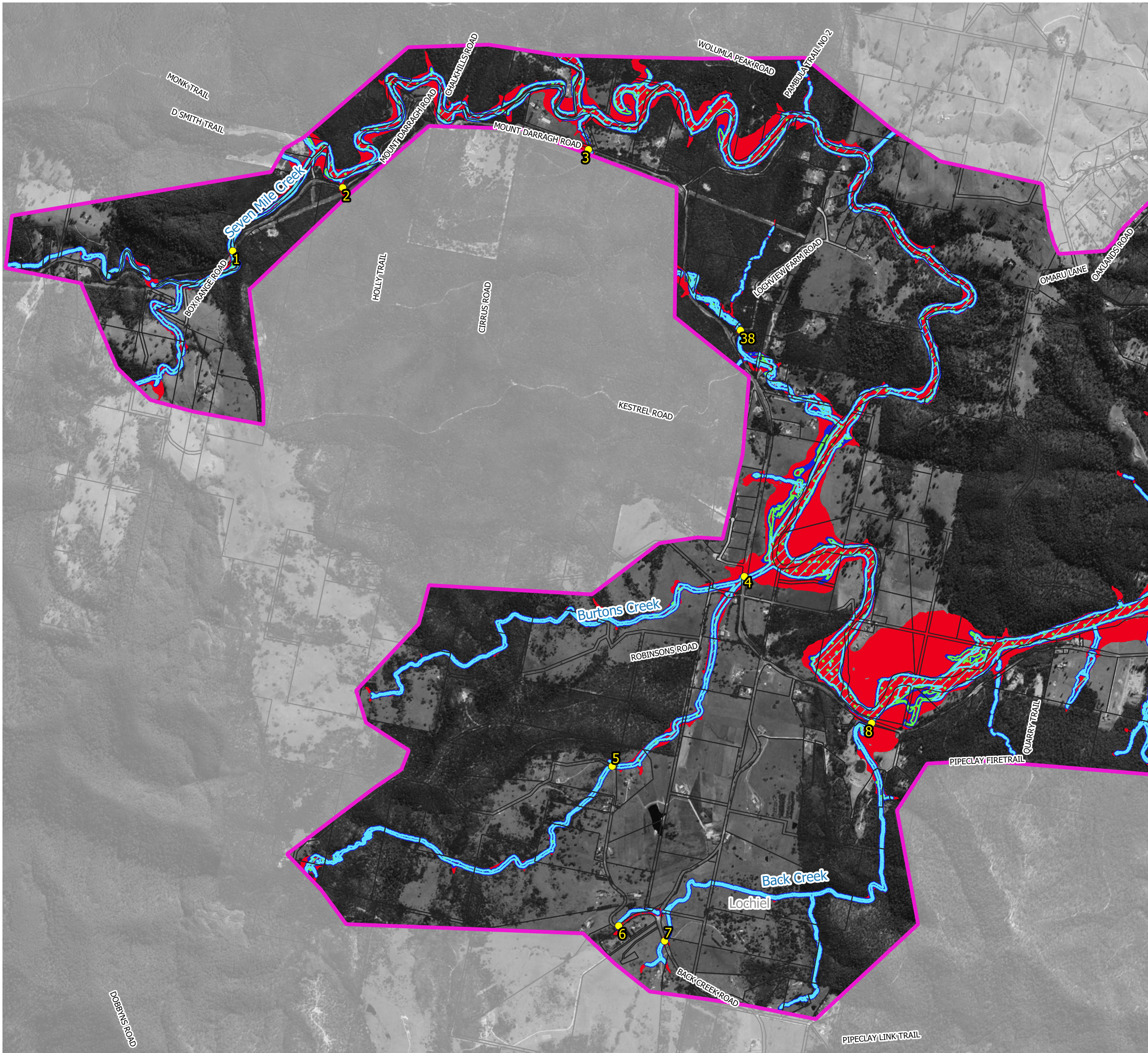
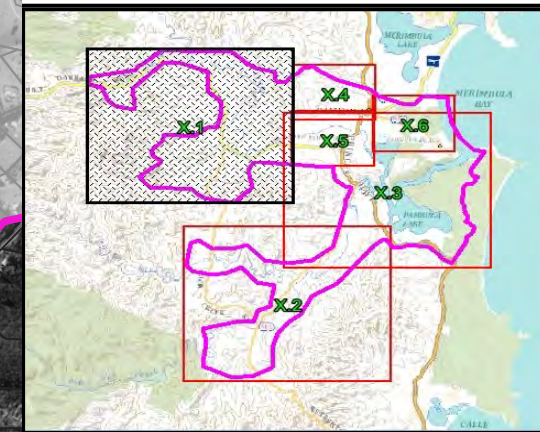
---

# APPENDIX J






## ROADWAY INUNDATION INFORMATION

---

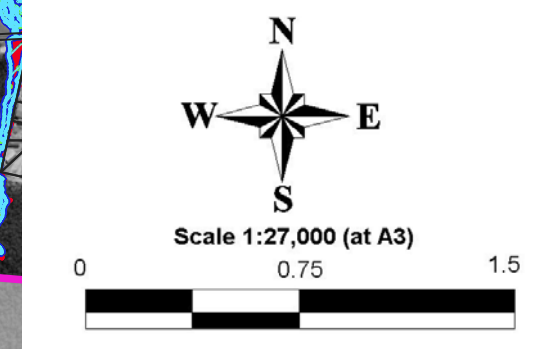




**LEGEND**

-  5% AEP Flood Inundation Extent
-  1% AEP Flood Inundation Extent
-  0.5% AEP Flood Inundation Extent
-  PMF Inundation Extent
-  Road Overtopping Point

Notes:  
Aerial photograph: Google Satellite 2019  
Only areas subject to inundation depths of more than 0.1 metres are displayed



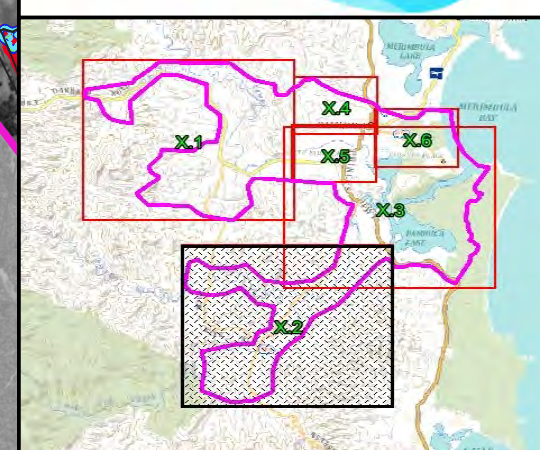
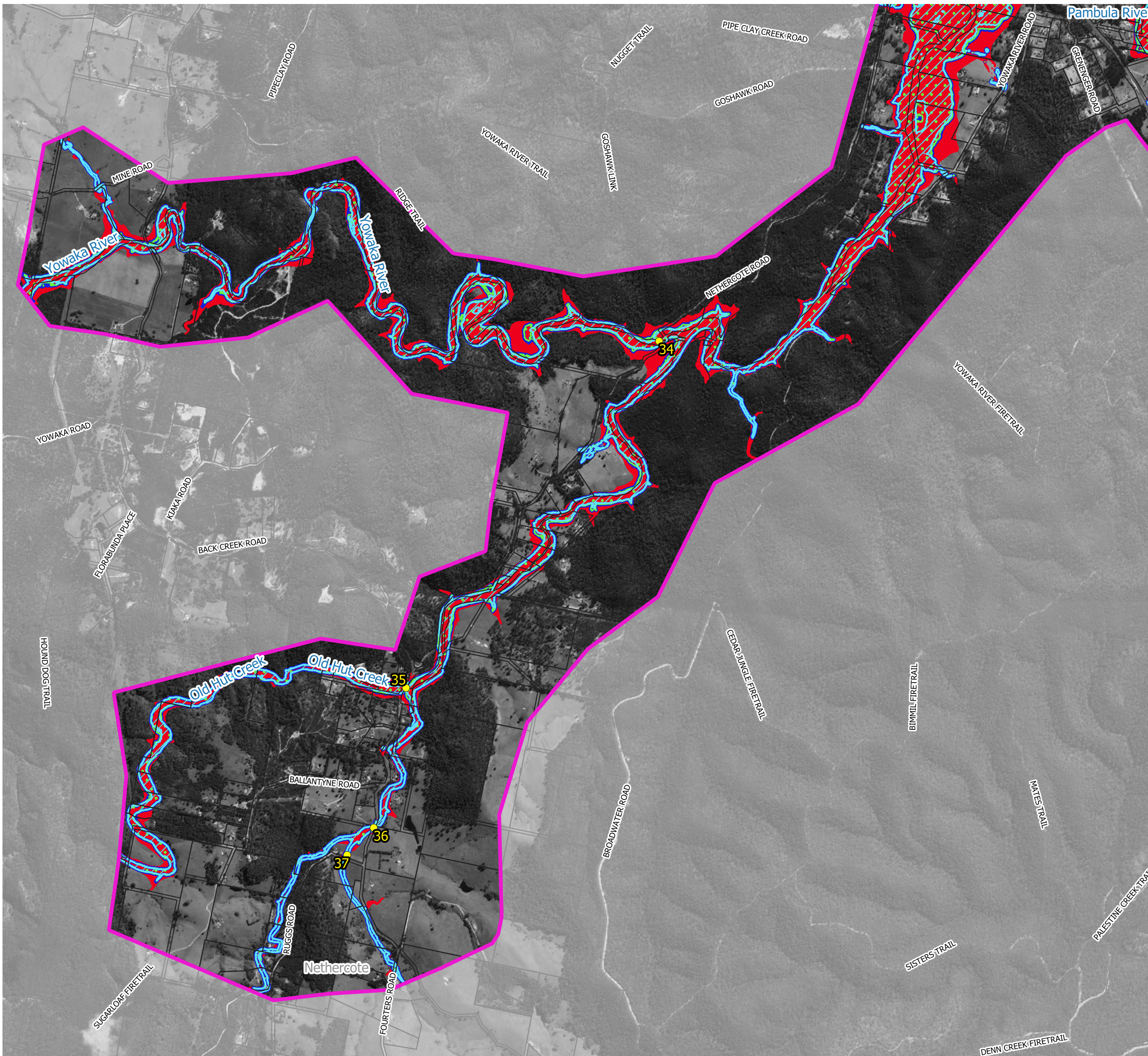
Scale 1:27,000 (at A3)

0 0.75 1.5

**Figure J1.1  
Road Overtopping Points**

Prepared By:  
 **Catchment Simulation Solutions**  
Suite 10.01, 70 Phillip St  
Sydney, NSW 2000

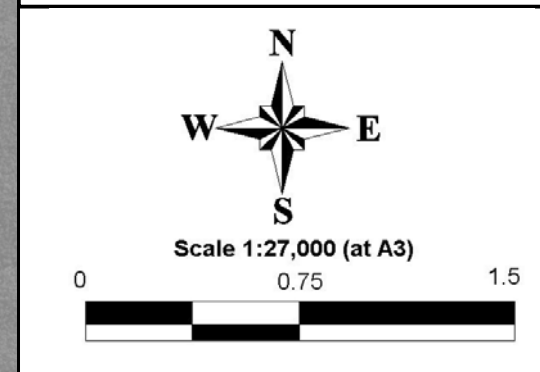
File Name: Figure J1 Road Overtopping Points



**LEGEND**

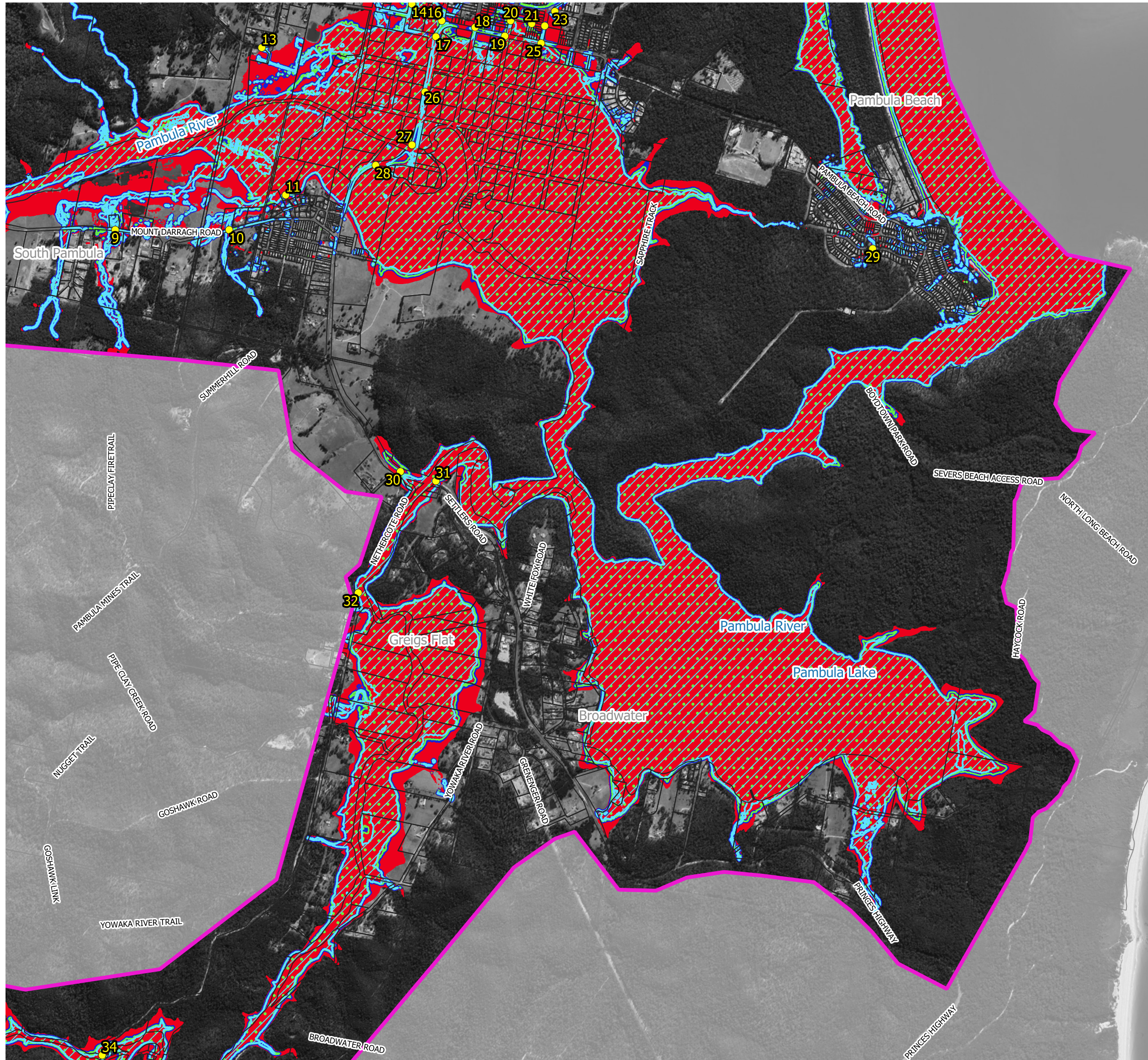
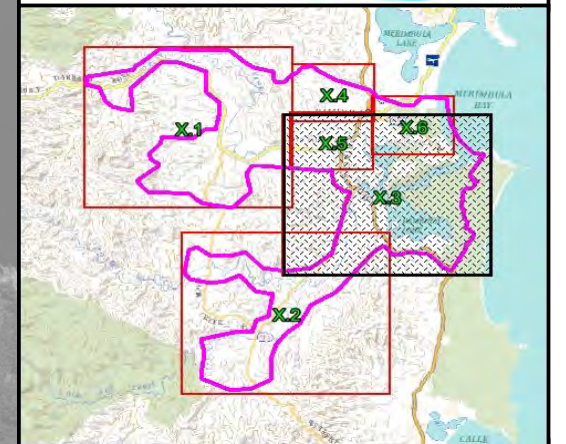
- 5% AEP Flood Inundation Extent
- 1% AEP Flood Inundation Extent
- 0.5% AEP Flood Inundation Extent
- PMF Inundation Extent
- Road Overtopping Point

Notes:  
 Aerial photograph: Google Satellite 2019  
 Only areas subject to inundation depths of more than 0.1 metres are displayed



**Figure J1.2**  
**Road Overtopping Points**

Prepared By:  
**Catchment Simulation Solutions**  
 Suite 10.01, 70 Phillip St  
 Sydney, NSW 2000



**LEGEND**

- 5% AEP Flood Inundation Extent
- 1% AEP Flood Inundation Extent
- 0.5% AEP Flood Inundation Extent
- PMF Inundation Extent
- Road Overtopping Point

Notes:  
 Aerial photograph: Google Satellite 2019  
 Only areas subject to inundation depths of more than 0.1 metres are displayed

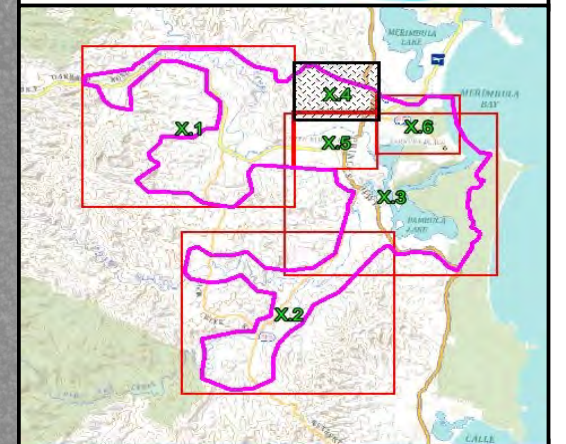
N  
 W — \* — E  
 S

Scale 1:27,000 (at A3)

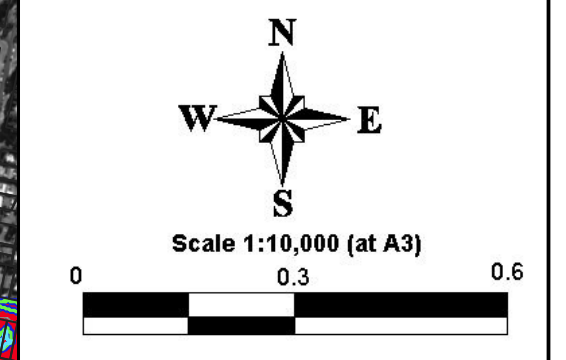
0                      0.75                      1.5

**Figure J1.3  
 Road Overtopping Points**


Prepared By:  
**Catchment Simulation Solutions**  
 Suite 10.01, 70 Phillip St  
 Sydney, NSW 2000



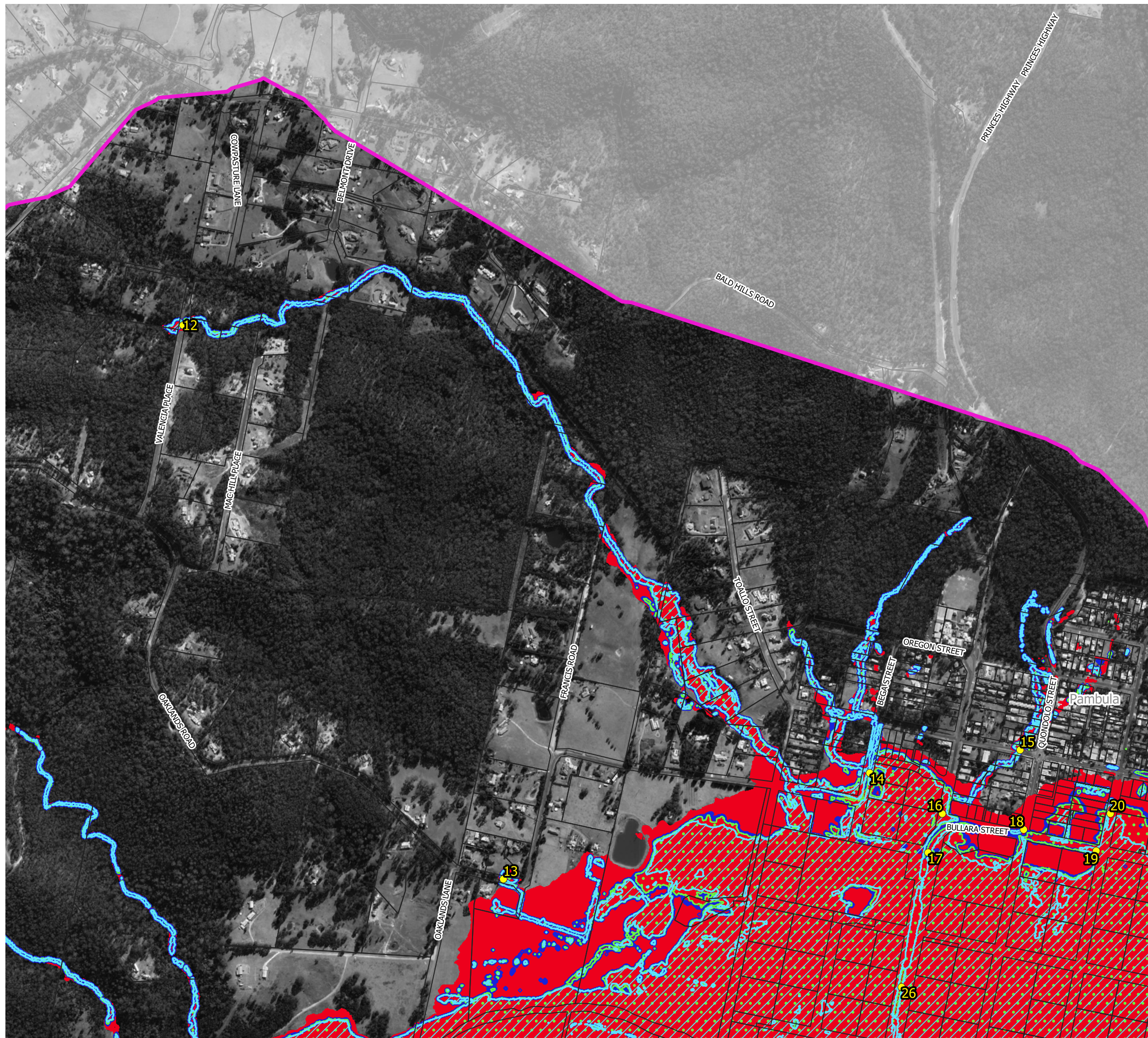
Notes:  
Aerial photograph: Google Satellite 2019  
Only areas subject to inundation depths of more than 0.1 metres are displayed

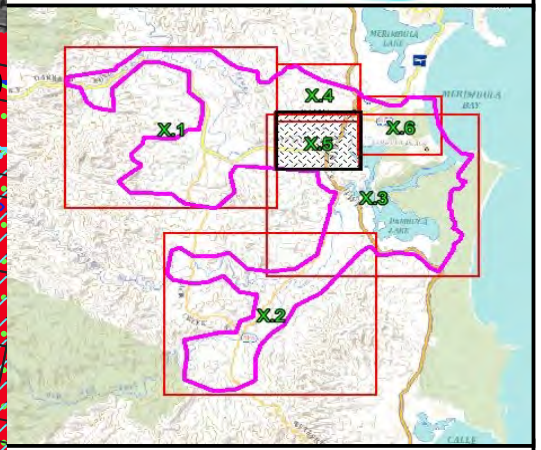
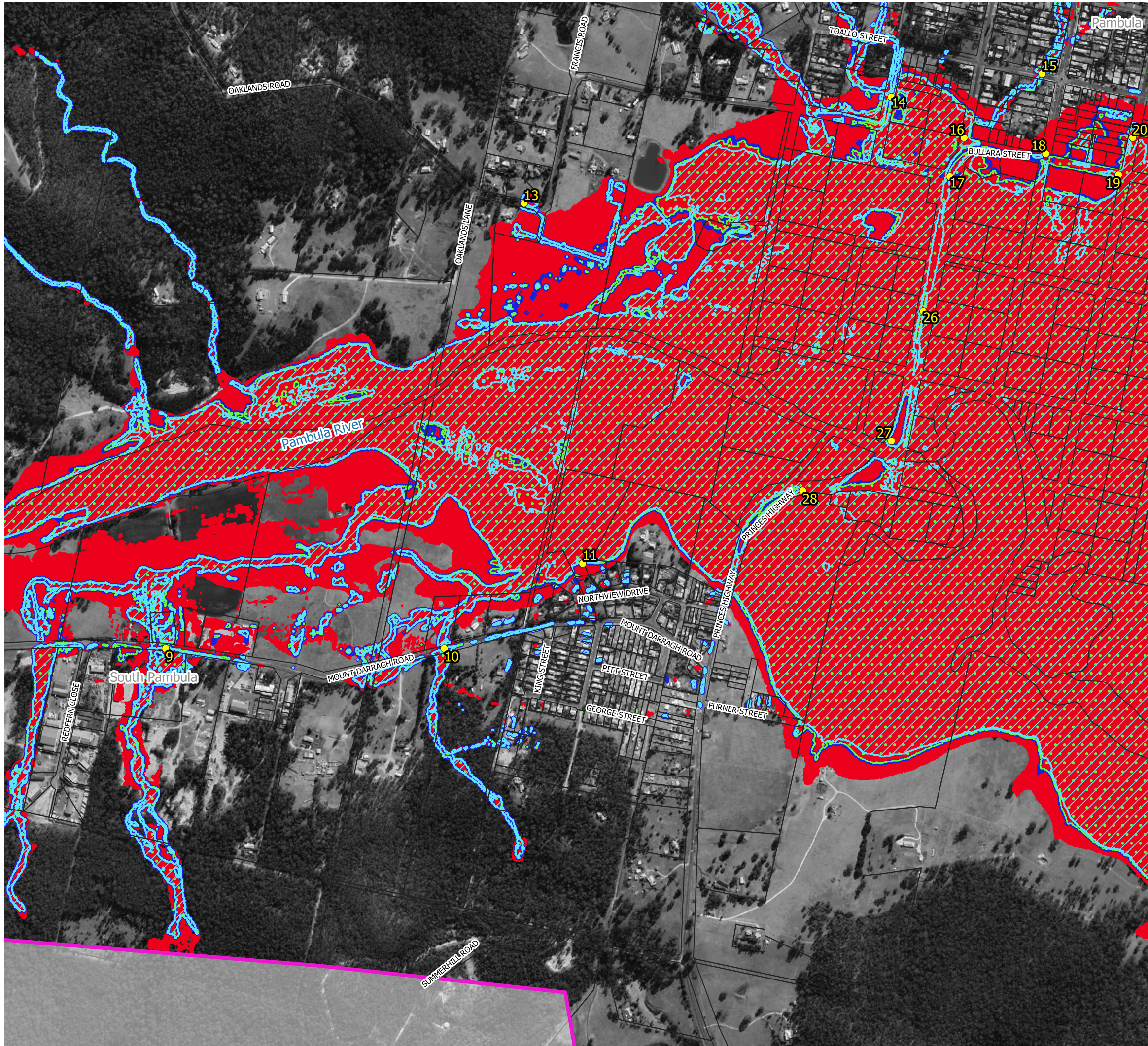


**Figure J1.4  
Road Overtopping Points**

Prepared By:  
 **Catchment Simulation Solutions**  
Suite 10.01, 70 Phillip St  
Sydney, NSW 2000

File Name: Figure J1 Road Overtopping Points

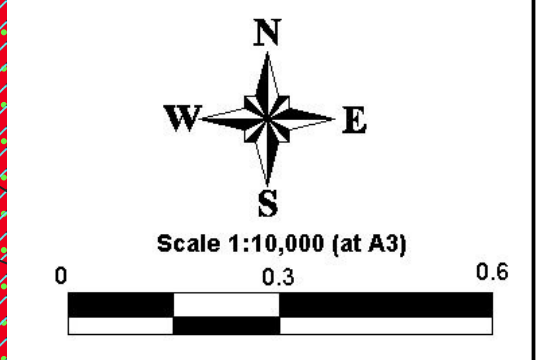




**LEGEND**

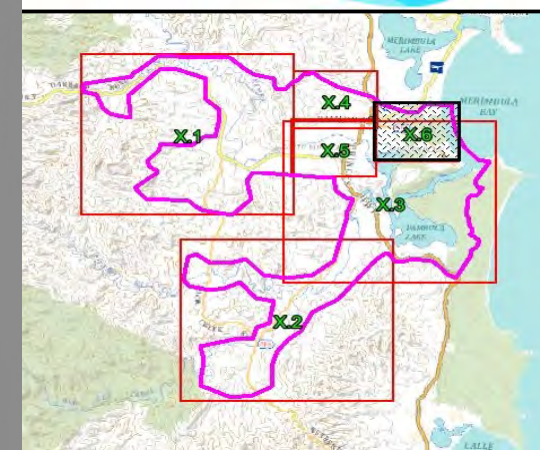
- 5% AEP Flood Inundation Extent
- 1% AEP Flood Inundation Extent
- 0.5% AEP Flood Inundation Extent
- PMF Inundation Extent
- Road Overtopping Point

Notes:  
 Aerial photograph: Google Satellite 2019  
 Only areas subject to inundation depths of more than 0.1 metres are displayed



**Figure J1.5  
 Road Overtopping Points**

Prepared By:  
 Catchment Simulation Solutions  
 Suite 10.01, 70 Phillip St  
 Sydney, NSW 2000



**LEGEND**

- 5% AEP Flood Inundation Extent
- 1% AEP Flood Inundation Extent
- 0.5% AEP Flood Inundation Extent
- PMF Inundation Extent
- Road Overtopping Point

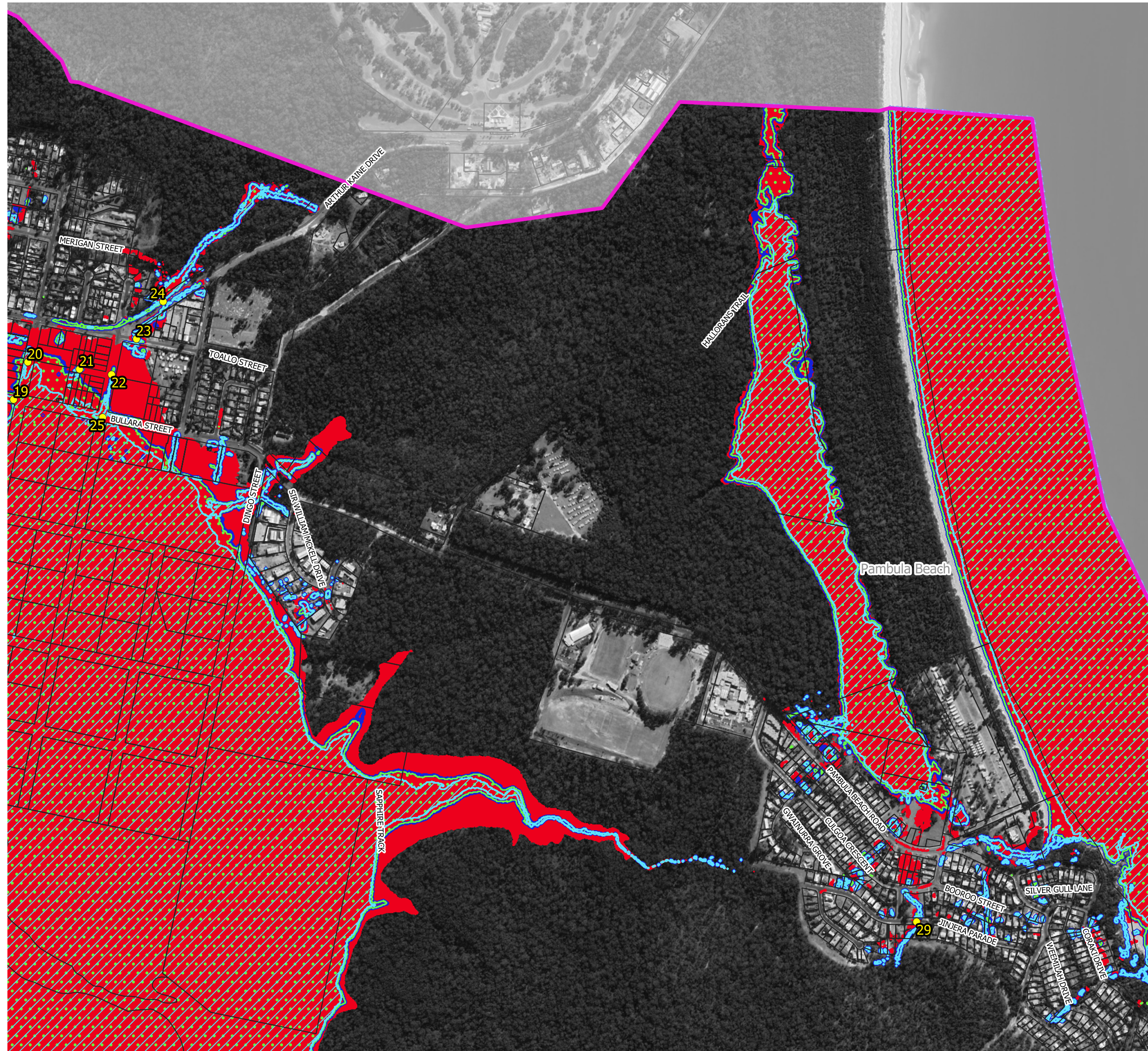
Notes:  
 Aerial photograph: Google Satellite 2019  
 Only areas subject to inundation depths of more than 0.1 metres are displayed

Scale 1:10,000 (at A3)

**Figure J1.6**  
**Road Overtopping Points**

Prepared By:  
**Catchment Simulation Solutions**  
 Suite 10.01, 70 Phillip St  
 Sydney, NSW 2000

File Name: Figure J1 Road Overtopping Points



ID	Road Name	5%AEP			1%AEP			0.5%AEP			PMF		
		Time Road First Inundated (hours)	Duration Inundated (hours)	Peak Hazard	Time Road First Inundated (hours)	Duration Inundated (hours)	Peak Hazard	Time Road First Inundated (hours)	Duration Inundated (hours)	Peak Hazard	Time Road First Inundated (hours)	Duration Inundated (hours)	Peak Hazard
1	Mount Darragh Rd										0.41	5.60	H6
2	Mount Darragh Rd										1.51	4.59	H4
3	Mount Darragh Rd										1.72	3.13	H2
4	Mount Darragh Rd										1.81	3.66	H6
5	off Blairlands Rd	2.02	12.49	H5	1.49	12.61	H5	1.39	12.63	H5	0.43	5.85	H6
6	Blairlands Rd										1.45	3.25	H5
7	Back Creek Rd										1.31	3.43	H5
8	Mount Darragh Rd										1.43	4.98	H6
9	Mount Darragh Rd	2.31	1.11	H1	6.75	3.06	H1	5.64	4.30	H1	1.26	4.98	H2
10	Mount Darragh Rd	0.16	0.46	H1	0.13	0.50	H1	0.12	0.51	H1	1.00	4.16	H2
11	off Northview Dr							5.16	0.76	H1	2.28	3.83	H5
12	off Oaklands Rd	4.97	3.62	H1	4.81	5.20	H2	4.53	5.70	H2	0.61	5.21	H4
13	Oaklands Rd							1.48	4.88	H1	1.18	4.67	H3
14	Bega St							2.44	9.81	H3	1.79	5.32	H6
15	Toallo St										0.76	3.58	H2
16	Monaro St	6.35	6.75	H3	5.51	7.58	H3	5.30	7.80	H3	1.23	4.84	H6
17	A1 Princes Hwy				9.70	5.30	H1	9.00	12.00	H2	2.25	10.00	H5
18	A1 Princes Hwy										3.34	2.77	H5
19	Bullara St	9.61	7.17	H3	6.84	8.50	H4	6.48	8.72	H4	1.96	5.12	H6
20	Merimbola St				9.58	3.50	H3	8.96	4.11	H3	2.86	3.16	H6
21	Martin St							3.57	3.27	H1	1.01	5.35	H5
22	Narregol St										4.06	2.08	H5
23	Toallo St										1.76	3.05	H1
24	Arthur Kaine Dr										1.00	5.36	H3
25	Bullara St				10.55	2.37	H2	9.91	3.28	H3	2.53	4.27	H5
26	A1 Princes Hwy				7.75	5.00	H1	7.25	6.75	H2	2.25	10.75	H5
27	A1 Princes Hwy										4.43	1.68	H4
28	A1 Princes Hwy	7.26	5.74	H1	6.22	6.78	H5	7.26	7.03	H5	2.13	3.99	H5
29	Jinjera Parade										0.56	1.03	H1
30	A1 Princes Hwy							6.18	6.88	H2	3.06	2.95	H5
31	A1 Princes Hwy										3.54	2.52	H6
32	Nethercote Rd	5.59	7.44	H5	4.80	8.23	H6	4.59	8.44	H6	1.66	4.41	H6
33	Broadwater Rd										2.07	4.05	H6
34	Nethercote Rd				6.20	8.80	H5	6.00	7.30	H5	1.42	4.65	H6
35	Nethercote Rd										0.72	5.41	H6
36	Nethercote Rd	5.43	7.85	H5	4.46	8.86	H5	4.14	9.14	H5	0.85	5.19	H6
37	Ruggs Rd	5.00	8.50	H5	3.25	12.75	H4	1.25	20.25	H4	0.50	8.70	H5
38	Lochview Farm Rd	1.75	11.25	H5	1.43	11.57	H5	1.86	11.14	H5	0.67	5.33	H6