

**LEGEND**

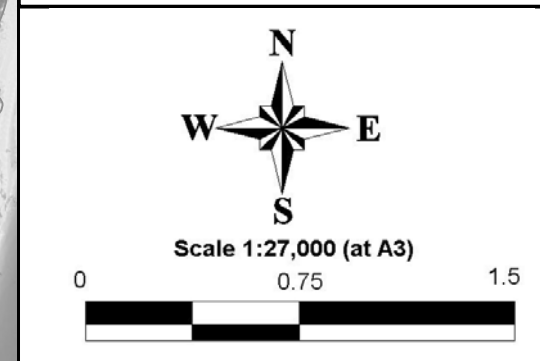
HHWSS Inundation Extent for Existing Conditions

HHWSS Inundation Extent with 0.9m Sea Level Rise

Depths (m)

- 0.1 to 0.5
- 0.5 to 1.0
- 1.0 to 2.0
- 2.0 to 5.0
- > 5

Notes:  
Aerial photograph: Google Satellite 2019  
Only areas subject to inundation depths of more than 0.1 metres are displayed

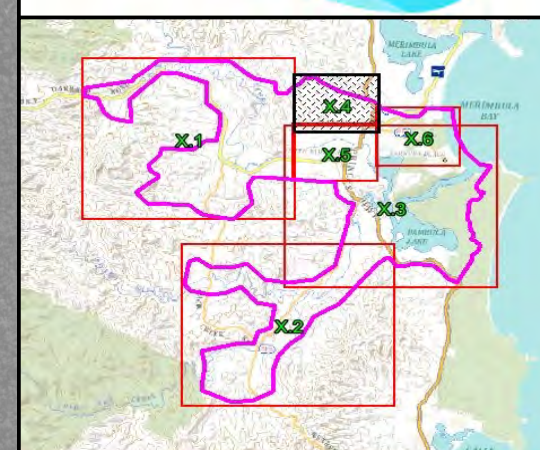


**Figure 49.3**  
**Peak HHWSS Water Depths with 0.9m Sea Level Rise and 0.9m Increase in River Entrance Elevation**

Prepared By:  
**Catchment Simulation Solutions**  
Suite 10.01, 70 Phillip St  
Sydney, NSW 2000

File Name: Figure 49 Peak HHWSS Water Depths with 0.9m Sea Level Rise and 0.9m Increase in River Entrance Elevation





**LEGEND**

HHWSS Inundation Extent for Existing Conditions

HHWSS Inundation Extent with 0.9m Sea Level Rise

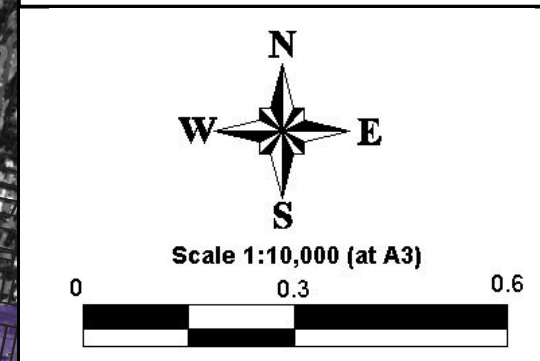
Depths (m)

- 0.1 to 0.5
- 0.5 to 1.0
- 1.0 to 2.0
- 2.0 to 5.0
- > 5

Notes:

Aerial photograph: Google Satellite 2019

Only areas subject to inundation depths of more than 0.1 metres are displayed



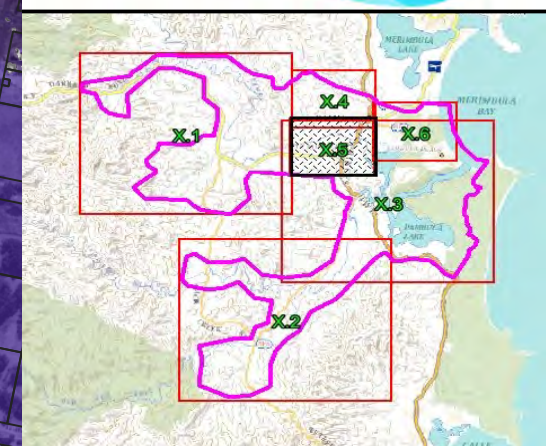
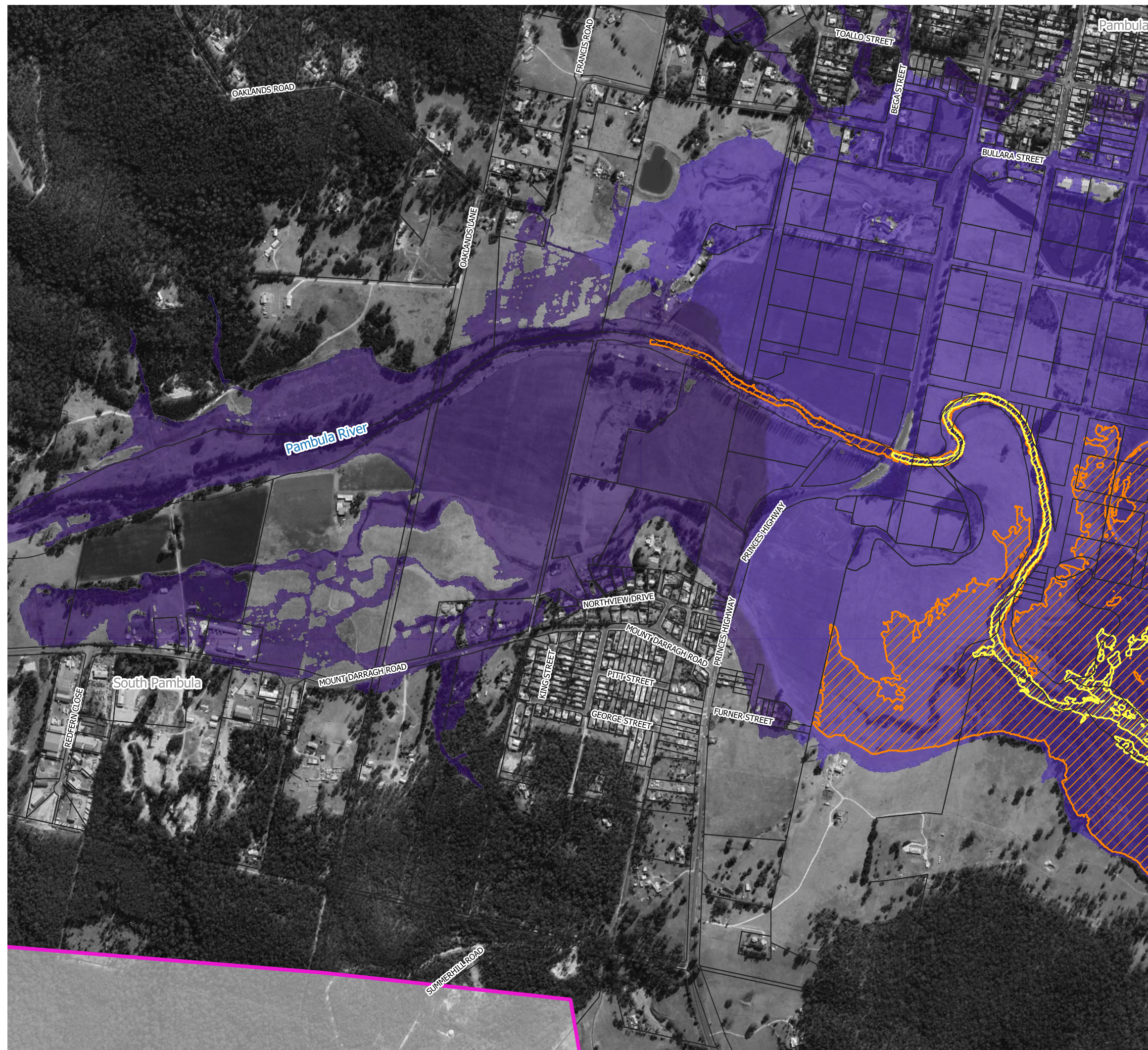
**Figure 49.4**  
**Peak HHWSS Water Depths**  
**with 0.9m Sea Level Rise and**  
**0.9m Increase in River**  
**Entrance Elevation**

Prepared By:



**Catchment Simulation Solutions**  
Suite 10.01, 70 Phillip St  
Sydney, NSW 2000

File Name: Figure 49 Peak HHWSS Water Depths with 0.9m Sea Level Rise and 0.9m Increase in River Entrance Elevation










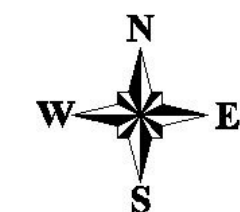
### LEGEND

-  HHWSS Inundation Extent for Existing Conditions
-  HHWSS Inundation Extent with 0.9m Sea Level Rise

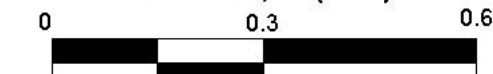
#### Depths (m)

-  0.1 to 0.5
-  0.5 to 1.0
-  1.0 to 2.0
-  2.0 to 5.0
-  > 5

Notes:  
Aerial photograph: Google Satellite 2019  
Only areas subject to inundation depths of more than 0.1 metres are displayed



Scale 1:10,000 (at A3)



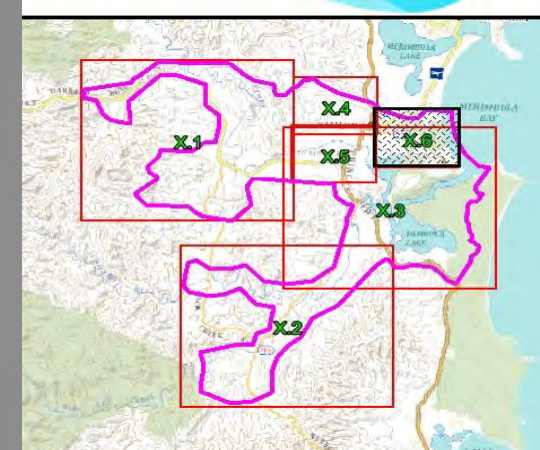
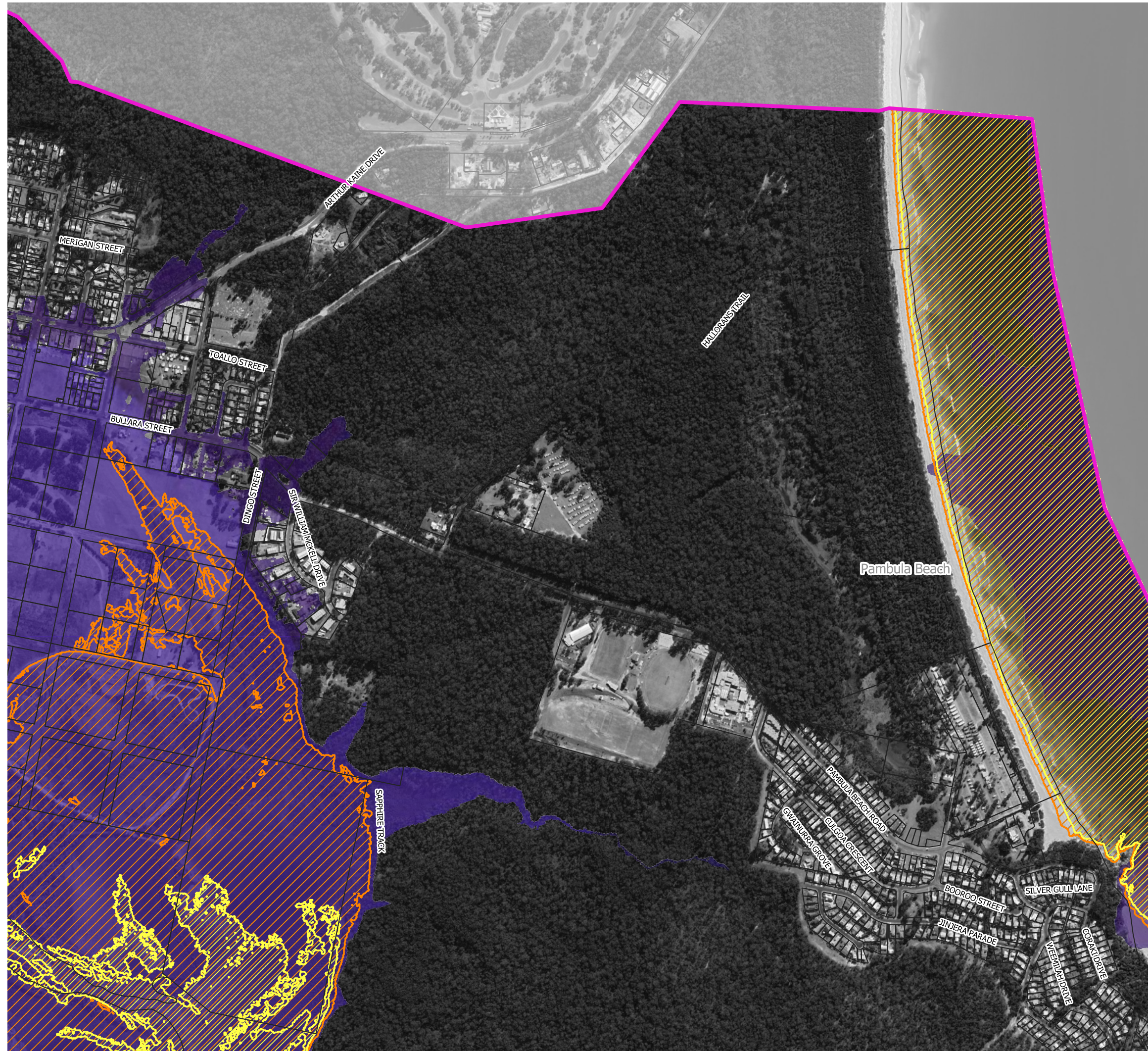
**Figure 49.5**  
**Peak HHWSS Water Depths**  
**with 0.9m Sea Level Rise and**  
**0.9m Increase in River**  
**Entrance Elevation**

Prepared By:

 **Catchment Simulation Solutions**  
Suite 10.01, 70 Phillip St  
Sydney, NSW 2000

File Name: Figure 49 Peak HHWSS Water Depths with 0.9m Sea Level Rise and 0.9m Increase in River Entrance Elevation

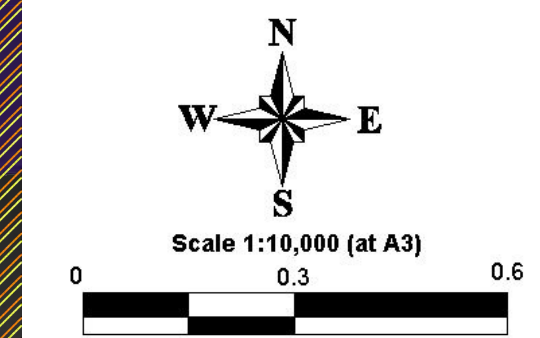




### LEGEND

- HHWSS Inundation Extent for Existing Conditions
  - HHWSS Inundation Extent with 0.9m Sea Level Rise
- Depths (m)
- 0.1 to 0.5
  - 0.5 to 1.0
  - 1.0 to 2.0
  - 2.0 to 5.0
  - > 5

Notes:  
Aerial photograph: Google Satellite 2019  
Only areas subject to inundation depths of more than 0.1 metres are displayed

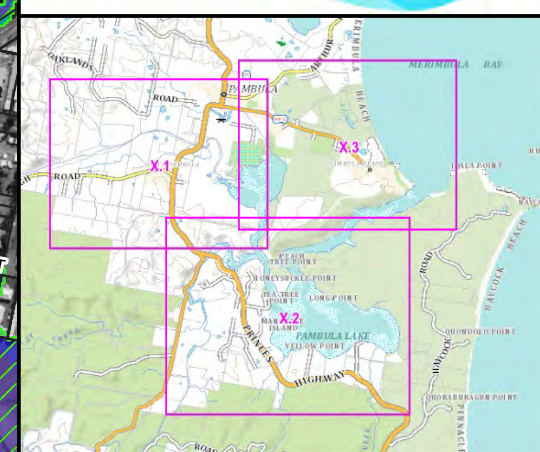
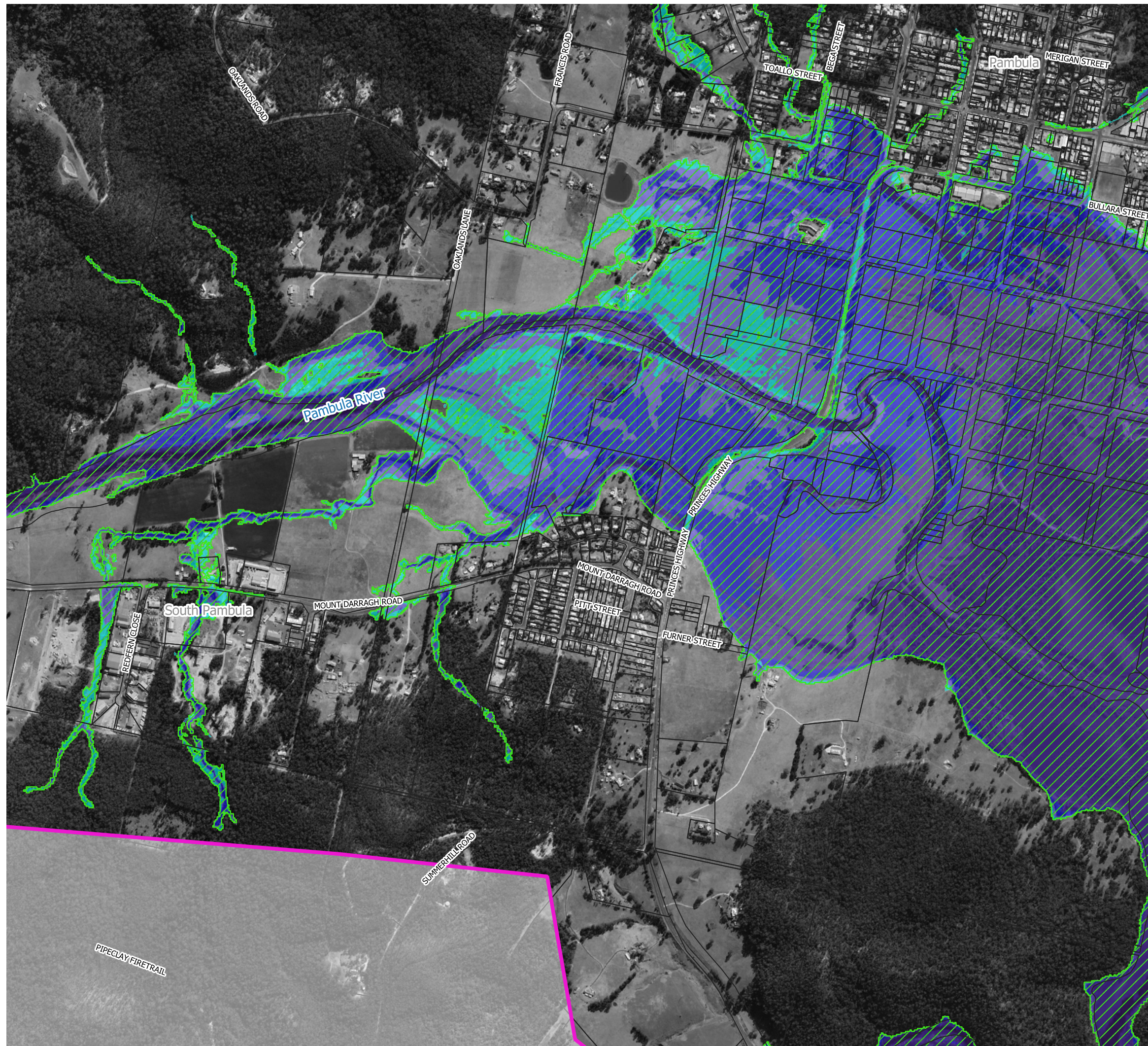


**Figure 49.6**  
**Peak HHWSS Water Depths with 0.9m Sea Level Rise and 0.9m Increase in River Entrance Elevation**

Prepared By:  
**Catchment Simulation Solutions**  
Suite 10.01, 70 Phillip St  
Sydney, NSW 2000

File Name: Figure 49 Peak HHWSS Water Depths with 0.9m Sea Level Rise and 0.9m Increase in River Entrance Elevation





#### LEGEND

1% AEP Inundation Extent for Existing Conditions

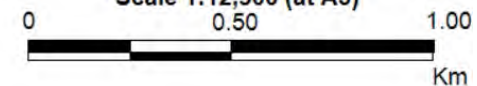
Depths (m)

- 0.1 to 0.5
- 0.5 to 1.0
- 1.0 to 2.0
- 2.0 to 5.0
- > 5

Notes:  
Aerial photograph: Google Satellite 2019  
Only areas subject to inundation depths of more than 0.1 metres are displayed



Scale 1:12,500 (at A3)



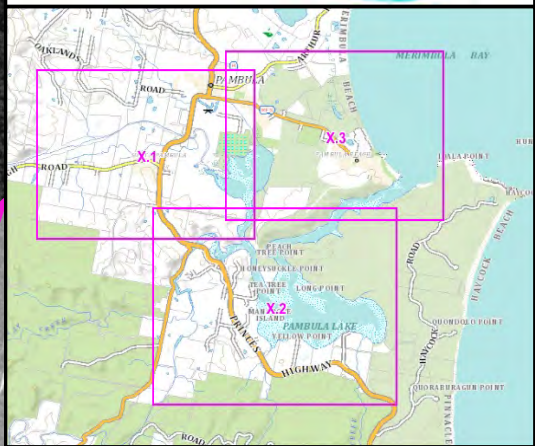
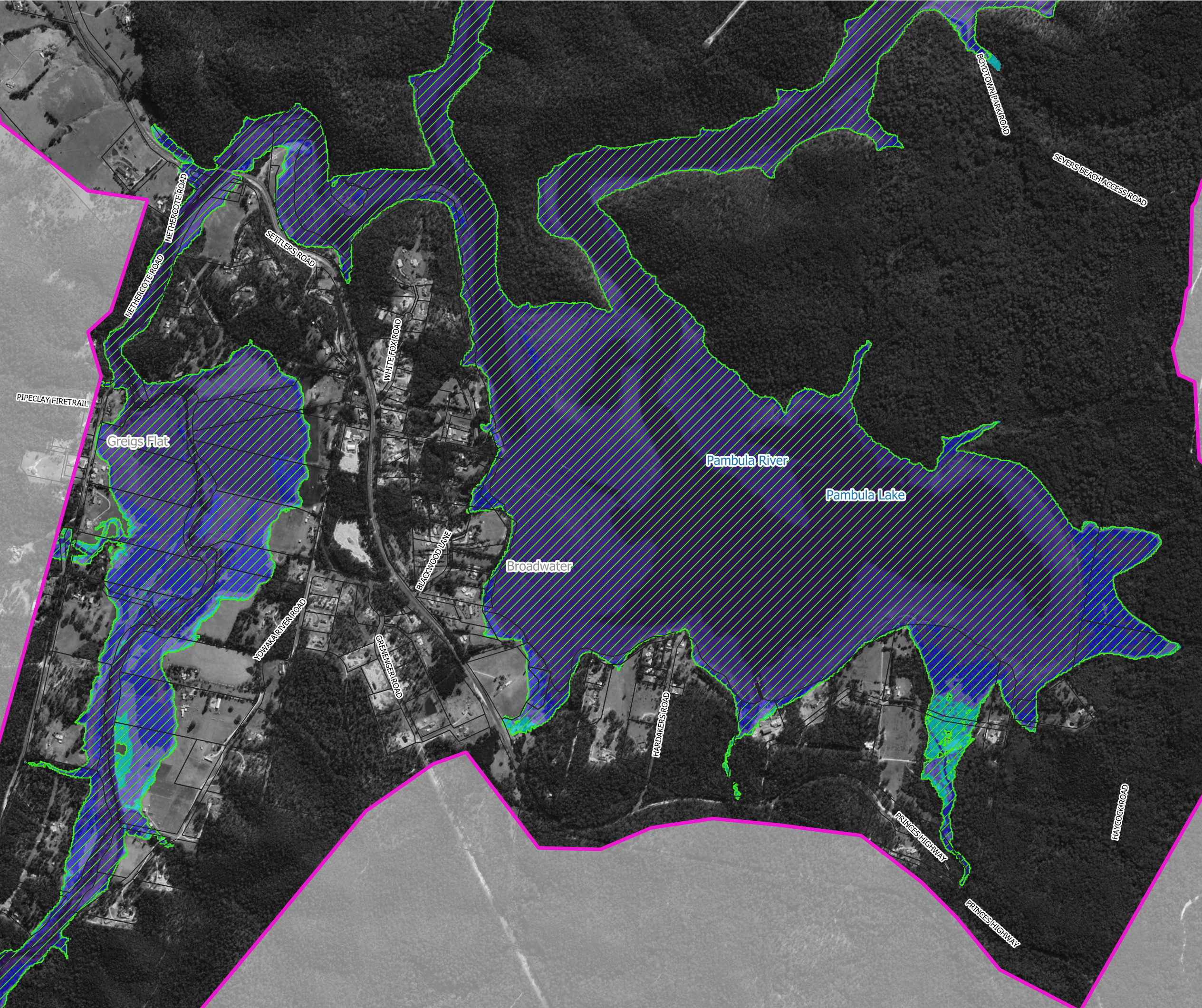
**Figure 50.1**  
**Peak 1% AEP Water Depths**  
**with 0.4m Sea Level Rise**

Prepared By:

**Catchment Simulation Solutions**  
Suite 10.01, 70 Phillip St  
Sydney, NSW 2000

File Name: Figure 50 Peak 1% AEP Water Depths with 0.4m Sea Level Rise

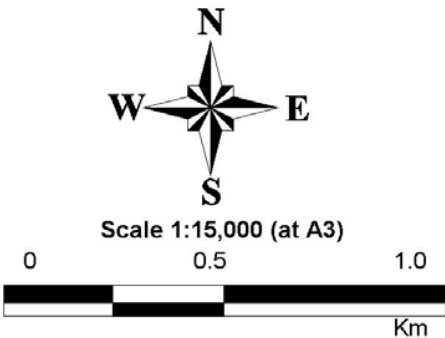




**LEGEND**

- 1% AEP Inundation Extent for Existing Conditions
- Depths (m)
- 0.1 to 0.5
  - 0.5 to 1.0
  - 1.0 to 2.0
  - 2.0 to 5.0
  - > 5

Notes:  
Aerial photograph: Google Satellite 2019  
Only areas subject to inundation depths of more than 0.1 metres are displayed

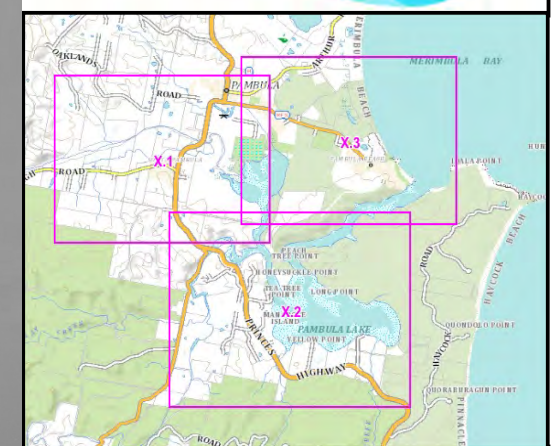
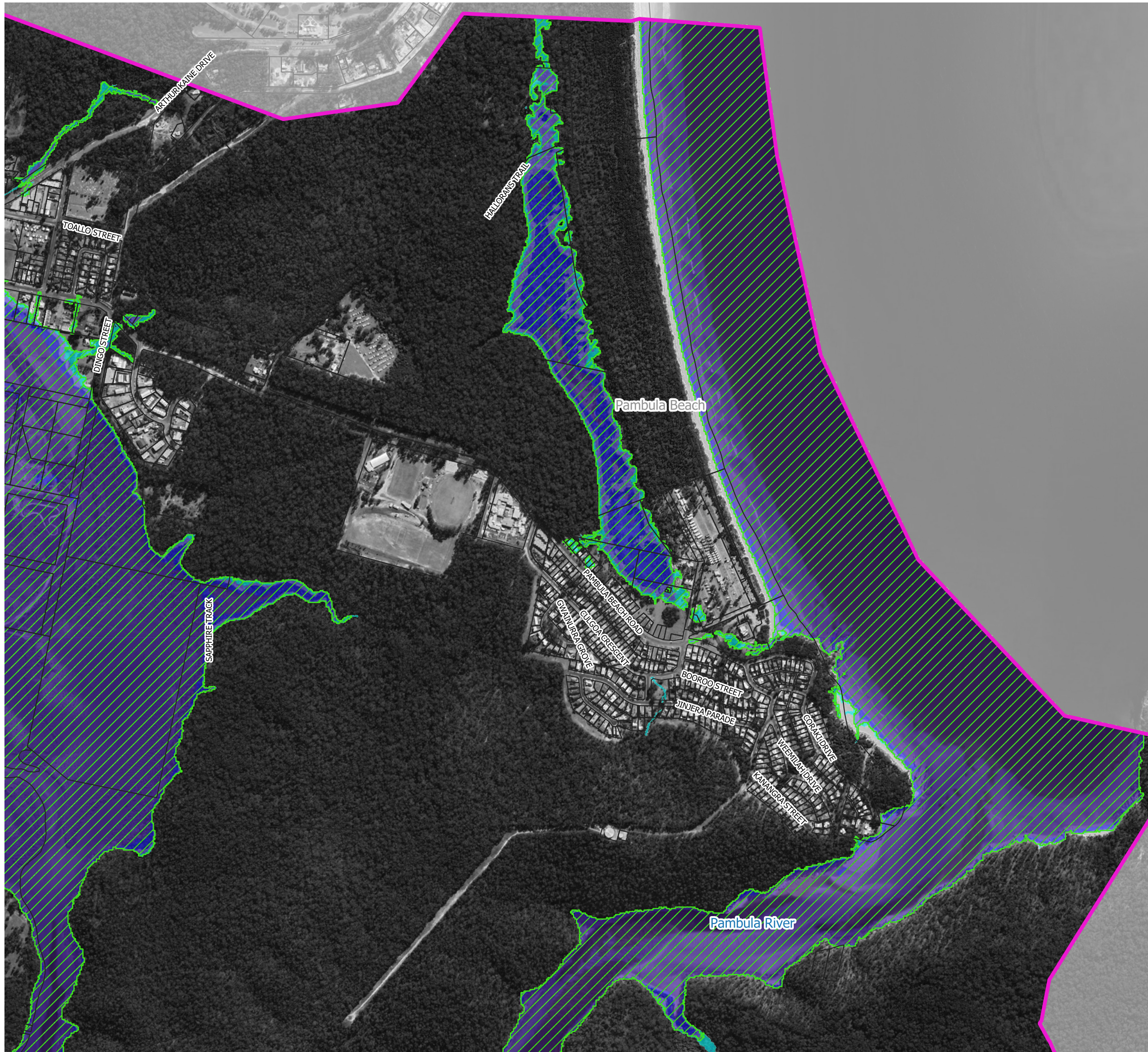


**Figure 50.2**  
**Peak 1% AEP Water Depths**  
**with 0.4m Sea Level Rise**

Prepared By:  
**Catchment Simulation Solutions**  
Suite 10.01, 70 Phillip St  
Sydney, NSW 2000

File Name: Figure 50 Peak 1% AEP Water Depths with 0.4m Sea Level Rise

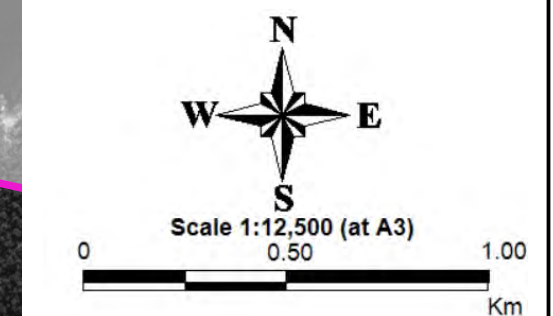




### LEGEND

- 1% AEP Inundation Extent for Existing Conditions
- Depths (m)
- 0.1 to 0.5
  - 0.5 to 1.0
  - 1.0 to 2.0
  - 2.0 to 5.0
  - > 5

Notes:  
Aerial photograph: Google Satellite 2019  
Only areas subject to inundation depths of more than 0.1 metres are displayed

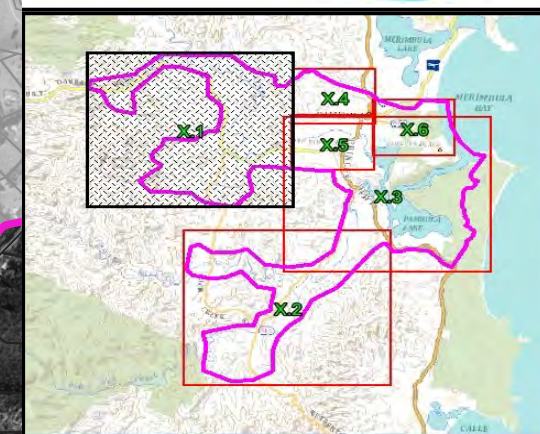
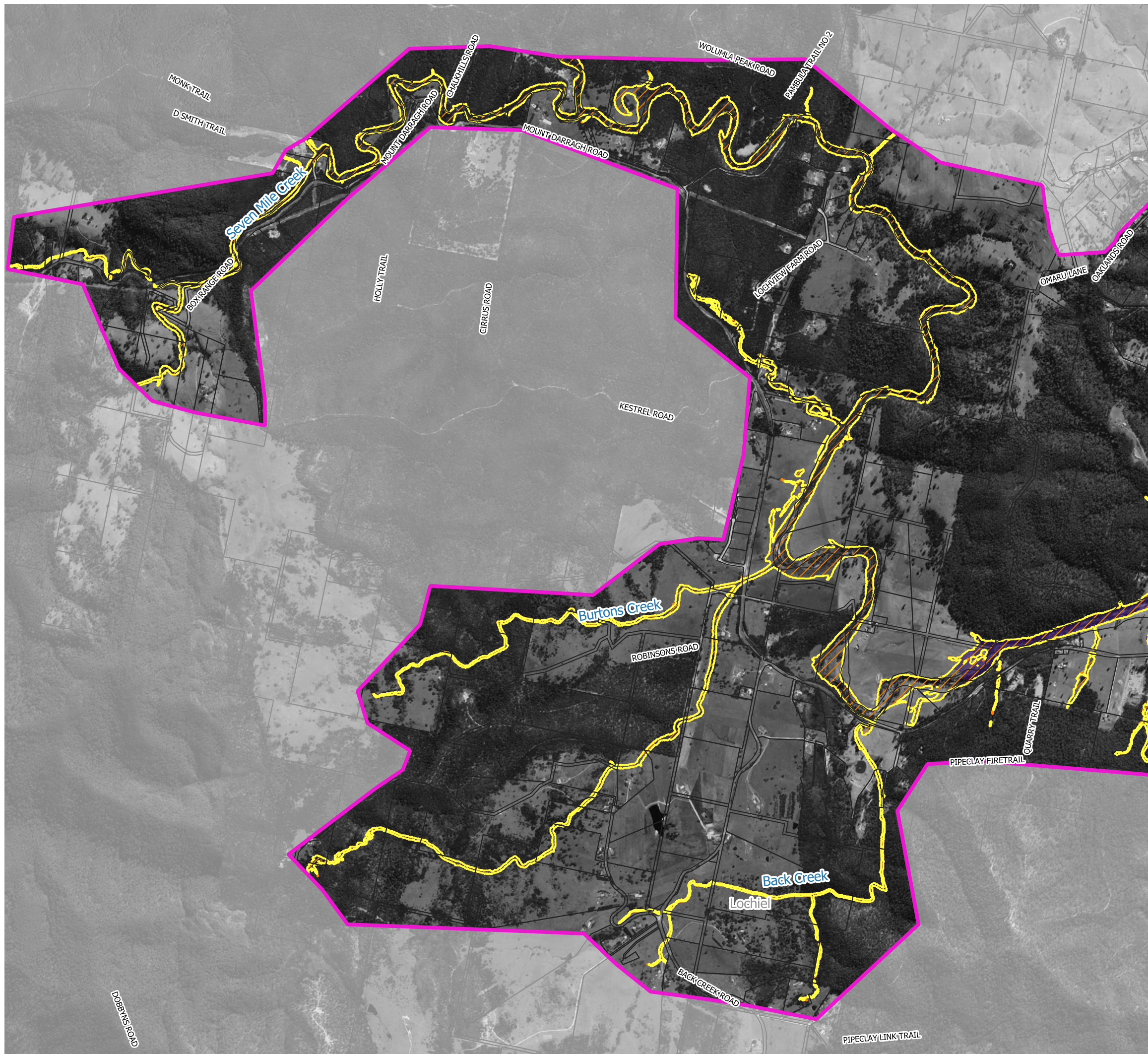


**Figure 50.3**  
**Peak 1% AEP Water Depths**  
**with 0.4m Sea Level Rise**

Prepared By:  
**Catchment Simulation Solutions**  
Suite 10.01, 70 Phillip St  
Sydney, NSW 2000

File Name: Figure 50 Peak 1% AEP Water Depths  
with 0.4m Sea Level Rise

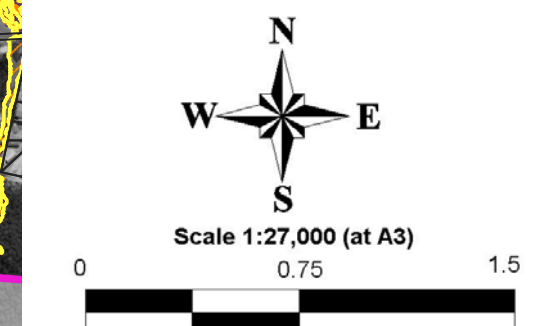




### LEGEND

- 1% AEP Inundation Extent for Existing Conditions
  - 1% AEP Inundation Extent with 0.4m Sea Level Rise
- Depths (m)
- 0.1 to 0.5
  - 0.5 to 1.0
  - 1.0 to 2.0
  - 2.0 to 5.0
  - > 5

Notes:  
Aerial photograph: Google Satellite 2019  
Only areas subject to inundation depths of more than 0.1 metres are displayed

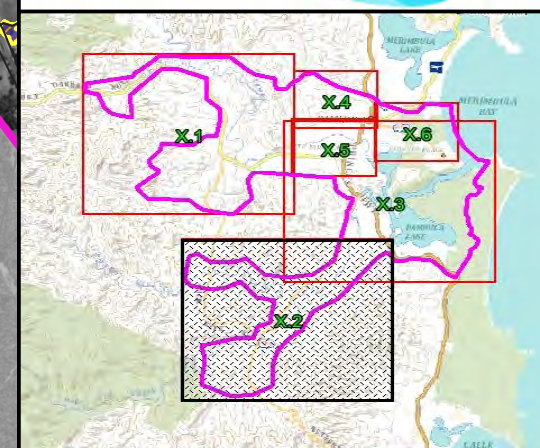
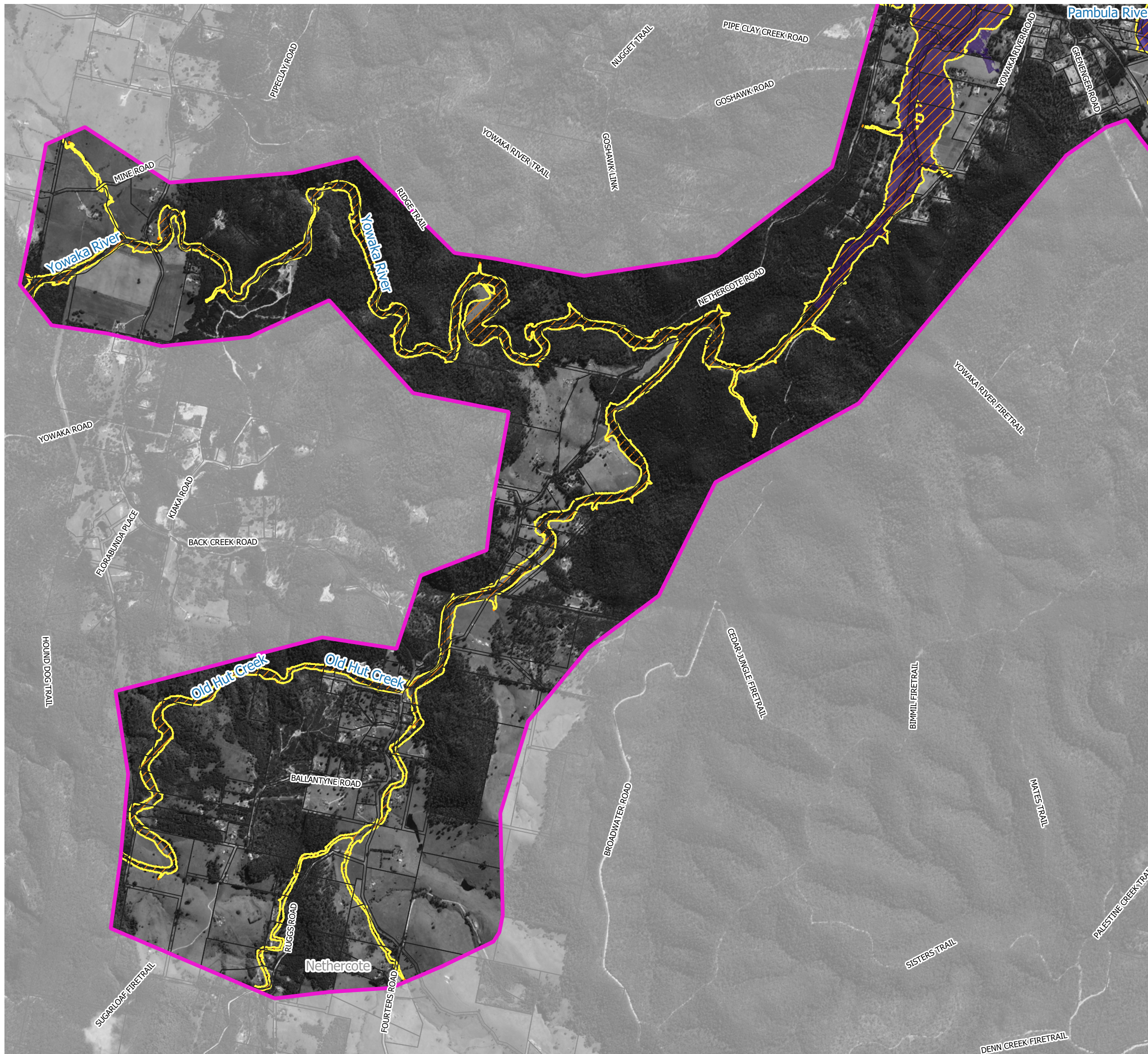


**Figure 51.1**  
**Peak 1% AEP Water Depths**  
**with 0.4m Sea Level Rise and**  
**0.4m Increase in River**  
**Entrance Elevation**

Prepared By:  
**Catchment Simulation Solutions**  
Suite 10.01, 70 Phillip St  
Sydney, NSW 2000

File Name: Figure 51 Peak 1% AEP Water Depths with 0.4m Sea Level Rise and 0.4m Increase in River Entrance Elevation

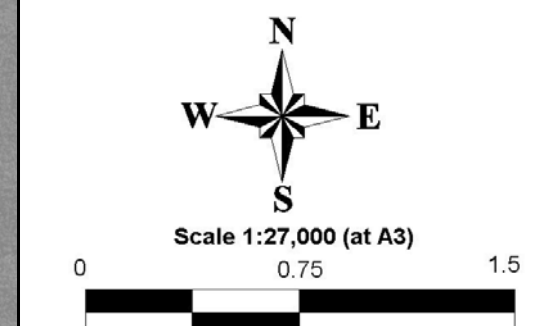




#### LEGEND

- 1% AEP Inundation Extent for Existing Conditions
  - 1% AEP Inundation Extent with 0.4m Sea Level Rise
- Depths (m)
- 0.1 to 0.5
  - 0.5 to 1.0
  - 1.0 to 2.0
  - 2.0 to 5.0
  - > 5

Notes:  
Aerial photograph: Google Satellite 2019  
Only areas subject to inundation depths of more than 0.1 metres are displayed

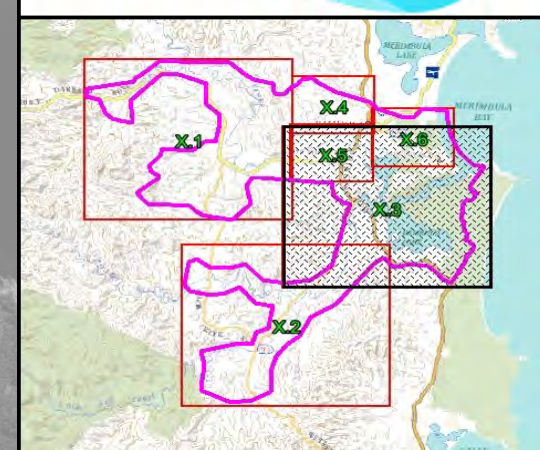
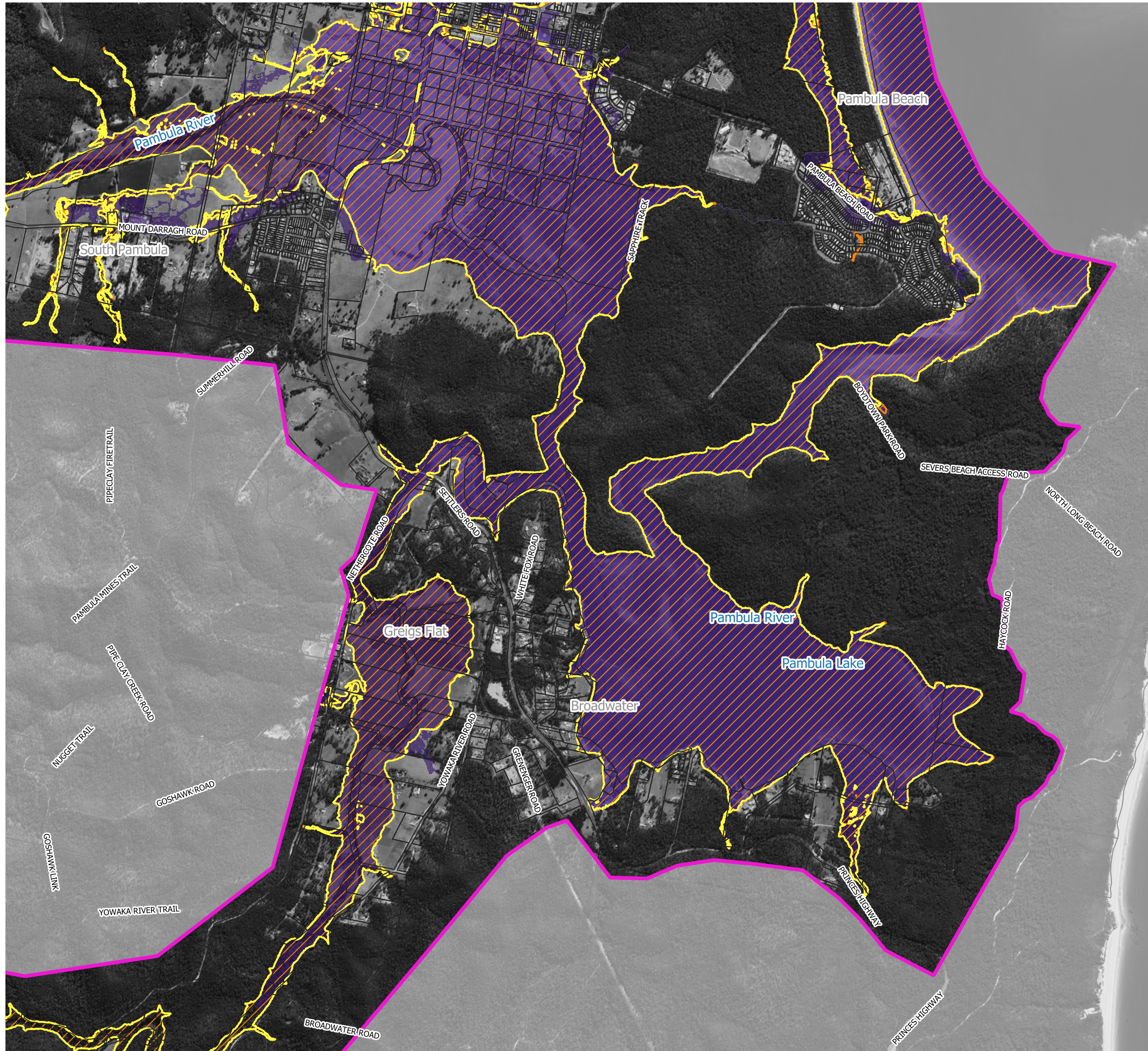


**Figure 51.2**  
**Peak 1% AEP Water Depths**  
**with 0.4m Sea Level Rise and**  
**0.4m Increase in River**  
**Entrance Elevation**

Prepared By:  
**Catchment Simulation Solutions**  
Suite 10.01, 70 Phillip St  
Sydney, NSW 2000

File Name: Figure 51 Peak 1% AEP Water Depths with 0.4m Sea Level Rise and 0.4m Increase in River Entrance Elevation





**LEGEND**

1% AEP Inundation Extent for Existing Conditions

1% AEP Inundation Extent with 0.4m Sea Level Rise

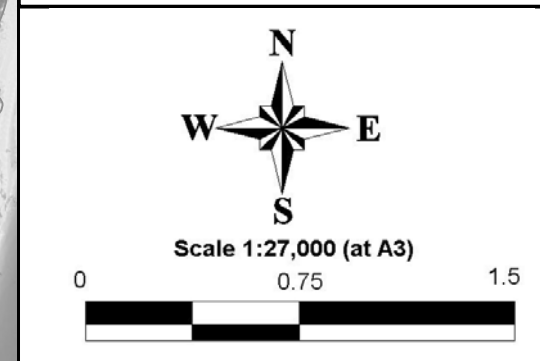
Depths (m)

- 0.1 to 0.5
- 0.5 to 1.0
- 1.0 to 2.0
- 2.0 to 5.0
- > 5

Notes:

Aerial photograph: Google Satellite 2019

Only areas subject to inundation depths of more than 0.1 metres are displayed



**Figure 51.3**  
**Peak 1% AEP Water Depths**  
**with 0.4m Sea Level Rise and**  
**0.4m Increase in River**  
**Entrance Elevation**

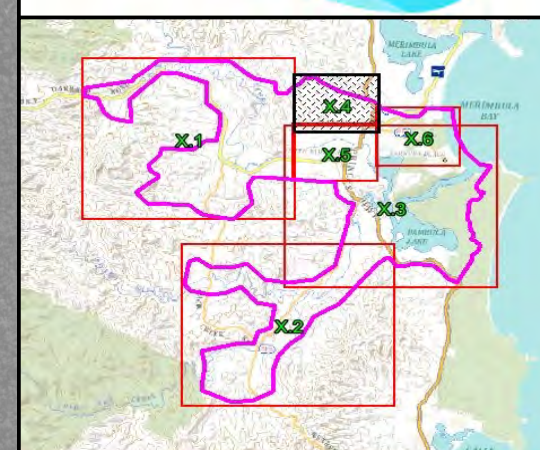
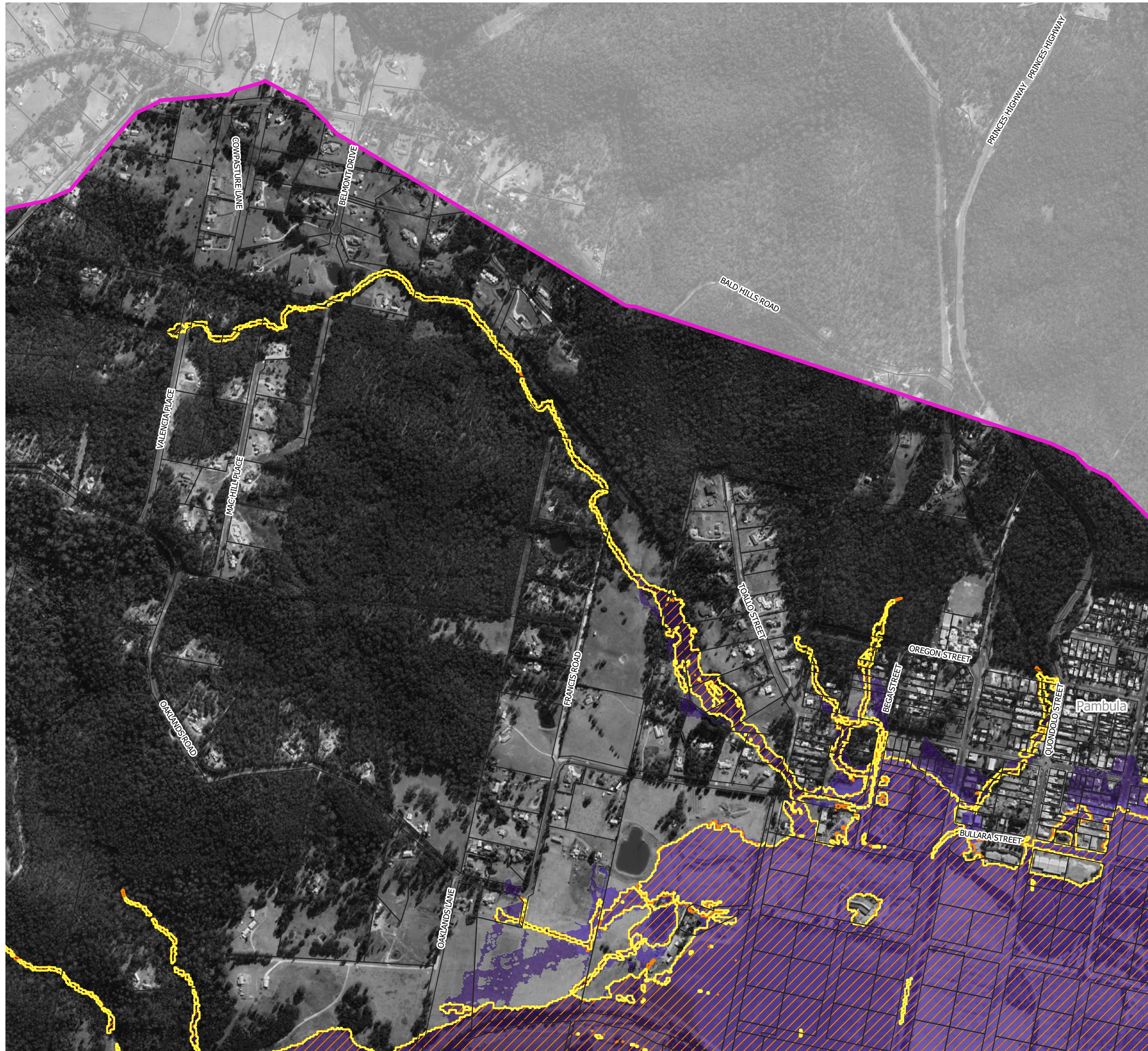
Prepared By:

**Catchment Simulation Solutions**

Suite 10.01, 70 Phillip St  
Sydney, NSW 2000

File Name: Figure 51 Peak 1% AEP Water Depths with 0.4m Sea Level Rise and 0.4m Increase in River Entrance Elevation





**LEGEND**

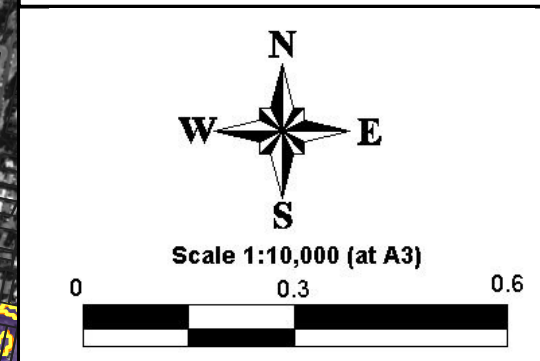
1% AEP Inundation Extent for Existing Conditions

1% AEP Inundation Extent with 0.4m Sea Level Rise

Depths (m)

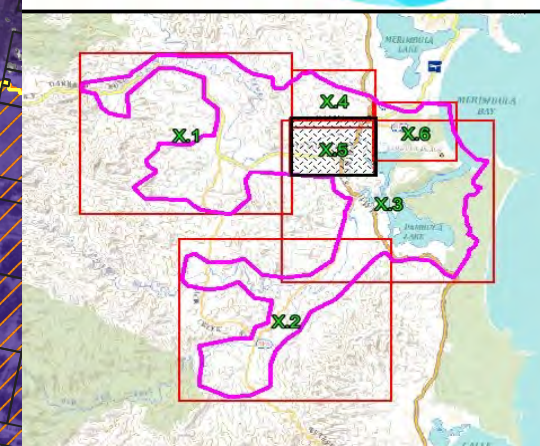
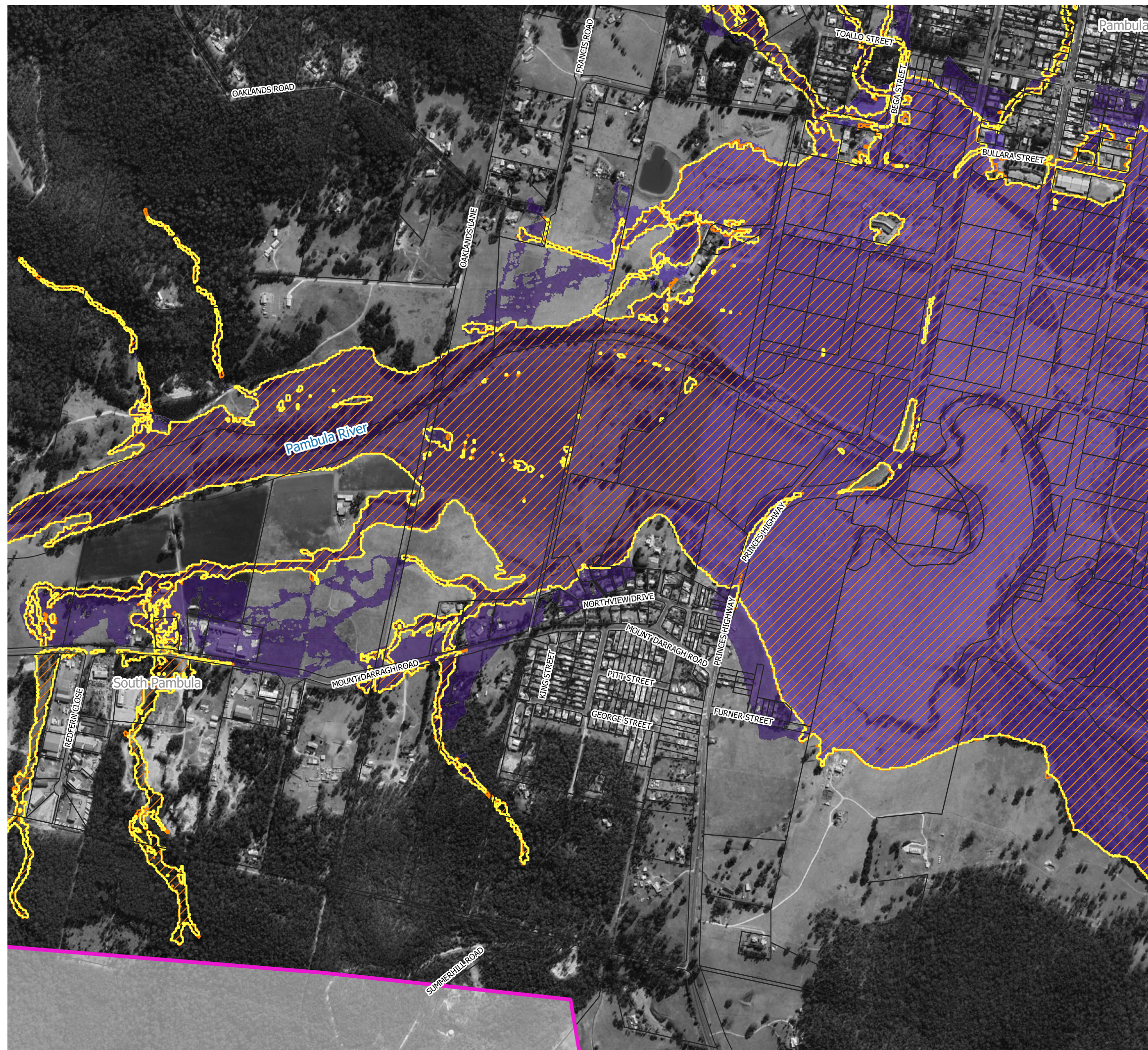
- 0.1 to 0.5
- 0.5 to 1.0
- 1.0 to 2.0
- 2.0 to 5.0
- > 5

Notes:  
Aerial photograph: Google Satellite 2019  
Only areas subject to inundation depths of more than 0.1 metres are displayed



**Figure 51.4**  
**Peak 1% AEP Water Depths**  
**with 0.4m Sea Level Rise and**  
**0.4m Increase in River**  
**Entrance Elevation**

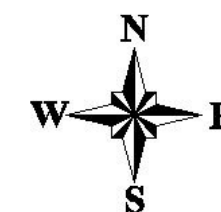




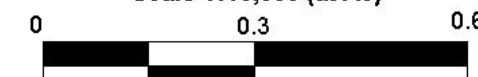
### LEGEND

- 1% AEP Inundation Extent for Existing Conditions
- 1% AEP Inundation Extent with 0.4m Sea Level Rise
- Depths (m)
- 0.1 to 0.5
  - 0.5 to 1.0
  - 1.0 to 2.0
  - 2.0 to 5.0
  - > 5

Notes:  
Aerial photograph: Google Satellite 2019  
Only areas subject to inundation depths of more than 0.1 metres are displayed




Scale 1:10,000 (at A3)



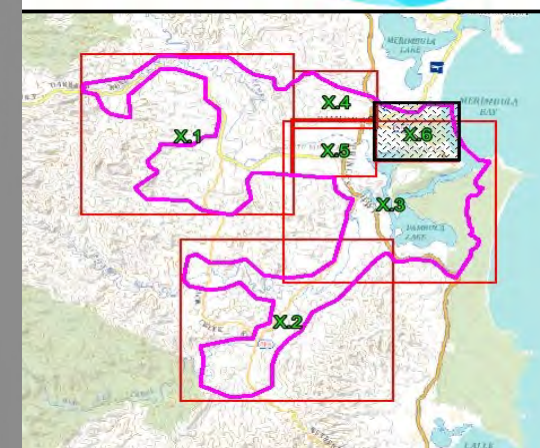
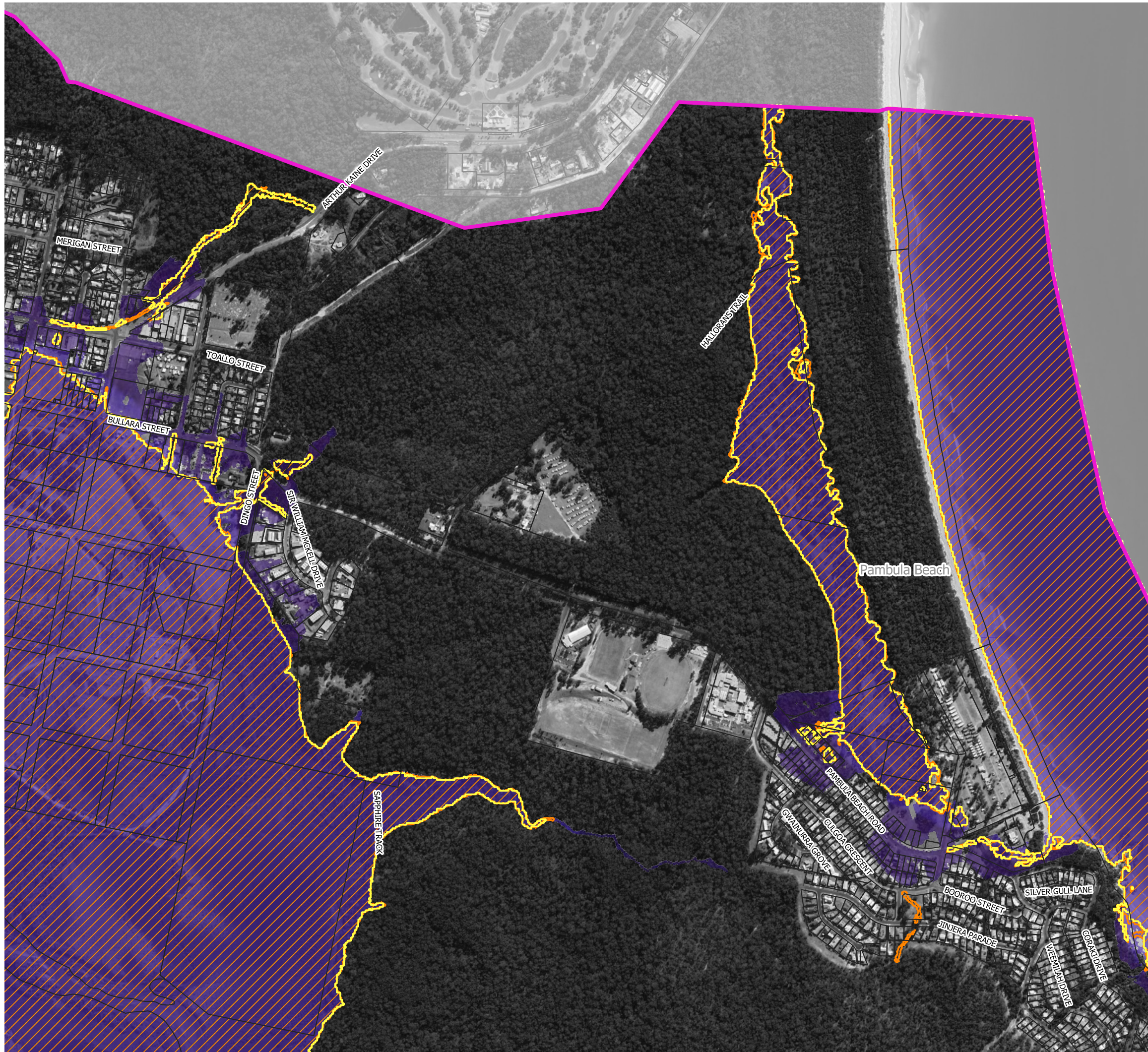
**Figure 51.5**  
**Peak 1% AEP Water Depths**  
**with 0.4m Sea Level Rise and**  
**0.4m Increase in River**  
**Entrance Elevation**

Prepared By:

 **Catchment Simulation Solutions**  
Suite 10.01, 70 Phillip St  
Sydney, NSW 2000

File Name: Figure 51 Peak 1% AEP Water Depths with 0.4m Sea Level Rise and 0.4m Increase in River Entrance Elevation





#### LEGEND

- 1% AEP Inundation Extent for Existing Conditions
- 1% AEP Inundation Extent with 0.4m Sea Level Rise

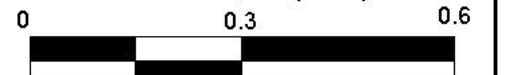
#### Depths (m)

- 0.1 to 0.5
- 0.5 to 1.0
- 1.0 to 2.0
- 2.0 to 5.0
- > 5

Notes:  
Aerial photograph: Google Satellite 2019  
Only areas subject to inundation depths of more than 0.1 metres are displayed




Scale 1:10,000 (at A3)



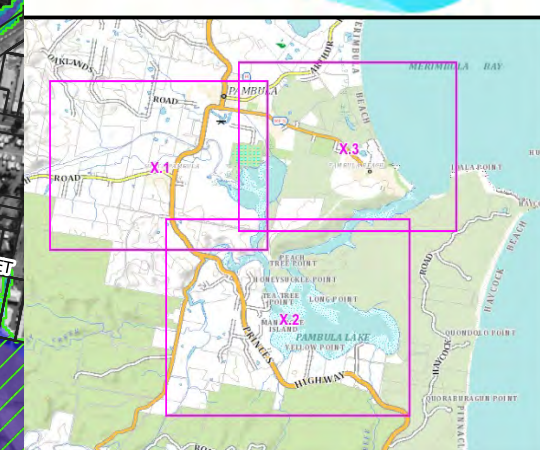
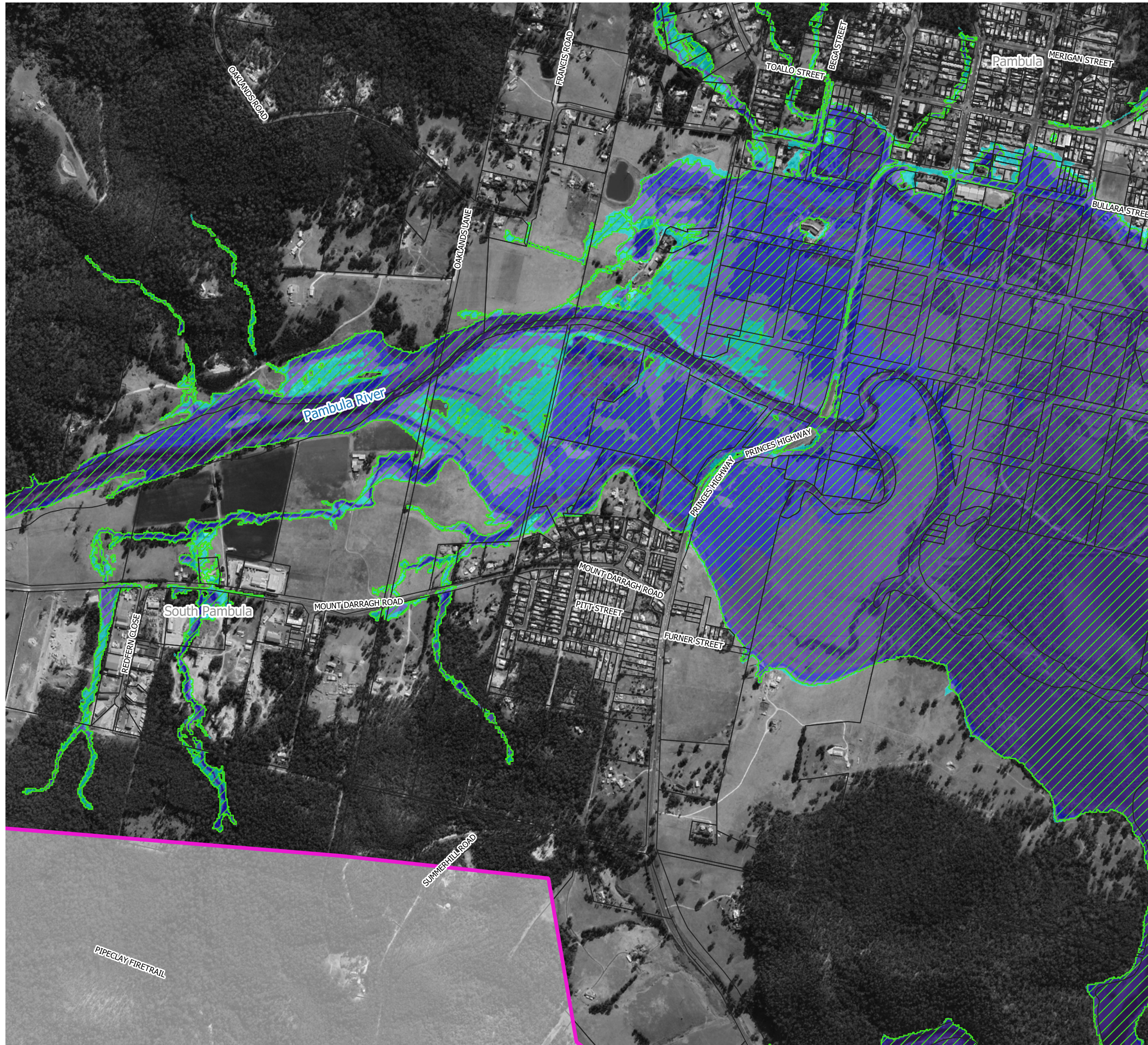
**Figure 51.6**  
**Peak 1% AEP Water Depths**  
**with 0.4m Sea Level Rise and**  
**0.4m Increase in River**  
**Entrance Elevation**

Prepared By:

 **Catchment Simulation Solutions**  
Suite 10.01, 70 Phillip St  
Sydney, NSW 2000

File Name: Figure 51 Peak 1% AEP Water Depths with 0.4m Sea Level Rise and 0.4m Increase in River Entrance Elevation





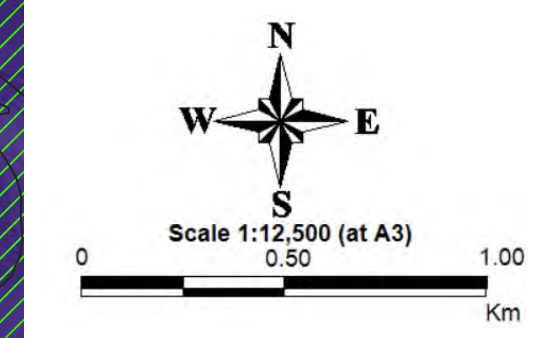
**LEGEND**

1% AEP Inundation Extent for Existing Conditions

Depths (m)

- 0.1 to 0.5
- 0.5 to 1.0
- 1.0 to 2.0
- 2.0 to 5.0
- > 5

Notes:  
Aerial photograph: Google Satellite 2019  
Only areas subject to inundation depths of more than 0.1 metres are displayed

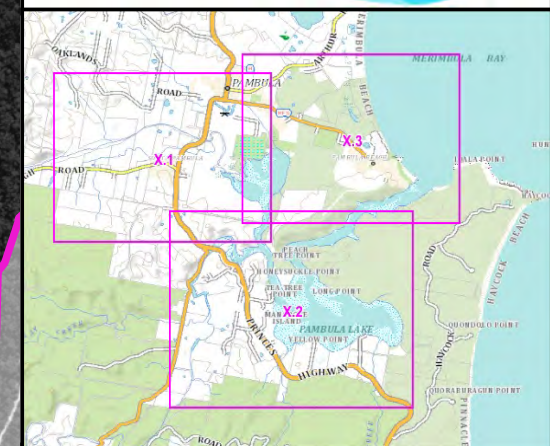


**Figure 52.1**  
**Peak 1% AEP Water Depths**  
**with 0.9m Sea Level Rise**


Prepared By:  
**Catchment Simulation Solutions**  
Suite 10.01, 70 Phillip St  
Sydney, NSW 2000

File Name: Figure 52 Peak 1% AEP Water Depths with 0.9m Sea Level Rise





## LEGEND

 1% AEP Inundation Extent for Existing Conditions

Depths (m)

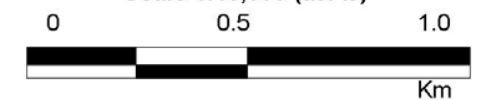
-  0.1 to 0.5
-  0.5 to 1.0
-  1.0 to 2.0
-  2.0 to 5.0
-  > 5

Notes:

Aerial photograph: Google Satellite 2019  
Only areas subject to inundation depths of more than 0.1 metres are displayed



Scale 1:15,000 (at A3)

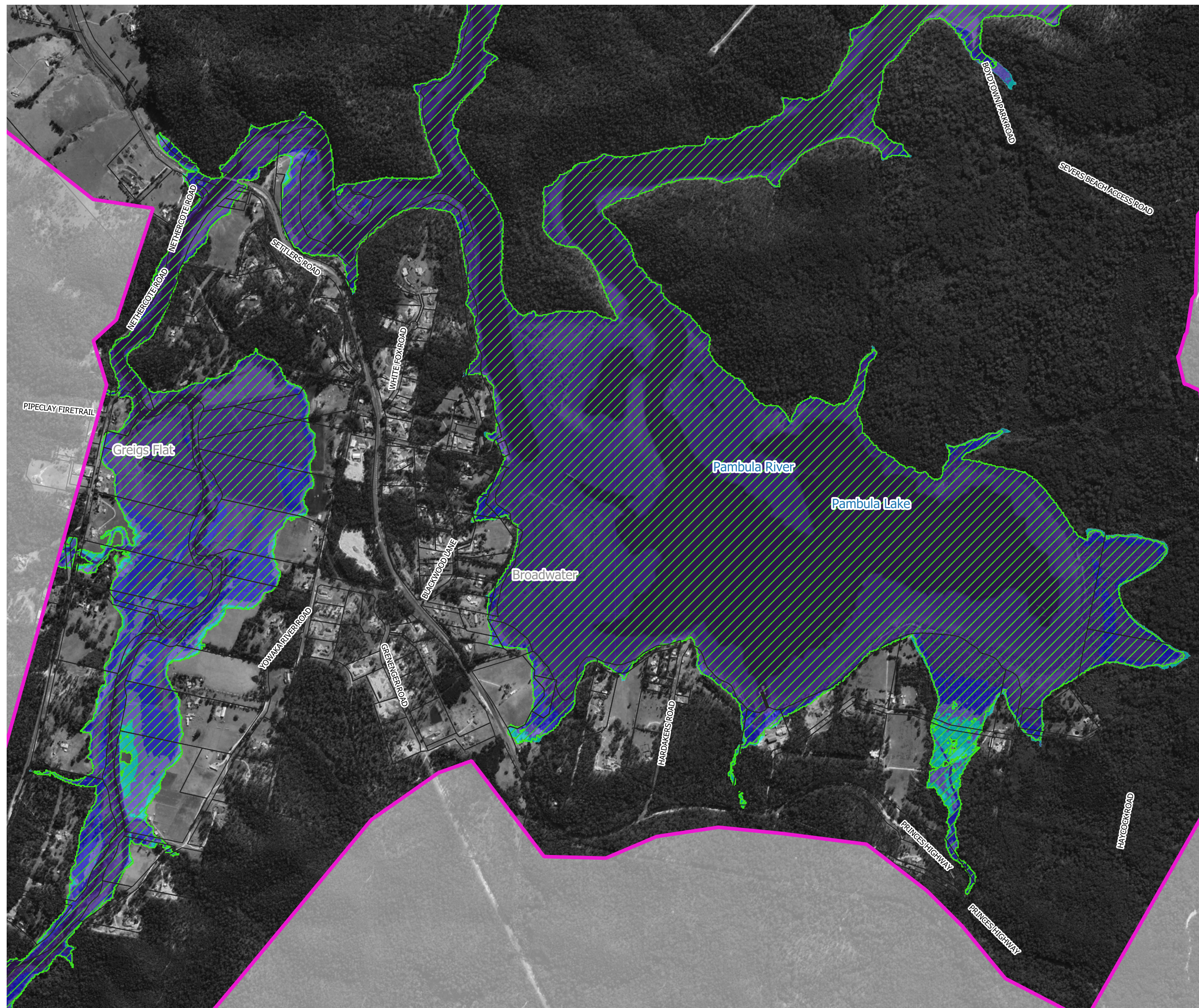


**Figure 52.2**  
**Peak 1% AEP Water Depths**  
**with 0.9m Sea Level Rise**

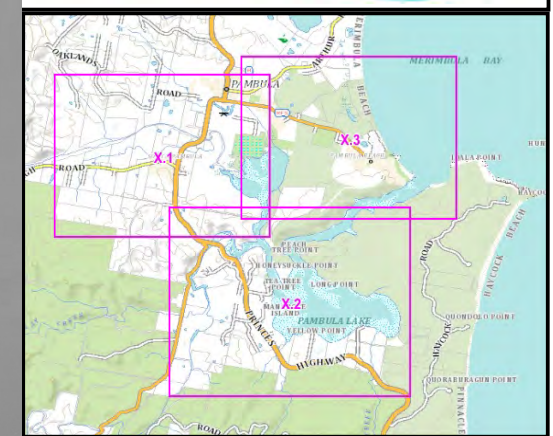
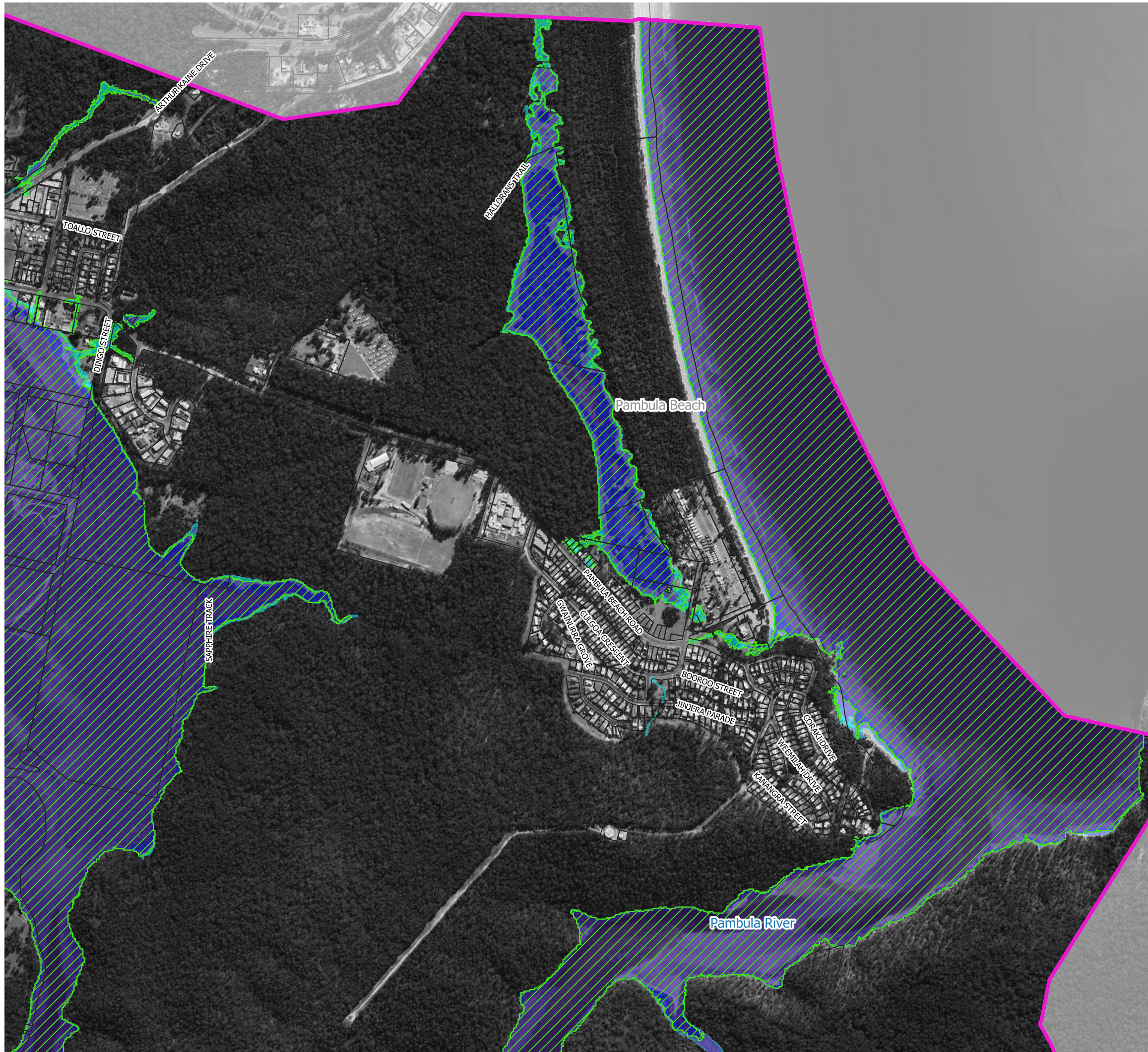
Prepared By:

 **Catchment Simulation Solutions**  
Suite 10.01, 70 Phillip St  
Sydney, NSW 2000

File Name: Figure 52 Peak 1% AEP Water Depths with 0.9m Sea Level Rise



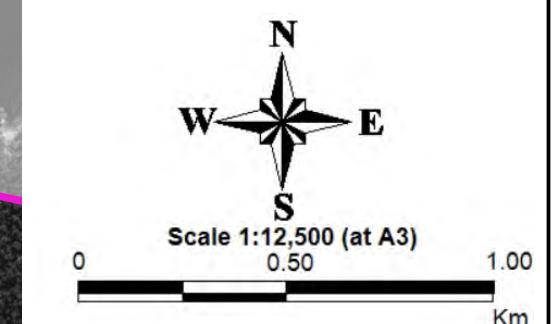




### LEGEND

- 1% AEP Inundation Extent for Existing Conditions
- Depths (m)
- 0.1 to 0.5
  - 0.5 to 1.0
  - 1.0 to 2.0
  - 2.0 to 5.0
  - > 5

Notes:  
Aerial photograph: Google Satellite 2019  
Only areas subject to inundation depths of more than 0.1 metres are displayed

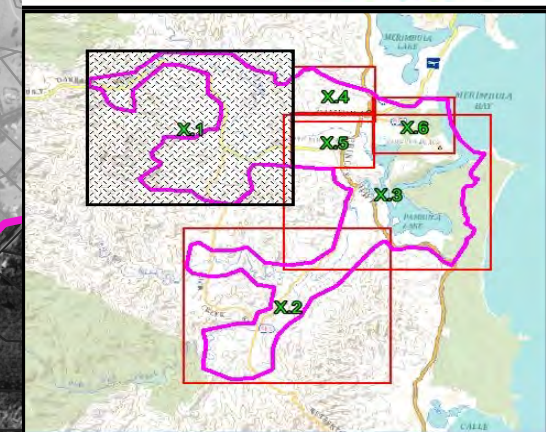
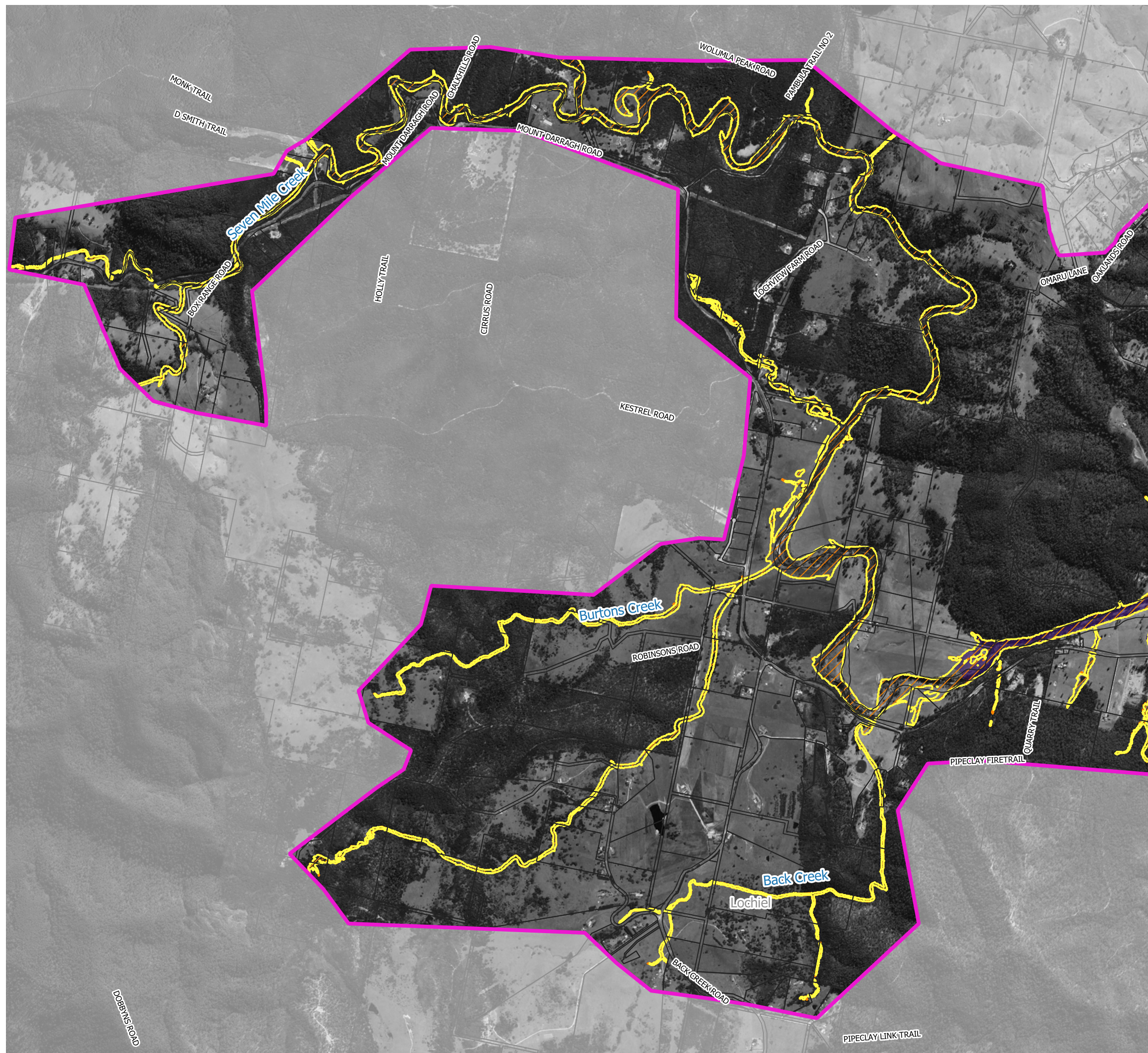


**Figure 52.3**  
**Peak 1% AEP Water Depths**  
**with 0.9m Sea Level Rise**

Prepared By:  
**Catchment Simulation Solutions**  
Suite 10.01, 70 Phillip St  
Sydney, NSW 2000

File Name: Figure 52 Peak 1% AEP Water Depths with 0.9m Sea Level Rise

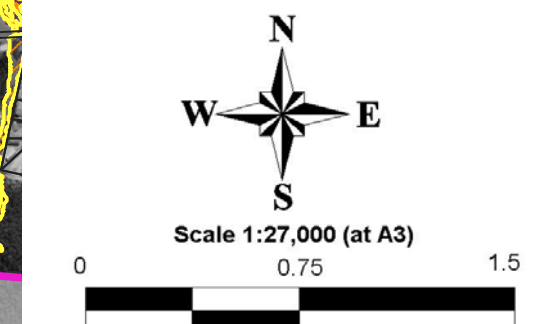




#### LEGEND

- 1% AEP Inundation Extent for Existing Conditions
  - 1% AEP Inundation Extent with 0.9m Sea Level Rise
- Depths (m)
- 0.1 to 0.5
  - 0.5 to 1.0
  - 1.0 to 2.0
  - 2.0 to 5.0
  - > 5

Notes:  
Aerial photograph: Google Satellite 2019  
Only areas subject to inundation depths of more than 0.1 metres are displayed

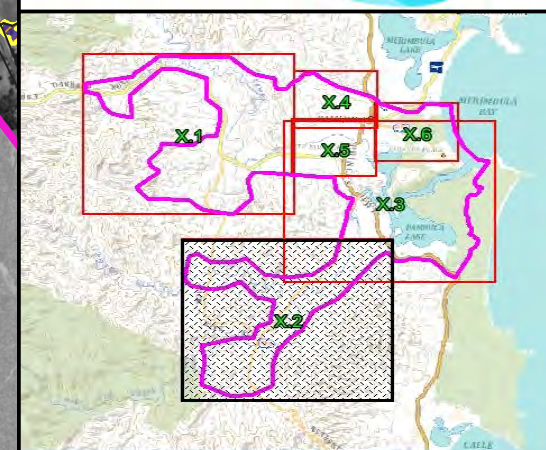
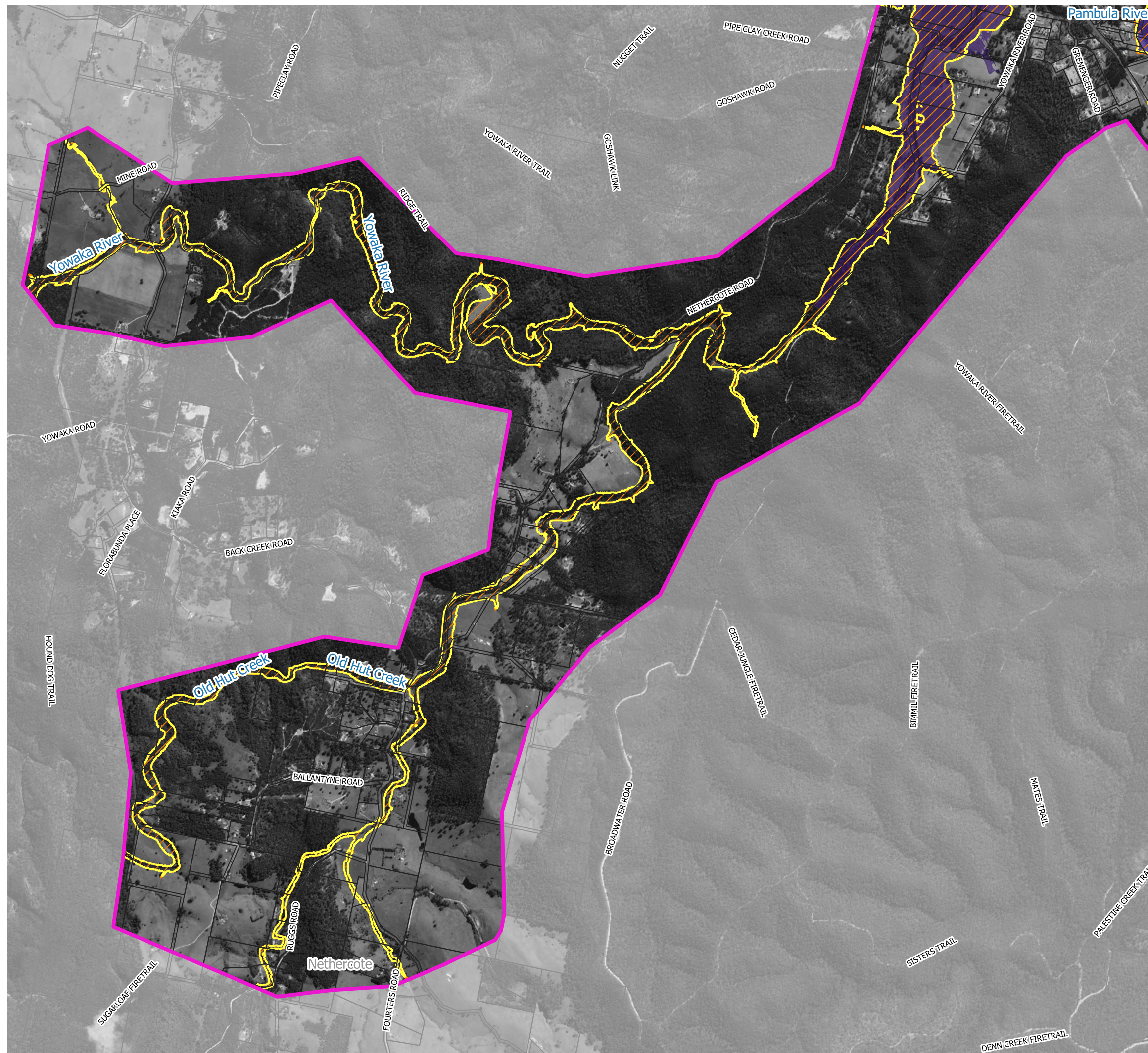


**Figure 53.1**  
**Peak 1% AEP Water Depths**  
**with 0.9m Sea Level Rise and**  
**0.9m Increase in River**  
**Entrance Elevation**

Prepared By:  
**Catchment Simulation Solutions**  
Suite 10.01, 70 Phillip St  
Sydney, NSW 2000

File Name: Figure 53 Peak 1% AEP Water Depths with 0.9m Sea Level Rise and 0.9m Increase in River Entrance Elevation





**LEGEND**

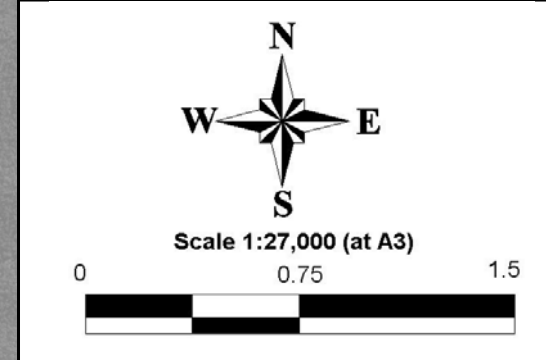
1% AEP Inundation Extent for Existing Conditions

1% AEP Inundation Extent with 0.9m Sea Level Rise

Depths (m)

- 0.1 to 0.5
- 0.5 to 1.0
- 1.0 to 2.0
- 2.0 to 5.0
- > 5

Notes:  
Aerial photograph: Google Satellite 2019  
Only areas subject to inundation depths of more than 0.1 metres are displayed



**Figure 53.2**  
**Peak 1% AEP Water Depths**  
**with 0.9m Sea Level Rise and**  
**0.9m Increase in River**  
**Entrance Elevation**