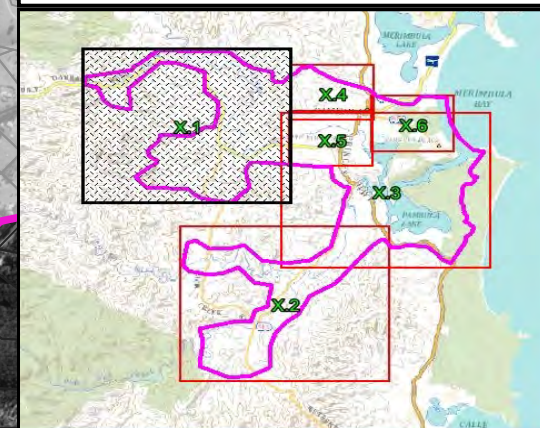


---

# FLOOD PLANNING MAPS

---





**LEGEND**

- Peak Flood Planning Level Contour (5m interval) (mAHD)
- Peak Flood Planning Level Contour (0.5m interval)
- Flood Planning Level Point (mAHD)
- Flood Planning Area

Notes:  
**Flood Planning Area is based on the 1% AEP flood with 0.9 metre increase in ocean level plus 0.5 metre freeboard.**  
 Aerial photograph: Google Satellite 2019.  
 Only areas subject to inundation depths of more than 0.1 metres are displayed.

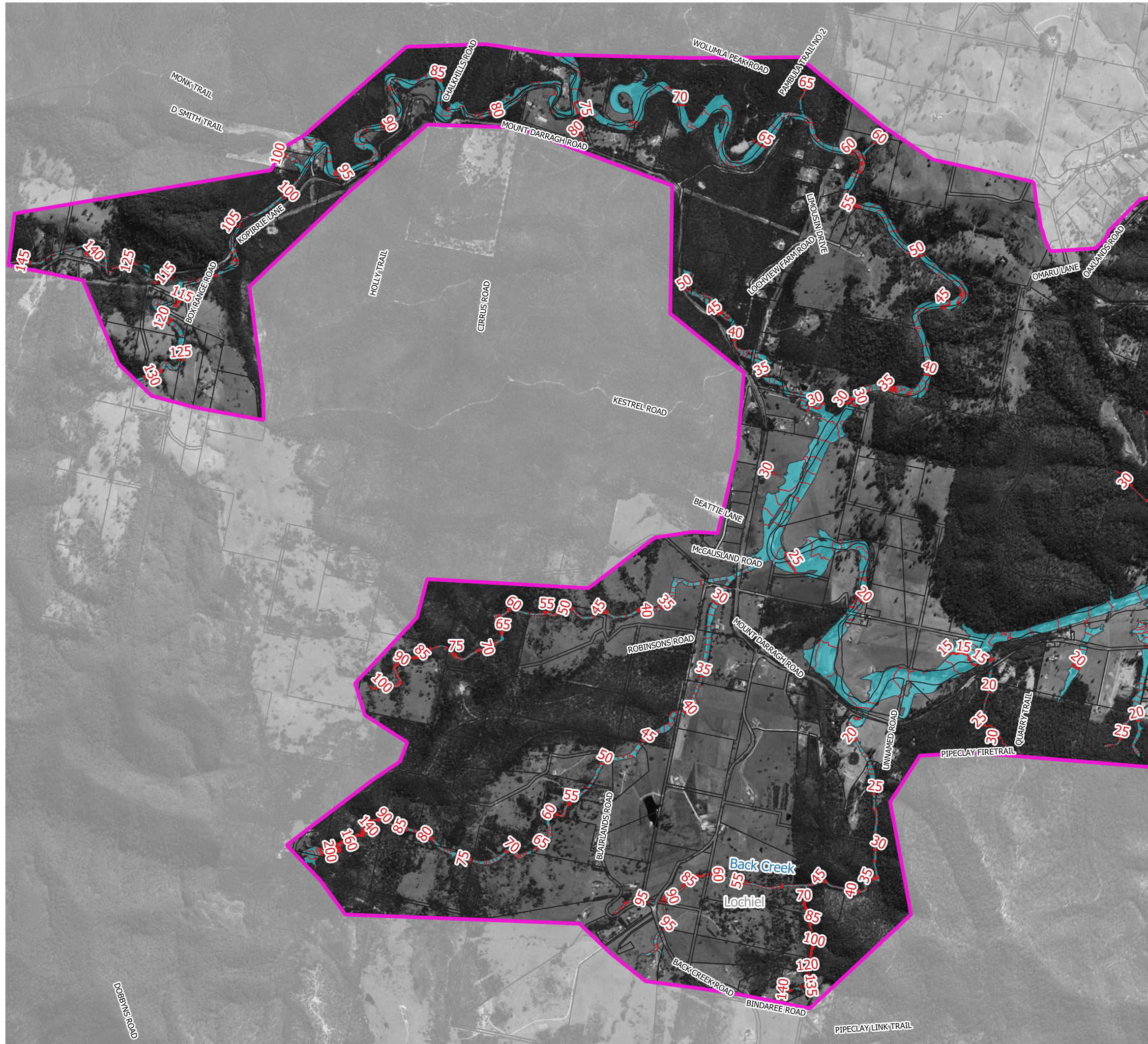


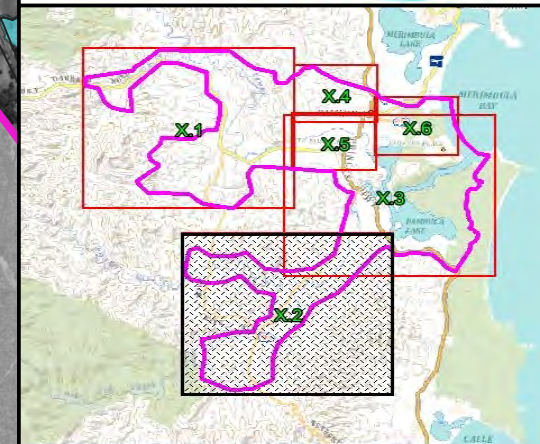
Scale 1:27,000 (at A3)

**Figure 60.1  
 Flood Planning Area**



Prepared By:  
**Catchment Simulation Solutions**  
 Suite 10.01, 70 Phillip St  
 Sydney, NSW 2000

File Name: Figure 60 Flood Planning Area

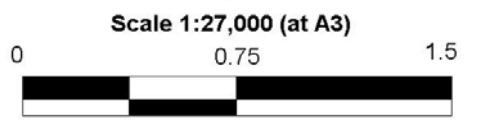




**LEGEND**

-  Peak Flood Planning Level Contour (5m interval) (mAHD)
-  Peak Flood Planning Level Contour (0.5m interval)
-  Flood Planning Level Point (mAHD)
-  Flood Planning Area

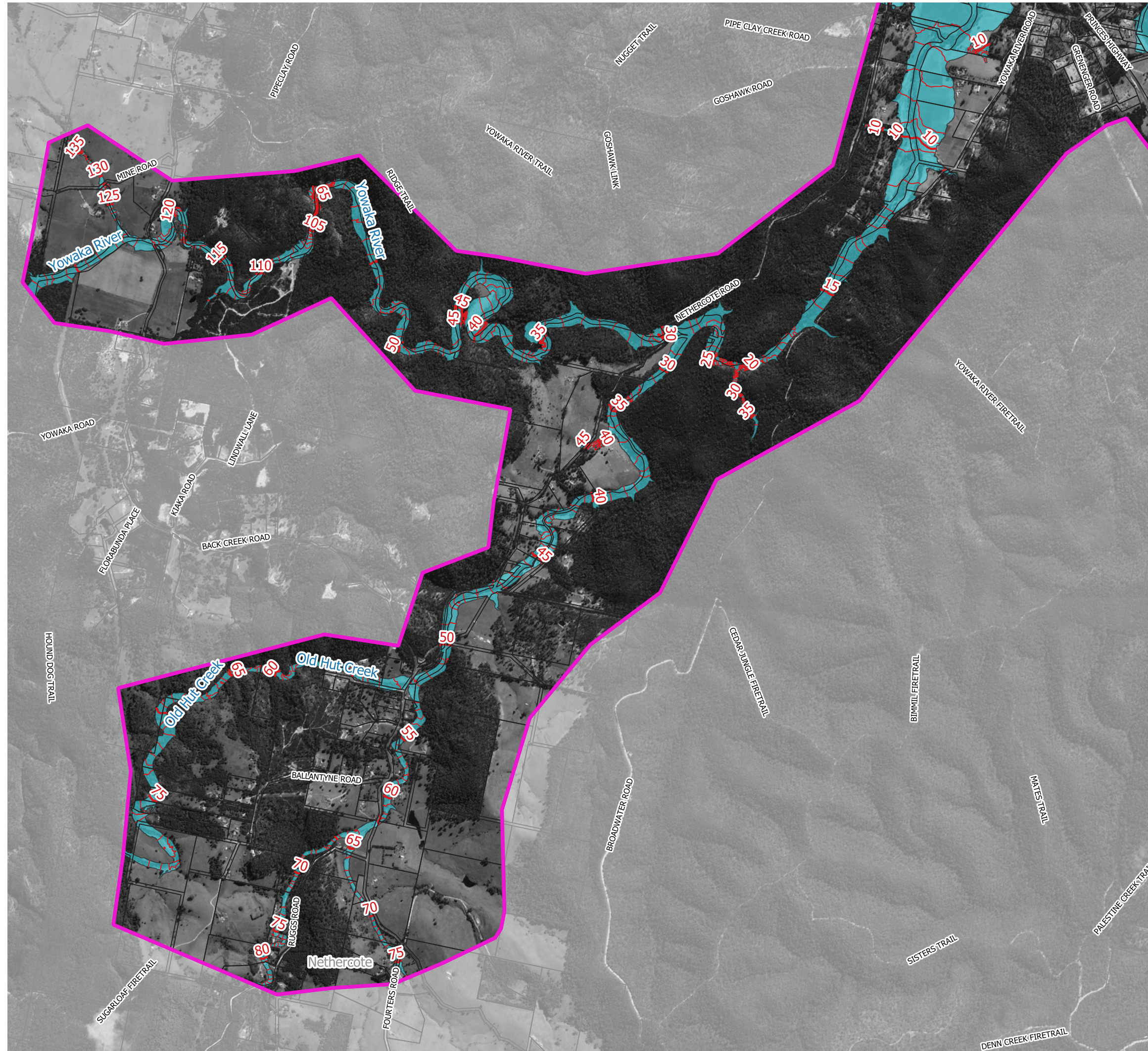
Notes:  
**Flood Planning Area is based on the 1% AEP flood with 0.9 metre increase in ocean level plus 0.5 metre freeboard.**  
 Aerial photograph: Google Satellite 2019.  
 Only areas subject to inundation depths of more than 0.1 metres are displayed.

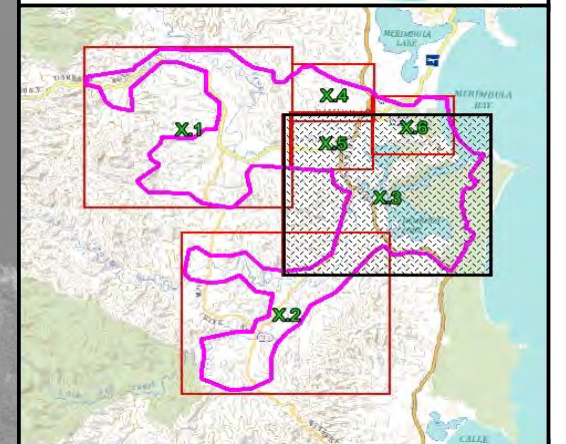


**Figure 60.2  
Flood Planning Area**





Prepared By:  
 **Catchment Simulation Solutions**  
 Suite 10.01, 70 Phillip St  
 Sydney, NSW 2000

File Name: Figure 60 Flood Planning Area

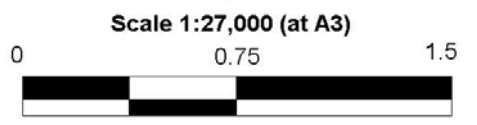




**LEGEND**

-  Peak Flood Planning Level Contour (5m interval) (mAHD)
-  Peak Flood Planning Level Contour (0.5m interval)
-  Flood Planning Level Point (mAHD)
-  Flood Planning Area

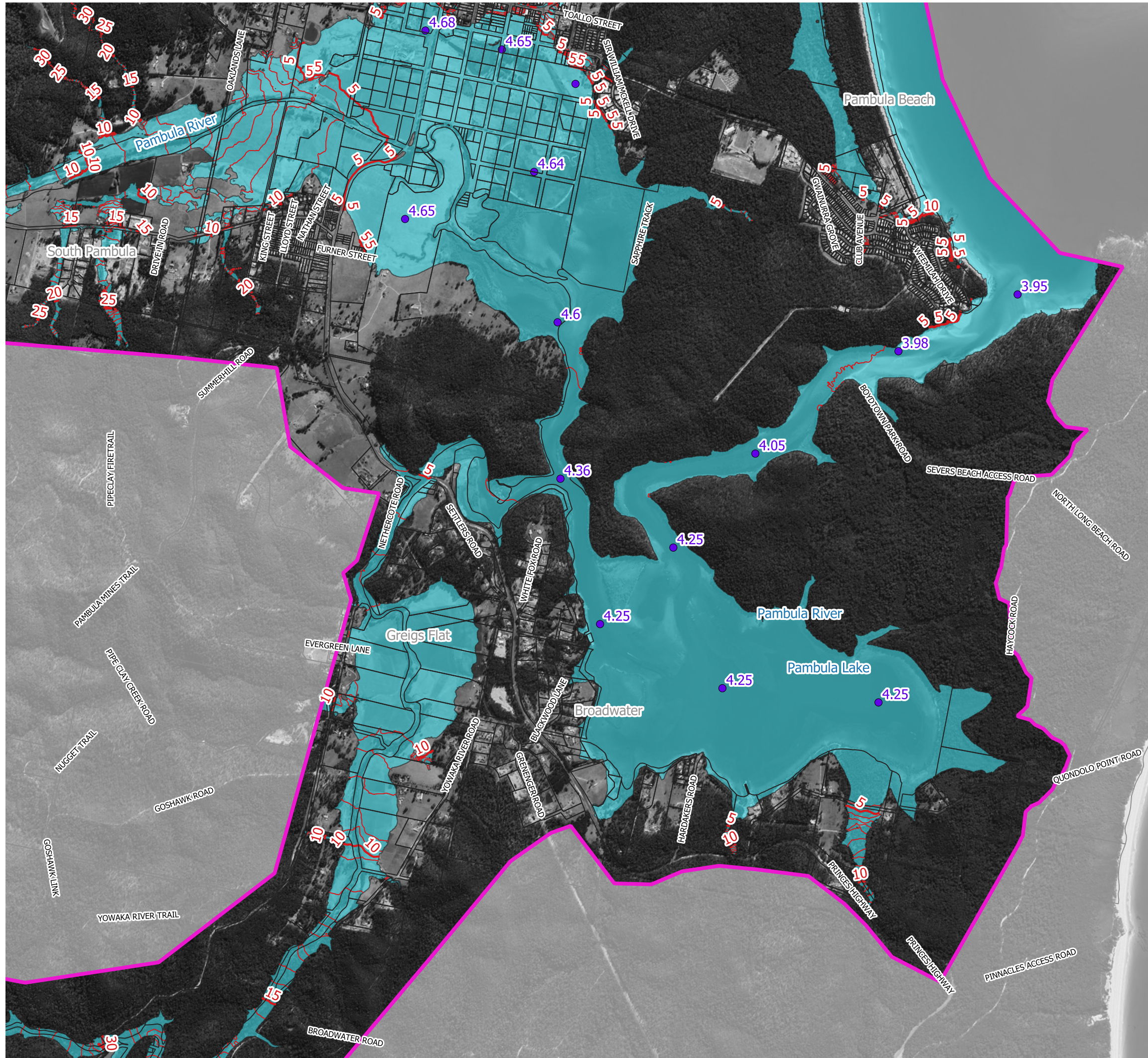
Notes:  
**Flood Planning Area is based on the 1% AEP flood with 0.9 metre increase in ocean level plus 0.5 metre freeboard.**  
 Aerial photograph: Google Satellite 2019.  
 Only areas subject to inundation depths of more than 0.1 metres are displayed.

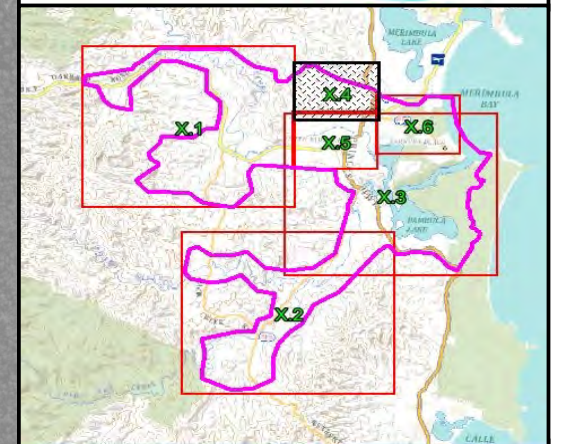


**Figure 60.3  
Flood Planning Area**




Prepared By:  
 **Catchment Simulation Solutions**  
 Suite 10.01, 70 Phillip St  
 Sydney, NSW 2000

File Name: Figure 60 Flood Planning Area

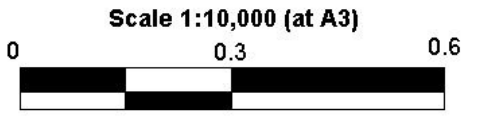





**LEGEND**

-  Peak Flood Planning Level Contour (5m interval) (mAHD)
-  Peak Flood Planning Level Contour (0.5m interval)
-  Flood Planning Level Point (mAHD)
-  Flood Planning Area

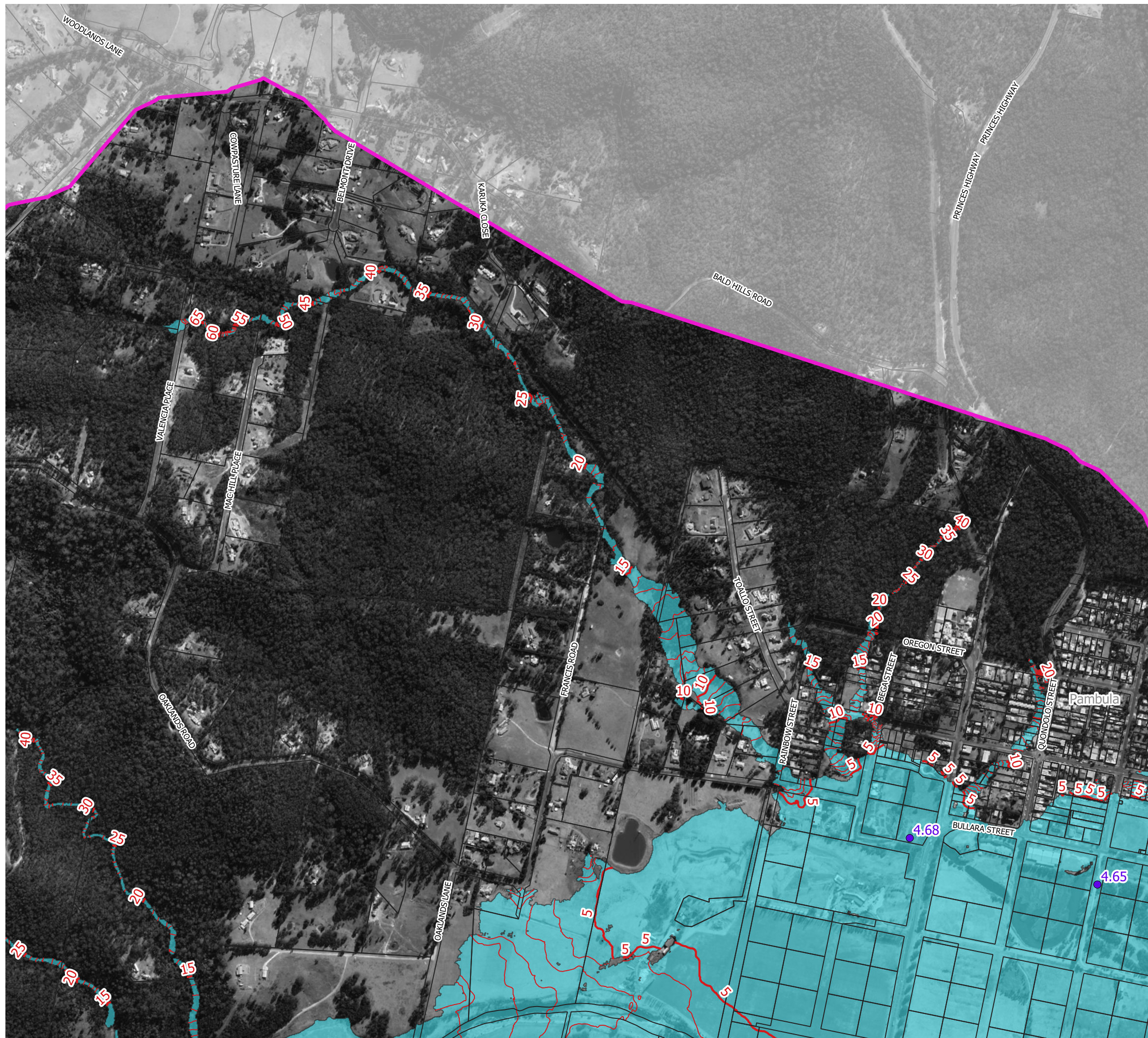
Notes:  
**Flood Planning Area is based on the 1% AEP flood with 0.9 metre increase in ocean level plus 0.5 metre freeboard.**  
 Aerial photograph: Google Satellite 2019.  
 Only areas subject to inundation depths of more than 0.1 metres are displayed.

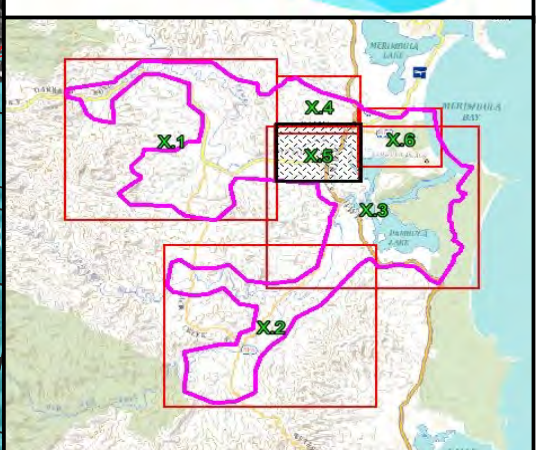
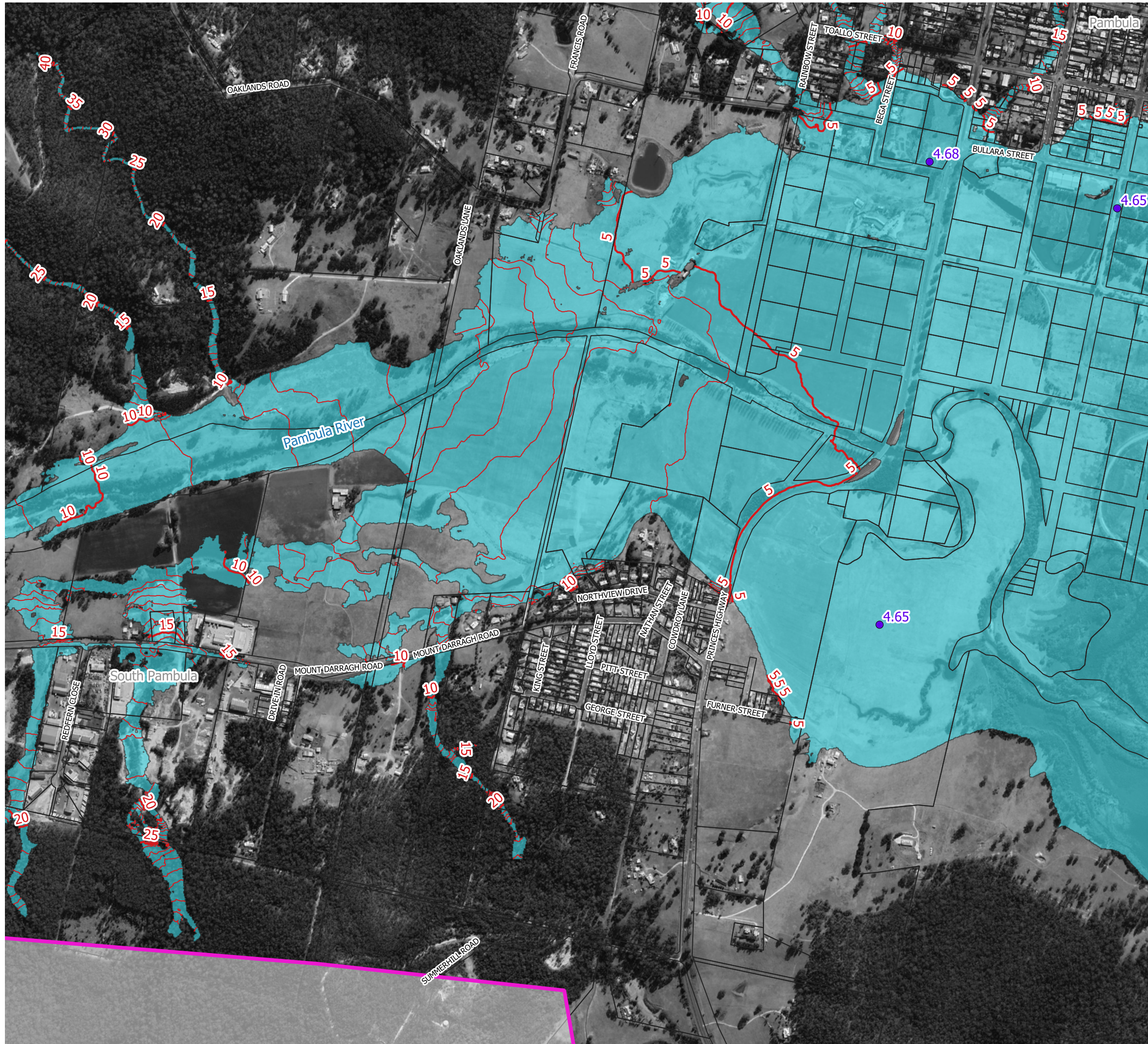


**Figure 60.4  
Flood Planning Area**

Prepared By:  
 **Catchment Simulation Solutions**  
 Suite 10.01, 70 Phillip St  
 Sydney, NSW 2000

File Name: Figure 60 Flood Planning Area

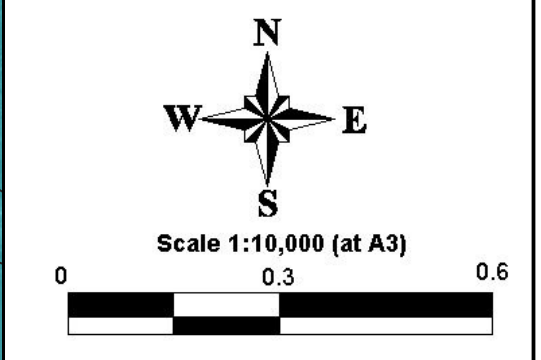




**LEGEND**

- Peak Flood Planning Level Contour (5m interval) (mAHD)
- Peak Flood Planning Level Contour (0.5m interval)
- Flood Planning Level Point (mAHD)
- Flood Planning Area

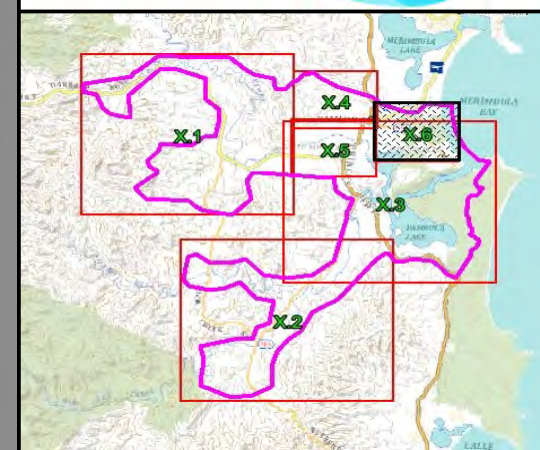
Notes:  
 Flood Planning Area is based on the 1% AEP flood with 0.9 metre increase in ocean level plus 0.5 metre freeboard.  
 Aerial photograph: Google Satellite 2019.  
 Only areas subject to inundation depths of more than 0.1 metres are displayed.







**Figure 60.5  
 Flood Planning Area**

Prepared By:  
 Catchment Simulation Solutions  
 Suite 10.01, 70 Phillip St  
 Sydney, NSW 2000

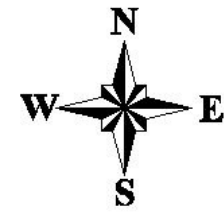
File Name: Figure 60 Flood Planning Area



**LEGEND**

-  Peak Flood Planning Level Contour (5m interval) (mAHD)
-  Peak Flood Planning Level Contour (0.5m interval)
-  Flood Planning Level Point (mAHD)
-  Flood Planning Area

Notes:  
**Flood Planning Area is based on the 1% AEP flood with 0.9 metre increase in ocean level plus 0.5 metre freeboard.**  
 Aerial photograph: Google Satellite 2019.  
 Only areas subject to inundation depths of more than 0.1 metres are displayed.



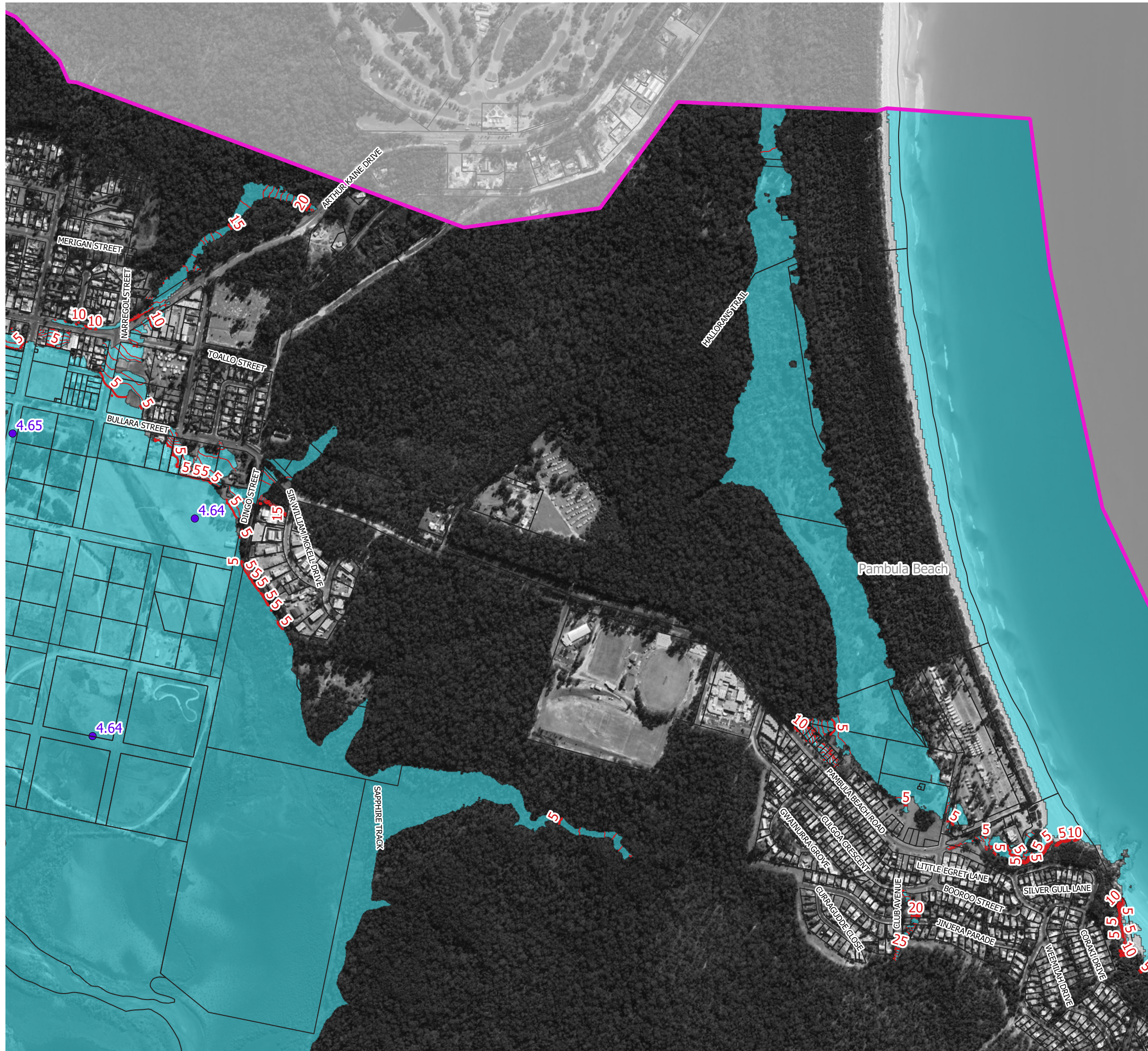
Scale 1:10,000 (at A3)

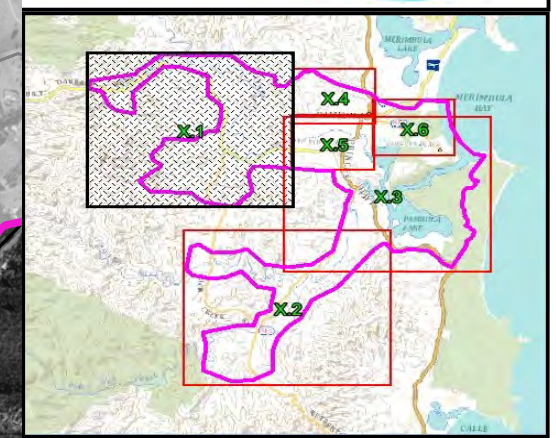
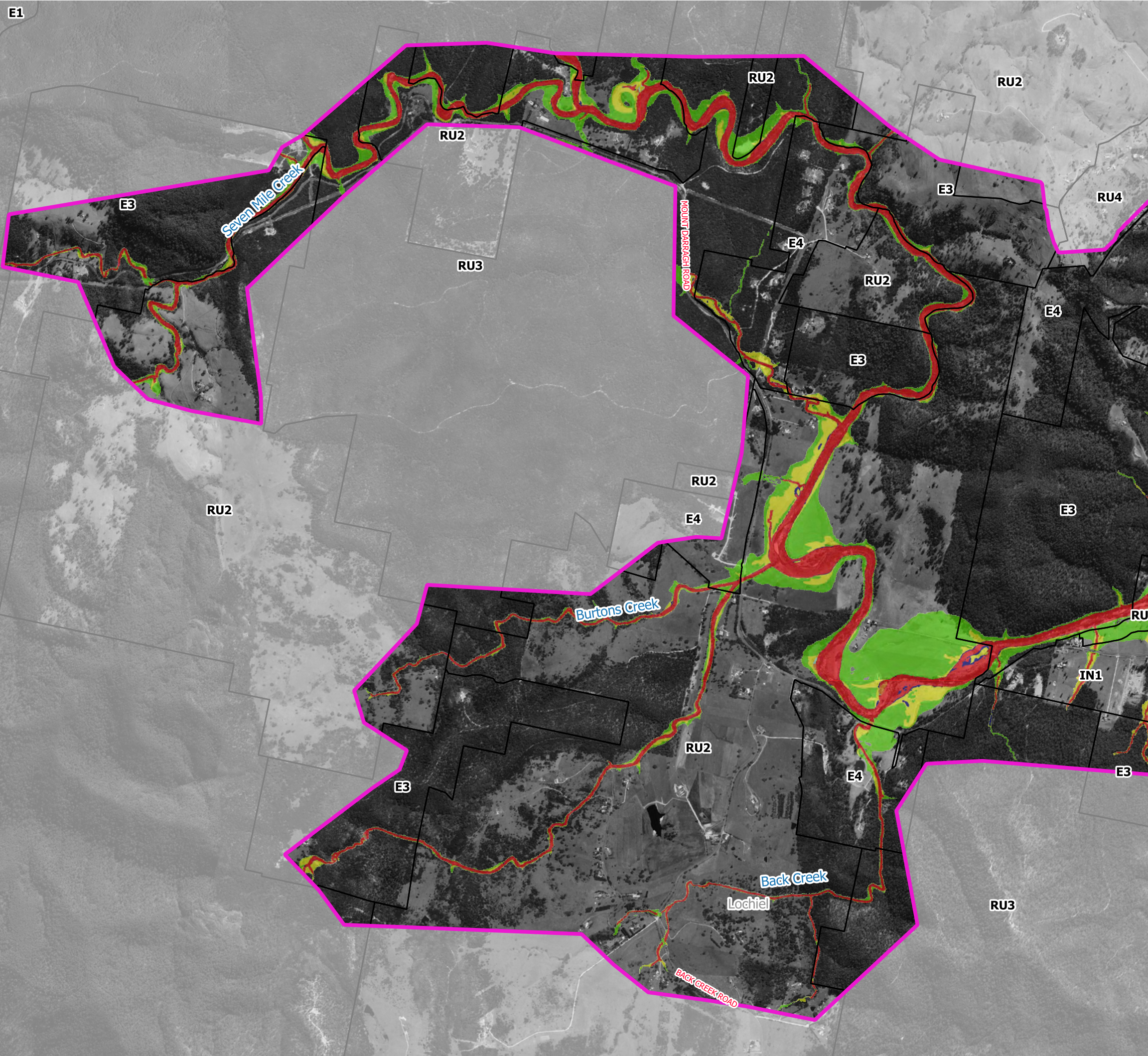


**Figure 60.6  
Flood Planning Area**

Prepared By:  
 **Catchment Simulation Solutions**  
 Suite 10.01, 70 Phillip St  
 Sydney, NSW 2000

File Name: Figure 60 Flood Planning Area

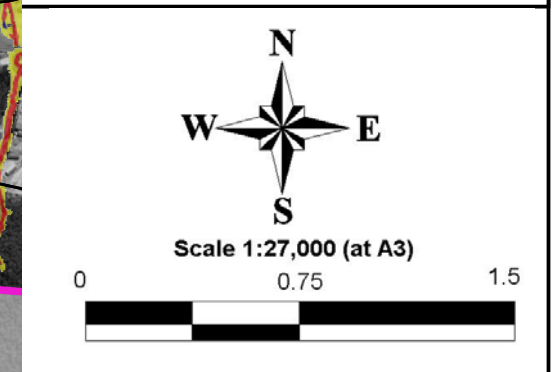




**LEGEND**

- LEP Zones
- FPCC Category 1:**
  - 1A: Flow conveyance and storage areas in the 1% AEP Flood
  - 1B: H6 Hazard in the 1% AEP Flood
- FPCC Category 2:**
  - 2A: Flow conveyance in the 0.5% AEP Flood
  - 2B: Flood hazard H5 in the 1% AEP Flood
  - 2C: Emergency response-isolated and submerged areas
  - 2D: Emergency response-isolated but elevated areas
  - 2E: Flood hazard H6 in the 0.5% AEP Flood
- FPCC Category 3:** Outside FPCC2-generally below the 1% AEP Flood and the freeboard
- FPCC Category 4:** Outside FPCC3, but within the PMF

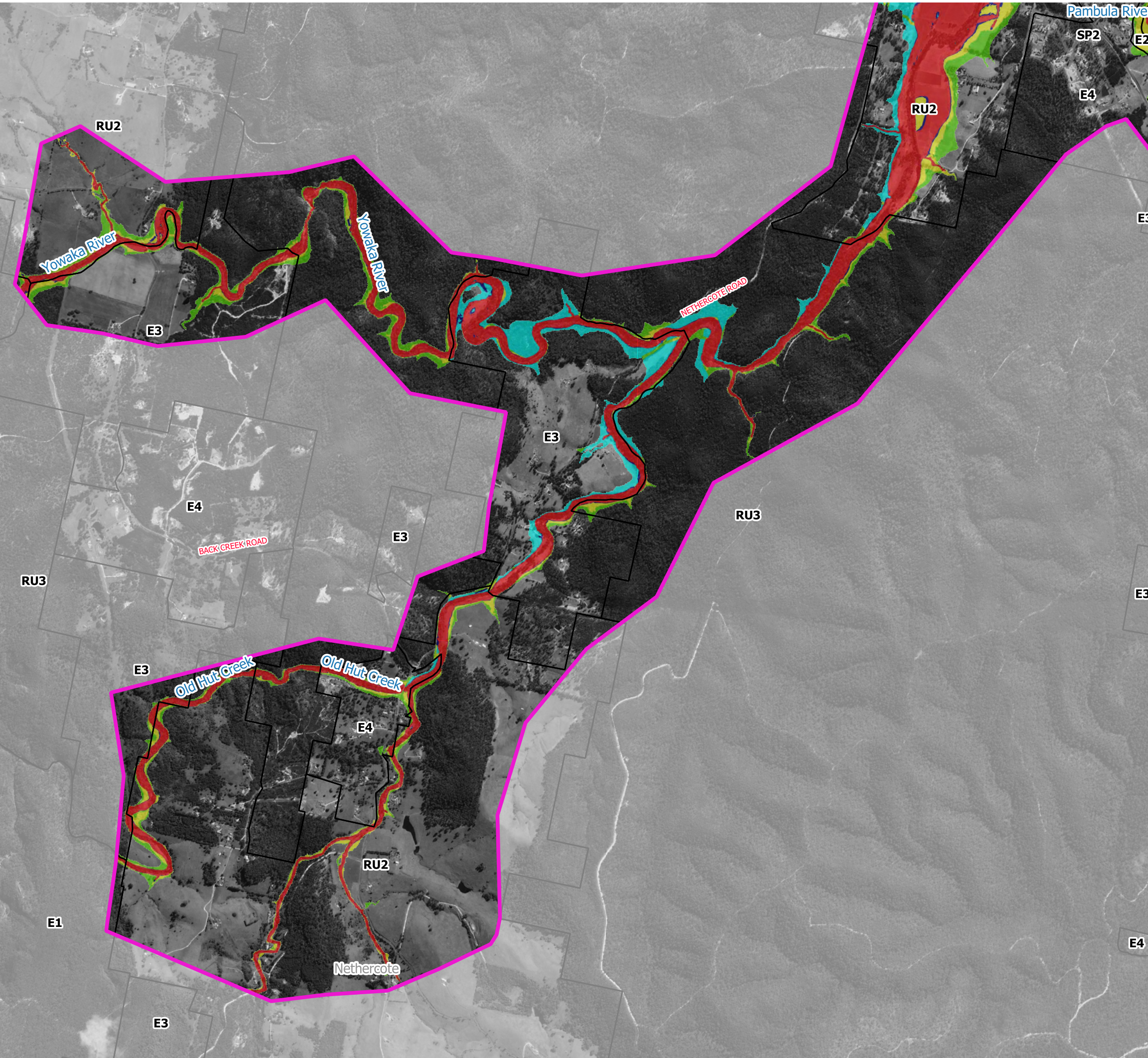
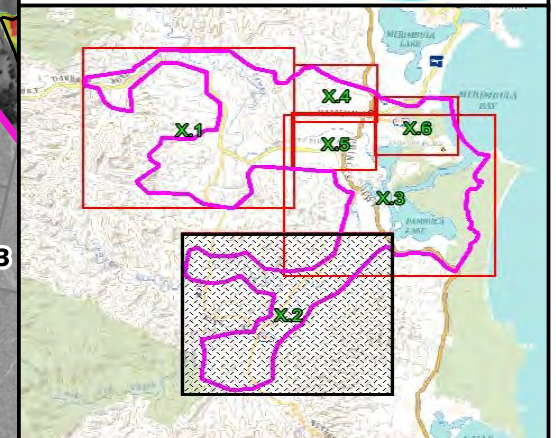
Notes:  
 Aerial photograph: Google Satellite 2019  
 Only areas subject to inundation depths of more than 0.1 metres are displayed



**Figure 61.1  
 Flood Planning  
 Constraints Mapping**

Prepared By:  
**Catchment Simulation Solutions**  
 Suite 10.01, 70 Phillip St  
 Sydney, NSW 2000

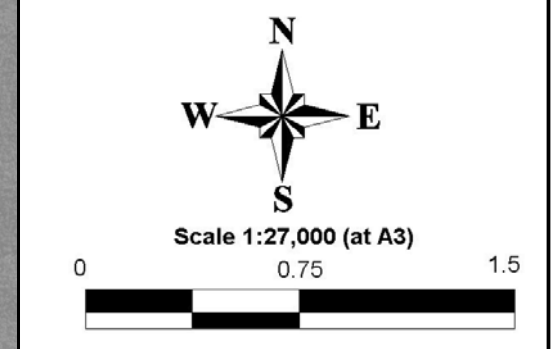




**LEGEND**

- LEP Zones
- FPCC Category 1:**
  - 1A: Flow conveyance and storage areas in the 1% AEP Flood
  - 1B: H6 Hazard in the 1% AEP Flood
- FPCC Category 2:**
  - 2A: Flow conveyance in the 0.5% AEP Flood
  - 2B: Flood hazard H5 in the 1% AEP Flood
  - 2C: Emergency response-isolated and submerged areas
  - 2D: Emergency response-isolated but elevated areas
  - 2E: Flood hazard H6 in the 0.5% AEP Flood
- FPCC Category 3:** Outside FPCC2-generally below the 1% AEP Flood and the freeboard
- FPCC Category 4:** Outside FPCC3, but within the PMF

Notes:  
Aerial photograph: Google Satellite 2019  
Only areas subject to inundation depths of more than 0.1 metres are displayed



N  
W E  
S

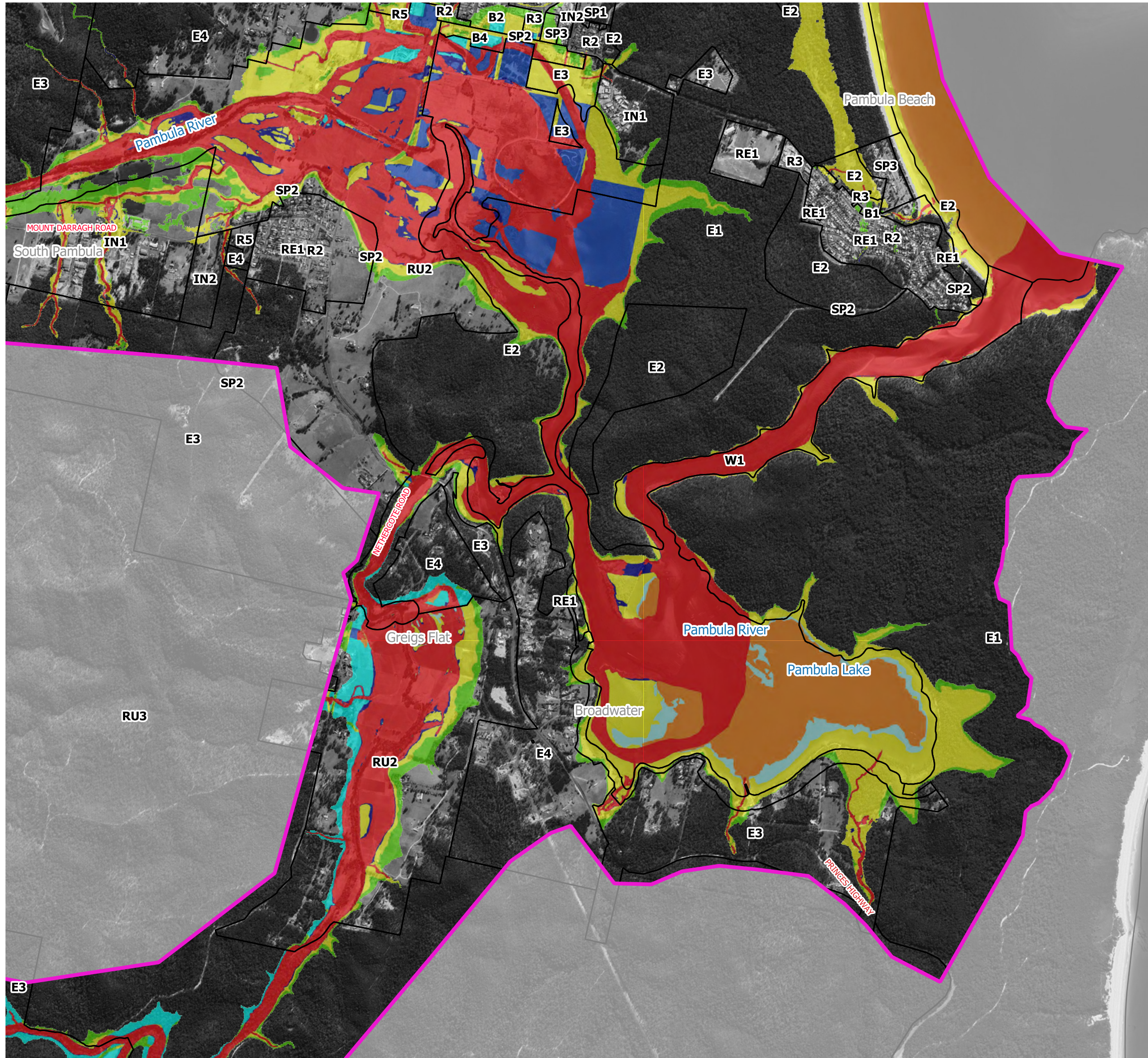
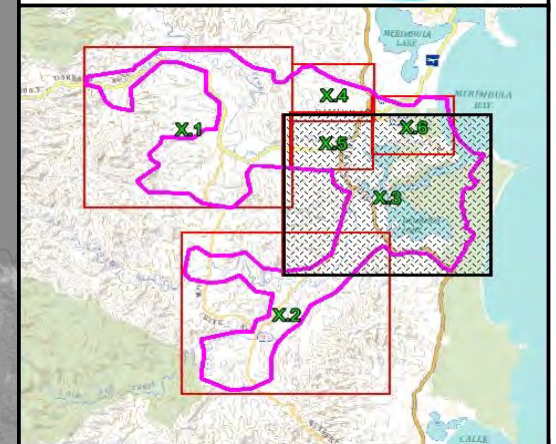
Scale 1:27,000 (at A3)

0 0.75 1.5

**Figure 61.2  
Flood Planning  
Constraints Mapping**

Prepared By:  
 **Catchment Simulation Solutions**  
Suite 10.01, 70 Phillip St  
Sydney, NSW 2000

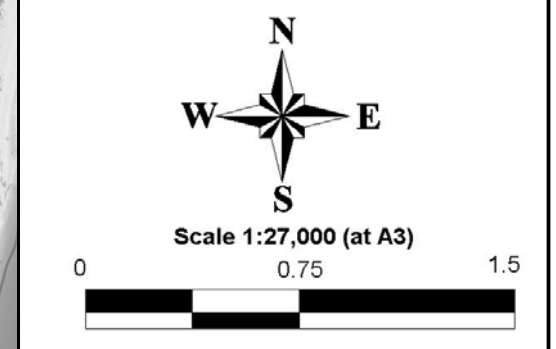
File Name: Figure 61 Flood Planning Constraints Mapping



**LEGEND**

- LEP Zones
- FPCC Category 1:**
  - 1A: Flow conveyance and storage areas in the 1% AEP Flood
  - 1B: H6 Hazard in the 1% AEP Flood
- FPCC Category 2:**
  - 2A: Flow conveyance in the 0.5% AEP Flood
  - 2B: Flood hazard H5 in the 1% AEP Flood
  - 2C: Emergency response-isolated and submerged areas
  - 2D: Emergency response-isolated but elevated areas
  - 2E: Flood hazard H6 in the 0.5% AEP Flood
- FPCC Category 3:** Outside FPCC2-generally below the 1% AEP Flood and the freeboard
- FPCC Category 4:** Outside FPCC3, but within the PMF

Notes:  
Aerial photograph: Google Satellite 2019  
Only areas subject to inundation depths of more than 0.1 metres are displayed



N  
W E  
S

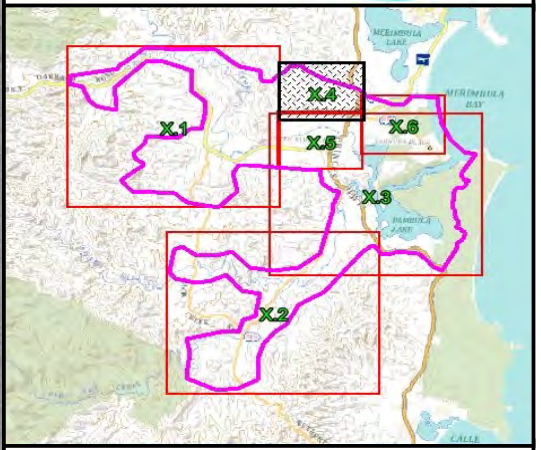
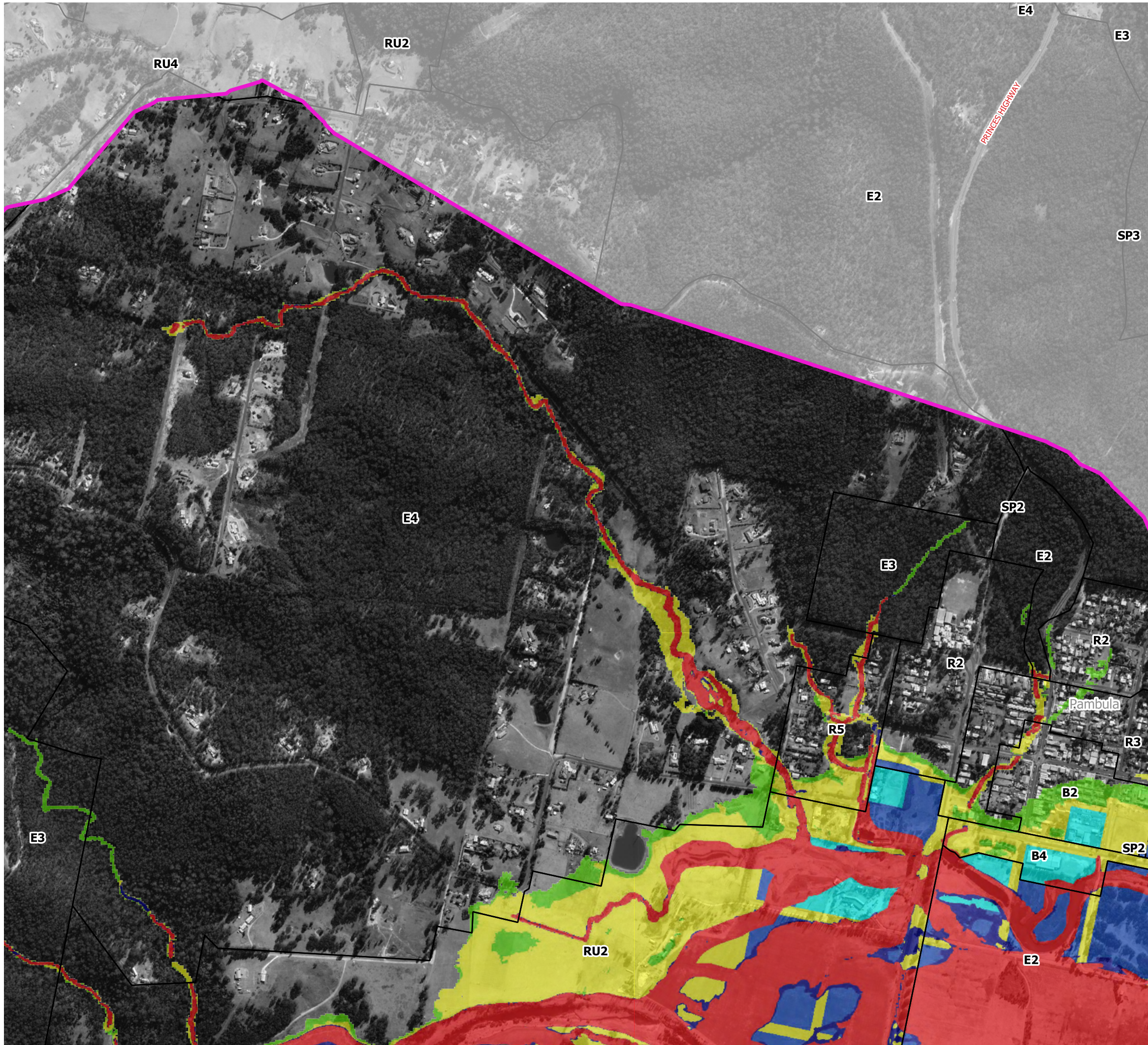
Scale 1:27,000 (at A3)

0 0.75 1.5

**Figure 61.3  
Flood Planning  
Constraints Mapping**

Prepared By:  
 **Catchment Simulation Solutions**  
Suite 10.01, 70 Phillip St  
Sydney, NSW 2000

File Name: Figure 61 Flood Planning Constraints Mapping



**LEGEND**

LEP Zones

**FPCC Category 1:**

- 1A: Flow conveyance and storage areas in the 1% AEP Flood
- 1B: H6 Hazard in the 1% AEP Flood

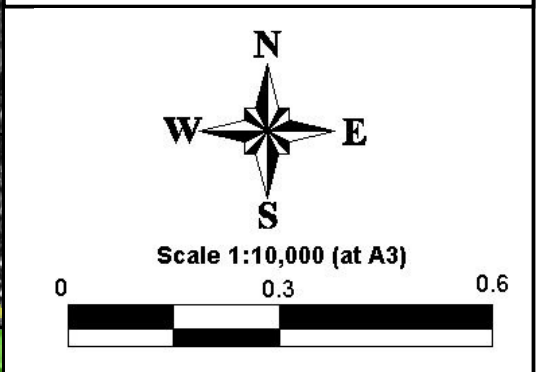
**FPCC Category 2:**

- 2A: Flow conveyance in the 0.5% AEP Flood
- 2B: Flood hazard H5 in the 1% AEP Flood
- 2C: Emergency response-isolated and submerged areas
- 2D: Emergency response-isolated but elevated areas
- 2E: Flood hazard H6 in the 0.5% AEP Flood

**FPCC Category 3:** Outside FPCC2-generally below the 1% AEP Flood and the freeboard

**FPCC Category 4:** Outside FPCC3, but within the PMF

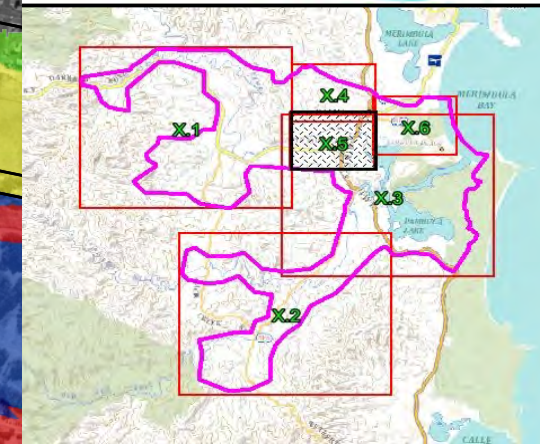
Notes:  
Aerial photograph: Google Satellite 2019  
Only areas subject to inundation depths of more than 0.1 metres are displayed



**Figure 61.4  
Flood Planning  
Constraints Mapping**

Prepared By:  
**Catchment Simulation Solutions**  
Suite 10.01, 70 Phillip St  
Sydney, NSW 2000

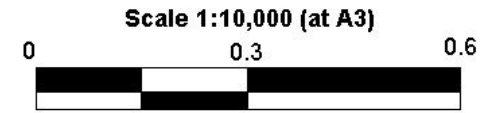
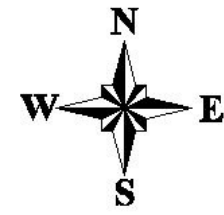
File Name: Figure 61 Flood Planning Constraints Mapping



**LEGEND**

- LEP Zones
- FPCC Category 1:**
  - 1A: Flow conveyance and storage areas in the 1% AEP Flood
  - 1B: H6 Hazard in the 1% AEP Flood
- FPCC Category 2:**
  - 2A: Flow conveyance in the 0.5% AEP Flood
  - 2B: Flood hazard H5 in the 1% AEP Flood
  - 2C: Emergency response-isolated and submerged areas
  - 2D: Emergency response-isolated but elevated areas
  - 2E: Flood hazard H6 in the 0.5% AEP Flood
- FPCC Category 3:** Outside FPCC2-generally below the 1% AEP Flood and the freeboard
- FPCC Category 4:** Outside FPCC3, but within the PMF

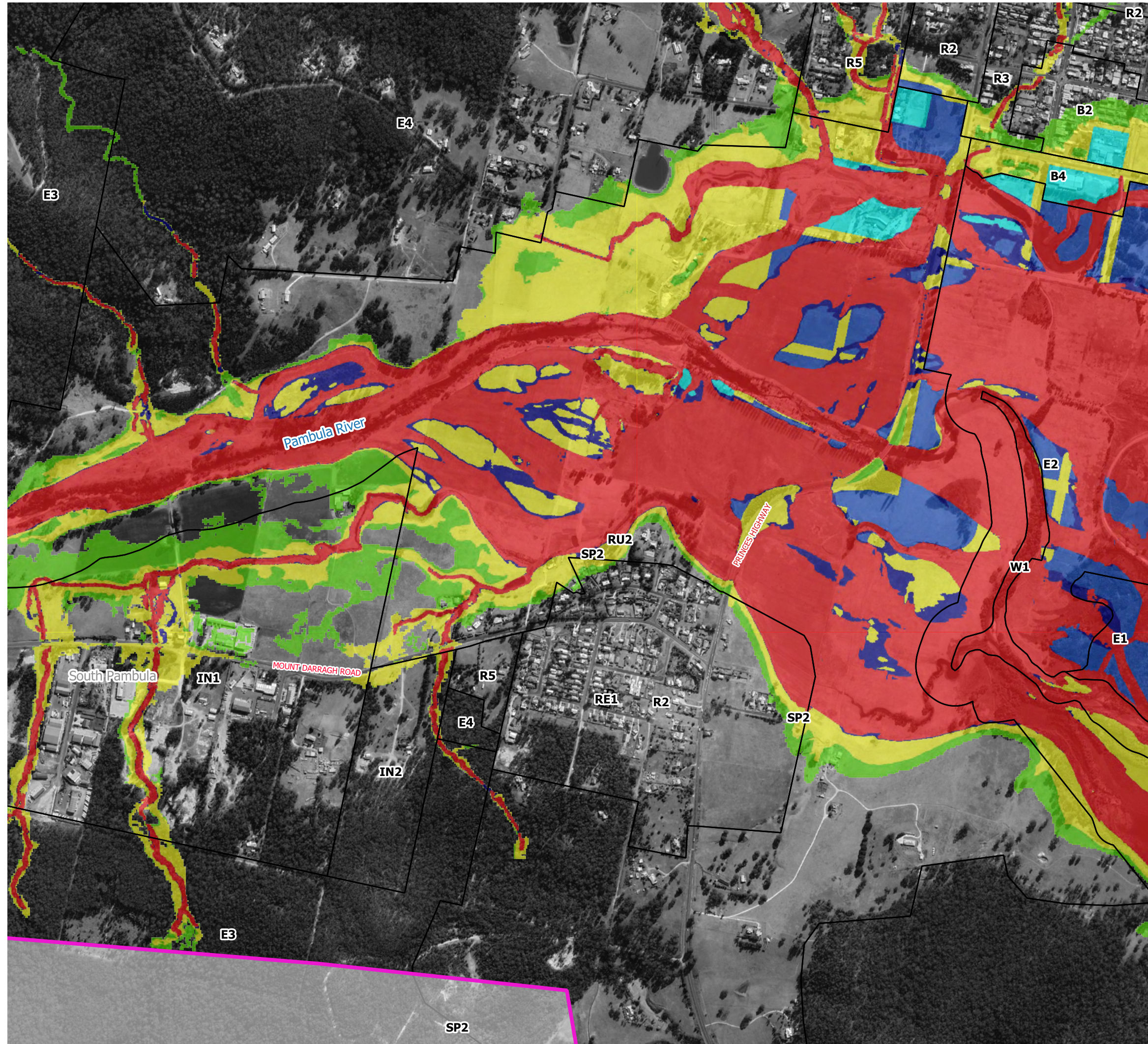
Notes:  
Aerial photograph: Google Satellite 2019  
Only areas subject to inundation depths of more than 0.1 metres are displayed

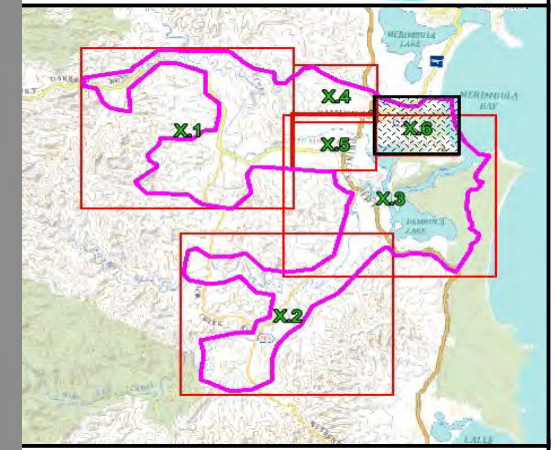
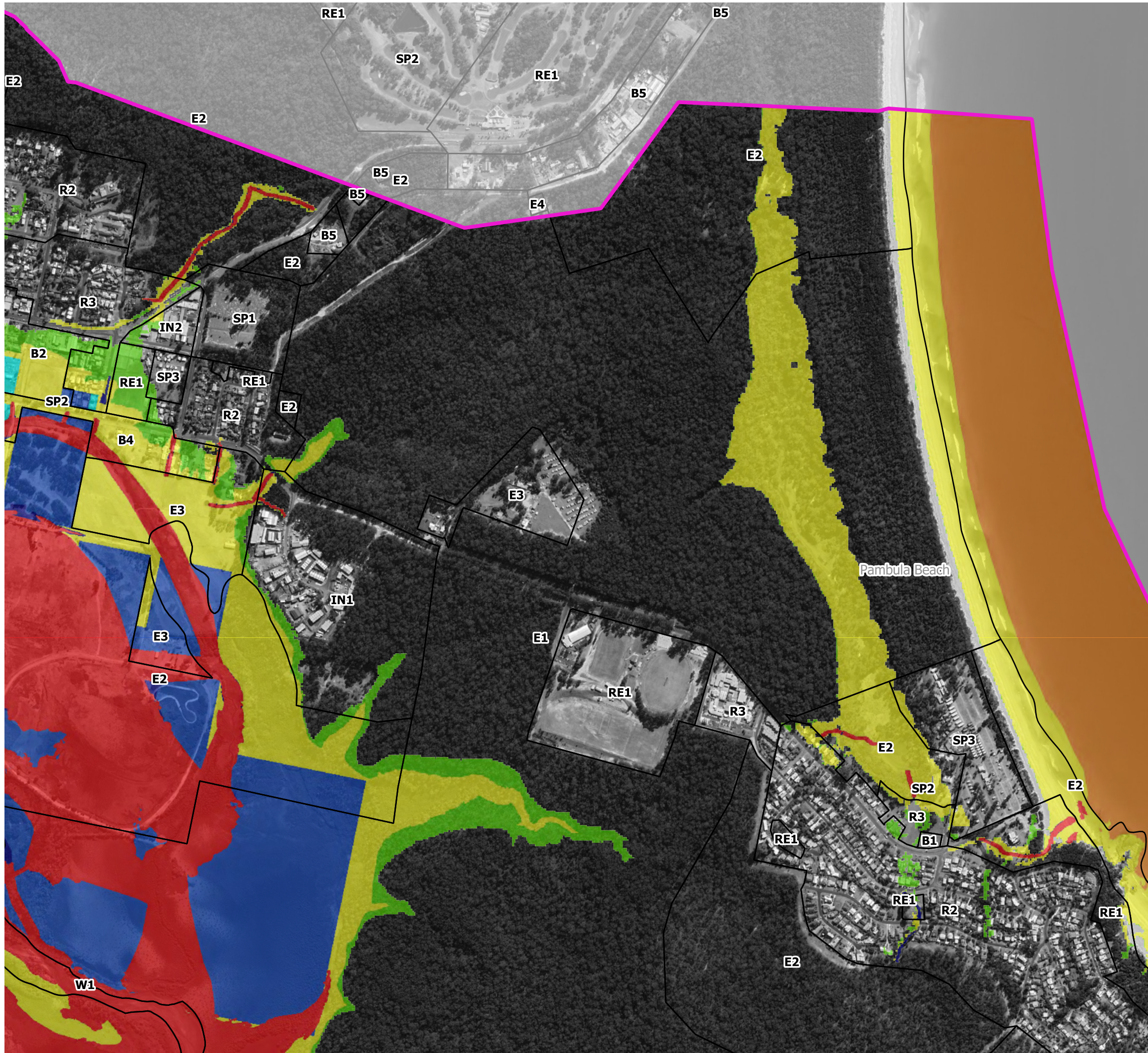


**Figure 61.5  
Flood Planning  
Constraints Mapping**

Prepared By:  
 **Catchment Simulation Solutions**  
Suite 10.01, 70 Phillip St  
Sydney, NSW 2000

File Name: Figure 61 Flood Planning Constraints Mapping





**LEGEND**

LEP Zones

FPCC Category 1:

- 1A: Flow conveyance and storage areas in the 1% AEP Flood
- 1B: H6 Hazard in the 1% AEP Flood

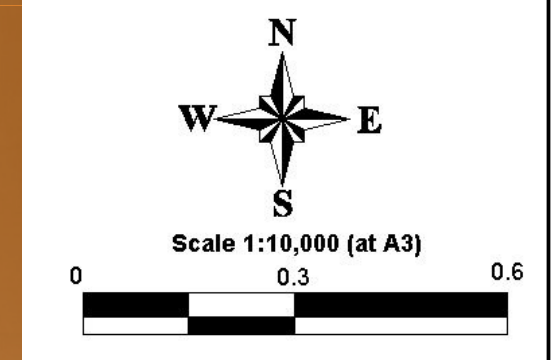
FPCC Category 2:

- 2A: Flow conveyance in the 0.5% AEP Flood
- 2B: Flood hazard H5 in the 1% AEP Flood
- 2C: Emergency response-isolated and submerged areas
- 2D: Emergency response-isolated but elevated areas
- 2E: Flood hazard H6 in the 0.5% AEP Flood

FPCC Category 3: Outside FPCC2-generally below the 1% AEP Flood and the freeboard

FPCC Category 4: Outside FPCC3, but within the PMF

Notes:  
 Aerial photograph: Google Satellite 2019  
 Only areas subject to inundation depths of more than 0.1 metres are displayed



**Figure 61.6  
 Flood Planning  
 Constraints Mapping**

Prepared By:  
**Catchment Simulation Solutions**  
 Suite 10.01, 70 Phillip St  
 Sydney, NSW 2000

File Name: Figure 61 Flood Planning Constraints Mapping