

SHOWERS



10 minute
showers can use up to
90 Litres
of water



Keep showers to
4 minutes
Use a shower timer



Advice

www.smartwatermark.org/NSW

TAPS

1 drip per second
wastes more than
12,000 litres per year

Fix dripping taps



SHOWERS

10 minute
showers can use up to
90 Litres
of water



Keep showers to
4 minutes
Use a shower timer



DISHWASHERS

A load of dishes
uses about
20 litres
of water, much less water
than hand washing

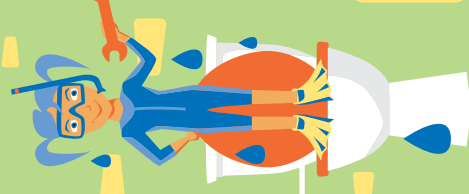
Run your dishwasher full



TOILETS

A constant leak
can waste more than
96,000 litres per year

Fix leaking toilets



WASHING MACHINES

A load of laundry
uses about
50-150 litres
of water, depending on the
age and make of machine

Run your washing machine full



For more tips visit

www.smartwatermark.org/NSW



Smart Approved WaterMark

Advice



Bega valley
Shire Council