

MULCH



**Mulch your
veggie
patch and
flowerbeds
to reduce
moisture
loss**

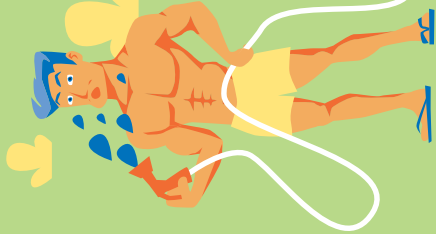


Advice

www.smartwatermark.org/NSW

HOSES

Use a trigger nozzle on your garden hose



RAINWATER TANKS

Install a rainwater tank and connect it to the laundry & toilets



PLANTS

Group plants with similar watering needs and water when needed



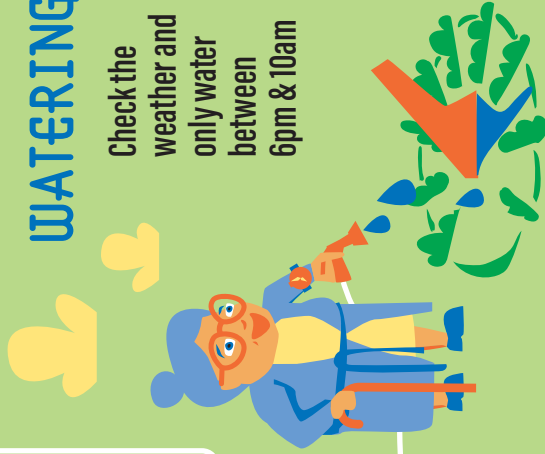
MULCH

Mulch your veggie patch and flowerbeds to reduce moisture loss



WATERING

Check the weather and only water between 6pm & 10am



For more tips visit
www.smartwatermark.org/NSW



Smart
Approved
WaterMark

Advice



beга valley
shire council